

Wisconsin Broadband Access- Serviceable Locations (BSL)

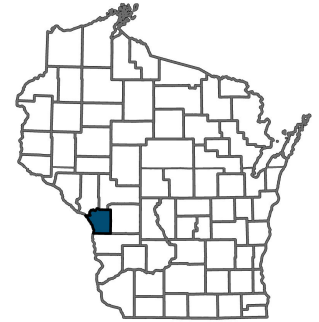
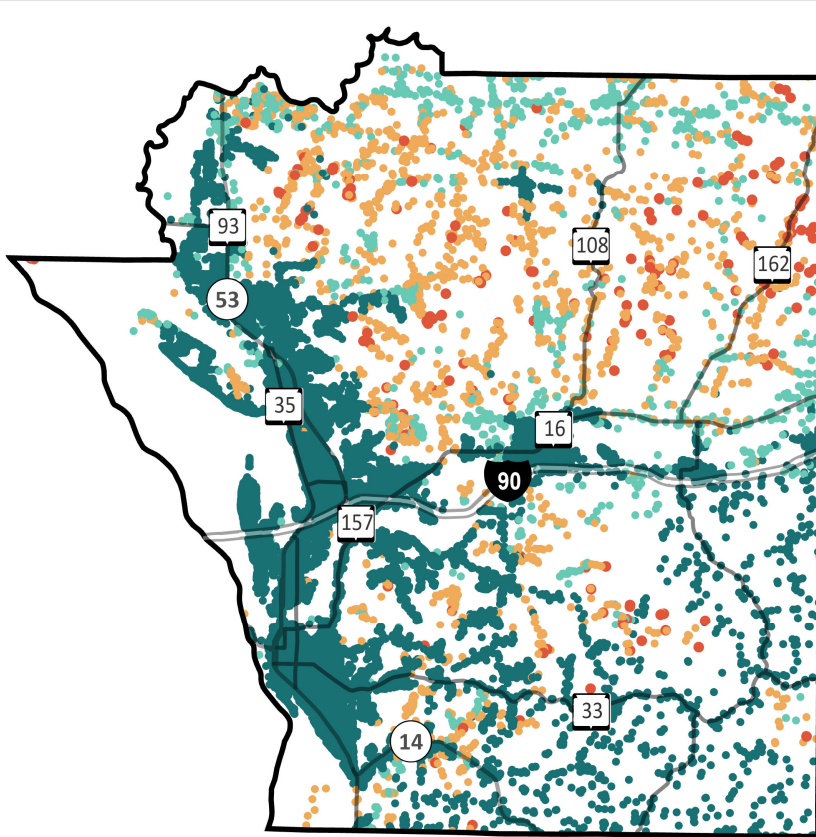
La Crosse County



Total BSLs **41,759**

Underserved,
Unservd and No
Service Count **3,374**

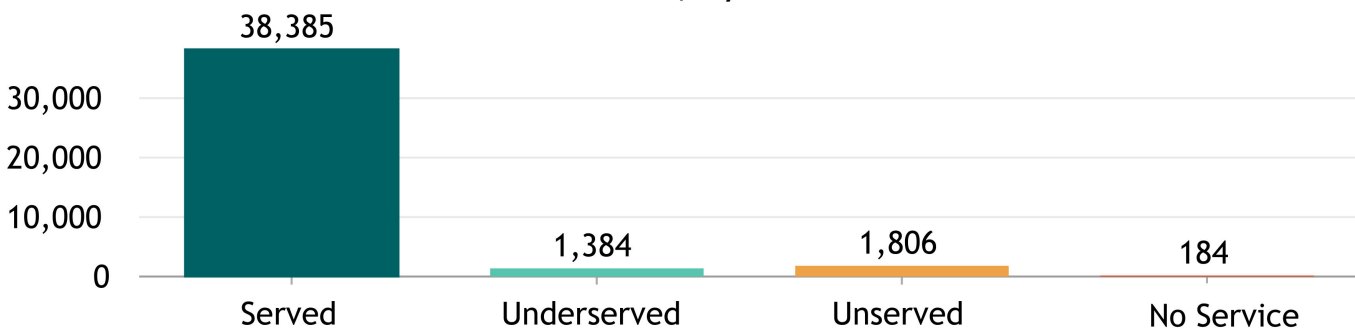
Source: FCC Broadband Data Collection BSL Service Status as of June 30, 2023



Explore the Broadband Planning Map at <https://maps.psc.wi.gov/apps/WisconsinBroadbandPlanningMap/>

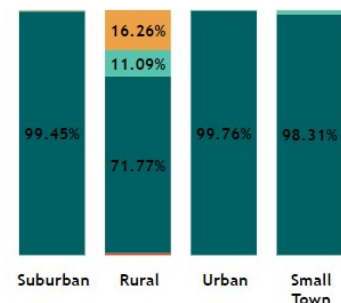


BSL count, by service status



"Broadband service" = an internet service with a minimum speed 100/20 Mbps

% of BSLs, by urbanicity type, by service status



Wisconsin Broadband- Enforceable Funding Commitment

La Crosse County



41,759

Count of Total BSLs

3,374

Count of Underserved, Unserved, and No Service BSLs

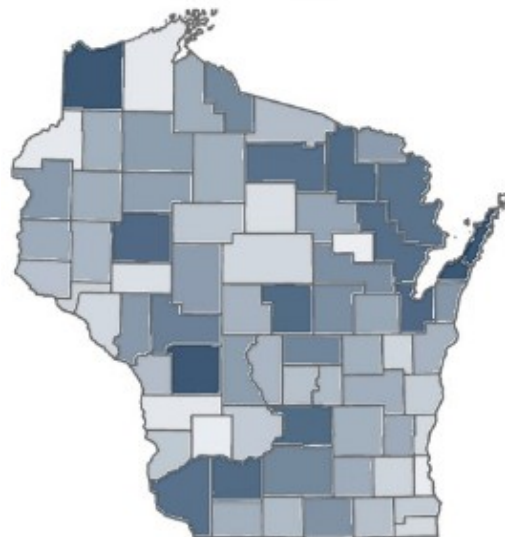
Source: FCC Broadband Data Collection BSL Service Status as of June 30, 2023

"Enforceable Funding Commitment", (EFC) for the purposes of BEAD is any "in progress" award that will build service of at least 100/20 to all locations by either a wireline cable or fiber connection, or a licensed fixed wireless connection. This includes a subset of state awards, all ARPA awards, all USDA Reconnect awards, RDOF, and E-ACAM.

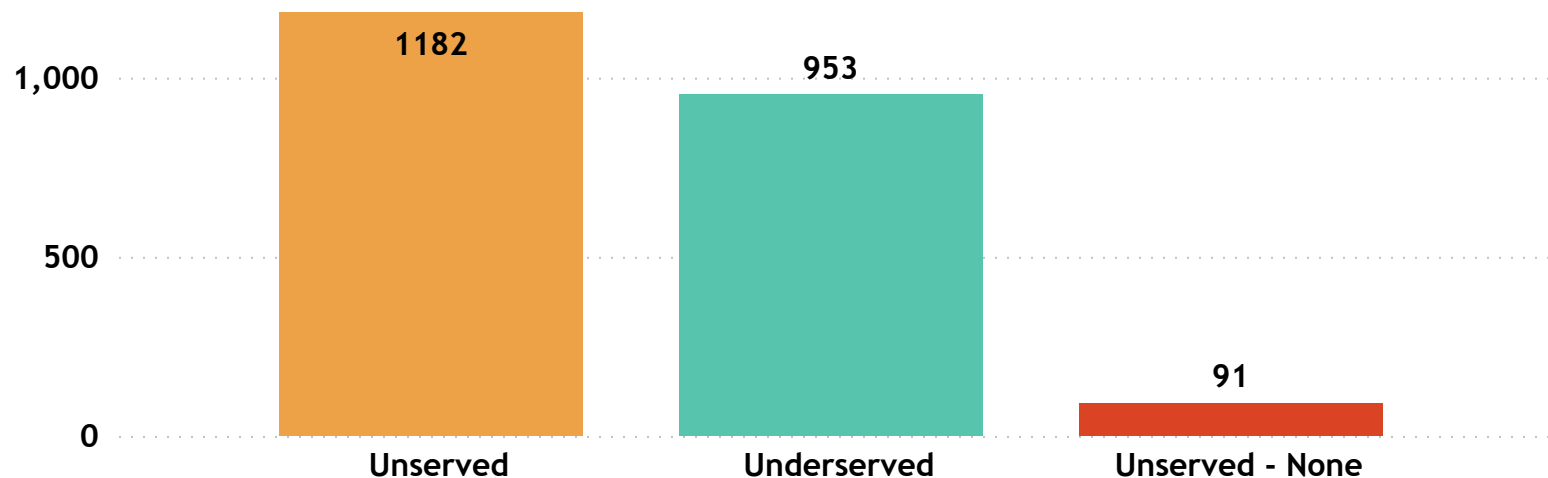
Estimated Underserved, Unserved and No Service Locations without Enforceable Funding Commitment

2,226

Estimated Underserved, Unserved and No Service Locations without EFC (count of locations **min** to **max**)



Estimated Underserved, Unserved, and No Service locations without EFC



La Crosse County

FCC service as of December 31, 2022

17

ISP

Brightspeed

Bug Tussel Wireless LLC

CenturyLink (owned by Lumen)

Charter Communications Inc

Consolidated Communications, Fidium

Coon Valley Farmers Telephone

Fusion

Hiawatha Broadband Communications, Inc.

Hoyos Consulting, LLC

Lynxx Networks

Mediacom Wisconsin LLC

Metronet Holdings

TDS Telecom

T-Mobile US

United States Cellular Corporation

Verizon

Voyant Communications

Wisconsin Broadband Affordability- Plan Cost

'Broadband service' = an internet service with a minimum speed 100/20 Mbps

ISPs in Wisconsin: 126

ISPs in La Crosse County: 17

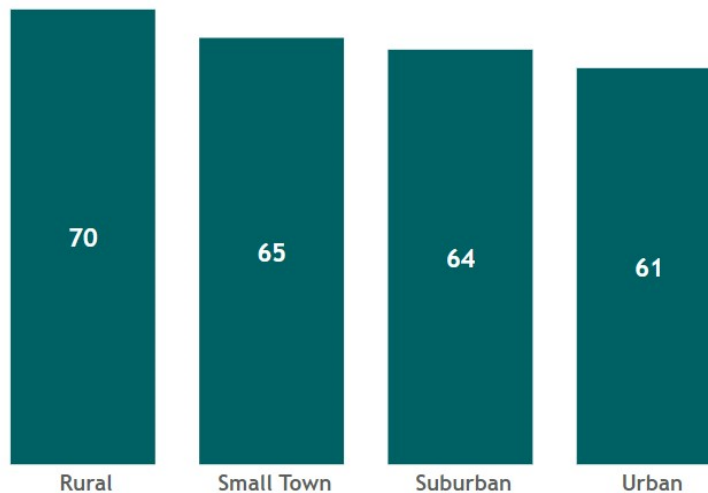
State Minimum Broadband Monthly Price Range
\$ 49.95 - \$ 156.50

State Average of Minimum Broadband Price/ Month
\$64.85

WI Household (HH) Median Income
\$67,080

AFFORDABILITY CRITERIA:
1.17% of Household Income

WI Average Minimum Broadband Price/ Month (in \$) by Urbanicity



Source: Service offerings from ISPs representing 2,200 price offerings across all counties.

| HH annual income-range (\$) | Broadband Plan* monthly cost |
|-----------------------------|------------------------------|
| less than \$15K | less than \$15 |
| \$15K - \$24K | \$15 - \$24 |
| \$25K - \$39K | \$25 - \$38 |
| \$40K - \$54K | \$39 - \$52 |
| \$55K - \$69K | \$53 - \$67 |
| \$70K - \$84K | \$68 - \$81 |
| \$85K - \$99K | \$82 - \$96 |
| \$100K - \$150K | \$97 - \$146 |
| \$150K+ | \$147+ |

* Broadband plan: is a plan providing internet service of a minimum speed of 100/20Mbps

The commonly accepted Broadband cost-burden threshold's income (see worldwide affordability target by 2025)

La Crosse County

Average of Minimum Broadband Price/ Month

\$ 59.41

La Crosse County

Household (HH) Median Income

\$ 60,307

Wisconsin HHs: 2,401,818

La Crosse County HHs: 48,105

Source: ACS 5y 2017-2021