

Wisconsin Broadband Access- Serviceable Locations (BSL)

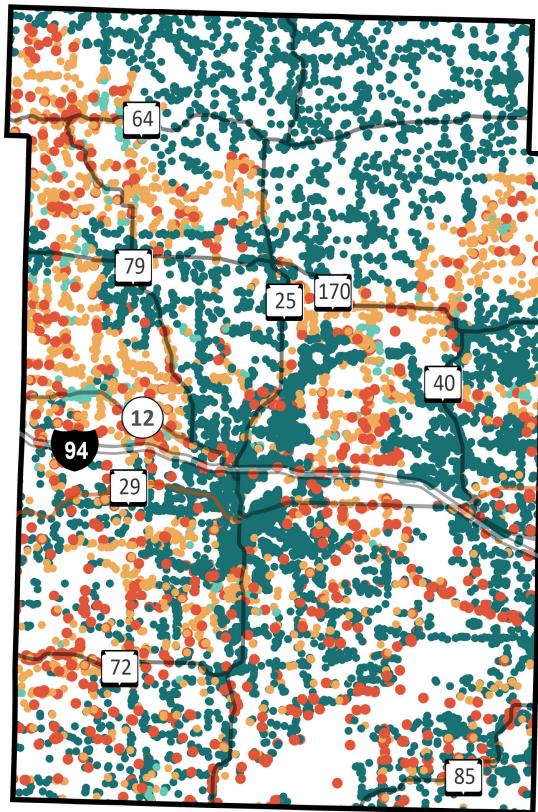
Dunn County



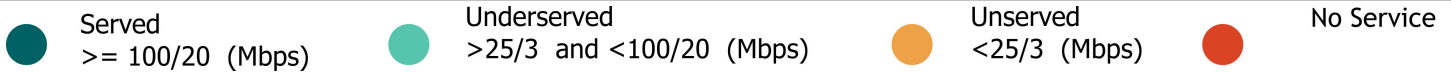
Total BSLs **19,047**

Underserved, Unservd and No Service Count **4,115**

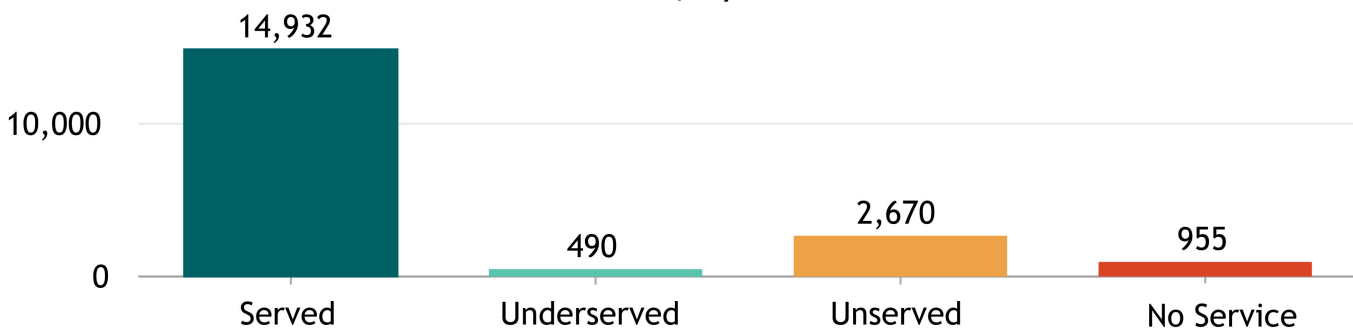
Source: FCC Broadband Data Collection BSL Service Status as of June 30, 2023



Explore the Broadband Planning Map at <https://maps.psc.wi.gov/apps/WisconsinBroadbandPlanningMap/>



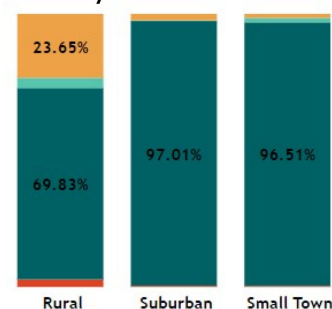
BSL count, by service status



"Broadband service" = an internet service with a minimum speed 100/20 Mbps



% of BSLs, by urbanicity type, by service status



Note: For counties having 100% BSL in the same urbanicity type only one bar is displayed.

Wisconsin Broadband- Enforceable Funding Commitment

Dunn County



19,047
Count of Total BSLs

4,115
Count of Underserved,
Unserved, and No Service BSLs

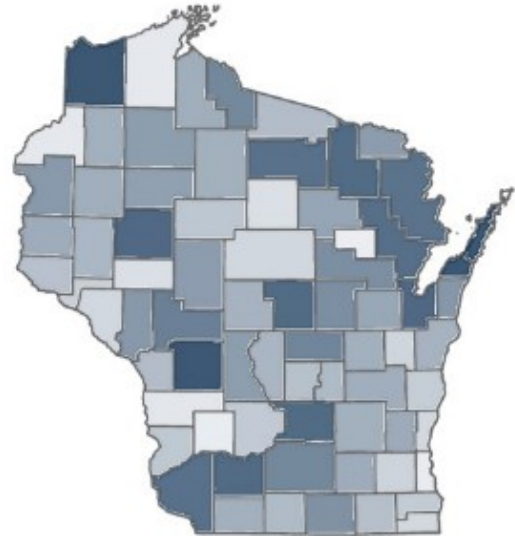
Source: FCC Broadband Data Collection BSL Service Status as of June 30, 2023

"Enforceable Funding Commitment", (EFC) for the purposes of BEAD is any "in progress" award that will build service of at least 100/20 to all locations by either a wireline cable or fiber connection, or a licensed fixed wireless connection. This includes a subset of state awards, all ARPA awards, all USDA Reconnect awards, RDOF, and E-ACAM.

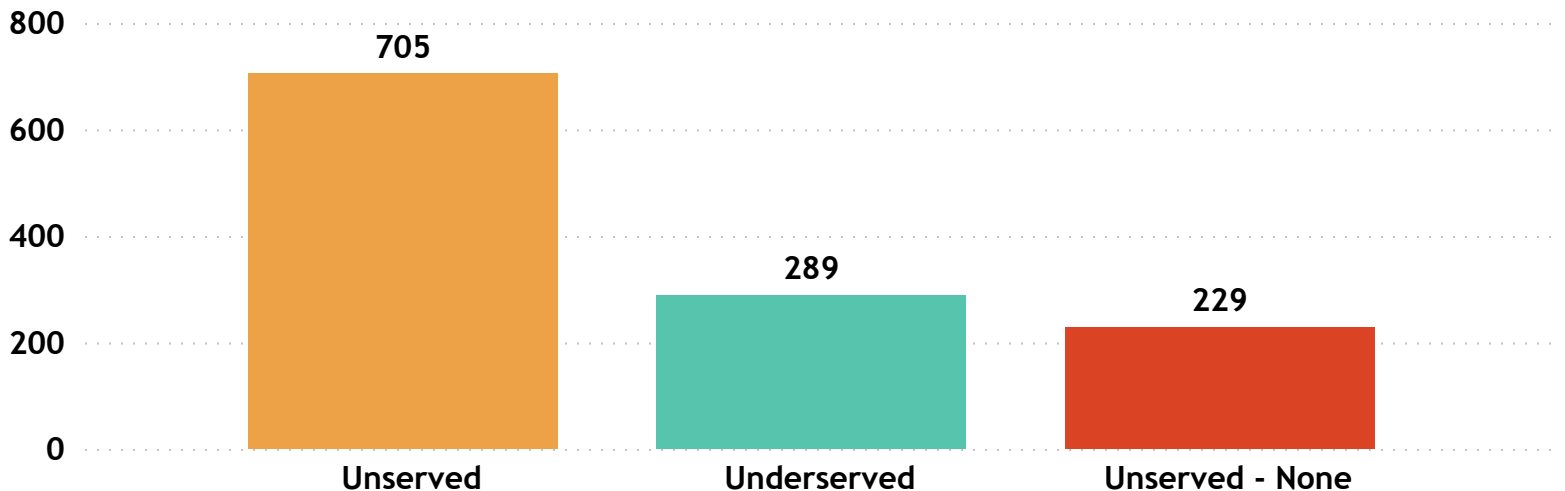
**Estimated Underserved,
Unserved and No Service
Locations without
Enforceable Funding
Commitment**

1,223

Estimated Underserved, Unserved
and No Service Locations without EFC
(count of locations **min** to **max**)



Estimated Underserved, Unserved, and No Service locations without EFC



Dunn County

FCC service as of December 31, 2022

18

ISP
▲

AT&T Inc
Baldwin Broadband
Bloomer Telephone Company
Bug Tussel Wireless LLC
Celect Communications
CenturyLink (owned by Lumen)
Charter Communications Inc
CL/NG - Clear Lake Telephone Company
CL/NG - NextGen Communications, LLC
Consolidated Communications, Fidium
Hiawatha Broadband Communications, Inc.
LTD Broadband
Mosaic Technologies
NetFortris
Ntec
T-Mobile US
Verizon
West Wisconsin Telcom Cooperative, Inc.

Wisconsin Broadband Affordability- Plan Cost

'Broadband service' = an internet service with a minimum speed 100/20 Mbps

ISPs in Wisconsin: **126**

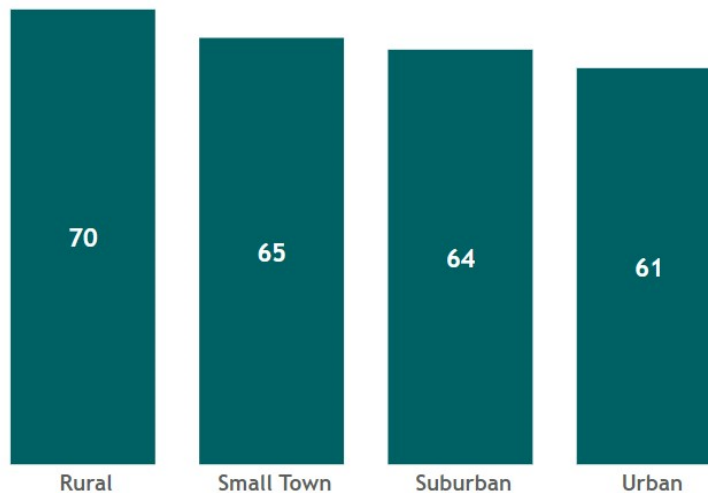
ISPs in Dunn County : **18**

State Minimum Broadband
Monthly Price Range
\$ 49.95 - \$ 156.50

State Average of Minimum
Broadband Price/ Month
\$64.85

WI Household (HH)
Median Income
\$67,080

WI Average Minimum Broadband Price/
Month
(in \$) by Urbanicity



Source: Service offerings from ISPs representing 2,200 price offerings across all counties.

AFFORDABILITY CRITERIA:
1.17% of Household Income

HH annual income-range (\$)	Broadband Plan* monthly cost
less than \$15K	less than \$15
\$15K - \$24K	\$15 - \$24
\$25K - \$39K	\$25 - \$38
\$40K - \$54K	\$39 - \$52
\$55K - \$69K	\$53 - \$67
\$70K - \$84K	\$68 - \$81
\$85K - \$99K	\$82 - \$96
\$100K - \$150K	\$97 - \$146
\$150K+	\$147+

* Broadband plan: is a plan providing internet service of a minimum speed of 100/20Mbps

The commonly accepted Broadband cost-burden threshold's income (see worldwide affordability target by 2025)

Dunn County

Average of Minimum Broadband Price/ Month

\$ 69.63

Dunn County

Household (HH) Median Income

\$ 59,588

Wisconsin HHs: 2,401,818

Dunn County HHs: 17,124

Source: ACS 5y 2017-2021