

# Wisconsin Broadband Access- Serviceable Locations (BSL)

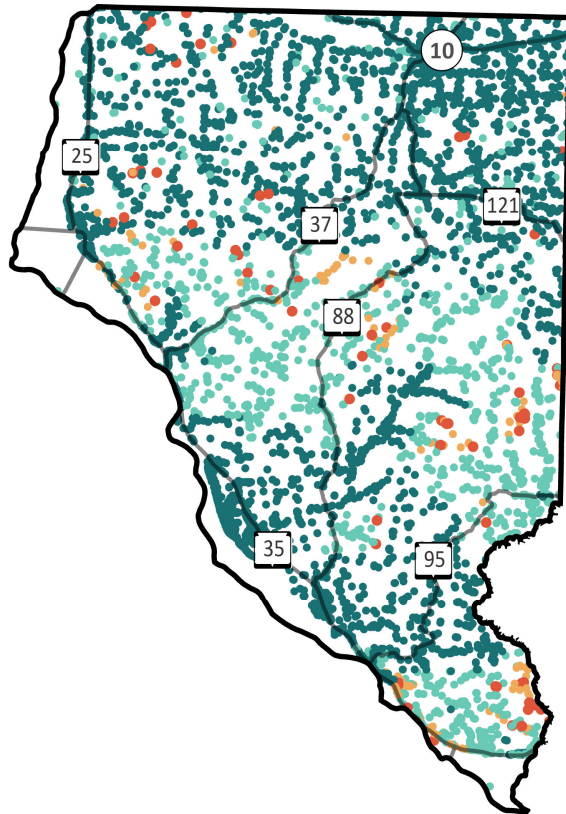
## Buffalo County



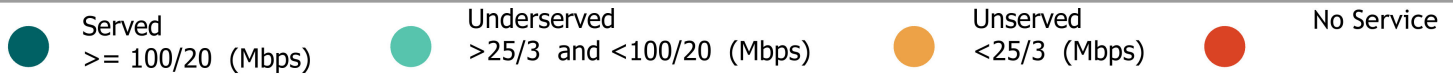
Total BSLs **8,868**

Underserved,  
Unservd and No  
Service Count **1,894**

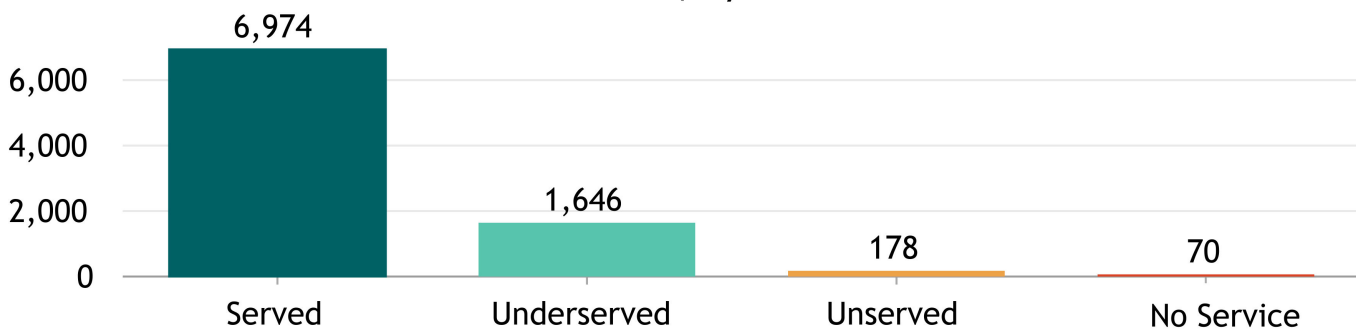
Source: FCC Broadband Data Collection BSL Service Status as of June 30, 2023



Explore the Broadband Planning Map at <https://maps.psc.wi.gov/apps/WisconsinBroadbandPlanningMap/>



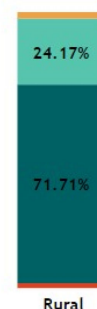
BSL count, by service status



"Broadband service" = an internet service with a minimum speed 100/20 Mbps



% of BSLs, by urbanicity type, by service status



Note: For counties having 100% BSL in the same urbanicity type only one bar is displayed.

# Wisconsin Broadband- Enforceable Funding Commitment

Buffalo County



8,868

Count of Total BSLs

1,894

Count of Underserved, Unserved, and No Service BSLs

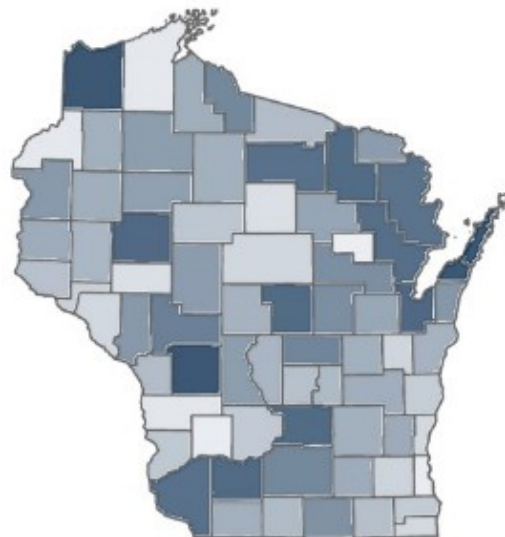
Source: FCC Broadband Data Collection BSL Service Status as of June 30, 2023

"Enforceable Funding Commitment", (EFC) for the purposes of BEAD is any "in progress" award that will build service of at least 100/20 to all locations by either a wireline cable or fiber connection, or a licensed fixed wireless connection. This includes a subset of state awards, all ARPA awards, all USDA Reconnect awards, RDOF, and E-ACAM.

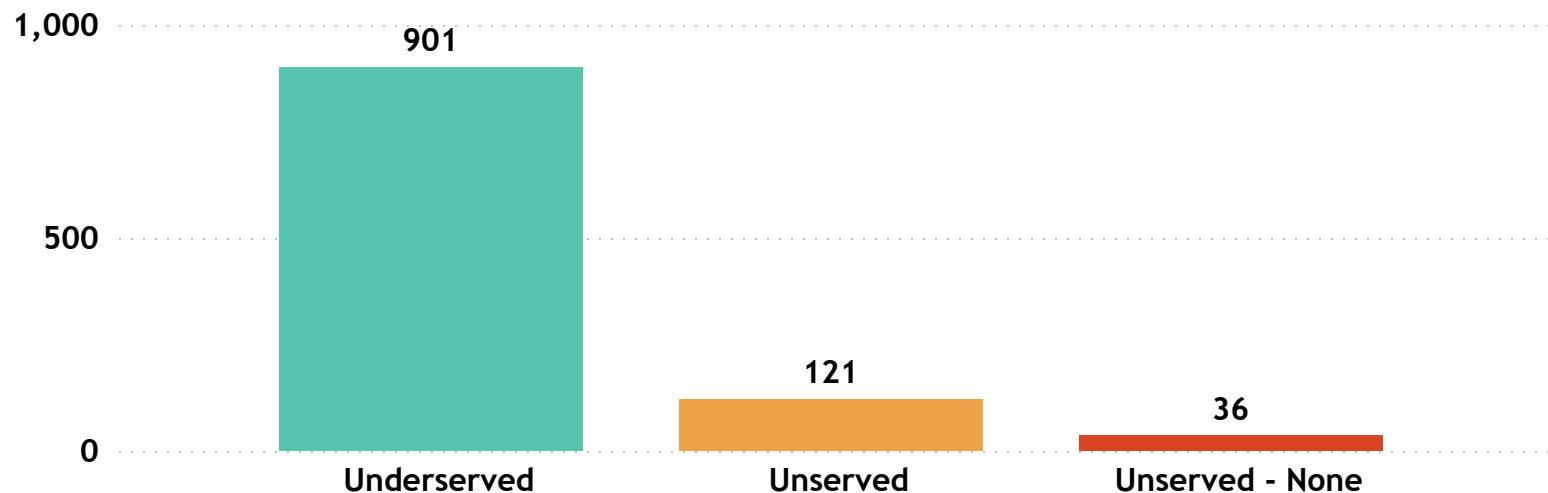
Estimated Underserved, Unserved and No Service Locations without Enforceable Funding Commitment

1,058

Estimated Underserved, Unserved and No Service Locations without EFC (count of locations **min** to **max**)



Estimated Underserved, Unserved, and No Service locations without EFC



## Buffalo County

FCC service as of December 31, 2022

16

ISP  
▲

---

Brightspeed  
Bug Tussel Wireless LLC  
CenturyLink (owned by Lumen)  
Charter Communications Inc  
Cochrane Cooperative Telephone Company  
Consolidated Communications, Fidium  
Frontier  
Hiawatha Broadband Communications, Inc.  
LTD Broadband  
Ntec  
TCC - Tri-County Communications Cooperative Inc  
TDS Telecom  
T-Mobile US  
United States Cellular Corporation  
Verizon  
West Wisconsin Telcom Cooperative, Inc.

# Wisconsin Broadband Affordability- Plan Cost

'Broadband service' = an internet service with a minimum speed 100/20 Mbps

ISPs in Wisconsin: 126

ISPs in Buffalo County : 16

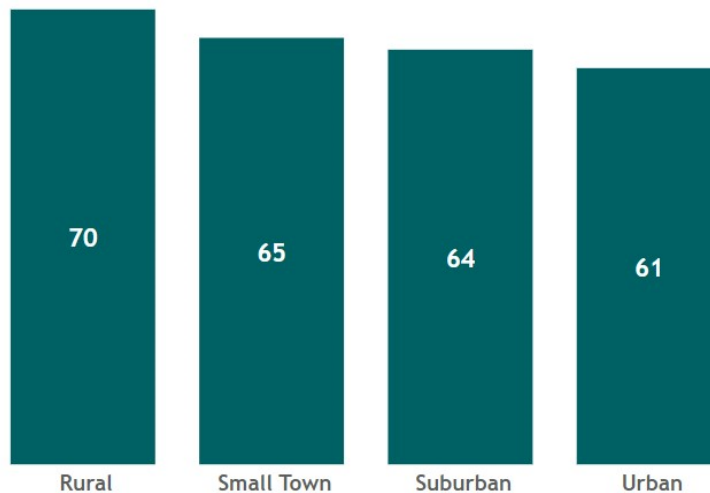
State Minimum Broadband Monthly Price Range  
\$ 49.95 - \$ 156.50

State Average of Minimum Broadband Price/ Month  
\$64.85

WI Household (HH) Median Income  
\$67,080



WI Average Minimum Broadband Price/ Month (in \$) by Urbanicity



Source: Service offerings from ISPs representing 2,200 price offerings across all counties.

**AFFORDABILITY CRITERIA:**  
**1.17% of Household Income**

HH annual income-range (\$)	Broadband Plan* monthly cost
less than \$15K	less than \$15
\$15K - \$24K	\$15 - \$24
\$25K - \$39K	\$25 - \$38
\$40K - \$54K	\$39 - \$52
<b>\$55K - \$69K</b>	<b>\$53 - \$67</b>
\$70K - \$84K	\$68 - \$81
\$85K - \$99K	\$82 - \$96
\$100K - \$150K	\$97 - \$146
\$150K+	\$147+

\* Broadband plan: is a plan providing internet service of a minimum speed of 100/20Mbps

The commonly accepted Broadband cost-burden threshold's income (see worldwide affordability target by 2025)

## Buffalo County

Average of Minimum Broadband Price/ Month

**\$ 70.20**

## Buffalo County

Household (HH) Median Income

**\$ 58,364**

Wisconsin HHs: 2,401,818

Buffalo County HHs: 5,751

Source: ACS 5y 2017-2021