



State of Wisconsin \ PUBLIC SERVICE COMMISSION

NESS FLORES, CHAIRMAN  
BRANKO TERZIC, COMMISSIONER  
MARY LOU MUNTS, COMMISSIONER  
4802 SHEBOYGAN AVENUE  
P.O. BOX 7854  
MADISON, WISCONSIN 53707

December, 1985

To The Honorable Anthony Earl, Governor  
The Members of the Legislature and  
The People of Wisconsin:

I am pleased to present the Public Service Commission's report for the 1983-85 biennium in accordance with the requirements of Wisconsin Statutes.

This report briefly describes important decisions and provides background information on some of the more complex issues facing the commission.

The past biennium has been marked by radical changes in utility industries. The breakup of American Telephone & Telegraph (AT&T) has led to an increase in the number of telecommunications utilities. Changes in energy utility economics have led to serious conservation efforts and prompted utilities to diversify into non-utility businesses. In response to these changes, the commission has conducted investigations into the issues and has ordered the implementation of new and innovative programs that will continue to ensure adequate and reasonably priced utility service for all customers.

Highlights of the biennium include:

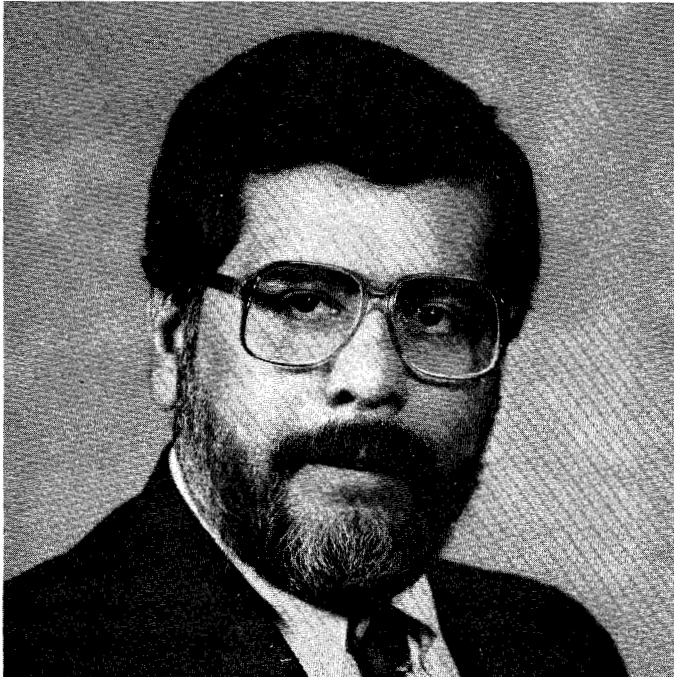
- Rate decreases ordered for Wisconsin Electric Power Company, Wisconsin Power & Light and Wisconsin Public Service Corporation.
- Start-up of PSC-ordered Utility Weatherization Assistance Program.
- Implementation of energy conservation measures that will continue to slow growth in demand for electricity, thereby delaying the need for new power plants.
- Development of new programs to deal with the problems of low-income energy users: new Cold Weather Disconnection Rules and Early Identification Program.
- Application of a forward-looking regulatory strategic planning process to energy utility financial issues.
- Certification of new long-distance resellers and other telephone common carriers.
- Investigation into the formation of holding companies by utilities for diversification purposes.

Should you have any questions concerning our programs and services, we welcome your further inquiry.

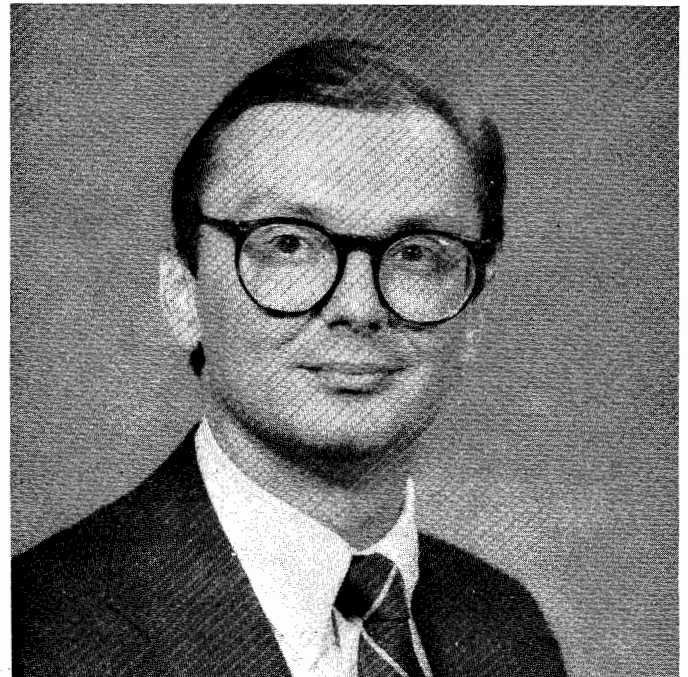
Sincerely,

Ness Flores  
Chairman

**COMMISSIONERS**



**Chairman Ness Flores**  
1983-1989



**Commissioner Branko Terzic**  
1981-1987



**Commissioner Mary Lou Munts**  
1985-1991



**Commissioner Stanley York**  
1979-1984  
(Chairman 1979-1983)

# CONTENTS

|  | PAGE |
|--|------|
| <b>UTILITY REGULATION</b>  |      |
| PSC Sets Utility Rates, Services .....   | 1    |
| PSC Regulates 916 Utilities .....  | 1    |
| <b>ELECTRIC AND GAS</b>  |      |
| Changes in Energy Utility Economics Prompt Diversification .....   | 2    |
| Conditions Set For Promotional Use of Ratepayer Money .....  | 3    |
| Electric Rates Reduced .....   | 3    |
| Electric Rate Case Statistics .....  | 4    |
| Investigation of Nuclear Decommissioning Financing Reopened .....  | 4    |
| PSC Developed New Fuel Cost Forecasting Method .....   | 5    |
| PSC Backs Sulfur Dioxide Emissions Limits .....  | 5    |
| New Electric Extension Rules Implemented .....   | 5    |
| New Power Plants Added .....   | 5    |
| PSC Develops Performance Indicator Project .....   | 5    |
| PSC Participated in FERC Pipeline Rate Cases .....   | 6    |
| Natural Gas Rate Case Statistics .....   | 6    |
| <b>ENERGY CONSERVATION</b>   |      |
| Utilities Must File Long-Range Plans with PSC .....  | 7    |
| ● Advance Plan IV: Conservation Delays Need for New Power Plants .....                                   | 7    |
| ● PSC Studies Western Wisconsin Transmission Plans and Possible Purchase<br>of Canadian Hydropower ..... | 7    |
| PSC Orders Utility Weatherization Assistance Program .....   | 8    |
| ● Utility Conservation Programs Expand .....   | 8    |
| ● Energy Conservation Expenditures .....   | 8    |
| ● Weatherization Energy Savings Evaluated .....  | 9    |
| ● Wisconsin Gets Federal Weatherization Funds .....  | 9    |
| ● PSC Wins Conservation Awards .....   | 9    |
| ● Weatherization Statistics .....  | 9    |
| <b>CONSUMER SERVICES</b>   |      |
| New Initiatives in Energy Assistance for Low-Income Customers .....                                      | 10   |
| ● Cold Weather Disconnection Rules .....   | 10   |
| ● Fall Service Restoration Effort .....  | 10   |
| ● Early Identification Program .....   | 10   |
| ● Interagency-Utility Conferences .....  | 10   |
| ● Low-Income Energy Task Force Recommendations .....   | 10   |
| ● Weatherization Plans for Rental Properties .....   | 10   |
| PSC Mediates Consumer Problems with Utilities .....  | 11   |
| Consumer Contact Statistics .....  | 11   |
| <b>TELECOMMUNICATIONS</b>  |      |
| PSC Participated in Reorganization of AT&T .....   | 12   |
| PSC Sets Wisconsin Bell's Rates, Orders Refunds .....  | 12   |
| Telephone Rate Case Statistics .....   | 13   |
| PSC Regulates Long-Distance Resellers .....  | 13   |
| Access Charges to Long-Distance Companies Set .....  | 13   |
| Private Pay Phones Get PSC OK .....  | 14   |
| New Law Streamlines Small Telephone Company Rate Cases .....   | 14   |
| Small Telephone Company Rate Case Statistics .....   | 14   |

**CONTENTS Continued**

|   | PAGE |
|---|------|
| Local Measured Service Proposals Rejected .....                     | 15   |
| New Extended Area Service Rules Set .....                           | 15   |
| PSC Opposed FCC Subscriber Line Charge and Depreciation Rates ..... | 15   |
| <b>WATER AND SEWER</b>  |      |
| PSC Issues Water and Sewer Rate Orders .....                        | 16   |
| Water Rate Case Statistics .....                                    | 16   |
| <b>COMMISSION ORGANIZATION</b>                                      |      |
| Organization Chart .....  | 17   |
| List of Administrators .....  | 18   |
| Division Descriptions .....   | 19   |
| Intervenor Compensation Expanded .....                              | 19   |
| Affirmative Action Report .....                                     | 20   |
| Alternative Employee Work Patterns .....                            | 20   |
| Budget Report .....   | 20   |
| PSC Publications Available .....                                    | 21   |
| <b>GLOSSARY</b> .....   | 22   |
| <b>APPENDIX A</b>   |      |
| Rate Actions  |      |
| <b>APPENDIX B</b>   |      |
| Other Commission Proceedings  |      |

## UTILITY REGULATION

### PSC Sets Utility Rates, Services

The Public Service Commission (PSC) is an independent regulatory agency that receives its authority and responsibilities from the State Legislature. The commission is responsible for the regulation of 916 public utilities as defined in s. 196.01, Wis. Stats., including those that are municipally owned.

The commission's purpose is to ensure that, in the absence of competition, adequate and reasonably priced service is provided to utility customers. The PSC sets utility rates and determines levels for adequate and safe service. Other major responsibilities include the approval, rejection, or modification of the utilities' major construction applications (such as power plants, natural gas pipelines, and water towers and pumps), and the approval of utility stock issuances and bond sales.

The staff, under the direction of the commissioners, also conduct special programs such as research on the cost of providing various utility services or the conservation of natural gas or electricity. The commission's staff include auditors, accountants, engineers, rate analysts, attorneys, planners, research analysts, economists, consumer specialists, court reporters and paraprofessional and clerical support.

Typical types of utilities regulated include electric, natural gas, telephone, water and combined water and sewer. In Wisconsin, most activities of the 28 electric cooperatives as well as cable television are not under the jurisdiction of the PSC. Furthermore, fuel oil, propane, coal and gasoline are energy sources not under the commission's jurisdiction.

### PSC Regulates 916 Utilities

As of June 30, 1985, the PSC's regulatory powers and duties included the rates and services of:

- 96 electric utilities (83 are municipal)
- 16 gas distribution utilities (1 is municipal)
- 2 heating utilities (1 is municipal)
- 100 telephone utilities
- 24 long-distance resellers
- 8 long-distance companies
- 1 rural telephone switching company
- 23 radio common carriers
- 554 water utilities (541 are municipal)
- 92 sewer utilities (91 are municipal)
- 916 utilities

## ELECTRIC AND GAS

### Changes in Energy Utility Economics Prompt Diversification Efforts

In order to understand the financial position of Wisconsin's energy utilities, it is necessary to mention the radical changes that occurred in utility industry economics during the 1970's. Prior to the '70's, real electricity prices declined as ever larger power plants became more efficient and the demand for energy steadily increased. But suddenly, new plants could not deliver the economies of scale that were expected. The Arab oil embargo upset the entire energy world. Concern over the environmental impact of conventional power plants grew as did opposition to nuclear energy. Finally, safety restrictions forced on the industry, spurred by the 1979 accident at Three Mile Island, added greatly to the cost of nuclear plants. Likewise, stricter environmental controls increased the cost of coal-fired plants.

As prices increased, demand for electricity slowed and the risk of building a large plant often became more than a single company could bear. Now, regulatory agencies and even many utilities promote conservation and load management as better investments than building a new power plant.

#### Regulatory Strategic Planning

In response to these changes in utility economics, the PSC implemented a strategic planning process to help anticipate problems and reduce reactive decision-making. In the mid-1970's, the PSC began to use this forward-looking strategy to deal with construction plans and environmental issues. Strategic planning is now being applied to utility financial issues.

By setting goals for utility and commission operations, identifying issues, examining alternatives, implementing appropriate actions in a timely manner and measuring the results of these policies, the PSC hopes to reduce foreseeable risk and uncertainty in the energy utility industry and, consequently, better serve the public interest. Planning by the commission complements the long-range plans of utility management.

Since Wisconsin's energy utilities do not have to build new power plants in the near future, they have more funds than they need to reinvest in their own business. Allowing these earnings to be retained by

the utilities would result in excessive levels of common equity, imposing unacceptable costs on ratepayers. Therefore, the PSC has specifically tried to apply strategic planning to the issue of energy utility capital structure.

#### Utility Capital Structure

A utility's capital structure is composed of debt and equity. Mortgage bonds (long-term debt) and notes payable (short-term debt) are forms of debt, while common and preferred stock make up equity. A certain amount of common equity is necessary to ensure the utility's financial stability. However, because common equity is the most expensive source of capital, there is a level of equity above which the cost to ratepayers exceeds any demonstrable benefit. During the past biennium, the commission determined that a common equity level of approximately 50% results in reasonable cost to ratepayers. Staff is currently working with energy utilities to achieve that composition.

Ways to reduce common equity include buying back common stock, increasing the cash dividend paid to stockholders or diversifying. However, buying back stock whose market price is currently above its book value would result in an earnings dilution and is unappealing to stockholders. Higher cash dividends would mean greater tax liability to investors. Some see diversification—taking excess shareholder money out of the utility and investing it in another area—as the most favorable method for reducing a utility's common equity since it would attempt to increase the value of the business and could stimulate economic development in Wisconsin.

#### Financial Forecasts

As part of the application of regulatory strategic planning to utility financial issues, the PSC now requires major Wisconsin energy utilities to submit ten-year forecasts of their key financial variables in annual rate case filings. These variables include source and use of funds, equity ratios and external financing plans. These forecasts will help the PSC ensure adequate capitalization for future needs while identifying retained earnings which could be used for non-utility investment.

Now, Wisconsin utilities have increased stability to pursue innovative programs in the areas of conservation, customer service, weatherization and alternative energy use. However, higher than expected

growth in the demand for electricity, acid rain legislation that might require expensive emissions control measures, costly repairs to nuclear plants or another energy crisis could upset the utilities' strong cash position.

### **Holding Company Law**

During an October 1985 special session on economic development, the Legislature passed a bill allowing utilities to form holding companies in order to diversify into non-utility businesses. Legislators, utility representatives, the commission and other groups participated in writing the bill. The new law, s. 196.795, requires the PSC to examine utility requests to reorganize into holding companies and report periodically to the Legislature on the impact of diversification activities. For electric utilities, the law limits investment in outside ventures to an amount equal to 25% of total assets.

Some gas and telephone utilities have already formed holding companies, so the PSC has been investigating its authority to control utility reorganization. Wisconsin Gas Company formed WICOR in 1980. North-West Telecommunications, Peoples Telephone Company and Northeast Telephone Company have also reorganized without prior PSC approval.

Noting the new law, the commission closed out its investigation in December, 1985.

### **Conditions Set For Promotional Use of Ratepayer Money**

In March 1985, the commission eased its restrictions on the use of ratepayer funds for promotional efforts by the state's electric utilities. The ruling came in reply to utility requests in connection with their current efforts to promote economic development in the state.

The commission ruled that utilities may use ratepayer money for promotions to seek new industrial

customers if the utilities can show that the extra growth and demand for power would not raise costs to customers.

A 1984 environmental impact statement prepared by PSC staff found that costs would not rise if the increased sales take place for only a few years and then stop, or if they are limited to off-peak hours.

Electric utilities may use stockholder money to promote Wisconsin industry as they wish.

### **Electric Rates Reduced**

During the past biennium, the PSC found itself in the enviable position of being able to reduce some electric utilities' rates. Wisconsin Electric Power Company, Wisconsin Power and Light Company and Wisconsin Public Service Corporation had rate decreases.

Wise regulation and sound management, in addition to reductions in interest costs and inflation, account for Wisconsin's stable or declining rates.

Due to the commission's emphasis on conservation, as well as a slowdown in the historic rate of growth in demand for electricity, construction of conventional power plants has been delayed. Also, Wisconsin utilities did not overextend themselves in building nuclear plants, as so many other states have. Previous commission actions required utilities to withdraw from two proposed nuclear plant projects. As a result, Wisconsin has avoided the high construction costs and problems of rapidly increasing rates that other states' utilities now face.

In 1978, the PSC placed a moratorium on the planning or application for new nuclear plants until reasonable progress was made in resolving waste disposal, fuel supply and decommissioning issues. In 1984, the Legislature reinforced the PSC's policy by making the moratorium law.

**ELECTRIC AND GAS Continued**

| <b>Electric Rate Cases</b>         |                                   |              |              |             |                             |
|------------------------------------|-----------------------------------|--------------|--------------|-------------|-----------------------------|
| (Class A investor-owned utilities) |                                   |              |              |             |                             |
| Docket                             | Utility                           | Requested    | Granted      | Final Order | %<br>Increase<br>(Decrease) |
| 3270-UR-12                         | Madison Gas & Electric Co.        | \$10,187,000 | \$ 3,216,000 | 02/28/84    | 3                           |
| 3270-UR-13                         | Madison Gas & Electric Co.        | 5,932,000    | 223,000      | 07/26/85    | .2                          |
| 4220-UR-4                          | Northern States Power Co.         | 7,513,000    | 5,248,000    | 07/19/83    | 3                           |
| 5820-UR-12                         | Superior Water, Light & Power Co. | 1,489,885    | 1,125,787    | 12/20/84    | 5                           |
| 6630-ER-18                         | Wis. Electric Power Co.           | -            | -20,550,000  | 12/22/83    | (2)                         |
| 6630-ER-19                         | Wis. Electric Power Co.           | - 8,100,000  | -26,480,000  | 01/03/85    | (3)                         |
| 6680-UR-13                         | Wis. Power & Light Co.            | 8,800,000    | 5,679,000    | 08/30/83    | 2                           |
| 6680-UR-14                         | Wis. Power & Light Co.            | 18,900,000   | -14,404,000  | 10/09/84    | (4)                         |
| 6690-UR-20                         | Wis. Public Service Corp.         | 21,049,000   | -11,577,000  | 01/31/85    | (3)                         |

## Investigation of Nuclear Decommissioning Financing Reopened

In spring 1985, the commission reopened its investigation of methods to finance the decommissioning of nuclear plants. Several changes took place since the commission's last order in this matter, requiring further review. The federal tax law on decommissioning changed, utilities reported that no nuclear decommissioning insurance was available, the estimated cost of taking a nuclear plant out of service had increased and, finally, the commission wanted to apply regulatory strategic planning—a process that helps anticipate problems and reduce reactive decision-making—to the issue of nuclear decommissioning financing.

The utilities have already collected, and will continue to collect, money from ratepayers for the pur-

pose of decommissioning. The PSC must decide how utilities can use that money until it is actually needed for dismantling a nuclear plant.

In fall 1985, the commission required utilities with nuclear plants to place all present and future nuclear decommissioning funds into an external trust fund. Previously, utilities could use the money as they wished until it was needed for decommissioning. The commission chose the external fund method to ensure that the money will be available when it is necessary to take a plant out of service.

Wisconsin has three nuclear sites: Point Beach Nuclear Units I and II, owned by Wisconsin Electric Power Company; Kewaunee Nuclear Plant, owned jointly by Wisconsin Public Service Corporation, Madison Gas and Electric, and Wisconsin Power and Light; and the small Genoa plant owned by Dairyland Power Cooperative. The Genoa plant, however, is not under PSC regulation.



## PSC Developed New Fuel Cost Forecasting Method

The PSC developed an alternative method for treating fuel costs in electric utility rate cases to replace the fuel adjustment clause.

The Legislature mandated the elimination of the fuel adjustment clause, effective January 1, 1984. Under this clause, utilities had been able to raise and lower rates each month to reflect changes in the cost of fuel and power purchased from other utilities.

Using the new plan, a fuel cost range is determined for each utility. This mechanism requires that a utility's fuel cost vary by more than 10% in one month or 3% in one year before it can apply to the PSC for rate review. If fuel costs go down and, as a result, a utility overcollects for fuel expense in rates, the commission would initiate a rate review.

## PSC Backs Sulfur Dioxide Emissions Limits

The PSC, in conjunction with the Department of Natural Resources and the Department of Administration evaluated the cost to utilities to reduce sulfur dioxide emissions from existing coal-fired power plants to the DNR's proposed limit of 3.2 pounds per million Btu's of energy input. Sulfur dioxide is a component of acid rain which has been blamed for damage to Wisconsin forests and lakes.

Power companies objected that the tougher standard would be too expensive to comply with, costing utility customers millions of dollars each year. PSC staff estimates of costs to consumers were lower than utility estimates. The commission concluded, however, that whether the utility or PSC staff cost estimates were correct, the cost was not significant compared to the benefit of a cleaner environment.

The PSC is also completing an acid deposition study and providing staff support to two acid rain-related committees created by the Legislature.

## New Electric Extension Rules Implemented

New electric extension rules for the largest investor-owned utilities went into effect in 1982. In 1984, the commission established administrative rules applying the extension guidelines uniformly to all electric utilities. They were reviewed by the Legislature and became effective December, 1984. By the end of 1985, the commission will have implemented the new rules for all small investor-owned and municipal utilities.

The 1982 rules essentially required all customers requesting a new extension of service to pay the full distribution-related cost of such construction, less the average embedded costs collected through monthly rates of existing customers. Modifications to these rules, included in the new administrative rules, now require utilities to provide standard overhead service drops, underground service laterals and transformers at no charge to customers.

## New Power Plants Added

Two new power plants began operations in 1985. Edgewater Unit 5, with a generating capacity of 380 megawatts (MW), owned jointly by Wisconsin Power & Light and Wisconsin Electric Power Company (WEPCO), went on line March 1.

Pleasant Prairie Unit 2, owned by WEPCO, has the capacity to provide 580 MW of electricity and began operating July 1.

## PSC Develops Performance Indicator Project

During the biennium, the PSC directed the development and implementation of a system called the Performance Indicator Project to measure and monitor the overall performance of major gas and electric utilities. A broad range of operating ratios—number of utility employees to customers, for example—is reviewed and compared with state averages in order to spot trends that may signal problems. In the future, the commission may be able to use these analyses in rate cases to gauge a utility's productivity against the rates it charges customers.

**ELECTRIC AND GAS** Continued**PSC Participated in FERC Pipeline Rate Cases**

The Wisconsin PSC, along with 11 other state commissions, intervened in natural gas pipeline rate cases before the Federal Energy Regulatory Commission (FERC) in an effort to reduce natural gas prices. The PSC and other states convinced FERC to limit

take-or-pay provisions in contracts between natural gas producers and pipeline companies because high take-or-pay provisions force pipelines to purchase natural gas at above-market prices.

The pipeline rate cases resulted in flat wholesale prices or actual decreases. At the retail level this action meant minimal increases or decreases, such as the May 1985 rate change in which residential rates fell 3 to 6 percent.

**Natural Gas Rate Cases**

(Class A investor-owned utilities)

| Docket     | Utility                               | Requested  | Granted     | Final Order | % Increase (Decrease) |
|------------|---------------------------------------|------------|-------------|-------------|-----------------------|
| 3020-GR-17 | Lake Superior District Power Company  | \$ 607,800 | \$ 557,700  | 10/20/83    | 5                     |
| 3270-UR-12 | Madison Gas & Electric Co.            | 3,368,000  | - 302,000   | 02/28/84    | (.3)                  |
| 3270-UR-13 | Madison Gas & Electric Co.            | 3,268,000  | 96,000      | 07/26/85    | .1                    |
| 4220-UR-4  | Northern States Power Co.             | 2,003,100  | 1,733,800   | 07/19/83    | 5                     |
| 5820-UR-12 | Superior Water, Light & Power Company | 581,757    | 282,653     | 12/20/84    | 3                     |
| 6640-GR-10 | Wis. Fuel & Light Co.                 | 1,307,000  | 845,124     | 09/23/83    | 2                     |
| 6650-GR-18 | Wis. Gas Co.                          | 13,041,000 | 10,329,000  | 12/29/83    | .2                    |
| 6650-GR-19 | Wis. Gas Co.                          | 13,232,000 | - 1,345,000 | 12/20/84    | (.2)                  |
| 6670-GR-10 | Wis. Natural Gas Co.                  | 10,852,000 | 5,790,000   | 09/08/83    | 2                     |
| 6670-GR-11 | Wis. Natural Gas Co.                  | 7,320,000  | 4,552,000   | 10/25/84    | 1                     |
| 6680-UR-13 | Wis. Power & Light Co.                | 3,379,000  | 2,069,000   | 08/30/83    | 1                     |
| 6680-UR-14 | Wis. Power & Light Co.                | 3,500,000  | 1,800,000   | 10/09/84    | 1                     |
| 6710-GR-10 | Wis. Southern Gas Co.                 | 1,684,672  | 633,981     | 10/11/83    | 2                     |
| 6710-GR-11 | Wis. Southern Gas Co.                 | 3,800,000  | 1,311,418   | 10/02/84    | 3                     |

## ENERGY CONSERVATION

### Utilities Must File Long-Range Plans With PSC

The Power Plant Siting Law (s. 196.491, Wis. Stats.) and the Public Service Commission's administrative rules (Chapter PSC 111, Wis. Adm. Code) require the major electric utilities serving Wisconsin to submit long-range advance plans to the PSC every two years.

The plans give 20-year forecasts of electricity usage and detail construction plans to meet the predicted energy needs. Discussions of utility research and customer service programs in the areas of conservation and load management are also included.

After the advance plans have been filed, PSC staff prepare an assessment of the plans. The utility's plans and the PSC's assessment are available through public libraries.

Next, public hearings are conducted. Written comments may be sent to the commission and are considered along with testimony given on the record at the hearing. Upon examination of the record and written comments, the commission will issue an order either approving or modifying the utility's plans. The plans must provide for an adequate supply of electrical energy, protect the public interest, coordinate utility plans with those of other agencies and include programs that discourage inefficient and excessive power use.

#### Advance Plan IV: Conservation Delays Need for New Power Plants

The major Wisconsin electric utilities submitted their fourth advance plans to the PSC in June 1984. Hearings on Advance Plan IV began in late 1984 and continue through fall 1985. The commission expects to issue its order sometime in early 1986.

The utilities' Advance Plan IV forecasts of Wisconsin's future electrical needs show a continuing trend of lower growth rates. Recently implemented conservation measures have significantly reduced the demand for electricity from earlier forecasted levels and have resulted in delaying the need for new power plants. According to the utilities' plan, the first conventional coal-fired power plant in western Wisconsin is projected to be completed in 1996. Eastern Wisconsin won't need a new plant until 1998.

The commission's Alternative Electric Power Supply Study suggests, however, that no additional generating plants will be necessary before the end of this century.

The Advance Plan III order, issued in May 1983, required utilities to emphasize conservation and renewable resources in their long-range electricity supply plans. As a result, utilities have successfully promoted residential use of conservation measures like water heater blankets and low-flow shower heads. The effects of additional energy conservation and use of renewable resources are being examined in Advance Plan IV.

An Alternative Electric Power Supply Study Update, completed in January 1984 by PSC staff, showed there is still room for more residential conservation. The largest potential for energy savings, however, lies in the commercial and industrial sectors. Staff will continue to gather data needed to determine exactly how commercial and industrial energy savings can be achieved.

#### PSC Studies Western Wisconsin Transmission Plans and Possible Purchase of Canadian Hydropower

Other issues in the Advance Plan IV proceeding are transmission needs for western Wisconsin and buying energy from Manitoba Hydro, a major Canadian utility. The Advance Plan III order required the western Wisconsin utilities to refile their transmission plans. Using information from a transmission planning study conducted jointly by the utilities, the commission, and Badger Safe Energy Alliance, a new plan was prepared. This transmission plan represented new levels of detail in system study and unprecedented involvement by intervenors and PSC staff. The commission approved the plan in June 1985.

The utilities' proposal to buy power from Manitoba Hydro is being considered by the commission as an alternative to building a new power plant in Wisconsin. This proposal, however, would involve the construction of a major new extra high voltage transmission line from Manitoba to Wisconsin. More hearings will be held to determine the advisability of the project.

**ENERGY CONSERVATION Continued**

**PSC Orders Utility Weatherization Assistance Program**

In April 1982, the PSC directed the state's ten largest gas and electric utilities to provide weatherization assistance to low-income customers. The goal of the Utility Weatherization Assistance Program is to make utility bills more manageable for low-income customers by reducing household energy use. As part of this order, gas utilities are required to spend at least .2% of their annual revenues on weatherization materials and labor. Electric utilities must spend .1%. Significant numbers of homes began receiving weatherization services in 1983. During the period January 1983-July 1985, 12,000 homes were weatherized by the Utility Weatherization As-

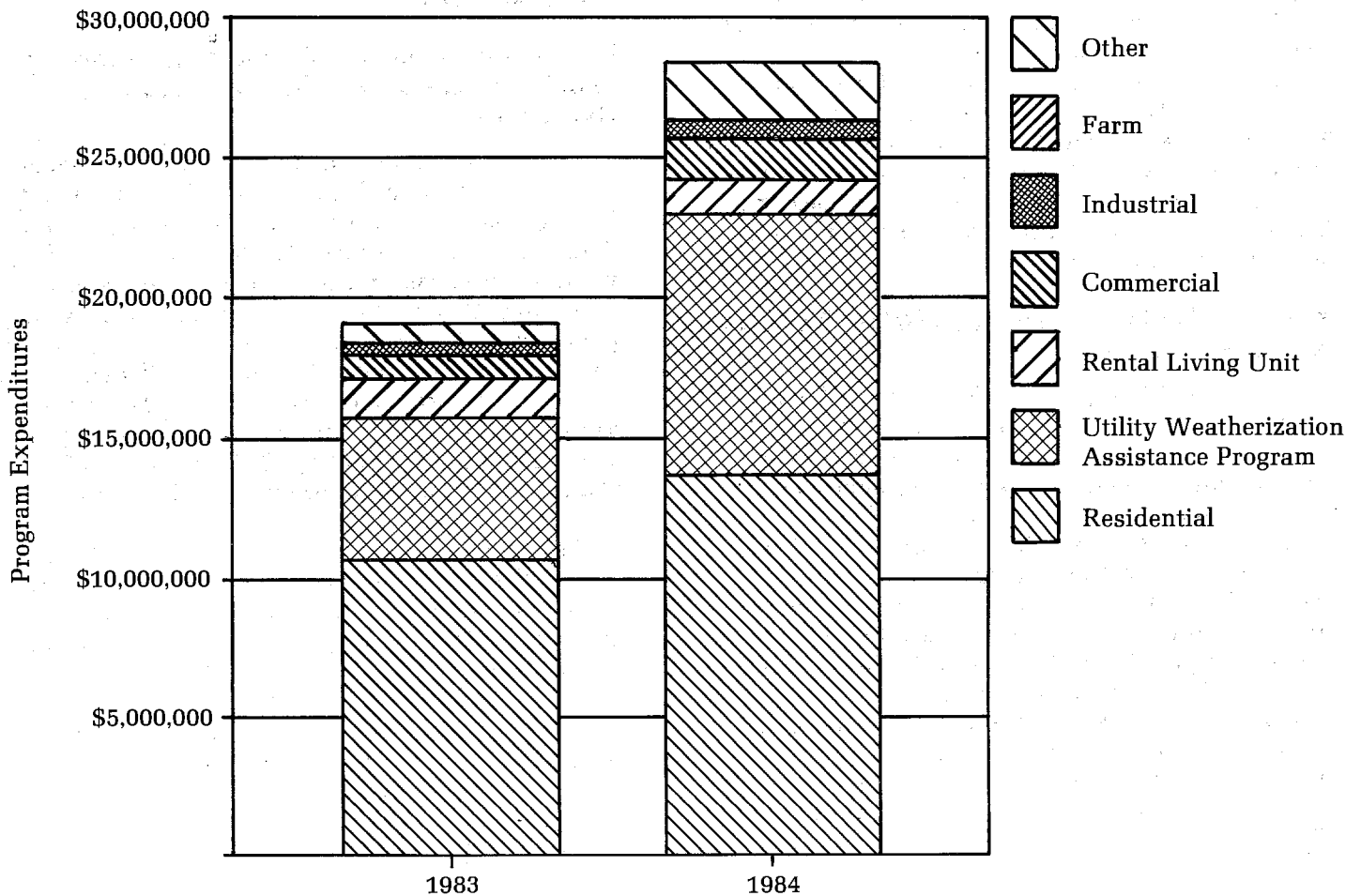
sistance Program at an average cost of \$1,800 each. All utility weatherization measures must pay for themselves in five years or less.

In July 1983, a legislative oversight committee approved a rule expanding the PSC's spending order to utilities. The new rule requires utilities to use at least .5% of their annual earnings for conservation activities.

**Utility Conservation Programs Expand**

During the biennium, the major Wisconsin gas and electric utilities continued to expand their programs for promoting energy conservation. As shown in the diagram below, 1984 expenditures reached over \$28 million, an increase of almost \$10 million over 1983. Expected expenditures for 1985 exceed \$30 million.

**Energy Conservation Expenditures By Program**



### Weatherization Energy Savings Evaluated

The PSC staff recently completed the first phase of a study to determine energy savings achieved by the Utility Weatherization Assistance Program. Those who participated in the evaluation saved 18-20% on utility bills. The second phase of the study will indicate which weatherization measures resulted in greater savings. First indications show that furnace replacements and modifications as well as sidewall insulation delivered highest savings.

### Wisconsin Gets Federal Weatherization Funds

In September 1983, the PSC began administering the federal Solar Energy and Energy Conservation Bank Program (Solar Bank). Solar Bank funds are

allocated to utilities to be used in combination with the PSC-ordered low-income weatherization funds. In 1985, Wisconsin received the third largest grant in the country and leads the nation in numbers of people receiving Solar Bank assistance. By the end of this biennium, the PSC had distributed \$2.8 million.

### PSC Wins Conservation Awards

In 1984, the PSC received two awards for its Utility Weatherization Assistance Program: the National Energy Innovators Award from the U.S. Department of Energy and one of ten Governor's Awards for Energy Innovation.

## Number of Households Weatherized Utility Weatherization Assistance Program

| Year           | Single Family<br>Dwellings | Multi-Family<br>Rental Dwellings | Total        |
|----------------|----------------------------|----------------------------------|--------------|
| Jan-Dec, 1983  | 2,388                      | 312                              | 2,700        |
| Jan-Dec, 1984  | 4,250                      | 550                              | 4,800        |
| Jan-July, 1985 | <u>4,000</u>               | <u>500</u>                       | <u>4,500</u> |
|                | 10,638                     | 1,362                            | 12,000       |

Single family homes were weatherized at an average cost of \$1,800 each, while multi-family dwellings were weatherized at an average cost of \$800 per unit.

## CONSUMER SERVICES

### New Initiatives in Energy Assistance For Low-Income Customers

The PSC, for more than a decade, has dealt with the energy hardships low-income energy users face. During the past biennium, several new initiatives were added.

#### Cold Weather Disconnection Rules

In 1984, the PSC strengthened the winter moratorium on utility service disconnection for unpaid bills, ordered in 1973, by adopting new, more stringent regulations. The new rules require utilities to take certain steps to ensure that disconnection of service won't endanger human health or life. Additional procedures for notifying social service agencies and police departments prior to disconnection, instead of afterward, were also defined.

#### Fall Service Restoration Effort

The number of households without utility service at the beginning of the heating season had grown from approximately 600 in 1974 to more than 11,000 in 1984. To combat this situation, the PSC now requires that utilities, with the help of local public and private social service agencies and police departments, make extensive efforts to contact all disconnected customers so that service can be restored before cold weather sets in.

#### Early Identification Program

The PSC asked Wisconsin's eleven largest gas and electric utilities to establish Early Identification Programs to identify customers who may have difficulty paying their bills. The utilities often refer these people to an appropriate agency for weatherization assistance, counseling or other help. By dealing with problems in their beginning stages, the commission hopes to prevent difficulties from becoming crises for customers and utilities.

#### Interagency-Utility Conferences

The success of the above-mentioned initiatives depends on communication between utilities, public and private social service agencies, law enforcement and PSC staff. To foster cooperation among these

groups, the commission directed the utilities to begin annual interagency-utility conferences. In 1984, seven such conferences were held throughout Wisconsin, attracting more than 1,200 people. Twenty-one conferences were planned for 1985 and are expected to bring together about 2,000 public and private agency and utility representatives.

First indications show the new Cold Weather Disconnection Rules, Fall Service Restoration Effort and Early Identification Programs to be effective in helping the immediate energy crisis of low-income customers. However, the commission is looking toward longer term measures from a statewide ad hoc Low-Income Energy Task Force.

#### Low-Income Energy Task Force Recommendations

The ad hoc Low-Income Energy Task Force was formed in January 1985 by a coalition of citizen groups, utilities, fuel suppliers and government agencies, including the PSC. The task force's goal is to develop a comprehensive plan for dealing with the problems low-income energy users face. In April 1985, the task force issued initial recommendations to improve and strengthen existing weatherization efforts of utilities, the PSC, Department of Health and Social Services and other community agencies.

Some of the recommendations urge new legislation or additional public funds. Most, however, can be implemented by utilities as part of the PSC-ordered Utility Weatherization Assistance and Early Identification Programs.

As a result of the task force's coordination recommendations, the PSC will instruct large utilities to take steps to ensure coordination between utility; DHSS energy assistance programs and other local efforts.

A major task force recommendation to the Legislature was included in the state's 1985-87 biennial budget requiring the Department of Administration to develop long-range, coordinated plans for a comprehensive statewide approach to resolving the energy crises facing low-income households.

Early in 1986 the task force will complete recommendations on an improved energy assistance program for low-income families.

#### Weatherization Plans For Rental Properties

An estimate by commission staff shows that there are approximately 142,000 multi-family rental

properties remaining to receive weatherization in Wisconsin. At the current rate, it would take 95 years to weatherize those dwellings.

The PSC staff has been studying ways to meet the challenge rental housing presents and has developed a third-party-financing, shared-savings proposal for master-metered, large rental structures. The utility would pay for all weatherization measures and then split the savings in utility bills with the customer.

As each energy utility files its next rate case, the commission will decide whether to implement this proposal to augment existing conservation programs.

## PSC Mediates Consumer Problems With Utilities

The PSC's Consumer Services Bureau (CSB) employs a number of consumer specialists to aid consumers in dealing with their utilities. During the biennium, the bureau handled almost 8,000 complaints.

The CSB can mediate most problems a customer may be having with a utility—bill disputes are a common example—if the utility and the customer have not been able to correct the situation on their own.

The PSC has the responsibility to see that electric, natural gas, telephone and water utilities work with customers in accordance with prescribed rules.

### Consumer Contacts

#### Complaints Handled by Consumer Services Bureau July 1, 1983 - June 30, 1985

| Utility Type            | No. of Complaints | % of Total |
|-------------------------|-------------------|------------|
| Gas                     | 3,224             | 41         |
| Telephone               | 2,162             | 27         |
| Electric                | 1,859             | 24         |
| Combined Gas & Electric | 380               | 5          |
| Combined Water & Sewer  | 189               | 2          |
| Miscellaneous           | <u>68</u>         | <u>1</u>   |
| Total                   | 7,882             | 100        |

## TELECOMMUNICATIONS

### **PSC Participated in Reorganization of AT&T**

The United States telephone industry has been dominated by American Telephone and Telegraph Company (AT&T) since its inception over 100 years ago. During the past 30 years, technological advances and several legal challenges have changed the telecommunications industry, threatening AT&T's dominant position.

As a result of the 1982 settlement of an anti-trust suit brought against AT&T by the U.S. Justice Department, AT&T agreed to reorganize and divest itself of the 22 Bell operating companies (BOC's), Western Electric and parts of Bell Laboratories. This reorganization and divestiture became effective January 1, 1984.

The PSC participated with other state commissions in litigation over the Federal Court's "Modification of Final Judgment," the consent decree that forced the breakup of AT&T (552 F. Supp. 131 (D.D.C. 1982), *Aff'd sub nom. Maryland v. United States*, 103 S. Ct. 1240 (1983)). The state commissions succeeded in preserving as much state jurisdiction as possible over telephone service and in opposing transfers of activities from the BOC's to AT&T that would have meant greater increases in local rates. For example, the BOC's were able to retain Yellow Pages revenues, and that money can be used to hold down the charge to customers for local phone service.

AT&T's plan for reorganization, modified by the court, required seven regional holding companies to be formed from the 22 BOC's. These holding companies provide various telephone services, and upon approval of the supervising federal court may also invest in other activities through fully separate subsidiaries.

American Information Technologies, Inc. (AMERITECH) is the Great Lakes Region's holding company, comprised of five BOC's covering Illinois, Indiana, Michigan, Ohio and Wisconsin. Each BOC remains subject to the regulation of its state utility

commission, however, the commissions are participating in a cooperative effort to monitor the flow of money between Ameritech and the Bell companies.

Local exchange service continues to be a regulated monopoly. Although long-distance transmission and sales of customer premises telephone equipment had been open to competition, the breakup of AT&T facilitated the entry of new companies into these markets. The divested BOC's are restricted to providing service within local access and transport areas (LATA's) and to providing local interconnection to long-distance carriers. AT&T Communications (ATTCOM), other common carriers and resellers assumed the long-distance service between Wisconsin's four LATA's previously provided by AT&T.

### **PSC Sets Wisconsin Bell's Rates, Orders Refunds**

As ordered by the Modified Final Judgment, Wisconsin Bell (formerly Wisconsin Telephone), was separated from AT&T January 1, 1984 and became part of AMERITECH. To prepare for the change in intrastate telephone service, the commission established a staff team to review the assignment and valuation of assets to be divided between AT&T and Wisconsin Bell.

In setting rates for the new Wisconsin Bell, the PSC split the financial burden of the breakup equitably between Bell and its 1.3 million customers. The PSC granted about half the increase the company wanted. The commission also set rates for AT&T Communications of Wisconsin (ATTCOM) applicable to long-distance calls between Wisconsin's four LATA's. Prior to divestiture the equipment and personnel providing these services were part of Wisconsin Telephone and AT&T Long Lines division.

Since the establishment of those rates, the commission has continued to review Wisconsin Bell's earnings and, in fact, has ordered two rate refunds and one rate reduction.



## Telephone Rate Cases

(Utilities having over 40,000 access lines)

| Docket     | Utility                       | Requested     | Granted      | Final Order | %<br>Increase<br>(Decrease) |
|------------|-------------------------------|---------------|--------------|-------------|-----------------------------|
| 6720-TR-36 | Wis. Tel. Co.                 | \$162,262,000 | \$88,680,000 | 12/20/83    | 15                          |
| 6720-TI-3  | Wis. Bell, Inc.               | —             | -23,160,000  | 12/18/84    | (3)                         |
| 6720-TI-3  | Wis. Bell, Inc.               | —             | -16,000,000  | 3/20/85     | (2)                         |
| 2180-TR-17 | Gen. Tel. Co. of<br>Wisconsin | 26,250,000    | 1,242,000    | 11/29/83    | 6                           |
| 4260-TR-9  | North-West Tel. Co.           | —             | 2,135,000    | 06/12/84    | 7                           |

## PSC Regulates Long-Distance Resellers

Decisions by the Federal Communications Commission (FCC) and the courts, and technological advances in switching and transmission have resulted in competition within the long-distance market. One telephone utility no longer enjoys a monopoly on interexchange services. By permitting the resale of interstate long-distance services, the FCC created a new industry. Consequently, the PSC opened an investigation of resale on the intrastate level.

In its June 1983 order, the commission authorized resale of intrastate toll service, but determined that resellers—companies that buy long-distance time from existing telephone utilities to sell to consumers—were public utilities and, therefore, subject to regulation. However, the PSC decided to exercise less than full traditional regulation of resellers. In order to be certified, resellers had to file a letter of intent to serve, including descriptions of services offered and customers served. The commission did not require resellers to file rates, relying on market forces to ensure reasonable and just prices.

After further investigation, however, the commission determined that Wisconsin Statutes required additional regulation of resellers. The primary change requires resellers to file tariffs with their letters of intent and makes the filed rates and any change in rates subject to PSC approval.

To date, 28 resellers have been certified in Wisconsin, five of which are also local telephone companies. There are three facility-based other common

carriers (OCC's) authorized to provide intrastate toll service in Wisconsin: MCI Telecommunications Corporation, GTE Sprint Communications Corporation and Western Union.

## Access Charges to Long-Distance Companies Set

As a result of the court-ordered breakup of American Telephone & Telegraph Company (AT&T), the PSC implemented a system of access charges for long-distance carriers. Resellers, AT&T and other common carriers (OCC's) must pay local telephone companies for providing local interconnection.

The investigation was divided into three parts. Part A established short-term access charges that mostly mirrored the Federal Communications Commission's (FCC) tariffs for interstate service. The charges, effective January 1, 1984, were later modified to reflect changes in the FCC's access charge structure.

Part B examined the long-term questions regarding local carrier compensation, cost allocations and access service rate design. As a result of this investigation, the PSC changed its inter-LATA access charges in November 1985, replacing the previous usage sensitive carrier common line charge with a flat-rate capacity charge. In order to set future access charges, the PSC will begin studies of state-specific costs and bypass—the use of alternative facilities to avoid access charges. Besides the flat capacity charge, however, current Wisconsin rates, in

**TELECOMMUNICATIONS** Continued

major part, continue to mirror the FCC-established charges.

Part C dealt with the use of Extended Area Service (EAS) facilities for transmission of long-distance calls by resellers and OCC's. It also determined how much local telephone companies should be compensated for any revenues lost from OCC's carrying unauthorized toll calls within LATA's.

**Private Pay Phones Get PSC OK**

In August 1985, the commission approved non-utility ownership of pay telephones. The action was prompted by a 1984 Federal Communications Commission (FCC) decision to allow private businesses and individuals to interconnect their coin-operated phones to the interstate long-distance network. Each state had to decide whether or not to allow use of these phones for in-state calls.

In Wisconsin, pay phone owners will not be allowed to charge more than the local telephone company for a local call. To ensure that local rates are not forced to rise as a result of customer ownership of pay phones, the commission asked utilities to file proposed rates for interconnection of these phones that will be sufficient to cover potential lost revenue. Rates are expected to be filed and approved by the end of 1985.

In November 1985, the commission reopened this case to review rates and restrictions it had placed

on toll calling and private pay phones that accept only one type of coin.

**New Law Streamlines Small Telephone Company Rate Cases**

The PSC participated in developing legislation to expedite the rate review process for telephone companies having fewer than 7,500 customers. The new law, s. 196.20(5) Wis. Stats., affects 86 telephone companies in Wisconsin, serving about 195,000 customers.

The commission must now act on the small telephone company's application within 120 days of its filing. Previously, there was no time limit.

The utilities still must apply to the commission for a rate increase and provide information on revenues, expenses and forecasts. The company also has to notify its customers of the pending rate case, giving them an opportunity to request a hearing. If there is a hearing, the PSC has 180 days to act on the petition.

PSC staff developed new administrative rules for implementing the law and effectively handled seven such rate cases. In each of the seven, the commission determined that the utility did not need an increase as large as requested.

**Small Telephone Company Rate Cases**

| Docket Number | Utility                              | Application Submitted | Notice Sent To Customers | Final Order | Requested | Granted   |
|---------------|--------------------------------------|-----------------------|--------------------------|-------------|-----------|-----------|
| 3310-TR-3     | Manawa Telephone Co.                 | 06/18/84              | 08/31/84                 | 12/13/84    | \$ 30,500 | \$ 12,000 |
| 2390-TR-100   | Greenwood Tel. Co.                   | 07/20/84              | 09/01/84                 | 12/20/84    | 62,000    | 61,000    |
| 3970-TR-100   | Mt. Vernon Tel. Co.                  | 07/20/84              | 08/30/84                 | 12/20/84    | 126,000   | 102,700   |
| 5710-TR-100   | Stockbridge & Sherwood Telephone Co. | 07/20/84              | 08/30/84                 | 12/20/84    | 90,000    | 59,593    |
| 1970-TR-100   | Fennimore Telephone Co.              | 07/20/84              | 08/30/84                 | 12/20/84    | 28,000    | 4,112     |
| 1410-TR-3     | Crandon Telephone Co.                | 11/14/84              | 12/31/84                 | 04/30/85    | 72,400    | 68,300    |
| 6250-TR-100   | Waunakee Telephone Co.               | 01/15/85              | 02/12/85                 | 06/11/85    | 77,000    | 41,423    |

## Local Measured Service Proposals Rejected

During the biennium, the PSC denied Wisconsin Bell's and General Telephone's applications for multi-element Local Measured Service (LMS). LMS refers to the method of charging for local calls based on four elements: number of calls, duration, distance and time of day. A flat monthly rate for access to the network could also be included.

The commission rejected Bell's proposal in December 1983, saying Bell failed to prove that optional LMS would offer greater customer or telephone system benefits than flat rates or its current per call rate.

In May 1984, the commission rejected General Telephone's request to test LMS in eight of its 192 exchanges. The PSC denied the experiment because it would not have provided enough information about permanent implementation of LMS.

## New Extended Area Service Rules Set

The commission established new rules for reviewing requests for Extended Area Service (EAS), effective August 1, 1983. EAS allows telephone customers to call between exchanges without long-distance charges.

Since 1972, no new EAS arrangements have been approved by the commission because investigations uniformly showed that cost of service exceeded benefits. Rather than continue the arduous case-by-case consideration of EAS requests, which imposes costs, long delays and uncertainties on all parties involved, the commission decided to establish general criteria under which EAS requests would be reviewed.

The new rules require that before a public hearing can be held, a petition signed by a significant percentage of the customers in an exchange requesting EAS must be filed, a study of calling volume and costs must be conducted by the affected companies, and customers must be surveyed to determine their willingness to pay for the service.

These measures prevent costly investigation from continuing if customer interest and current toll us-

age show that EAS is unlikely to be found in the public interest.

## PSC Opposed FCC Subscriber Line Charge and Depreciation Rates

The Federal Communications Commission (FCC) authorized a \$1.00 monthly charge on residential customers' phone bills and a \$6.00 per month charge for most business customers, effective June 1985 and May 1984 respectively.

The FCC approved the charge in an effort to discourage major telephone customers from bypassing the local telephone company by installing their own lines to their long-distance carrier.

In 1984, the PSC tried to stop the subscriber line charge by challenging the authority of the FCC to approve the fee. In federal court the PSC, along with the National Association of Regulatory Utility Commissioners, argued that because payment of this charge is a precondition to obtaining local service, it is a local charge over which the FCC has no jurisdiction.

The FCC claims that this subscriber line charge brings the price of local service closer to the cost of providing it. In turn, local telephone companies will reduce the charge to long-distance carriers for connection between the nationwide network and the local network. The long-distance companies' savings will be passed along to the consumer in the form of lower long-distance rates.

The PSC has also opposed FCC-ordered methods of calculating depreciation which have resulted in increased depreciation expense for telephone companies. Cases are now pending in the United States Supreme Court. The FCC has tried to preempt state depreciation ratemaking, thereby raising local rates. The effect on Wisconsin ratepayers was \$9 million per year for Wisconsin Bell customers alone. The PSC has claimed that the FCC exceeded its jurisdiction in its preemption orders, and, although the PSC is currently enjoined to allow Wisconsin Bell to collect the money in rates, the collection is made subject to refund if the commission wins the case in the U.S. Supreme Court.

**WATER AND SEWER****PSC Issues Water and Sewer Rate Orders**

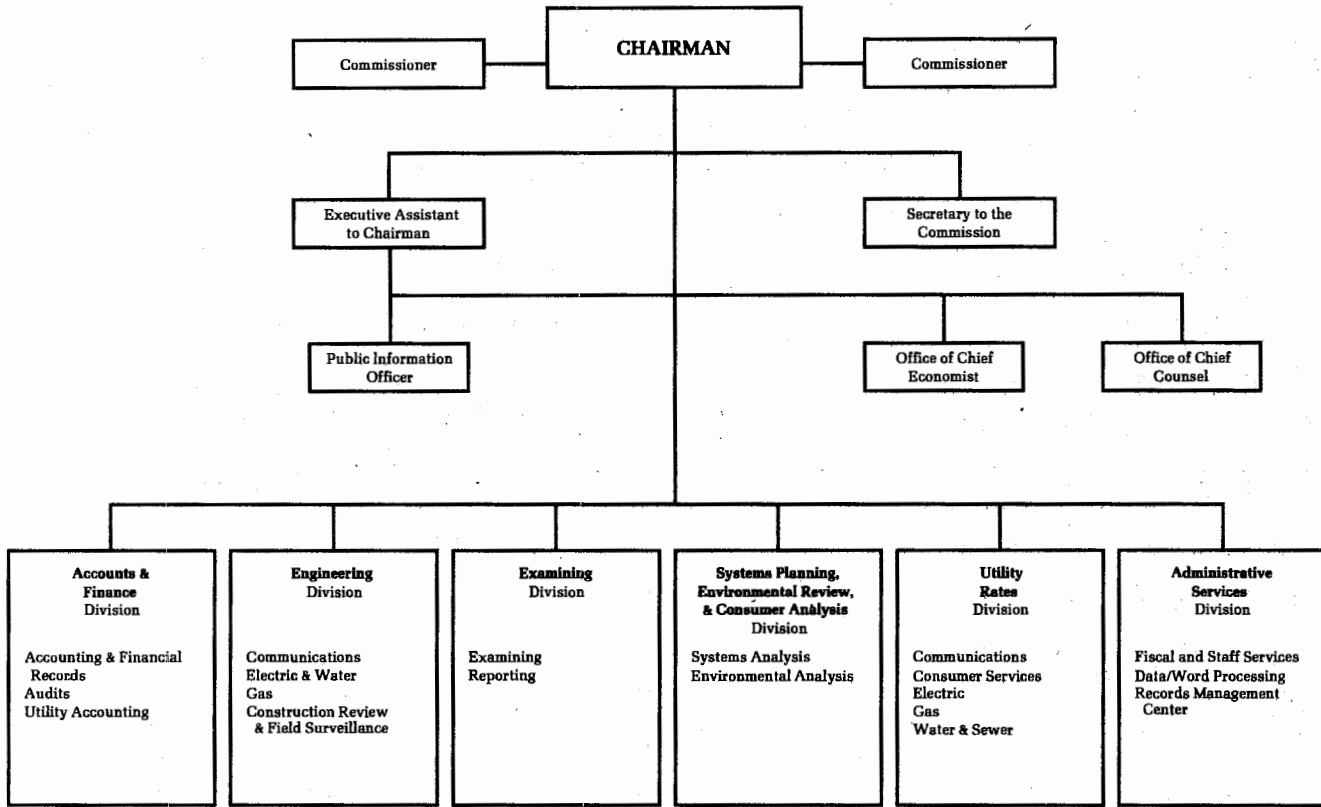
The commission issued 238 formal water and sewer rate orders during the biennium. There are 554 water and 92 sewer utilities under PSC regulation.

Commission staff worked more closely with the Department of Natural Resources (DNR) to eliminate overlap in sewer rate regulation. As a result, the DNR has now adopted the commission's rate design for sewage treatment plants funded by grants from the federal Environmental Protection Agency.

**Water Rate Cases****(Class A Utilities)**

| <b>Docket</b> | <b>Utility</b>                       | <b>Requested</b> | <b>Granted</b> | <b>Final Order</b> | <b>% Increase (Decrease)</b> |
|---------------|--------------------------------------|------------------|----------------|--------------------|------------------------------|
| 190-WR-4      | Appleton                             | \$ —             | \$ 369,720     | 10/27/83           | 12                           |
| 190-WR-100    | Appleton                             | —                | 80,073         | 02/21/85           | 3                            |
| 480-WR-3      | Cudahy                               | —                | 267,901        | 08/26/83           | 27                           |
| 740-WR-5      | Eau Claire                           | —                | 436,475        | 11/01/83           | 18                           |
| 2010-WR-1     | Fond du Lac                          | —                | 653,837        | 07/21/83           | 66                           |
| 2820-WR-4     | Kenosha                              | —                | 506,456        | 10/06/83           | 15                           |
| 2920-WR-3     | La Crosse                            | —                | 506,843        | 12/08/83           | 31                           |
| 3370-WR-4     | Marinette                            | —                | 67,382         | 11/01/84           | 8                            |
| 4480-WR-3     | Oshkosh                              | —                | 437,363        | 12/08/83           | 24                           |
| 4900-WR-5     | Racine                               | —                | 474,622        | 02/21/85           | 10                           |
| 5370-WR-2     | Sheboygan                            | —                | 578,362        | 02/21/84           | 43                           |
| 5820-UR-12    | Superior Water,<br>Light & Power Co. | 244,329          | 108,872        | 12/20/84           | 5                            |
| 6300-WR-3     | Wausau                               | —                | 44,894         | 02/21/84           | 3                            |
| 6320-WR-100   | Wauwatosa                            | 249,182          | 249,182        | 03/14/85           | 9                            |
| 6360-WR-2     | West Allis                           | —                | 174,546        | 12/11/84           | 6                            |
| 6680-UR-13    | Wis. Power &<br>Light Co.            | 255,000          | 272,000        | 08/30/83           | 9                            |
| 6680-UR-14    | Wis. Power &<br>Light Co.            | —                | 265,000        | 10/09/84           | 8                            |

# COMMISSION ORGANIZATION



## **COMMISSION ORGANIZATION** Continued

### **COMMISSIONERS**

Ness Flores, Chairman  
Branko Terzic, Commissioner  
Mary Lou Munts, Commissioner

### **COMMISSION OFFICE**

George Edgar, Executive Assistant, 267-7898  
Jacqueline K. Reynolds, Secretary to the Commission, 266-8097  
Gail Gawenda, Public Information Officer, 266-9600

#### **OFFICE OF CHIEF COUNSEL**

Steven Schur, Chief Counsel, 266-1264

#### **EXAMINING DIVISION**

Clarence Sorensen, Administrator, 266-5473

#### **OFFICE OF CHIEF ECONOMIST**

Robert Malko, Chief Economist, 266-0699

#### **ADMINISTRATIVE SERVICES DIVISION**

Carla Wright, Administrator, 266-3587  
Gordon Grant, Fiscal & Staff Services, 267-9086  
Barbara Bartz, Information Systems, 266-3957  
Lynn Murawski, Personnel Director, 266-9315

#### **SYSTEMS PLANNING, ENVIRONMENTAL REVIEW AND CONSUMER ANALYSIS DIVISION**

Jerry Mendl, Administrator, 267-3588  
David Schoengold, Systems Analysis, 267-3589  
Anita Sprenger, Environmental Analysis, 267-3590

#### **UTILITY RATES DIVISION**

Victor Mayer, Administrator, 266-3182  
Terry Nicolai, Electric, 266-5620  
Thor Soderholm, Water & Sewer, 266-1422  
Gary Evenson, Communications, 266-6744  
Harold Meyer, Gas, 266-8128  
Al Guyant, Consumer Services, 267-9813

#### **ACCOUNTS AND FINANCE DIVISION**

Conrad Oleson, Administrator, 267-7829  
Norman Young, Accounts, 267-7866  
Cheryl Pofahl, Audits, 267-7972  
Frederick Halverson, Reports, 267-9099

#### **ENGINEERING DIVISION**

Scot Cullen, Administrator, 266-1567  
Kore Spellnes, Communications, 266-8006  
Lanny Smith, Electric and Water, 266-3165  
David O'Connell, Construction Review & Field  
Surveillance, 266-9640  
William Slagg, Gas, 266-7006

## Division Descriptions

The **Accounts and Finance Division** is responsible for auditing the accounting practices and financial records of public utilities and analyzing their proposed security offerings. It prepares depreciation studies and analyses of cost of capital and rate of return to present as testimony at hearings before the commission. The division compiles and publishes statistical studies of financial and operating data concerning public utilities.

The **Utility Rates Division** develops, analyzes and monitors utility rates and regulations, maintains utility tariffs and mediates consumer disputes with utilities. The division participates in formal case proceedings on rate issues, service regulations, certificates of public convenience and necessity, service withdrawals, service area disputes, conservation programs and rulemaking. The division also monitors Federal Energy Regulatory Commission (FERC) and Federal Communications Commission (FCC) actions and provides comments for commission intervention. Staff conduct independent investigations and data collection, analyses of proposals, and analyses of alternative cost studies and rate designs. The division enforces utility compliance in filing rates, charges, rules and regulations with the commission and ensures that tariff language is clear and unambiguous. The division interprets tariffs, rules, regulations and commission policies to respond to inquiries and to mediate and resolve consumer complaints.

The **Engineering Division** reviews and analyzes proposed utility construction projects from the standpoint of need, possible alternative actions and economics. The division promulgates and enforces service and safety standards, monitors conditions and activities potentially affecting service adequacy, monitors construction costs of major projects and plant accounting, and otherwise keeps the commission informed of utility operations.

The **Systems Planning, Environmental Review and Consumer Analysis (SPERCA) Division** is responsible for evaluating the environmental impact of prospective commission actions and developing and analyzing long-range electric utility plans in accordance with the statutory requirements. SPERCA staff members prepare environmental assessments and environmental impact statements in close coordination with other state agencies for

cases involving utility construction, rate increases and service rules. They subsequently review the case record, prepare and issue memoranda and develop recommendations for commission action.

The **Examining Division** schedules and conducts public hearings, records verbatim testimony, prepares transcripts and may issue proposed decisions. The record made before the hearing examiners employed by the commission contains all of the evidentiary information that may be used by the commission in making a decision in a contested proceeding. The records are also sent to court when a commission order is appealed.

The **Administrative Services Division** provides the commission's personnel and business management services, including budget development and control, revenue collection, employee training and development, compensation and benefit programs, and the coordination of the commission's Affirmative Action/Equal Employment Opportunity programs. This division also maintains a central records management system, coordinates the management of data and word processing resources, and provides special library services.

The **Office of Chief Counsel** represents and defends the actions of the commission in state and federal courts, provides legal advice to commissioners and staff, provides legal counsel for staff at commission hearings and coordinates federal intervention by Washington counsel or directly intervenes to represent the commission in cases of regulatory interest at the federal level. The Office of Chief Counsel also coordinates referrals from the commission to the Attorney General.

The **Office of Chief Economist** conducts economic research in the area of public utility regulation, develops and presents expert testimony at rate and rulemaking proceedings, and provides consultation to the commission staff on economic and financial issues and other activities relating to public utility regulation.

## Intervenor Compensation Expanded

Through a broader interpretation of the intervenor financing law, public participation in commission hearings has increased. Several intervenor groups, including Badger Safe Energy Alliance, Wis-

**COMMISSION ORGANIZATION** Continued

consin's Environmental Decade, Citizens' Utility Board and Center for Public Representation have requested and received intervenor compensation to enable them to participate more fully in a variety of cases such as electric rates, construction, generic electric issues and telephone rates.

During the 1983-85 biennium, 14 requests for intervenor financing totaling \$287,904 were made to the State Budget Office. The PSC approved \$262,754. In fiscal year 1983-84, intervenor groups made seven requests for compensation totaling \$50,724. The commission granted 73% of the funds, or \$37,054. Of the seven remaining requests, made during fiscal year 1984-85 in the amount of \$237,180, the PSC was able to approve 95% of the money desired, or \$225,700.

## Affirmative Action Report

Since 1978, each state agency has been required to form an Affirmative Action Advisory Council. The PSC council's responsibilities have been to assist in the identification of affirmative action problem areas, to audit hiring and promotional activities, and to inform employees of the affirmative action laws and complaint procedures.

In 1984, as part of its affirmative action program, the PSC, along with the Department of Health & Social Services and the Department of Employment Relations, made personnel recruitment presentations to Hispanic community-based organizations in Milwaukee. The presentations encouraged women, minorities and disabled persons to apply for state jobs, informing them of the state's employment and application processes.

The PSC's Upward Mobility Committee also falls under the affirmative action umbrella. During the biennium, the committee sponsored various training seminars for PSC employees, including one on interpersonal communications.

Both the Affirmative Action Advisory Council and the Upward Mobility Committee meet monthly and are actively involved in the commission's personnel matters.

## Alternative Employee Work Patterns

Flexible scheduling is another aspect of the commission's Affirmative Action program. An Alternative Work Pattern (AWP) policy is in the developmental stage at the present time. A questionnaire addressing alternative work patterns was sent to all employees in May 1985 requesting their input on the subject. The forthcoming AWP policy will replace a similar abbreviated policy issued in 1978.

Alternative work patterns are available to all employees. Approximately 35% of the PSC's 170 employees regularly or intermittently exercise one or more of the AWP options: four employees work compressed (four-day) work weeks, twelve employees work nonstandard work weeks (44 and 36 hours), and 14 employees work less than full time, including eight in job-sharing situations. The majority of participants use the flextime option (amended starting and quitting times). Both clerical and professional staff members participate in the alternative work patterns program. The PSC's experience continues to be positive in its use of alternative scheduling.

## Budget Report

| Source of Funds                | 1983-84<br>Budget: | Authorized<br>Positions | 1984-85<br>Budget: | Authorized<br>Positions |
|--------------------------------|--------------------|-------------------------|--------------------|-------------------------|
| Program Revenue (PRO)          | \$5,941,800        | 157.5                   | \$6,456,900        | 158.5                   |
| Program Revenue—Federal (PR-F) | 87,900             | 1.0                     | 102,400            | 1.0                     |
| General Purpose Revenue (GPR)  | -0-                | -0-                     | -0-                | -0-                     |
|                                | <u>\$6,029,700</u> | <u>158.5</u>            | <u>\$6,559,300</u> | <u>159.5</u>            |



## **PSC Publications Available:**

"Your Bill of Rights as a Residential Gas and Electric Utility Customer"

"Your Rights as a Telephone Customer"

"Guide to Public Hearings"

"Typical Steps in Major Rate Cases"

"PSC at a Glance . . ."

"Advance Plans: 20-Year Electric Utility Energy, Generation and Conservation Forecasts"

## GLOSSARY

- Access Line**—A cable that continuously connects a telephone customer to a switching center or common carrier operating center.
- Acid Rain**—Precipitation, contaminated by sulfur dioxide and nitrogen oxides from industrial emissions, that has been blamed for causing damage to forests and lakes.
- Advance Plan**—The utility report that must be filed with the Public Service Commission every two years. It gives 20-year forecasts of energy demand and describes alternate methods to meet that demand.
- British Thermal Unit (Btu)**—The amount of heat required to raise the temperature of one pound of water one degree Fahrenheit under certain pressure and temperature conditions.
- Bypass**—In the telecommunications industry, defined by the FCC as the use of alternative facilities to avoid usage-based access charges. For example, large companies that make many long-distance calls may hope to save money on their long-distance phone bills by installing their own lines to the long-distance carrier, bypassing local switches and eliminating the local company's access charge to the long-distance carrier.
- Capital Structure**—A business organization's total of common stock equity, preferred stock, long-term and short-term debt.
- Decommissioning**—The process of taking nuclear power plants out of service.
- Depreciation**—An annual expense entered on the books for replacing plant and equipment that are worn out or obsolete.
- Diversification**—A business venture apart from traditional utility functions.
- Equity**—The ownership interest preferred and common stockholders have in a company.
- Exchange**—An area established by the telephone company for administration of service, usually a city or town and its surrounding communities.
- Extended Area Service (EAS)**—An arrangement that allows customers to call between exchanges without toll charges, but at higher local rates.
- Federal Communications Commission (FCC)**—A five-member board that regulates interstate communications businesses, including television, radio and long distance telephone companies.
- Federal Energy Regulatory Commission (FERC)**—A five-member board that sets and enforces wholesale electric rates and prescribes standards for state regulation of gas and electric utilities.
- Fuel Adjustment Clause**—A provision that allows a utility to adjust its rates, to reflect changes in fuel costs, without an order of the Public Service Commission.
- Holding Company**—A business organization that controls another business organization through ownership of its common stock, common management personnel or other agreements.
- Intervenor**—An individual or organization, other than PSC staff and utility representatives, participating in commission hearings.
- Local Access and Transport Area (LATA)**—Following the divestiture of the Bell operating companies from AT&T, the geographic area within which Wisconsin Bell carries long-distance calls. Wisconsin is divided into four LATAs.
- Local Measured Service (LMS)**—A method of charging for local telephone calls based on four elements: time-of-day, distance, duration of call, and number of calls.
- Modification of Final Judgment (MFJ)**—The consent decree, issued by the Federal Court, that ordered the breakup of AT&T.
- National Association of Regulatory Utility Commissioners (NARUC)**—A nationwide organization that intervenes in utility issues on the federal level. The Wisconsin PSC is a member.
- Other Common Carrier**—A long-distance telephone company, other than AT&T, having its own transmission and switching equipment.
- Regulatory Strategic Planning**—A process by which utility commissions can develop a forward-looking and integrative approach to addressing utility issues.
- Reseller**—A company that buys long-distance telephone time from existing telephone utilities for resale to consumers.

**Sulfur Dioxide (SO<sub>2</sub>)**—One of the components of acid rain, commonly found in the emissions of coal-burning power plants.

**Take or Pay**—A provision found in energy sales contracts that requires payment for a certain amount of fuel whether it is needed or not.

**Tariff**—A utility's schedule of rates and rules.

**Toll**—A charge for making a telephone call that terminates beyond the boundaries of an exchange or its extended area service points.

**Weatherization**—The process of making buildings more energy efficient by installing insulation, modifying furnaces, etc.

## APPENDIX A

### Rate Actions

During the past biennium, the PSC issued 350 rate orders for electric, natural gas, telephone, water and combined water and sewer utilities. The following pages indicate the outcome of each proceeding.

In reading this appendix, it may be helpful to keep these points in mind:

- The commission authorized a number of water and combined water and sewer utilities to increase their annual revenue by large percentages. Some of these increases were the result of federal Environmental Protection Agency regulations that required these utilities to install costly treatment facilities. Other small utilities may have waited many years before filing a rate request and then needed a large revenue increase to catch up with higher operating costs and remain financially sound.
- Where there is no amount requested, it is often because a small utility didn't have the staff necessary to calculate a reasonable revenue request. Therefore, commission staff determined the appropriate amount.
- Several of the telephone utility rate cases docketed 0005TR3 show zeros in the "Granted," "Request" and "Percent" columns. These com-

panies were not authorized to pass the rate increase on to customers because the commission determined that the utility's rate of return was already at an appropriate level.

- Zeros in the "Granted," "Request" and "Percent" columns of non-telephone utility rate cases indicate that the utility is new and its rates have been established for the first time.

#### Key

**NUMB**—The utility's code number, used by the PSC in record keeping.

**NAME**—The name of the utility.

**DOCKET**—The letter and number code used by the PSC to refer to a particular case.

**GRANTED**—The annual revenue increase, in dollars, granted the utility by the PSC.

**REQUEST**—The annual revenue increase, in dollars, requested by the utility.

**OPREV**—The utility's annual operating revenue, in dollars, before the rate case.

**PERCENT**—The percent increase or decrease in the utility's annual revenue as a result of the rate case.

| NUMB | NUMB | NAME                                 | DOCKET     | GRANTED  | REQUEST  | OPREV     | PERCENT |
|------|------|--------------------------------------|------------|----------|----------|-----------|---------|
| 0020 | 0020 | ADAMS MUNICIPAL WATER AND SEWER UTIL | 0020UR2    | 42720    | 0        | 90370     | 47.272  |
| 0020 | 0020 | ADAMS MUNICIPAL WATER AND SEWER UTIL | 0020UR2    | 39431    | 0        | 103560    | 38.076  |
| 0060 | 0060 | ALLENTON SANITARY DISTRICT NO 1      | 0060WR2    | 17794    | 0        | 28460     | 62.523  |
| 0120 | 0120 | ALTOONA MUN WATER AND SEWER UTILITY  | 0120WR4    | 17653    | 0        | 158066    | 11.168  |
| 0140 | 0140 | AMERY MUN WATER AND SEWER UTILITY    | 0140UR100  | 23180    | 0        | 93122     | 24.892  |
| 0140 | 0140 | AMERY MUN WATER AND SEWER UTILITY    | 0140UR100  | 13778    | 0        | 124631    | 11.055  |
| 0150 | 0150 | AMERY TELEPHONE COMPANY              | 0005TR3    | 52163    | 0        | 505000    | 10.329  |
| 0170 | 0170 | AMHERST TELEPHONE COMPANY            | 0005TR3    | 0        | 0        | 1559000   | 0.000   |
| 0190 | 0190 | APPLETON MUNICIPAL WATER UTILITY     | 0190WR100  | 80073    | 0        | 3168362   | 2.527   |
| 0190 | 0190 | APPLETON MUNICIPAL WATER UTILITY     | 0190WR4    | 369720   | 0        | 2993928   | 12.349  |
| 0200 | 0200 | APPLEWOOD HILL WATER UTILITY INC     | 0200WR2    | 2353     | 0        | 5230      | 44.990  |
| 0210 | 0210 | ARCADIA MUN LIGHT AND WATER UTILITY  | 0210ER4    | 17624    | 0        | 1247798   | 1.412   |
| 0210 | 0210 | ARCADIA MUN LIGHT AND WATER UTILITY  | 0210WR100  | 97476    | 0        | 125637    | 77.585  |
| 0220 | 0220 | ARENA MUNICIPAL WATER UTILITY        | 0220WR3    | 7325     | 0        | 16686     | 43.899  |
| 0230 | 0230 | ARGYLE MUN WATER AND ELECTRIC UTIL   | 0230WR100  | 50102    | 0        | 24320     | 206.012 |
| 0265 | 0265 | AT&T COMMUNICATIONS OF WISCONSIN     | 0265TR100  | 608000   | 0        | 174456000 | 0.349   |
| 0265 | 0265 | AT&T COMMUNICATIONS OF WISCONSIN     | 6720TR36   | 19988000 | 21315000 | 153000000 | 13.064  |
| 0270 | 0270 | AUGUSTA MUN WATER AND SEWER UTILITY  | 0270UR100  | 28872    | 0        | 90602     | 31.867  |
| 0270 | 0270 | AUGUSTA MUN WATER AND SEWER UTILITY  | 0270UR100  | 57575    | 0        | 50330     | 114.395 |
| 0330 | 0330 | BALDWIN TELECOM, INC.                | 0005TR3    | 29884    | 0        | 958000    | 3.130   |
| 0350 | 0350 | BANGOR MUNICIPAL UTILITY             | 0350ER100  | 43834    | 0        | 1300313   | 3.371   |
| 0350 | 0350 | BANGOR MUNICIPAL UTILITY             | 0350WR100  | 12353    | 12353    | 59860     | 20.636  |
| 0380 | 0380 | BARRON LIGHT AND WATER DEPARTMENT    | 0380ER2    | -35134   | 0        | 1380987   | -2.544  |
| 0390 | 0390 | BAYLAND TELEPHONE INC                | 0005TR3    | 13492    | 0        | 428000    | 3.152   |
| 0410 | 0410 | BELGIUM MUNICIPAL WATER UTILITY      | 0410WR1    | 31184    | 0        | 46079     | 67.675  |
| 0420 | 0420 | BELLEVILLE WATER UTILITY             | 0420WR100  | 30385    | 0        | 51375     | 59.144  |
| 0470 | 0470 | BERGEN TELEPHONE COMPANY             | 0005TR3    | 1863     | 0        | 65073     | 2.863   |
| 0540 | 0540 | BLACK EARTH TELEPHONE COMPANY        | 0540TR1    | 11956    | 30670    | 370300    | 3.229   |
| 0590 | 0590 | BLOOMER TELEPHONE COMPANY            | 0005TR3    | 29863    | 0        | 663000    | 4.504   |
| 0600 | 0600 | BLOOMING GROVE SANITARY DIST NO 8    | 0600WR1    | 9310     | 0        | 6844      | 136.032 |
| 0640 | 0640 | BONDUEL TELEPHONE COMPANY            | 0640TR4    | 81600    | 80300    | 465100    | 17.545  |
| 0650 | 0650 | BOSCOBEL MUNICIPAL UTILITIES         | 0650ER5    | 119891   | 0        | 1241110   | 9.660   |
| 0690 | 0690 | BOYD MUN WATER AND SEWER UTILITY     | 0690SR100  | 24298    | 24298    | 35434     | 68.573  |
| 0710 | 0710 | BRILLIANT MUNICIPAL WATER UTILITY    | 0710WR100  | 29718    | 0        | 140868    | 21.096  |
| 0750 | 0750 | BROKAW MUNICIPAL WATER UTILITY       | PWAC070183 | 54240    | 0        | 155444    | 34.894  |
| 0750 | 0750 | BROKAW MUNICIPAL WATER UTILITY       | 0750WR100  | 40113    | 0        | 187943    | 21.343  |
| 0765 | 0765 | BROOKFIELD, TOWN OF, SANITARY DIST.  | 0765WR2    | 2378     | 0        | 9555      | 24.887  |
| 0790 | 0790 | BROWNSVILLE MUNICIPAL WATER UTILITY  | 0790WR2    | 5922     | 0        | 24500     | 24.171  |
| 0820 | 0820 | BRUCE TELEPHONE COMPANY, INC         | 0005TR3    | 15052    | 0        | 768000    | 1.960   |
| 0850 | 0850 | BURLINGTON BRIGHTON & WHEATLAND TEL  | 0850TR2    | 3799     | 20000    | 922300    | 0.412   |
| 0860 | 0860 | BUTLER MUNICIPAL WATER UTILITY       | 0860WR100  | 59850    | 0        | 122187    | 48.982  |
| 0940 | 0940 | CAMPBELLSPORT MUN WATER UTILITY      | 0940WR1    | 16008    | 0        | 71048     | 22.531  |
| 0960 | 0960 | CASCO TELEPHONE COMPANY              | 0005TR3    | 11628    | 0        | 354000    | 3.285   |
| 1015 | 1015 | CENCOM OF WISCONSIN, INC.            | 0005TR3    | 232332   | 0        | 8341668   | 2.785   |
| 1050 | 1050 | CENTURIA MUN WATER AND SEWER UTILITY | 1050UR3    | 7103     | 0        | 30374     | 23.385  |
| 1140 | 1140 | CITY GAS COMPANY OF ANTIGO           | 1140GR10   | 63780    | 190117   | 4003777   | 1.593   |
| 1140 | 1140 | CITY GAS COMPANY OF ANTIGO           | 1140GR9    | 150022   | 175055   | 4109802   | 3.650   |
| 1150 | 1150 | CLAYTON MUNICIPAL WATER UTILITY      | 1150WR2    | 8937     | 0        | 17458     | 51.191  |
| 1170 | 1170 | CLEAR LAKE TELEPHONE COMPANY, INC    | 0005TR3    | 12862    | 0        | 409000    | 3.145   |
| 1190 | 1190 | CLINTON MUNICIPAL WATER UTILITY      | 1190WR100  | 13096    | 0        | 83000     | 15.778  |
| 1250 | 1250 | COLBY MUNICIPAL WATER UTILITY        | 1250WR1    | 57370    | 0        | 49665     | 115.514 |
| 1310 | 1310 | COMBINED LOCKS WATER UTILITY         | PWAC080483 | 41996    | 0        | 129306    | 32.478  |
| 1310 | 1310 | COMBINED LOCKS WATER UTILITY         | 1310WR100  | 23210    | 0        | 117676    | 19.724  |
| 1350 | 1350 | COON VALLEY FARMERS TELEPHONE CO     | 0005TR3    | 21066    | 0        | 367000    | 5.740   |

| NUMB | NUMB | NAME                                 | DOCKET     | GRANTED  | REQUEST  | OPREV     | PERCENT |
|------|------|--------------------------------------|------------|----------|----------|-----------|---------|
| 1400 | 1400 | CRANDON MUN WATER AND SEWER UTILITY  | 1400UR100  | 33529    | 0        | 56535     | 59.307  |
| 1400 | 1400 | CRANDON MUN WATER AND SEWER UTILITY  | 1400UR100  | 21677    | 0        | 56535     | 38.343  |
| 1410 | 1410 | CRANDON TELEPHONE COMPANY            | 0005TR3    | 22494    | 0        | 831000    | 2.707   |
| 1410 | 1410 | CRANDON TELEPHONE COMPANY            | 1410TR3    | 68300    | 72400    | 1017800   | 6.711   |
| 1410 | 1410 | CRANDON TELEPHONE COMPANY            | 1410TR3    | 56483    | 75859    | 773439    | 7.303   |
| 1480 | 1480 | CUDAHY MUNICIPAL WATER UTILITY       | 1480WR3    | 267901   | 0        | 995250    | 26.918  |
| 1510 | 1510 | DAHLBERG LIGHT AND POWER COMPANY     | 1510ER6    | 316343   | 0        | 3686312   | 8.582   |
| 1545 | 1545 | DARBOY SANITARY DISTRICT             | 1545WR1    | 0        | 0        | 0         | 0       |
| 1560 | 1560 | DARLINGTON MUN WATER AND SEWER UTIL  | 1560SR1    | 112098   | 0        | 81050     | 138.307 |
| 1570 | 1570 | DEERFIELD MUN WATER UTILITY          | 1570WR3    | 28039    | 0        | 84040     | 33.364  |
| 1580 | 1580 | DEFORST MUNICIPAL WATER UTILITY      | 1580WR100  | 45603    | 45603    | 113708    | 40.105  |
| 1600 | 1600 | DENMARK MUNICIPAL WATER UTILITY      | 1600WR2    | 45713    | 0        | 88343     | 51.745  |
| 1670 | 1670 | DOUSMAN, VILLAGE OF, WATER UTILITY   | 1670WR100  | 28062    | 0        | 26024     | 42.503  |
| 1675 | 1675 | DOWNSVILLE SANITARY DISTRICT         | 1675WR2    | 8037     | 0        | 12483     | 64.384  |
| 1690 | 1690 | DURAND MUNICIPAL WATER UTILITY       | 1690WR2    | 66728    | 0        | 81751     | 81.623  |
| 1710 | 1710 | EAGLE RIVER LIGHT AND WATER DEPT     | 1710ER100  | 40064    | 0        | 1253380   | 3.196   |
| 1710 | 1710 | EAGLE RIVER LIGHT AND WATER DEPT     | 1710WR100  | 19453    | 0        | 84658     | 22.978  |
| 1730 | 1730 | EAST TROY MUN WATER UTI              | 1730WR100  | 20762    | 0        | 264325    | 7.855   |
| 1735 | 1735 | EAST TROY SANITARY DISTRICT #3       | 1735WR100  | 1416     | 0        | 5634      | 25.133  |
| 1740 | 1740 | EAU CLAIRE MUNICIPAL WATER DEPT      | 1740WR5    | 436475   | 0        | 2377800   | 18.356  |
| 1750 | 1750 | EDGAR MUNICIPAL WATER UTILITY        | 1750WR2    | 32328    | 0        | 83523     | 38.706  |
| 1780 | 1780 | ELEVA MUNICIPAL WATER UTILITY        | 1780WR100  | 12626    | 0        | 26123     | 48.333  |
| 1810 | 1810 | ELK MOUND WATER AND SEWER UTILITY    | 1810UR2    | 9333     | 0        | 40377     | 23.115  |
| 1820 | 1820 | ELK MOUND WATER AND SEWER UTILITY    | 1820WR2    | 44537    | 0        | 26177     | 170.138 |
| 1830 | 1830 | ELLSWORTH MUN WATER AND SEWER UTIL   | 1830WR2    | 49280    | 0        | 68189     | 72.270  |
| 1840 | 1840 | ELROY GAS INCORPORATED               | 1840GR8    | 7843     | 0        | 17879     | 43.867  |
| 1880 | 1880 | EVANSVILLE MUN WATER & ELECTRIC UTIL | 1880ER100  | 5107     | 35976    | 845698    | 6.037   |
| 1890 | 1890 | FAIRCHILD MUNICIPAL WATER UTILITY    | 1890WR100  | 95375    | 0        | 2081732   | 4.582   |
| 1900 | 1900 | FAIRWATER MUN WATER UTILITY          | 1900WR2    | 11344    | 0        | 14282     | 79.429  |
| 1930 | 1930 | FALL RIVER MUNICIPAL WATER UTILITY   | 1930WR3    | 15971    | 0        | 14530     | 109.917 |
| 1970 | 1970 | FENNIMORE TELEPHONE COMPANY          | 1970TR100  | 6272     | 0        | 26037     | 24.089  |
| 1980 | 1980 | FENNIMORE WATER AND LIGHT PLANT      | 1980ER3    | 4112     | 28000    | 619200    | 0.664   |
| 1980 | 1980 | FENNIMORE WATER AND LIGHT PLANT      | 1980WR1    | 33091    | 0        | 885913    | 3.735   |
| 1990 | 1990 | FITCHBURG, CITY OF, UTILITY DIST 1   | 1990WR4    | 69780    | 0        | 86200     | 80.951  |
| 2010 | 2010 | FOND DU LAC MUNICIPAL WATER UTILITY  | 2010WR1    | 112756   | 0        | 282492    | 39.915  |
| 2030 | 2030 | FOOTVILLE TELEPHONE COMPANY          | 0005TR3    | 653837   | 0        | 992669    | 65.867  |
| 2040 | 2040 | FOOTVILLE WATER AND ELECTRIC COMM    | 2040WR2    | 4943     | 0        | 352250    | 1.403   |
| 2070 | 2070 | FOUNTAIN CITY MUN WATER UTILITY      | 2070WR1    | 16317    | 0        | 13406     | 121.714 |
| 2130 | 2130 | FREDONIA MUNICIPAL WATER UTILITY     | 2130WR1    | 20000    | 0        | 569000    | 3.515   |
| 2140 | 2140 | FRIENDSHIP MUNICIPAL WATER UTILITY   | 2140WR1    | 18527    | 0        | 7775      | 238.289 |
| 2140 | 2140 | FRIENDSHIP MUNICIPAL WATER UTILITY   | 2140WR100  | 69825    | 0        | 45125     | 154.737 |
| 2160 | 2160 | GALESVILLE MUN WATER & SEWER UTILITY | 2160UR1    | 9116     | 0        | 40441     | 22.541  |
| 2160 | 2160 | GALESVILLE MUN WATER & SEWER UTILITY | 2160WR1    | 10638    | 10638    | 47954     | 22.184  |
| 2180 | 2180 | GENERAL TELEPHONE CO OF WI/W.BORNER  | 0005TR3    | 50248    | 0        | 21964     | 228.774 |
| 2180 | 2180 | GENERAL TELEPHONE CO OF WI/W.BORNER  | 2180TR17   | 3947000  | 0        | 64186     | 78.336  |
| 2200 | 2200 | GENDA CITY WATER UTILITY             | 2200WR1    | 12421000 | 26250000 | 219283000 | 1.800   |
| 2270 | 2270 | GLENWOOD CITY MUN WATER UTILITY      | 2270WR100  | 8521     | 0        | 208477000 | 5.958   |
| 2288 | 2288 | GOODMAN SANITARY DISTRICT #1         | 2288WR100  | 27346    | 0        | 44787     | 19.026  |
| 2300 | 2300 | GRAFTON MUN WATER AND SEWER UTILITY  | 2300SR1    | 33988    | 0        | 33990     | 80.453  |
| 2330 | 2330 | GRANTSBURG MUNICIPAL WATER UTILITY   | 312129     | 312129   | 0        | 16819     | 202.081 |
| 2360 | 2360 | GREENDALE WATER AND SEWER UTILITY    | MCA2060184 | 23601    | 0        | 380471    | 82.038  |
| 2360 | 2360 | GREENDALE WATER AND SEWER UTILITY    | 2360UR2    | -21695   | 0        | 73973     | 31.905  |
| 2360 | 2360 | GREENDALE WATER AND SEWER UTILITY    | 2360UR2    | 71634    | 0        | 531629    | -4.081  |
|      |      |                                      |            |          |          | 521400    | 13.739  |

| NUMB | NUMB | NAME                                 | DOCKET     | GRANTED | REQUEST  | OPREV     | PERCENT |
|------|------|--------------------------------------|------------|---------|----------|-----------|---------|
| 2360 | 2360 | GREENDALE WATER AND SEWER UTILITY    | 2360UR2    | 45737   | 0        | 636000    | 7.191   |
| 2380 | 2380 | GREENWOOD MUNICIPAL WATER UTILITY    | 2380WR2    | 28966   | 0        | 58157     | 49.807  |
| 2390 | 2390 | GREENWOOD TELEPHONE COMPANY          | 2390TR100  | 61600   | 62000    | 463500    | 13.290  |
| 2420 | 2420 | HAGER CITY TELEPHONE COMPANY         | 0005TR3    | 18065   | 0        | 616000    | 2.933   |
| 2460 | 2460 | HARMONY GROVE SANITARY DISTRICT      | 2460WR1    | 6551    | 0        | 15891     | 41.225  |
| 2470 | 2470 | HARTFORD MUN WATER AND ELECTRIC      | 2470ER4    | 125430  | 0        | 3426277   | 3.661   |
| 2480 | 2480 | HARTLAND MUNICIPAL WATER UTILITY     | 2480WR1    | 120857  | 0        | 229187    | 52.733  |
| 2490 | 2490 | HAWKINS MUN WATER AND SEWER UTILITY  | 2490SR1    | 29605   | 0        | 37368     | 79.226  |
| 2510 | 2510 | HAZEL GREEN MUNICIPAL UTILITIES      | 2510WR2    | 23070   | 0        | 63774     | 36.175  |
| 2520 | 2520 | HEADWATERS TELEPHONE COMPANY         | 0005TR3    | 40668   | 0        | 2187000   | 1.860   |
| 2550 | 2550 | HILLSBORO MUNICIPAL WATER UTILITY    | 2550WR100  | 37520   | 0        | 74816     | 50.150  |
| 2560 | 2560 | HILLSBORO TELEPHONE COMPANY INC      | 0005TR3    | 16577   | 0        | 506000    | 3.276   |
| 2570 | 2570 | HIXTON MUNICIPAL WATER UTILITY       | 2570WR1    | 9941    | 0        | 12564     | 79.123  |
| 2600 | 2600 | HORIZON MUNICIPAL WATER UTILITY      | 2600WR3    | 62216   | 0        | 157110    | 39.600  |
| 2610 | 2610 | HORTONVILLE MUN WATER & SEWER UTIL   | 2610UR4    | 32555   | 0        | 331345    | 9.825   |
| 2610 | 2610 | HORTONVILLE MUN WATER & SEWER UTIL   | 2610UR4    | 26940   | 0        | 62325     | 43.225  |
| 2650 | 2650 | HUSTISFORD MUNICIPAL UTILITIES       | 2650ER5    | 30894   | 0        | 685974    | 4.504   |
| 2650 | 2650 | HUSTISFORD MUNICIPAL UTILITIES       | 2650SR100  | 22965   | 0        | 93010     | 24.691  |
| 2650 | 2650 | HUSTISFORD MUNICIPAL UTILITIES       | 2650WR1    | 14208   | 0        | 62026     | 22.907  |
| 2670 | 2670 | IOLA MUNICIPAL WATER UTILITY         | 2670WR100  | 10126   | 0        | 43650     | 23.198  |
| 2690 | 2690 | IRON RIDGE MUNICIPAL WATER UTILITY   | 2690WR2    | 39798   | 0        | 34637     | 114.900 |
| 2700 | 2700 | IRON RIVER SANITARY DISTRICT NO 1    | 2700WR1    | 8091    | 0        | 15993     | 50.591  |
| 2770 | 2770 | JOHNSON CREEK MUN WATER AND SEWER    | 2770WR1    | 19543   | 0        | 54064     | 36.148  |
| 2790 | 2790 | JUNEAU UTILITY COMMISSION            | 2790WR7    | 27232   | 0        | 102152    | 26.658  |
| 2800 | 2800 | KAUKAUNA MUN WATER & ELECTRIC UTIL   | 2800ER4    | -18377  | 0        | 18677247  | -0.098  |
| 2820 | 2820 | KENOSHA MUNICIPAL WATER DEPARTMENT   | 2820WR4    | 506456  | 0        | 3479924   | 14.554  |
| 2850 | 2850 | KIEL MUNICIPAL UTILITIES             | 2850SR1    | 491482  | 0        | 396736    | 123.881 |
| 2870 | 2870 | KIMBERLY MUNICIPAL WATER UTILITY     | 2870WR3    | 61482   | 0        | 279371    | 22.007  |
| 2890 | 2890 | KOHLER MUNICIPAL WATER UTILITY       | PWACO70184 | 13112   | 0        | 75851     | 17.287  |
| 2900 | 2900 | KRONENWEITER, TN. OF, SAN DIST 1     | 2900WR1    | 6506    | 0        | 46667     | 13.941  |
| 2920 | 2920 | LA CROSSE MUNICIPAL WATER UTILITY    | 2920WR3    | 506843  | 0        | 1631575   | 31.065  |
| 2940 | 2940 | LADYSMITH MUNICIPAL WATER UTILITY    | 2940WR2    | 63922   | 0        | 196743    | 32.490  |
| 2960 | 2960 | LA FARGE MUN WATER AND SEWER UTILITY | 2960SR1    | 105145  | 0        | 16392     | 641.441 |
| 2970 | 2970 | LAKEFIELD TELEPHONE COMPANY          | 0005TR3    | 14242   | 0        | 491000    | 2.901   |
| 2980 | 2980 | LAKE GENEVA MUNICIPAL WATER UTILITY  | 2980WR3    | 120456  | 0        | 458125    | 26.293  |
| 2985 | 2985 | LAKELAND SANITARY DISTRICT #1        | 2985WR3    | 21503   | 0        | 113602    | 18.928  |
| 3000 | 3000 | LAKE MILLS LIGHT AND WATER DEPT      | 3000WR4    | 35803   | 0        | 202877    | 17.648  |
| 3010 | 3010 | LAKESHORE TELEPHONE COMPANY          | 0005TR3    | 16141   | 0        | 525000    | 3.074   |
| 3010 | 3010 | LAKESHORE TELEPHONE COMPANY          | 3010TR2    | 5327    | 0        | 504656    | 1.056   |
| 3020 | 3020 | LAKE SUPERIOR DISTRICT POWER COMPANY | 3020GR17   | 557700  | 607800   | 11433304  | 4.878   |
| 3070 | 3070 | LARSEN-READFIELD TELEPHONE COMPANY   | 0005TR3    | 22046   | 0        | 700000    | 3.149   |
| 3110 | 3110 | LEMONWEIR VALLEY TELEPHONE COMPANY   | 0005TR3    | 0       | 0        | 1176000   | 0.000   |
| 3125 | 3125 | LERON SANITARY DISTRICT NO. 1        | 3125WR2    | 14583   | 0        | 14206     | 102.654 |
| 3160 | 3160 | LODI MUN LIGHT AND WATER UTILITY     | 3160ER100  | 44772   | 0        | 748147    | 5.984   |
| 3190 | 3190 | LONE ROCK WATER UTILITY              | 3190WR1    | 18130   | 0        | 8910      | 203.479 |
| 3200 | 3200 | LOWELL MUN WATER AND SEWER UTILITY   | 3200UR3    | 4967    | 0        | 13158     | 37.749  |
| 3200 | 3200 | LOWELL MUN WATER AND SEWER UTILITY   | 3200UR3    | 5169    | 0        | 14401     | 35.893  |
| 3254 | 3254 | LYONS, TN. OF, SANITARY DISTRICT #1  | 3254WR100  | 0       | 0        | 17230     | 0.000   |
| 3260 | 3260 | MADLINE ISLAND TELEPHONE COMPANY     | 0005TR3    | 3449    | 0        | 93000     | 3.709   |
| 3270 | 3270 | MADISON GAS AND ELECTRIC COMPANY     | 3270UR12   | 3216000 | 10187000 | 119317000 | 2.695   |
| 3270 | 3270 | MADISON GAS AND ELECTRIC COMPANY     | 3270UR12   | -302000 | 3368000  | 101984000 | -0.296  |
| 3295 | 3295 | MAIDEN ROCK MUNICIPAL WATER UTILITY  | 3295WR1    | 0       | 0        | 30467     | 0.000   |
| 3310 | 3310 | MANAWA TELEPHONE COMPANY, INC        | 3310TR3    | 12547   | 30500    | 792070    | 1.584   |
| 3340 | 3340 | MAPLE BLUFF MUNICIPAL WATER UTILITY  | PWACO70183 | 4735    | 0        | 42134     | 11.238  |

| NUMB | NUMB | NAME                                 | DOCKET    | GRANTED | REQUEST | OPREV     | PERCENT |
|------|------|--------------------------------------|-----------|---------|---------|-----------|---------|
| 3340 | 3340 | MAPLE BLUFF MUNICIPAL WATER UTILITY  | 3340WR2   | 27525   | 0       | 56351     | 48.846  |
| 3345 | 3345 | MAPLEWOOD SANITARY DISTRICT NO. 1    | 3345WR1   | 0       | 0       | 31455     | 0.000   |
| 3370 | 3370 | MARINETTE MUNICIPAL WATER UTILITY    | 3370WR4   | 37528   | 0       | 810600    | 4.630   |
| 3370 | 3370 | MARINETTE MUNICIPAL WATER UTILITY    | 3370WR4   | 67382   | 0       | 877050    | 7.683   |
| 3380 | 3380 | MARION MUN WATER AND SEWER UTILITY   | 3380WR2   | 44120   | 0       | 63126     | 69.892  |
| 3380 | 3380 | MARION MUN WATER AND SEWER UTILITY   | 3380WR2   | 12886   | 0       | 33276     | 38.725  |
| 3410 | 3410 | MARSHALL MUN WATER AND SEWER UTILITY | 3410WR2   | 21053   | 0       | 160368    | 13.128  |
| 3410 | 3410 | MARSHALL MUN WATER AND SEWER UTILITY | 3410WR2   | 19046   | 0       | 46697     | 40.786  |
| 3430 | 3430 | MARY HILL PARK SANITARY DISTRICT     | 3430WR100 | 2154    | 0       | 5203      | 41.399  |
| 3440 | 3440 | MATTOON MUNICIPAL WATER UTILITY      | 3440WR2   | 17357   | 0       | 23419     | 74.115  |
| 3450 | 3450 | MAUSTON MUNICIPAL WATER UTILITY      | 3450WR100 | 47876   | 0       | 152380    | 31.419  |
| 3460 | 3460 | WAYVILLE MUNICIPAL WATER UTILITY     | 3460WR5   | 117616  | 0       | 331800    | 35.448  |
| 3530 | 3530 | MELLEN MUNICIPAL WATER               | 3530WR100 | 8614    | 0       | 42035     | 20.492  |
| 3580 | 3580 | MEMONIE FALLS MUN WATER UTILITY      | 3580WR2   | 195910  | 0       | 735516    | 26.636  |
| 3590 | 3590 | MEMONIE MUNICIPAL WATER UTILITY      | 3590WR5   | 66336   | 0       | 492447    | 13.471  |
| 3590 | 3590 | MEMONIE MUNICIPAL WATER UTILITY      | 3590WR6   | 23377   | 0       | 582127    | 4.016   |
| 3600 | 3600 | MERCER SANITARY DISTRICT NUMBER ONE  | 3600WR2   | 47423   | 0       | 26805     | 176.918 |
| 3620 | 3620 | MERRILLAN MUN WATER & ELECTRIC UTIL  | 3620WR100 | 19409   | 0       | 39357     | 49.315  |
| 3660 | 3660 | MIDWAY TELEPHONE COMPANY             | 0005TR3   | 237000  | 0       | 2726000   | 8.694   |
| 3680 | 3680 | MILLTOWN MUNICIPAL WATER UTILITY     | 3680WR2   | 13407   | 0       | 20736     | 64.656  |
| 3700 | 3700 | MILTON MUNICIPAL WATER UTILITY       | 3700WR5   | 92119   | 0       | 122740    | 75.052  |
| 3730 | 3730 | MINDORO SANITARY DISTRICT NUMBER ONE | 3730WR1   | 4144    | 0       | 10134     | 40.892  |
| 3770 | 3770 | MISHICOT MUNICIPAL WATER UTILITY     | 3770WR1   | 35461   | 0       | 59298     | 59.801  |
| 3790 | 3790 | MONDOVI TELEPHONE COMPANY            | 0005TR3   | 0       | 0       | 968000    | 0.000   |
| 3800 | 3800 | MONONA MUNICIPAL WATER UTILITY       | 3800WR100 | 81265   | 0       | 350834    | 23.163  |
| 3810 | 3810 | MONROE COUNTY TELEPHONE COMPANY      | 0005TR3   | 95000   | 0       | 4128000   | 2.301   |
| 3810 | 3810 | MONROE COUNTY TELEPHONE COMPANY      | 3810TR4   | 98372   | 0       | 4128628   | 2.383   |
| 3850 | 3850 | MONTICELLO MUNICIPAL WATER UTILITY   | 3850WR2   | 10936   | 0       | 46138     | 23.703  |
| 3880 | 3880 | MOSEL CENTERVILLE TELEPHONE COMPANY  | 3880TR3   | 33716   | 55500   | 1174092   | 2.872   |
| 3900 | 3900 | MOSINEE TELEPHONE COMPANY            | 0005TR3   | 0       | 0       | 1253000   | 0.000   |
| 3910 | 3910 | MOUNT CALVARY MUN WATER UTILITY      | 3910UR1   | 18421   | 0       | 33558     | 54.893  |
| 3910 | 3910 | MOUNT CALVARY MUN WATER UTILITY      | 3910UR1   | 17783   | 0       | 28840     | 61.661  |
| 3940 | 3940 | MOUNT HOREB TELEPHONE COMPANY        | 0005TR3   | 29597   | 0       | 1115000   | 2.654   |
| 3950 | 3950 | MOUNT HOREB WATER AND SEWER UTILITY  | 3950UR100 | 51763   | 0       | 202106    | 25.612  |
| 3950 | 3950 | MOUNT HOREB WATER AND SEWER UTILITY  | 3950UR100 | 114096  | 0       | 203780    | 55.990  |
| 3970 | 3970 | MOUNT VERNON TELEPHONE COMPANY       | 3970TR100 | 102700  | 126000  | 1943600   | 5.284   |
| 3980 | 3980 | MUKWONAGO MUNICIPAL WATER UTILITY    | 3980WR1   | 176994  | 0       | 121110    | 146.143 |
| 4000 | 4000 | MUSCODA LIGHT AND WATER DEPARTMENT   | 4000WR4   | 43849   | 0       | 58510     | 74.943  |
| 4020 | 4020 | NECEDAH MUNICIPAL WATER UTILITY      | 4020WR100 | 26836   | 0       | 60009     | 44.720  |
| 4060 | 4060 | NELSON WATER AND SEWER DEPARTMENT    | 4060WR2   | 9644    | 0       | 9907      | 97.345  |
| 4090 | 4090 | NEW BERLIN MUNICIPAL WATER UTILITY   | 4090WR4   | 301010  | 0       | 1297900   | 23.192  |
| 4100 | 4100 | NEW GLARUS MUN WATER & ELECTRIC UTIL | 4100ER3   | 33724   | 0       | 642121    | 5.252   |
| 4110 | 4110 | NEW HOLSTEIN PUBLIC UTILITIES        | 4110ER100 | 52332   | 0       | 3043000   | 1.720   |
| 4110 | 4110 | NEW HOLSTEIN PUBLIC UTILITIES        | 4110WR100 | 52987   | 52987   | 191900    | 27.612  |
| 4120 | 4120 | NEW LISBON MUN WATER & ELECTRIC UTIL | 4120WR2   | 41728   | 0       | 44967     | 92.797  |
| 4140 | 4140 | NEW RICHMOND MUNICIPAL WATER & SEWER | 4140SR2   | 277070  | 0       | 186357    | 148.677 |
| 4160 | 4160 | NIAGARA TELEPHONE COMPANY            | 0005TR3   | 33469   | 0       | 1206000   | 2.775   |
| 4220 | 4220 | NORTHERN STATES POWER COMPANY        | 4220UR4   | 5248000 | 7513000 | 175917000 | 2.983   |
| 4220 | 4220 | NORTHERN STATES POWER COMPANY        | 4220UR4   | 1733800 | 2003100 | 36660918  | 4.729   |
| 4230 | 4230 | NORTH FOND DU LAC MUN WATER UTILITY  | 4230WR2   | 27694   | 0       | 107795    | 25.691  |
| 4260 | 4260 | NORTH-WEST TELEPHONE COMPANY         | 4260TR9   | 1642000 | 2135000 | 23919250  | 6.865   |
| 4310 | 4310 | OAK CREEK MUNICIPAL WATER            | 4310UR3   | 346179  | 346179  | 1441300   | 24.019  |
| 4310 | 4310 | OAK CREEK MUNICIPAL WATER            | 4310UR3   | 982551  | 982551  | 1328400   | 73.965  |
| 4330 | 4330 | OAKFIELD MUNICIPAL WATER UTILITY     | 4330WR1   | 22358   | 0       | 23698     | 94.346  |



| NUMB | NUMB | NAME                                  | DOCKET     | GRANTED | REQUEST | OPREV    | PERCENT |
|------|------|---------------------------------------|------------|---------|---------|----------|---------|
| 4340 | 4340 | OCONOMOWOC UTILITIES                  | 4340ER100  | 236193  | 0       | 6044400  | 3.908   |
| 4340 | 4340 | OCONOMOWOC UTILITIES                  | 4340WR100  | 58317   | 0       | 600875   | 9.705   |
| 4400 | 4400 | OMRO MUN WATER AND SEWER UTILITY      | 4400UR100  | 18533   | 0       | 220523   | 8.404   |
| 4400 | 4400 | OMRO MUN WATER AND SEWER UTILITY      | 4400WR100  | 27469   | 0       | 105646   | 26.001  |
| 4430 | 4430 | GOSTBURG MUNICIPAL WATER UTILITY      | 4430WR2    | 16689   | 0       | 37152    | 44.921  |
| 4450 | 4450 | ORFORDVILLE MUNICIPAL WATER UTILITY   | 4450WR2    | 10212   | 0       | 72755    | 14.036  |
| 4480 | 4480 | OSHKOSH MUNICIPAL WATER UTILITY       | 4480WR3    | 437363  | 0       | 1807975  | 24.191  |
| 4500 | 4500 | OWEN MUN WATER AND SEWER UTILITY      | 4500WR100  | 10899   | 0       | 73269    | 14.875  |
| 4510 | 4510 | PADDOCK LAKE MUN WATER UTILITY        | 4510WR100  | 8411    | 0       | 11460    | 73.394  |
| 4520 | 4520 | PALMYRA MUNICIPAL WATER UTILITY       | 4520WR2    | 8900    | 0       | 166926   | 5.332   |
| 4540 | 4540 | PARDEEVILLE MUN WATER & SEWER UTILITY | 4540UR3    | 20609   | 0       | 61298    | 33.621  |
| 4540 | 4540 | PARDEEVILLE MUN WATER & SEWER UTILITY | 4540WR3    | 8459    | 0       | 57500    | 14.711  |
| 4580 | 4580 | PEOPLES TELEPHONE CO (MOUNT HOPE)     | 0005TR3    | 19469   | 0       | 642531   | 3.030   |
| 4590 | 4590 | PEOPLES TELEPHONE CO, THE (RANDOLPH)  | 4590TR7    | 386470  | 515000  | 24335100 | 15.871  |
| 4610 | 4610 | PESHIGO MUN WATER & SEWER DEPT        | 4610WR1    | 18303   | 0       | 127695   | 14.333  |
| 4660 | 4660 | PIONEER POWER AND LIGHT COMPANY       | 4660ER2    | 92887   | 0       | 868122   | 10.700  |
| 4700 | 4700 | PLATTEVILLE MUN WATER & SEWER COMM    | 4700UR3    | 127214  | 0       | 280100   | 45.417  |
| 4700 | 4700 | PLATTEVILLE MUN WATER & SEWER COMM    | 4700WR3    | 17243   | 0       | 511950   | 3.368   |
| 4730 | 4730 | PLEASANT PRAIRIE, TN. OF, WATER UTIL  | 4730WR1    | 109512  | 0       | 169410   | 64.643  |
| 4740 | 4740 | PLYMOUTH UTILITIES                    | 4740ER4    | 166500  | 0       | 5466800  | 3.046   |
| 4740 | 4740 | PLYMOUTH UTILITIES                    | 4740WR1    | 163101  | 0       | 257200   | 63.414  |
| 4760 | 4760 | PORTAGE MUNICIPAL WATER UTILITY       | 4760WR100  | 157138  | 0       | 597198   | 26.313  |
| 4770 | 4770 | PORT EDWARDS MUNICIPAL WATER UTILITY  | 4770WR1    | 57590   | 0       | 122725   | 46.926  |
| 4775 | 4775 | PORTLAND SANITARY DISTRICT NO. 1      | PWACO61884 | 436     | 0       | 9931     | 4.390   |
| 4800 | 4800 | POUND MUNICIPAL WATER UTILITY         | 4800WR1    | 12241   | 0       | 12846    | 95.290  |
| 4820 | 4820 | PRAIRIE DU CHIEN MUN WATER UTILITY    | 4820WR3    | 39925   | 0       | 255931   | 15.600  |
| 4880 | 4880 | PRINCETON MUN WATER & ELECTRIC UTIL   | 4880ER100  | 55032   | 0       | 578419   | 9.514   |
| 4880 | 4880 | PRINCETON MUN WATER & ELECTRIC UTIL   | 4880WR6    | 25830   | 0       | 55814    | 46.279  |
| 4900 | 4900 | RACINE MUNICIPAL WATER UTILITY        | 4900WR5    | 474622  | 0       | 4890000  | 9.706   |
| 4920 | 4920 | RANDOLPH MUNICIPAL WATER UTILITY      | 4920WR3    | 26361   | 0       | 45803    | 57.553  |
| 4990 | 4990 | REESEVILLE MUN WATER & SEWER UTILITY  | 4990WR1    | 7579    | 0       | 23229    | 32.627  |
| 5020 | 5020 | RHINELANDER TELEPHONE COMPANY         | 0005TR3    | 116000  | 0       | 3708000  | 3.128   |
| 5040 | 5040 | RIB LAKE TELEPHONE COMPANY            | 5040TR2    | 3390    | 0       | 317610   | 1.067   |
| 5071 | 5071 | RICHLAND CENTER WATER UTILITY         | 5071WR1    | 64600   | 0       | 169949   | 38.011  |
| 5140 | 5140 | ROCK RIVER TELEPHONE COMPANY          | 5140TR2    | 59184   | 80000   | 585417   | 10.110  |
| 5160 | 5160 | ROME WATER UTILITY, LTD.              | 5160WR100  | 6303    | 0       | 45126    | 15.297  |
| 5180 | 5180 | ROTHSCHILD MUNICIPAL WATER UTILITY    | 5180WR100  | 81885   | 0       | 220575   | 37.123  |
| 5180 | 5180 | ROTHSCHILD MUNICIPAL WATER UTILITY    | 5180WR4    | 36706   | 0       | 183708   | 19.981  |
| 5240 | 5240 | ST JOSEPHS SANITARY DISTRICT #1       | 5240WR1    | 19540   | 0       | 8429     | 231.819 |
| 5270 | 5270 | SAUKVILLE MUN WATER & SEWER UTILITY   | 5270WR100  | 109248  | 0       | 151029   | 72.336  |
| 5280 | 5280 | SCANDINAVIA TELEPHONE COMPANY         | 0005TR3    | 20280   | 0       | 872000   | 2.326   |
| 5300 | 5300 | SENECA, TN. OF, SANITARY DISTRICT 1   | 5300WR2    | 15843   | 0       | 10460    | 151.463 |
| 5330 | 5330 | SHARON MUN WATER & SEWER UTILITY      | 5330SR1    | 54308   | 0       | 86793    | 62.572  |
| 5340 | 5340 | SHARON TELEPHONE COMPANY              | 0005TR3    | 10527   | 0       | 297000   | 3.544   |
| 5350 | 5350 | SHAWANO MUN WATER & ELECTRIC UTILITY  | PTAO81784  | 202900  | 0       | 565529   | 35.878  |
| 5350 | 5350 | SHAWANO MUN WATER & ELECTRIC UTILITY  | 5350SR100  | 186077  | 186077  | 581400   | 32.005  |
| 5370 | 5370 | SHEBOYGAN MUNICIPAL WATER UTILITY     | 5370WR2    | 578362  | 0       | 1355275  | 42.675  |
| 5380 | 5380 | SHEBOYGAN FALLS MUN WATER & ELECTRIC  | PWACO32184 | 48760   | 0       | 414506   | 11.763  |
| 5390 | 5390 | SHELBY SANITARY DISTRICT NUMBER TWO   | 5390WR100  | 32203   | 0       | 35028    | 91.935  |
| 5410 | 5410 | SHELL LAKE TELEPHONE COMPANY          | 0005TR3    | 22107   | 0       | 532000   | 4.155   |
| 5440 | 5440 | SHOREWOOD MUNICIPAL WATER UTILITY     | 5440WR4    | 56200   | 0       | 466700   | 12.042  |
| 5450 | 5450 | SHOREWOOD HILLS MUN WATER UTILITY     | PWACO12584 | 4787    | 0       | 52336    | 9.147   |
| 5490 | 5490 | SIREN TELEPHONE COMPANY INCORPORATED  | 0005TR3    | 18198   | 0       | 462000   | 3.939   |
| 5500 | 5500 | SISTER BAY WATER AND SEWER UTILITY    | 5500WR100  | 14775   | 0       | 74406    | 19.857  |

| NUMB | NUMB | NAME                                 | DOCKET     | GRANTED | REQUEST | OPREV    | PERCENT |
|------|------|--------------------------------------|------------|---------|---------|----------|---------|
| 5520 | 5520 | SOLDIERS GROVE MUN WATER UTILITY     | 5520WR100  | 23079   | 0       | 54540    | 42.316  |
| 5530 | 5530 | SOLO SPRINGS TELEPHONE COMPANY       | 0005TR3    | 146000  | 0       | 5197000  | 2.809   |
| 5570 | 5570 | SOUTHEAST TELEPHONE CO OF WISC, INC  | 0005TR3    | 57899   | 0       | 1989101  | 2.911   |
| 5580 | 5580 | SOUTH LAWN SANITARY DISTRICT         | PWACO93083 | 5370    | 0       | 51936    | 10.340  |
| 5580 | 5580 | SOUTH LAWN SANITARY DISTRICT         | 5580WR3    | 12033   | 0       | 54877    | 21.927  |
| 5610 | 5610 | SPARTA MUNICIPAL WATER UTILITY       | 5610WR2    | 75072   | 0       | 232931   | 32.229  |
| 5640 | 5640 | SPRING GREEN MUNICIPAL WATER UTILITY | 5640WR100  | 86768   | 0       | 44485    | 195.050 |
| 5680 | 5680 | STATE LONG DISTANCE TELEPHONE CO     | 0005TR3    | 61020   | 0       | 2851980  | 2.140   |
| 5680 | 5680 | STATE LONG DISTANCE TELEPHONE CO     | 5680TR3    | 57333   | 246500  | 2751291  | 2.084   |
| 5710 | 5710 | STOCKBRIDGE & SHERWOOD TELEPHONE CO  | 5710TR100  | 59593   | 90000   | 853400   | 6.983   |
| 5760 | 5760 | STRAFFORD MUN WATER & ELECTRIC UTIL  | 5760WR1    | 23347   | 0       | 47745    | 48.899  |
| 5790 | 5790 | STURTEVANT WATER AND SEWER COMM      | 5790UR2    | 103635  | 0       | 190326   | 54.451  |
| 5790 | 5790 | STURTEVANT WATER AND SEWER COMM      | 5790UR2    | 71518   | 0       | 118932   | 60.134  |
| 5810 | 5810 | SUN PRAIRIE WATER & ELECTRIC UTILITY | 5810WR6    | 47252   | 0       | 429874   | 10.992  |
| 5820 | 5820 | SUPERIOR WATER LIGHT AND POWER CO    | 5820UR12   | 1125787 | 1489885 | 22590494 | 4.983   |
| 5820 | 5820 | SUPERIOR WATER LIGHT AND POWER CO    | 5820UR12   | 282653  | 581757  | 11041566 | 2.560   |
| 5820 | 5820 | SUPERIOR WATER LIGHT AND POWER CO    | 5820UR12   | 108872  | 244329  | 2413129  | 4.512   |
| 5870 | 5870 | THERESA MUN WATER AND SEWER UTILITY  | 5870SR1    | 28440   | 0       | 35975    | 79.055  |
| 5890 | 5890 | THORP TELEPHONE COMPANY              | 0005TR3    | 22409   | 0       | 868000   | 2.582   |
| 5920 | 5920 | TOMAH MUNICIPAL WATER UTILITY        | 5920WR2    | 25186   | 0       | 299100   | 25.137  |
| 5930 | 5930 | TOMAHAWK MUN WATER & SEWER UTILITY   | 5930UR4    | 30559   | 0       | 242166   | 12.619  |
| 5930 | 5930 | TOMAHAWK MUN WATER & SEWER UTILITY   | 5930UR4    | 15844   | 0       | 237399   | 6.674   |
| 5970 | 5970 | TURTLE LAKE MUN WATER & SEWER UTIL   | 5970UR2    | 75137   | 0       | 163731   | 45.891  |
| 5970 | 5970 | TURTLE LAKE MUN WATER & SEWER UTIL   | 5970UR2    | 14484   | 0       | 52311    | 27.688  |
| 6000 | 6000 | UNION TELEPHONE COMPANY              | 0005TR3    | 36143   | 0       | 1453000  | 2.487   |
| 6000 | 6000 | UNION TELEPHONE COMPANY              | 6000TR2    | 152400  | 157916  | 1367000  | 11.149  |
| 6020 | 6020 | UNION GROVE MUNICIPAL WATER UTILITY  | 6020WR1    | 76889   | 0       | 98334    | 78.192  |
| 6040 | 6040 | UNIVERSAL TEL CO OF NORTHERN WIS INC | 0005TR3    | 122000  | 0       | 4195000  | 2.908   |
| 6050 | 6050 | URBAN TELEPHONE CORPORATION          | 0005TR3    | 164000  | 0       | 5534000  | 2.963   |
| 6070 | 6070 | VALDERS TELEPHONE COMPANY            | 0005TR3    | 5000    | 0       | 740000   | 0.676   |
| 6100 | 6100 | VERONA MUN WATER AND SEWER UTILITY   | 6100WR4    | 10456   | 0       | 7884     | 7.884   |
| 6110 | 6110 | VESPER MUN WATER AND SEWER UTILITY   | 6110UR1    | 23536   | 0       | 31210    | 75.412  |
| 6110 | 6110 | VESPER MUN WATER AND SEWER UTILITY   | 6110UR1    | 22933   | 0       | 34116    | 67.221  |
| 6130 | 6130 | VIOLA MUN WATER AND ELECTRIC UTILITY | 6130WR3    | 12385   | 0       | 22830    | 54.249  |
| 6150 | 6150 | VIRQUA TELEPHONE COMPANY             | 0005TR3    | 34170   | 0       | 1676000  | 2.039   |
| 6170 | 6170 | WALDO MUN WATER AND SEWER UTILITY    | 6170UR1    | 18538   | 0       | 13539    | 136.923 |
| 6170 | 6170 | WALDO MUN WATER AND SEWER UTILITY    | 6170UR1    | 4387    | 0       | 17632    | 24.881  |
| 6220 | 6220 | WATERLOO WATER AND ELECTRIC COMM     | 6220HR4    | 25999   | 0       | 79900    | 32.539  |
| 6220 | 6220 | WATERLOO WATER AND ELECTRIC COMM     | 6220UR1    | 31572   | 0       | 96800    | 32.616  |
| 6220 | 6220 | WATERLOO WATER AND ELECTRIC COMM     | 6220UR1    | 28897   | 0       | 75200    | 38.427  |
| 6230 | 6230 | WATERTOWN MUNICIPAL WATER UTILITY    | 6230WR100  | 80678   | 0       | 819538   | 9.844   |
| 6250 | 6250 | WAUNAKEE TELEPHONE COMPANY INC       | 0005TR3    | 35005   | 0       | 1100000  | 3.182   |
| 6250 | 6250 | WAUNAKEE TELEPHONE COMPANY INC       | 6250TR100  | 41423   | 77000   | 1248600  | 3.318   |
| 6260 | 6260 | WAUNAKEE WATER AND LIGHT COMMISSION  | 6260WR4    | 83835   | 0       | 132509   | 63.267  |
| 6300 | 6300 | WAUSAU MUNICIPAL WATER UTILITY       | 6300WR3    | 44894   | 0       | 1574400  | 2.851   |
| 6310 | 6310 | WAUSAUKEE MUNICIPAL WATER UTILITY    | 6310WR100  | 10271   | 0       | 23550    | 43.614  |
| 6320 | 6320 | WAUWATOSA MUNICIPAL WATER UTILITY    | 6320WR100  | 249182  | 249182  | 2780800  | 8.961   |
| 6335 | 6335 | WAVERLY SANITARY DISTRICT/C GIRDLEY  | 6335WR1    | 0       | 0       | 73531    | 0.000   |
| 6340 | 6340 | WAYSIDE TELEPHONE COMPANY            | 0005TR3    | 13576   | 0       | 375000   | 3.620   |
| 6350 | 6350 | WEBSTER MUNICIPAL WATER UTILITY      | 6350WR2    | 25174   | 0       | 21545    | 116.844 |
| 6360 | 6360 | WEST ALLIS MUNICIPAL WATER UTILITY   | PWACO70183 | -117363 | 0       | 2574527  | -4.559  |
| 6360 | 6360 | WEST ALLIS MUNICIPAL WATER UTILITY   | 6360WR2    | 174546  | 0       | 2942850  | 5.931   |
| 6420 | 6420 | WESTON, TN, OF MUN WATER UTILITY     | 6420WR2    | 145448  | 0       | 371127   | 39.191  |
| 6460 | 6460 | WEYAUWEGA TEL DIV/CENCOM OF WI INC   | 6460TR2    | 115230  | 194400  | 1031400  | 11.172  |

| NUMB | NUMB | NAME                                 | DOCKET    | GRANTED   | REQUEST   | OPREV      | PERCENT |
|------|------|--------------------------------------|-----------|-----------|-----------|------------|---------|
| 6480 | 6480 | WHITEFISH BAY MUN WATER UTILITY      | 6480WR100 | 108547    | 0         | 491296     | 22.094  |
| 6520 | 6520 | WHITEWATER MUNICIPAL WATER UTILITY   | 6520WR3   | 43653     | 0         | 337525     | 12.933  |
| 6530 | 6530 | WHITING MUN WATER AND SEWER UTILITY  | 6530UR2   | 92160     | 0         | 65463      | 140.782 |
| 6530 | 6530 | WHITING MUN WATER AND SEWER UTILITY  | 6530UR2   | 17251     | 0         | 57276      | 30.119  |
| 6540 | 6540 | WILLIAMS BAY MUNICIPAL WATER UTILITY | 6540WR3   | 42448     | 0         | 217844     | 19.486  |
| 6550 | 6550 | WILTON MUNICIPAL WATER UTILITY       | 6550WR2   | 31121     | 0         | 18213      | 170.872 |
| 6580 | 6580 | WINNECONNE WATER AND SEWER UTILITY   | 6580WR1   | 71541     | 0         | 92986      | 76.937  |
| 6600 | 6600 | WIOTA SANITARY DISTRICT NUMBER ONE   | 6600WR2   | 3111      | 0         | 38167      | 8.151   |
| 6620 | 6620 | WISCONSIN DELLS MUN WATER UTILITY    | 6620WR100 | 44626     | 0         | 161029     | 27.713  |
| 6630 | 6630 | WISCONSIN ELECTRIC POWER COMPANY     | 6630ER18  | -20550000 | 0         | 1023572000 | -2.008  |
| 6630 | 6630 | WISCONSIN ELECTRIC POWER COMPANY     | 6630ER19  | -26480000 | -8100000  | 1055599000 | -2.509  |
| 6630 | 6630 | WISCONSIN ELECTRIC POWER COMPANY     | 6630HR14  | 40000     | 636000    | 10983000   | 3.642   |
| 6630 | 6630 | WISCONSIN ELECTRIC POWER COMPANY     | 6630HR16  | 320827    | 700000    | 12004500   | 2.673   |
| 6640 | 6640 | WISCONSIN FUEL AND LIGHT COMPANY     | 6640GR10  | 845124    | 1307000   | 52070659   | 1.623   |
| 6650 | 6650 | WISCONSIN GAS COMPANY                | 6650GR18  | 10329000  | 13041000  | 621219000  | 1.663   |
| 6650 | 6650 | WISCONSIN GAS COMPANY                | 6650GR19  | -1345000  | 13232000  | 653142000  | -0.206  |
| 6670 | 6670 | WISCONSIN NATURAL GAS COMPANY        | 6670GR10  | 5790000   | 10852000  | 351241000  | 1.648   |
| 6670 | 6670 | WISCONSIN NATURAL GAS COMPANY        | 6670GR11  | 4400000   | 7320000   | 325833000  | 1.350   |
| 6670 | 6670 | WISCONSIN NATURAL GAS COMPANY        | 6670GR11  | 152000    | 0         | 330233     | 46.028  |
| 6680 | 6680 | WISCONSIN POWER AND LIGHT COMPANY    | 6680UR13  | 5679000   | 8800000   | 327082000  | 1.736   |
| 6680 | 6680 | WISCONSIN POWER AND LIGHT COMPANY    | 6680UR13  | 2069000   | 3379000   | 146282000  | 1.414   |
| 6680 | 6680 | WISCONSIN POWER AND LIGHT COMPANY    | 6680UR13  | 272000    | 255000    | 3049000    | 8.921   |
| 6680 | 6680 | WISCONSIN POWER AND LIGHT COMPANY    | 6680UR14  | -14404000 | 18900000  | 343303000  | -4.196  |
| 6680 | 6680 | WISCONSIN POWER AND LIGHT COMPANY    | 6680UR14  | 1800000   | 3500000   | 138256000  | 1.302   |
| 6680 | 6680 | WISCONSIN POWER AND LIGHT COMPANY    | 6680UR14  | 265000    | 0         | 3380000    | 7.840   |
| 6690 | 6690 | WISCONSIN PUBLIC SERVICE CORPORATION | 6690UR20  | -11577000 | 21049000  | 362500000  | -3.194  |
| 6690 | 6690 | WISCONSIN PUBLIC SERVICE CORPORATION | 6690UR20  | 1306000   | 6138000   | 221955000  | 0.588   |
| 6710 | 6710 | WISCONSIN SOUTHERN GAS COMPANY       | 6710GR10  | 633981    | 1684672   | 40143422   | 1.579   |
| 6710 | 6710 | WISCONSIN SOUTHERN GAS COMPANY       | 6710GR11  | 1311418   | 3800000   | 40259900   | 3.257   |
| 6720 | 6720 | WISCONSIN BELL, INC.                 | 6720TI3   | -23160000 | 0         | 700689000  | -3.305  |
| 6720 | 6720 | WISCONSIN BELL, INC.                 | 6720TR36  | 88680000  | 162262000 | 599540000  | 14.791  |
| 6730 | 6730 | WITHEE MUNICIPAL WATER UTILITY       | 6730WR1   | 19853     | 0         | 14405      | 137.820 |
| 6750 | 6750 | WITTENBERG TELEPHONE COMPANY         | 0005TR3   | 20026     | 0         | 623000     | 3.214   |
| 6750 | 6750 | WITTENBERG TELEPHONE COMPANY         | 6750TR2   | 101700    | 82400     | 589400     | 17.255  |
| 6770 | 6770 | WOOD COUNTY TELEPHONE COMPANY        | 0005TR3   | 237000    | 0         | 9044000    | 2.621   |
|      |      |                                      |           | =====     | =====     | =====      | =====   |
|      |      |                                      |           | 98419422  | 348786004 | 8522065677 |         |

**APPENDIX B****Other Commission Proceedings**

The commission issued 330 orders in proceedings other than those dealing with rates. The following pages list orders issued in cases open some time between January 1, 1984, and June 30, 1985, including:

|           |                                  |
|-----------|----------------------------------|
| 20        | Abandonment Orders               |
| 64        | Affiliated Interest Orders       |
| 62        | Construction Orders              |
| 54        | Depreciation Orders              |
| 11        | Inquiry and Investigation Orders |
| 10        | Purchase Orders                  |
| 19        | Rules Orders                     |
| 14        | Service Orders                   |
| 41        | Stocks and Bonds Orders          |
| <u>35</u> | Other Orders                     |
| 330       | Total                            |

**Key**

Read the entries left to right. Each entry begins with the date the order was issued — year, month, day. The date is followed by the docket number, name of the utility involved and a short description of the subject treated in the order.

PUBLIC SERVICE COMMISSION  
 ALL ABANDONMENT ORDERS ISSUED FOR THE 1983-1985 BIENNIUM  
 DOCKET LIST BY ORDER DATE

01/21/86

|          |                |  |  |
|----------|----------------|--|--|
| 84/01/17 | 8008-TA-000001 | ALL CITY COMMUNICATIONS CO. INC.   | AUTHORITY TO SELL ASSETS TO RADIO DISPATCH, INC    |
| 84/01/24 | 0920-SA-000001 | CAMBRIDGE MUNICIPAL WATER UTILITY  | SEPARATE WATER & SEWER UTILITY                     |
| 84/02/07 | 6680-EA-000006 | WP&L CO.<br>AUTH. TO BUY/SELL CERTAIN ELECTRIC DISTRIBUTION<br>FACILITIES LOCATED WITHIN THE CITY OF SUN PRAIRIE                               | JOINT APPL. OF SUN PRAIRIE MUN. UTIL. & WP&L FOR   |
| 84/04/12 | 6720-TA-000002 | WISCONSIN BELL, INC.<br>OF WISCONSIN   | APPL. OF WBI TO SELL PROPERTY TO CENTURY TELEPHONE |
| 84/06/05 | 6630-EA-000001 | WEPCO<br>AUTHORITY TO BUY/SELL CERTAIN ELECTRIC DIST<br>FACILITIES LOCATED WITHIN THE CITY OF ELKHORN  | JOINT APPL OF ELKHORN MUN. UTILITY AND WEPCO FOR   |
| 84/06/21 | 8150-TA-000001 | SOUTH FORK TEL. CO.<br>SERVICE & FACILITIES AT ITS SERVICE STATION CO.   | APPL. OF THE SOUTH FORK TELEPHONE CO. TO ABANDON   |
| 84/07/17 | 8032-TA-000001 | CURTIN CALL CORPORATION<br>TINUE ONE-WAY PAGING SERVICE AS A PUBLIC UTILITY  | AUTH. OF CURTAIN CALL CORP. FOR AUTH. TO DISCON-   |
| 84/08/23 | 5060-HA-000002 | RICE LAKE STEAM CORPORATION<br>PUBLIC UTILITY, FOR AUTHORITY TO ABANDON SERVICE<br>AND DISCONTINUE ITS OPERATION AS A PUBLIC UTILITY.          | APPL. OF THE RICE LAKE STEAM CORP., AS A STEAM     |
| 84/10/02 | 6630-EA-000100 | WISCONSIN ELECTRIC POWER COMPANY<br>HORICON FROM WEPCO TO WP&L CO  | TRANSFER ELECTRIC SERVICE OF DANIEL BACKHAUS OF    |
| 84/10/18 | 1180-SA-000001 | CLEVELAND MUN WATER AND SEWER UTIL<br>AS A COMBINED WATER AND SEWER PUBLIC UTILITY FOR<br>AUTH. TO SPERATE THE WATER AND SEWER UTILITY AND     | APPL. OF THE VILLAGE OF CLEVELAND, MANITOWOC CNTY  |
| 84/10/23 | 6680-EA-000100 | WISCONSIN POWER AND LIGHT COMPANY  | SELL TRANSMISSION FACILITIES TO BOSCOBEL           |
| 85/01/22 | 6720-TA-000100 | WISCONSIN BELL, INC.<br>TO CEASE OFFERING PARTY LINE SERVICE IN ALL OF ITS<br>EXCHANGES  | INVESTIGATION INTO THE REQUEST BY WIS. BELL, INC.  |
| 85/01/31 | 7050-TA-000100 | COM-TEC, INC.<br>APPLICATION FOR FULL TITLE)   | SELL COM-TEC TO SCHNEIDER COMMUNICATIONS, INC (SEE |
| 85/01/31 | 7070-TA-000100 | MIDCO-TEL, INC.<br>(SEE APPLICATION FOR FULL TITLE)  | APPLICATION FOR SCHNEIDER COMM TO BUY MIDCO-TEL    |
| 85/02/12 | 5060-HA-000001 | RICE LAKE STEAM CORPORATION<br>AND THE RICE LAKE STEAM CORP. TO BUY/SELL THE<br>ENTIRE DIST. STEAM HEATING UTILITY LOCATED IN THE              | JOINT APPL. OF THE RICE LAKE CENTRAL ENERGY CORP.  |
| 85/03/25 | 1570-EA-000100 | DEERFIELD MUN WATER & ELECTRIC UTIL<br>ASSETS TO WISCONSIN POWER & LIGHT COMPANY   | THE VILLAGE OF DEERFIELD TO SELL PUBLIC UTILITY    |
| 85/04/04 | 6690-EA-000100 | WISCONSIN PUBLIC SERVICE CORPORATIO<br>FOR APPROVAL OF THE SALE OF CERTAIN ELECTRIC<br>UTILITY FACILITIES TO THE CITY OF TWO RIVERS,           | APPLICATION OF WISCONSIN PUBLIC SERVICE CORP.      |
| 85/04/25 | 4540-SA-000100 | PARDEEVILLE MUN WATER & SEWER UTILI<br>COMBINED WATER & SEWER PUBLIC UTIL., FOR AUTH. TO<br>SEPARATE THE WATER & SEWER UTIL. & FORM A SEPARATE | APPL OF VILL. OF PARDEEVILLE, COLUMBIA CNTY, AS A  |
| 85/05/09 | 9325-SA-000100 | MAYVILLE SEWER UTILITY<br>JURISDICTION WITH RESPECT TO RATES FOR SEWER<br>SERVICE INITIALLY EXERTED BY ORDER DATED JUNE 3,                     | REQUEST FOR THE COMMISSION TO DISCONTINUE ITS      |
| 85/06/27 | 2180-TA-000100 | GENERAL TELEPHONE COMPANY OF WISC<br>TELEPHONE INSTRUMENTS AS A REGULATED, TARIFFED<br>SERVICE   | AUTHORITY TO DISCONTINUE PROVISION OF SINGLE LINE  |

PUBLIC SERVICE COMMISSION  
ALL AFF INTEREST ORDERS ISSUED FOR THE 1983-1985 BIENNIUM  
DOCKET LIST BY ORDER DATE

01/21/86

|          |                |  |  |
|----------|----------------|--|--|
| 83/12/22 | 0265-AT-000001 | AT&T COMMUNICATIONS OF WISCONSIN   | AFFILIATED INTEREST AGREEMENT WITH AT&T COMM. INC.               |
| 83/12/22 | 0265-AT-000002 | AT&T COMMUNICATIONS OF WISCONSIN TELEGRAPH CO.   | AFFILIATED INTEREST AGREEMENT WITH AMERICAN TEL. & TELEGRAPH CO. |
| 83/12/22 | 0265-AT-000003 | AT&T COMMUNICATIONS OF WISCONSIN ELECTRIC CO., INC   | AFFILIATED INTEREST AGREEMENT WITH WESTERN                       |
| 83/12/22 | 6720-AT-000004 | WISCONSIN BELL, INC. SERVICES, INC   | APPROVAL OF AGREEMENTS WITH & REGARDING AMERITECH                |
| 83/12/22 | 6720-AT-000005 | WISCONSIN BELL, INC. INFORMATION TECHNOLOGIES CORP.(AMERITECH)   | APPROVAL OF COST-SHARING AGREEMENT WITH AMERICAN                 |
| 84/02/14 | 3020-AU-000003 | LAKE SUPERIOR DISTRICT POWER COMPAN NSP, NOT TO EXCEED \$7,000,000 OUTSTANDING AT ONE TIME DURING 1984                           | APPROVAL OF LOANS BY SHORT-TERM NOTES FROM PARENT,               |
| 84/02/16 | 3790-AT-000001 | MONDOVI TELEPHONE COMPANY AFFILIATED INTEREST CONTRACT WITH BADGER COMMUNICATIONS CORPORATION.                                   | APPL. OF MONDOVI TELEPHONE CO. FOR APPROVAL OF                   |
| 84/02/21 | 4220-AU-000014 | NSP SHORT-TERM NOTES FROM ITS PARENT, NSP OF MINN., NOT TO EXCEED \$25,000,000 TO BE OUTSTANDING AT ANY                          | APPL OF NSP CO OF WI FOR APPROVAL OF LOANS BY                    |
| 84/03/05 | 0850-AT-000001 | BURLINGTON BRIGHTON & WHEATLAND TEL PAGING, INC.   | AFFILIATED INTEREST AGREEMENT WITH AMERICAN                      |
| 84/03/05 | 1640-AT-000001 | DODGE COUNTY TELEPHONE COMPANY INC.  | AFFILIATED INTEREST CONTRACT WITH AMERICAN PAGING,               |
| 84/03/05 | 3970-AT-000002 | MOUNT VERNON TELEPHONE COMPANY AFFILIATED INTEREST CONTRACT WITH AMERICAN PAGING, INC. (OF WIS.)                                 | APPL. OF MT. VERNON TELEPHONE CO. FOR APPROVAL OF                |
| 84/06/12 | 0150-AT-000001 | AMERY TELEPHONE COMPANY COMMUNITY COMMUNICATIONS, INC.   | AFFILIATED INTEREST CONTRACT WITH NORTHWEST                      |
| 84/07/17 | 8077-AT-000001 | RADIO DISPATCH, INC. FILIATED INTEREST CONTRACT WITH ALL CITY COMMUNICATIONS CO, INC   | APPL. OF RADIO DISPATCH, INC FOR APPROVAL OF AF-                 |
| 84/08/30 | 1020-AT-000001 | CENTRAL STATE TELEPHONE COMPANY OF AFFILIATED INTEREST CONTRACT WITH QUINCY TELEPHONE COMPANY                                    | APPLICATION OF CENTRAL STATE TEL. CO. FOR APPROVAL               |
| 84/09/11 | 2030-AT-000001 | FOOTVILLE TELEPHONE COMPANY AFFILIATED INTEREST CONTRACT WITH NORTH-WEST SERVICES CORPORATION (N.W. DATATECH CORP.)              | APPL. OF FOOTVILLE TELEPHONE CO. FOR APPROVAL OF                 |
| 84/09/11 | 2030-AT-000002 | FOOTVILLE TELEPHONE COMPANY AL OF AFFILIATED INTEREST CONTRACT WITH FOOTVILLE TELEPHONE CO.                                      | APPLICATION OF NORTH-WEST TELEPHONE CO. FOR APPROV               |
| 84/09/11 | 4260-AT-000003 | NORTH-WEST TELEPHONE COMPANY AFFILIATED INTEREST CONTRACT WITH NORTH-WEST SERVICES CORP.(N.W. DATATECH CORP.)                    | APPL. OF NORTH-WEST TEL. CO FOR APPROVAL OF                      |
| 84/09/11 | 4260-AT-000005 | NORTH-WEST TELEPHONE COMPANY AFFILIATED INTEREST CONTRACT WITH FOOTVILLE TELEPHONE CO..  | APPL. OF NORTH-WEST TEL. CO. FOR APPROVAL OF                     |
| 84/09/11 | 4260-AT-000006 | NORTH-WEST TELEPHONE COMPANY AFFILIATED INTEREST CONTRACT WITH NORTEL DIRECTORY, INC.(GROMSETH DIRECTORY SERV. INC.)             | APPL. OF NORTH-WEST TEL. CO FOR APPROVAL OF                      |
| 84/09/11 | 4260-AT-000010 | NORTH-WEST TELEPHONE COMPANY AFFILIATED INTEREST CONTRACT WITH NORTH-WEST TELECOMMUNICATIONS, INC.                               | APPL. OF NORTH-WEST TEL. CO FOR APPROVAL OF                      |
| 84/09/11 | 4260-AT-000100 | NORTH-WEST TELEPHONE COMPANY APPROVAL OF AFFILIATED INTEREST CONTRACT FOR DATA PROCESSING & EQUIPMENT LEASING SERVICES W/ NORTH- | APPLICATION OF NORTH-WEST TELEPHONE COMPANY FOR                  |
| 84/09/18 | 2030-AT-000003 | FOOTVILLE TELEPHONE COMPANY OF AFFILIATED INTEREST CONTRACT WITH NORTH-WEST TELECOMMUNICATIONS, INC.                             | APPL. OF FOOTVILLE TELEPHONE COMPANY FOR APPROVAL                |
| 84/09/18 | 4260-AT-000004 | NORTH-WEST TELEPHONE COMPANY AFFILIATED INTEREST CONTRACT WITH NORCOM VIDEO, INC.  | APPL. OF NORTH-WEST TEL. CO FOR APPROVAL OF                      |
| 84/09/18 | 4260-AT-000008 | NORTH-WEST TELEPHONE COMPANY AFFILIATED INTEREST CONTRACT WITH NORTH-WEST CELLULAR, INC.   | APPL. OF NORTH-WEST TEL. CO FOR APPROVAL OF                      |
| 84/09/18 | 4260-AT-000009 | NORTH-WEST TELEPHONE COMPANY AFFILIATED INTEREST CONTRACT WITH NORTH-WEST TELECOMMUNICATIONS, INC.                               | APPL. OF NORTH-WEST TEL. CO FOR APPROVAL OF                      |

PUBLIC SERVICE COMMISSION  
 ALL AFF INTEREST ORDERS ISSUED FOR THE 1983-1985 BIENNIUM  
 DOCKET LIST BY ORDER DATE

01/21/86

|   |  |
|---|--|
| 84/11/13 1140-AG-000100 CITY GAS COMPANY OF ANTIGO  | APPROVAL OF AFFILIATED INTEREST AGREEMENT  |
| 84/12/04 1015-AT-000001 CENCOM OF WISCONSIN, INC.<br>P&C ENGINEERING, INC.  | AFFILIATED INTEREST AGREEMENT WITH ASSOCIATED  |
| 84/12/04 5040-AT-000001 RIB LAKE TELEPHONE COMPANY<br>AFFILIATED INTEREST CONTRACT WITH RIB LAKE<br>TELECOM., INC.  | APPL. OF RIB LAKE TEL. CO. FOR APPROVAL OF   |
| 84/12/06 6720-AT-000007 WISCONSIN BELL, INC.<br>APPROVAL OF AFFILIATED INTEREST CONTRACT WITH WIS-<br>CONSIN BELL COMMUNICATIONS, INC.                                | APPL. OF WISCONSIN BELL, INC. (FORMERLY WTC) FOR   |
| 84/12/13 6720-AT-000006 WISCONSIN BELL, INC.<br>CONTRACTS WITH AMERITECH PUBLISHING, INC  | APPL. OF WBI FOR APPROVAL OF AFFILIATED INTEREST   |
| 85/01/03 3020-AU-000100 LAKE SUPERIOR DISTRICT POWER COMPAN<br>PARENT, NSP(MN), NOT TO EXCEED \$8,000,000 OUTSTAND-<br>ING...DURING 1985; AUTH. TO ISSUE...SHORT-TERM | APPROVAL OF LOANS BY SHORT-TERM NOTES FROM ITS   |
| 85/01/08 5210-AT-000001 ST CROIX TELEPHONE COMPANY<br>AFFILIATED INTEREST CONTRACT WITH NEW RICHMOND<br>CABLE CO., INC.   | APPL. OF ST. CROIX TEL. CO FOR APPROVAL OF   |
| 85/01/10 0170-AT-000001 AMHERST TELEPHONE COMPANY<br>CABLE TELEVISION, INC.   | AFFILIATED INTEREST AGREEMENT WITH TOMORROW VALLEY   |
| 85/01/10 2180-AT-000002 GENERAL TELEPHONE COMPANY OF WISC<br>CHASE OF APPARATUS, EQUIP., & SUPPLIES FROM GTE<br>AUTO. ELEC. INC., GTE LENKURT INC., & GTE SYLVANIA    | APPL. OF GTC-WIS. FOR APPROVAL OF AGRMT. FOR PUR-<br>CHASE OF APPARATUS, EQUIP., & SUPPLIES FROM GTE |
| 85/01/10 4210-AT-000001 NORTHEAST TELEPHONE COMPANY<br>AFFILIATED INTEREST CONTRACT WITH NORTHEAST<br>COMMUNICATIONS OF WI., INC.                                     | APPL. OF NORTHEAST TELEPHONE CO. FOR APPROVAL OF   |
| 85/01/17 4590-AT-000003 PEOPLES TELEPHONE CO, THE (RANDOLPH<br>APPROVAL OF AFFILIATED INTEREST CONTRACT WITH<br>CABLE LAYERS, INC.                                    | APPL. OF PEOPLES TELEPHONE CO OF RANDOLPH FOR  |
| 85/01/17 4590-AT-000005 PEOPLES TELEPHONE CO, THE (RANDOLPH<br>APPROVAL OF AFFILIATED INTEREST CONTRACT WITH<br>PEOPLES CONSOLIDATED COMMUNICATIONS SERVICES, INC.    | APPL. OF PEOPLES TELEPHONE CO OF RANDOLPH FOR  |
| 85/01/17 4590-AT-000006 PEOPLES TELEPHONE CO, THE (RANDOLPH<br>SYSTEMS, INC   | AFFILIATED INTEREST WITH PEOPLES BROADBAND   |
| 85/01/22 2930-AT-000004 CENTURY TELEPHONE OF WIS., INC.<br>COMPUTER & FORMS   | AFFILIATED INTEREST CONTRACT WITH CENTURY  |
| 85/01/22 2930-AT-000005 CENTURY TELEPHONE OF WIS., INC.<br>GROUP, INC.  | AFFILIATED INTEREST CONTRACT WITH CENTURY SERVICE  |
| 85/01/22 2930-AT-000006 CENTURY TELEPHONE OF WIS., INC.<br>ENTERPRISES, INC. & CENTURY SERVICE GROUP, INC.  | AFFILIATED INTEREDST CONTRACT WITH CENTURY TEL.  |
| 85/01/22 2930-AT-000007 CENTURY TELEPHONE OF WIS., INC.<br>GROUP, INC.  | AFFILIATED INTEREST AGREEMENT WITH CENTURY SUPPLY  |
| 85/01/22 2930-AT-000100 CENTURY TELEPHONE OF WIS., INC.<br>PHONE ENTERPRISES, INC.  | AFFILIATED INTEREST AGREEMENT WITH CENTURY TELE-   |
| 85/01/24 3970-AT-000001 MOUNT VERNON TELEPHONE COMPANY<br>OF AFFILIATED INTEREST CONTRACT WITH VERONA<br>CABLE CO., INC.  | APPL. OF MT. VERNON TELEPHONE CO. FOR APPROVAL   |
| 85/01/29 4220-AU-000101 NORTHERN STATES POWER COMPANY<br>ITS PARENT, NSP-MINN, NOT TO EXCEED \$22,000,000<br>TO BE OUTSTANDING AT ANY ONE TIME DURING 1985            | APPROVAL OF LOANS BY SHORT-TERM NOTES FROM ITS   |
| 85/02/05 4260-AT-000007 NORTH-WEST TELEPHONE COMPANY<br>AFFILIATED INTEREST CONTRACT WITH GRONSETH<br>DIRECTORY SERVICE, INC.   | APPL. OF NORTH-WEST TEL CO. FOR APPROVAL OF  |
| 85/02/21 6630-AU-000100 WISCONSIN ELECTRIC POWER COMPANY<br>NATURAL GAS COMPANY   | AFFILIATED INTEREST AGREEMENT WITH WISCONSIN   |
| 85/02/21 7010-AT-000100 SCHNEIDER COMMUNICATIONS<br>MIDCO-TEL (SEE APPLICATION FOR FULL TITLE)  | APPROVAL OF AFFILIATED INTEREST AGREEMENT WITH   |
| 85/02/21 7010-AT-000101 SCHNEIDER COMMUNICATIONS<br>(SEE APPLICATION FOR FULL TITLE)  | AFFILIATED INTEREST ARRANGEMENT WITH COM-TEL, INC  |
| 85/04/11 4220-AU-000100 NORTHERN STATES POWER COMPANY<br>FOR NSP-MINN TO RENDER CERTAIN SERVICES TO NSP-WIS<br>IN CONN. WITH THE OPERATIONS OF A NAT. GAS TOWN        | AGREEMENT BETWEEN NSP-WIS AND NSP-MINN PROVIDING   |

PUBLIC SERVICE COMMISSION  
 ALL AFF INTEREST ORDERS ISSUED FOR THE 1983-1985 BIENNIUM  
 DOCKET LIST BY ORDER DATE

01/21/86

|          |                |                                     |   |
|----------|----------------|-------------------------------------|---|
| 85/04/30 | 3020-AU-000101 | LAKE SUPERIOR DISTRICT POWER COMPAN | APPL. OF NSP CO.-WIS. & LSDP CO. FOR APPROVAL OF AFFILIATED INTEREST CONTRACT WITH NSP-MN                   |
| 85/04/30 | 4220-AU-000102 | NORTHERN STATES POWER COMPANY       | APPL. OF NSP-WIS. & LSDP FOR APPROVAL OF AFFILIATED INTEREST CONTRACT WITH NSP-MN                           |
| 85/05/21 | 2180-AT-000100 | GENERAL TELEPHONE COMPANY OF WISC   | APPROVAL OF AFFILIATED INTEREST CONTRACT WITH GTE TELECOM MARKETING CORPORATION                             |
| 85/05/21 | 4190-AE-000100 | NORTH CENTRAL POWER COMPANY INC     | AFFILIATED INTEREST AGREEMENT WITH MRS. LULLETTE B. DAHLBERG  |
| 85/05/23 | 5800-AT-000100 | SULLIVAN TELEPHONE COMPANY          | AFFILIATED INTEREST AGREEMENT WITH NORTH-WEST DATATECH CORPORATION  |
| 85/05/30 | 1510-AE-000100 | DAHLBERG LIGHT AND POWER COMPANY    | APPL. FOR APPROVAL OF AFFILIATED INTEREST CONTRACT WITH MRS. DOROTHY E. DAHLBERG                            |
| 85/05/30 | 1840-AG-000100 | ELROY GAS INCORPORATED              | APPL. FOR APPROVAL OF AFFILIATED INTEREST CONTRACT WITH GILBERT J. LEE                                      |
| 85/06/06 | 4190-AE-000101 | NORTH CENTRAL POWER COMPANY INC     | APPLICATION OF NORTH CENTRAL POWER INC. FOR APPROVAL OF AFFILIATED TRANSACTIONS WITH ITS AFFILIATES         |
| 85/06/17 | 6630-AE-000100 | WISCONSIN ELECTRIC POWER COMPANY    | AFFILIATED INTEREST AGREEMENT WITH WISCONSIN NATURAL GAS COMPANY  |
| 85/06/17 | 6670-AG-000100 | WISCONSIN NATURAL GAS COMPANY       | AFFILIATED INTEREST AGREEMENT WITH WISCONSIN ELECTRIC POWER COMPANY   |
| 85/06/18 | 5800-AT-000102 | SULLIVAN TELEPHONE COMPANY          | AFFILIATED INTEREST AGREEMENT WITH NORTH-WEST TELEPHONE COMPANY   |
| 85/06/19 | 4260-AT-000102 | NORTH-WEST TELEPHONE COMPANY        | AFFILIATED INTEREST AGREEMENT WITH SULLIVAN TELEPHONE COMPANY   |
| 85/06/25 | 2180-AT-000101 | GENERAL TELEPHONE COMPANY OF WISC   | APPROVAL & ISSUANCE OF A PROMISSORY NOTE WITH GTE FINANCE CORP. NOT TO EXCEED \$20,000,000 PRINCIPAL AMOUNT |
| 85/06/25 | 6720-AT-000101 | WISCONSIN BELL, INC.                | DIAL TONE REFERRAL AGREEMENT BETWEEN WISCONSIN BELL, INC. AND MICHIGAN BELL COMMUNICATIONS, INC.            |



PUBLIC SERVICE COMMISSION  
 ALL CONSTRUCTION ORDERS ISSUED FOR THE 1983-1985 BIENNIUM  
 DOCKET LIST BY ORDER DATE

01/17/86

|   |   |
|---|---|
| 83/09/06 3270-CG-000009 MADISON GAS AND ELECTRIC COMPANY Y, FOR AUTH. TO CONSTRUCT 8 INCH & 6 INCH MAIN AND | APPL. OF MADISON GAS & ELECT. CO., AS A GAS UTILIT  |
| 83/09/23 4280-CE-000003 NORTHWESTERN WISCONSIN ELECTRIC CO NEAR MILLTOWN.                                   | TWO REGULATOR VAULTS IN THE TOWNS OF MIDDLETON AND CONNECT ELEC. SYSTEM WITH DAIRYLAND POWER COOP |
| 83/09/27 5070-CE-000002 RICHLAND CENTER ELECTRIC UTILITY PUBLIC UTILITY, FOR AUTHORITY TO INTERCONNECT      | APPL. OF THE CITY OF RICHLAND CENTER AS AN ELEC.  |
| 83/09/27 6680-CE-000027 WP&L CO. CONNECTION & RELATED FACILITIES WITH THE CITY OF                           | WITH THE WI POWER & LIGHT CO. AUTH. TO INSTALL & PLACE IN SERVICE A 69-KV INTER-                  |
| 83/10/18 5780-CE-000004 STURGEON BAY UTILITIES  | RICHLAND CENTER, RICHLAND COUNTY REPLACEMENT OF SAWYER SUBSTATION TRANSFORMERS                    |
| 84/01/17 6680-CE-000028 WP&L CO. SERVICE TO CONST. A DRY ASH HANDLING SYSTEM FOR                            | APPL. OF WP&L FOR ITSELF AND AS AGENT FOR WIS. PUB  |
| 84/01/24 1200-CE-000003 CLINTONVILLE WATER & ELECTRIC PLANT   | UNITS 3 & 4 AT THE EDGEWATER GENERATING STATION CONSTRUCT ELEC. UTILITY PLANT ADDITIONS           |
| 84/02/16 3090-CT-000001 LA VALLE TELEPHONE COOPERATIVE, INC INC. FOR AUTHORITY TO CONSTRUCT PLANT ADDITIONS | APPLICATION OF THE LAVALLE TELEPHONE COOPERATIVE,   |
| 84/02/21 2560-CT-000001 HILLSBORO TELEPHONE COMPANY INC TO CONSTRUCT PLANT ADDITIONS AT ITS HILLSBORO       | AT ITS EXCHANGES IN LAVALLE AND CAZENOVIA. APPL. OF THE HILLSBORO TELEPHONE CP. FOR AUTHORITY     |
| 84/03/13 3270-CU-000001 MADISON GAS AND ELECTRIC COMPANY TO CONSTRUCT AND PLACE IN OPERATION AN ENERGY      | EXCHANGE.   |
| 84/04/02 1980-CE-000002 FENNIMORE WATER AND LIGHT PLANT   | APPL. OF MADISON GAS & ELECTRIC CO. FOR AUTHORITY   |
| 84/04/03 4220-CE-000036 NSP BUILDING ADDITION AND REMODELING OF NSP'S                                       | MANAGEMENT SUSTEM AND RELATED FACILITIES. REBUILD A MAJOR DISTRIBUTION FEEDER                     |
| 84/04/03 5530-CT-000002 SOLON SPRINGS TELEPHONE COMPANY CONSTRUCT PLANT FACILITIES NECESSARY FOR THE        | APPL. OF NSP FOR AUTHORITY TO CONSTRUCT A   |
| 84/04/17 6650-CG-000018 WISCONSIN GAS COMPANY GAS SERVICE IN THE TOWN OF EAU GALLE, ST. CROIX               | EXISTING OPERATIONS BUILDING LOCATED IN APPL. OF SOLON SPRINGS TEL. CO. FOR AUTHORITY TO          |
| 84/04/17 6650-CG-000019 WISCONSIN GAS COMPANY METER READING DATA COLLECTION SYSTEM                          | CONVERSION TO ALL ONE-PARTY SERVICE. AUTHORITY TO CONSTRUCT FACILITIES & RENDER NATURAL           |
| 84/04/17 6670-CG-000008 WISCONSIN NATURAL GAS COMPANY IN THE CITY OF WAUKESHA, WAUKESHA COUNTY, WIS.        | COUNTY  |
| 84/04/20 6220-CE-000002 WATERLOO WATER AND ELECTRIC COMM STATION & ASSOCIATED TRANSMISSION & DISTRIBUTION   | AUTHORITY TO PURCHASE & PLACE IN OPERATION A  |
| 84/05/01 4220-CG-000002 NORTHERN STATES POWER COMPANY UTILITY, FOR AUTHORITY TO PROVIDE NATURAL GAS         | AUTHORITY TO CONSTRUCT A SERVICE CENTER BUILDING  |
| 84/05/01 6650-CG-000020 WISCONSIN GAS COMPANY PLEASANT VALLEY ROAD IN THE TOWNS OF JACKSON &                | APPL. FOR AUTH. TO CONST. A NEW DISTRIBUTION SUB-   |
| 84/05/17 1850-CE-000001 ELROY MUN WATER AND ELECTRIC UTILIT   | LINE ADDITIONS BY THE CITY OF WATERLOO APPL. OF NORTHERN STATES POWER CO., AS GAS PUBLIC          |
| 84/05/22 6680-CG-000027 WP&L CO. LKOWVILLE, OSTEGO, WYOCENA, TAYCHEEDAH, FOND DU                            | SERVICE IN AN AREA ANNEXED TO THE CITY OF AUTHORITY TO REPLACE 12-INCH STEEL GAS MAIN ON          |
| 84/06/05 6690-CE-000028 WISCONSIN PUBLIC SERVICE CORPORATIO SERVICE BUILDING IN THE CITY OF ANTIGO...       | POLK, WASHINGTON COUNTY, WISCONSIN TRANSMISSION, SUBSTATION & DISTRIBUTION PROJECT                |
| 84/06/21 4340-CE-000002 OCONOMOWOC UTILITIES FACILITIES IN DOWNTOWN AREA.                                   | OPERATE AS A GAS UTIL. IN W. BARABOO, ARLINGTON,  |
| 84/06/28 5045-CW-000001 RIB MOUNTAIN SAN. DIST. DIST., MARATHON CNTY, FOR AUTH. TO CONSTRUCT A              | LAC, ST. MARIE, MOSCOW, LEMONWEIR, LINDINA, HILLS-  |
| 84/07/05 4220-CE-000041 NSP CLOSED INTERCONNECTION BETWEEN NSP & DAIRYLAND                                  | APPL. OF WPSC...FOR AUTH TO CONSTRUCT A DISTRICT  |
|   | SECOND PHASE OF UNDERGROUND CONVERSION OF ELECT.  |
|   | APPL. OF THE TWN. OF RIB MT., RIB MT. SANITARY  |
|   | WATER SUPPLY SYSTEM AND OPERATE AS A WATER  |
|   | APPL. OF NSP FOR AUTHORITY TO MAKE A NORMALLY   |
|   | POWER COOP. TO BE IDENTIFIED AS THE ANDERSEN  |

PUBLIC SERVICE COMMISSION  
 ALL CONSTRUCTION ORDERS ISSUED FOR THE 1983-1985 BIENNIUM  
 DOCKET LIST BY ORDER DATE

01/17/86

|          |                |  |   |
|----------|----------------|--|---|
| 84/08/07 | 3270-CG-000010 | MADISON GAS AND ELECTRIC COMPANY UTIL., FOR AUTH. TO CONST. 7,100 FT OF 12 IN. GAS     | APPL. OF MAD. GAS & ELEC. CO., AS A GAS PUBLIC  |
| 84/08/07 | 6630-CE-000039 | WISCONSIN ELECTRIC POWER COMPANY & INSTALL SUBSTATION & LINE FACILITIES IN THE CIT-    | MAIN, TWO REGULATOR MANHOLES AND ONE VALVE MANHOLE<br>APPL. FOR AUTHORITY TO CONSTRUCT A NEW SUBSTATION |
| 84/08/09 | 5050-CE-000100 | RICE LAKE MUN WATER & ELECTRIC UTIL  | IES OF ST. FRANCIS, OAK CREEK, & MILWAUKEE, ALL IN COLAN BLVD. FEEDER RE-BUILD                          |
| 84/08/23 | 6690-CE-000101 | WISCONSIN PUBLIC SERVICE CORPORATIO (RCCA) FOR KEWAUNEE NUCLEAR POWER PLANT            | PURCHASE 31 ROD CLUSTER CONTROL ASSEMBLIES  |
| 84/08/28 | 6630-CE-000040 | WEPCO CONDITIONING SYSTEM, OPACITY MONITORS & UPGRADED                                 | AUTH. TO INSTALL & PLACE IN OPERATION A FLUE GAS  |
| 84/09/13 | 1070-CT-000003 | CHEQUAMEGON TELEPHONE COOP INC TIVE, INC FOR AUTHORITY TO CONSTRUCT PLANT ADDI-        | PRECIPITATOR CONTROLS IN THE VALLEY POWER PLANT<br>APPLICATION OF THE CHEQUAMEGON TELEPHONE COOPERA-    |
| 84/09/18 | 6690-CE-000100 | WISCONSIN PUBLIC SERVICE CORPORATIO SERVICE BLDG. IN WABENO                            | TIONS AT BARNES, CABLE, DRUMMOND, GRANGVIEW, IRON<br>CONSTRUCT & PLACE IN OPERATION A DISTRICT          |
| 84/10/02 | 5740-CE-000100 | STOUGHTON MUNICIPAL ELECTRIC UTILIT FROM AAKER RD. TO THE VICINITY OF INDUSTRIAL       | AUTH. TO CONSTRUCT A NEW 12.47 KV TRUNK CIRCUIT   |
| 84/10/09 | 4220-CE-000040 | NSP DAIRYLAND POWER COOP. TO BE IDENTIFIED AS THE                                      | PARK NORTH<br>MAKE AN ADDITIONAL NORMALLY CLOSED INTERCON. WITH   |
| 84/10/11 | 1090-CT-000003 | CHIBARDUN TELEPHONE COOPERATIVE INC PRAIRIE FARM, RIDGELAND & SAND CREEK               | LONDON INTERCONNECTION LOCATED IN EAU CLAIRE CNTY.<br>PLANT ADDITIONS IN ALMENA, CAMERON, DALLAS,       |
| 84/10/25 | 6040-CT-000001 | UNIVERSAL TEL CO OF NORTHERN WIS IN AUTHORITY TO CONSTRUCT PLANT FACILITIES NECESSARY  | APPL. OF UNIVERSAL TEL CO OF NORTHERN WI, INC. FOR  |
| 84/11/01 | 6650-CG-000100 | WISCONSIN GAS COMPANY MAIN OFFICE BLDG. IN MILW.                                       | FOR THE CONVERSION TO ALL ONE-PARTY SERVICE AT THE<br>AUTH. TO OBTAIN & INSTALL A MAIN COMPUTER IN THE  |
| 84/11/15 | 6130-CE-000100 | VIOLA MUN WATER AND ELECTRIC UTILIT ELECTRICAL CIRCUIT ALONG STH 131 FROM CENTRAL      | REBUILDING OF THE SOUTH THREE-PHASE OVERHEAD  |
| 84/11/20 | 6090-CT-000002 | VERNON TELEPHONE COOPERATIVE TRUCT PLANT ADDITIONS AT ITS EXCHANGES IN DESOTO          | STREET TO THE HIGH SCHOOL<br>APPL. OF VERNON TELEPHONE COOP FOR AUTH. TO CONS-                          |
| 84/12/04 | 1230-CT-000001 | COCHRANE COOPERATIVE TELEPHONE CO PANY FOR AUTH. TO CONSTRUCT PLANT ADDITIONS AT       | GENOA, LIBERTY POLE, LAFARGE, READSTOWN, VIOLA,<br>APPL. OF THE COCHRANE COOPERATIVE TELEPHONE COM-     |
| 84/12/11 | 4220-CE-000038 | NSP 161KV (SEVEN MILE) SUBSTATION AND REBUILD ONE                                      | ITS EXCHANGES IN COCHRANE & WAUMANDEE<br>APPL. OF NSP FOR AUTHORITY TO CONSTRUCT A NEW                  |
| 84/12/13 | 6650-CG-000101 | WISCONSIN GAS COMPANY DER SERVICE TO FORT MCCOY  | EXISTING 69 KV LINE IN THE CITY OF EAU CLAIRE,<br>AUTHORITY TO CONSTRUCT NECESSARY FACILITIES & REN-    |
| 84/12/20 | 6690-CE-000102 | WISCONSIN PUBLIC SERVICE CORPORATIO NUCLEAR POWER PLANT                                | AUTHORITY TO REPLACE CONDENSER TUBING AT KEWAUNEE   |
| 85/01/15 | 6680-CG-000100 | WISCONSIN POWER AND LIGHT COMPANY THRU 4, TN. OF SUMPTER & CONST. NECESSARY FACIL-     | AUTH TO RENDER NAT'L GAS SERVICE IN SECTIONS 3  |
| 85/01/31 | 0210-CE-000100 | ARCADIA MUN LIGHT AND WATER UTILITY ELECTRICAL GENERATING UNIT                         | ITIES FOR INITIAL SERVICE TO BADGER ARMY PLANT &<br>PURCHASE AND INSTALL AN ADDITIONAL DIESEL ENGINE    |
| 85/02/12 | 1140-CG-000100 | CITY GAS COMPANY OF ANTIGO TOWN OF NEVA, LANGLADE COUNTY                               | OPERATE AS A NATURAL GAS PUBLIC UTILITY IN THE  |
| 85/03/05 | 5350-CE-000100 | SHAWANO MUN WATER & ELECTRIC UTILIT MISCELLANEOUS IMPROVEMENTS TO THE ELECTRIC UTILITY | PURCHASE AND INSTALL A COMPUTER SYSTEM AND FOR  |
| 85/03/12 | 1015-CT-000100 | CENCOM OF WISCONSIN, INC. CUMBERLAND AND CRIVITZ OFFICES TO DIGITAL                    | CONSTRUCTION AUTHORITY FOR THE CONVERSION OF  |
| 85/03/28 | 6680-CG-000101 | WISCONSIN POWER AND LIGHT COMPANY SHOP AT NORTHERN AREA, FOND DU LAC, WISCONSIN        | AUTHORITY TO CONSTRUCT AND OPERATE A GAS METER  |
| 85/03/28 | 6690-CE-000103 | WISCONSIN PUBLIC SERVICE CORPORATIO CAR COAL UNLOADING FACILITY & RELATED FACILITIES   | AUTHORITY TO PURCHASE & PLACE IN OPERATION A RAIL-  |

PUBLIC SERVICE COMMISSION  
 ALL CONSTRUCTION ORDERS ISSUED FOR THE 1983-1985 BIENNIUM  
 DOCKET LIST BY ORDER DATE

01/17/86

|          |                |   |  |
|----------|----------------|---|--|
| 85/04/23 | 5490-CT-000100 | SIREN TELEPHONE COMPANY INCORPORATE EXCHANGE AREA                                     | AUTH TO CONSTRUCT PLANT ADDITIONS AT SIREN   |
| 85/04/25 | 5040-CT-000100 | RIB LAKE TELEPHONE COMPANY RIB LAKE EXCHANGE  | AUTHORITY TO CONSTRUCT PLANT ADDITIONS AT ITS  |
| 85/04/30 | 6630-CE-000101 | WISCONSIN ELECTRIC POWER COMPANY IGNITION SYSTEM FOR UNITS 1 AND 2 AT PLEASANT        | INSTALL AND PLACE IN OPERATION A NATURAL GAS   |
| 85/05/09 | 1570-CE-000004 | DEERFIELD MUN WATER & ELECTRIC UTIL   | PRAIRIE POWER PLANT LOCATED IN THE TOWN OF<br>CONSTRUCT NEW SUBSTATION   |
| 85/05/21 | 0460-CE-000100 | BENTON MUN WATER AND ELECTRIC UTIL CONSTRUCTION OF VARIOUS ELECTRICAL SYSTEM IMPROVE- | ELECTRICAL SYSTEM CONVERSION FROM 4.16/2.4 KV AND  |
| 85/06/11 | 3690-CT-000100 | MILLTOWN MUTUAL TELEPHONE COMPANY TO CONSTRUCT PLANT ADDITIONS AT ITS EXCHANGE IN     | MENTS & CONVERSION OF ITS DISTRIBUTION LINE<br>APPL. OF MILLTOWN MUTUAL TELEPHONE CO. FOR AUTH.                  |
| 85/06/11 | 4070-CT-000100 | NELSON TELEPHONE COOPERATIVE. NELSON, ARKANSAS AND DURAND EXCHANGES                   | FOX CREEK & MILLTOWN<br>OUTSIDE PLANT CONSTRUCTION AT THE GILMANTON,   |
| 85/06/11 | 4210-CT-000100 | NORTHEAST TELEPHONE COMPANY CONSTRUCT PLANT ADDITIONS AT ITS EXCHANGE IN              | APPL. OF NORTHEAST TELEPHONE CO. FOR AUTHORITY TO  |
| 85/06/11 | 5210-CT-000100 | ST CROIX TELEPHONE COMPANY STRUCT PLANT ADDITIONS AT ITS EXCHANGE IN NEW              | PULASKI<br>APPL. OF ST. CROIX TELEPHONE CO. FOR AUTH. TO CON-  |
| 85/06/18 | 2520-CT-000100 | HEADWATERS TELEPHONE COMPANY CAMP, ELCHO, AND PELICAN LAKE EXCHANGES                  | RICHMOND<br>NEW DIGITAL CENTRAL OFFICE EQUIPMENT FOR SUGAR   |
| 85/06/18 | 6630-CE-000105 | WISCONSIN ELECTRIC POWER COMPANY THIRTY-SEVENTH STREET SUBSTATION TO 13.2V/7.62KV,    | CONVERT THE 3.81/2.2 KV LOAD SERVED FROM THE   |
| 85/06/25 | 6680-CE-000102 | WISCONSIN POWER AND LIGHT COMPANY INTERCONNECTIONS BETWEEN WISCONSIN POWER & LIGHT    | IN THE CITY OF MILWAUKEE<br>PROPOSED CONSTRUCTION OF FIVE SEPARATELY LOCATED<br>AND DAIRYLAND POWER COOPERATIVE. |

PUBLIC SERVICE COMMISSION  
ALL DEPRECIATION ORDERS ISSUED FOR THE 1983-1985 BIENNIUM  
DOCKET LIST BY ORDER DATE

01/21/86

|  |  |
|--|--|
| 84/01/17 1970-DT-000003 FENNIMORE TELEPHONE COMPANY<br>A TELEPHONE PUBLIC UTILITY FOR CERTIFICATION OF<br>DEPRECIATION RATES                 | APPLICATION OF THE FENNIMORE TELEPHONE COMPANY AS  |
| 84/01/17 2360-DU-000001 GREENDALE WATER AND SEWER UTILITY<br>CERTIFICATION OF DEPRECIATION RATES   | APPLICATION OF THE CITY OF GREENDALE...FOR CERTI-  |
| 84/01/17 2920-DW-000001 LA CROSSE MUNICIPAL WATER UTILITY<br>OF DEPRECIATION RATES   | APPL. OF THE CITY OF LA CROSSE...FOR CERTIFICATION |
| 84/01/17 2930-DT-000001 CENTURY TELEPHONE OF WIS., INC.<br>TELEPHONE PUBLIC UTILITY FOR CERTIFICATION OF<br>DEPRECIATION RATES.              | APPL. OF CENTURY TELEPHONE OF WISCONSIN, INC. AS A |
| 84/01/17 3970-DT-000002 MOUNT VERNON TELEPHONE COMPANY<br>PUBLIC UTILITY FOR CERTIFICATION OF DEPRECIATION<br>RATES.                         | APPL. OF THE MOUNT VERNON TEL. CO. AS A TEL.       |
| 84/01/17 5370-DW-000001 SHEBOYGAN MUNICIPAL WATER UTILITY<br>WATER UTILITY FOR CERTIFICATION OF DEPRECIATION<br>RATES.                       | APPL. OF THE CITY OF SHEBOYGAN AS A MUNICIPAL      |
| 84/01/17 5490-DT-000001 SIREN TELEPHONE COMPANY INCORPORATE<br>UTILITY FOR CERTIFICATION OF DEPRECIATION RATES.                              | APPL. OF THE SIREN TEL. CO. AS A TEL. PUBLIC       |
| 84/01/31 0450-DT-000002 BELMONT TELEPHONE COMPANY  | CERTIFICATION OF DEPRECIATION RATES                |
| 84/01/31 0960-DT-000001 CASCO TELEPHONE COMPANY  | CERTIFICATION OF DEPRECIATION RATES                |
| 84/01/31 1460-DT-000002 CUBA CITY TELEPHONE EXCHANGE COMPAN  | CERTIFICATION OF DEPRECIATION RATES                |
| 84/01/31 3270-DU-000001 MADISON GAS AND ELECTRIC COMPANY<br>FOR CERTIFICATION OF DEPRECIATION RATES  | APPL. OF MG&E AS A GAS & ELECTRIC PUBLIC UTILITY   |
| 84/01/31 4860-DT-000003 INDIANHEAD TELEPHONE CO.<br>PUBLIC UTILITY FOR CERTIFICATION OF DEPRECIATION<br>RATES                                | APPL. OF THE INDIANHEAD TEL. CO AS A TELEPHONE     |
| 84/02/09 5850-DT-000001 TENNEY TELEPHONE COMPANY<br>UTILITY FOR CERTIFICATION OF DEPRECIATION RATES.   | APPL. OF TENNEY TEL. CO. AS A TELEPHONE PUBLIC     |
| 84/02/16 3310-DT-000003 MANAWA TELEPHONE COMPANY, INC<br>PUBLIC UTILITY FOR CERTIFICATION OF DPRECIATION<br>RATES                            | APPL. OF THE MANAWA TELEPHONE COMPANY AS A TEL.    |
| 84/02/21 4210-DT-000004 NORTHEAST TELEPHONE COMPANY<br>TELEPHONE PUBLIC UTILITY FOR CERTIFICATION OF<br>DEPRECIATION RATES.                  | APPL. OF THE NORTHEAST TELEPHONE COMPANY AS A      |
| 84/04/03 0590-DT-000003 BLOOMER TELEPHONE COMPANY  | CERTIFICATION OF DEPRECIATION RATES                |
| 84/04/03 6300-DW-000001 WAUSAU MUNICIPAL WATER UTILITY<br>WATER UTILITY FOR CERTIFICATION OF DEPRECIATION<br>RATES                           | APPLICATION OF THE CITY OF WAUSAU AS A MUNICIPAL   |
| 84/04/24 3650-DT-000003 MID-PLAINS TELEPHONE INCORPORATED<br>TELEPHONE PUBLIC UTILITY FOR CERTIFICATION OF<br>DEPRECIATION RATES.            | APPLICATION OF MID-PLAINS TELEPHONE, INCORP. AS A  |
| 84/04/24 5530-DT-000004 SOLON SPRINGS TELEPHONE COMPANY<br>PUBLIC UTILITY FOR CERTIFICATION OF DEPRECIATION<br>RATES.                        | APPL. OF THE SOLON SPRINGS TELEPHONE CO AS A TEL.  |
| 84/04/24 6040-DT-000004 UNIVERSAL TEL CO OF NORTHERN WIS IN<br>WI., INC. AS A TEL. PUBLIC UTILITY FOR<br>CERTIFICATION OF DEPRECIATION RATES | APPLICATION OF THE UNIVERSAL TEL. CO. OF NORTHERN  |
| 84/05/03 1800-DU-000001 ELKHORN LIGHT AND WATER COMMISSION   | CERTIFICATION OF DEPRECIATION RATES                |
| 84/06/05 0170-DT-000003 AMHERST TELEPHONE COMPANY  | CERTIFICATION OF DEPRECIATION RATES                |
| 84/06/12 2740-DW-000001 JANESVILLE MUNICIPAL WATER UTILITY   | CERTIFICATION OF DEPRECIATION RATES                |
| 84/06/21 1910-DT-000002 FAIRWATER BRANDON ALTO TELEPHONE CO<br>COMPANY FOR CERTIFICATION OF DEPRECIATION RATES                               | APPLICATION OF FAIRWATER-BRANDON-ALTO TELEPHONE    |
| 84/06/26 4710-DT-000003 PLATTEVILLE TELEPHONE COMPANY<br>PUBLIC UTILITY FOR CERTIFICATION OF DEPRECIATION<br>RATES.                          | APPL. OF THE PLATTEVILLE TELEPHONE CO AS A TEL.    |

PUBLIC SERVICE COMMISSION  
 ALL DEPRECIATION ORDERS ISSUED FOR THE 1983-1985 BIENNIUM  
 DOCKET LIST BY ORDER DATE

01/21/86

|   |   |
|---|---|
| 84/06/28 3230-DT-000003 LUCK TELEPHONE COMPANY DEPRECIATION RATES   | APPL. OF LUCK TELEPHONE CO. FOR CERTIFICATION OF  |
| 84/07/05 4480-DW-000001 OSHKOSH MUNICIPAL WATER UTILITY UTILITY FOR CERTIFICATION OF DEPRECIATION RATES.                        | APPL. OF THE CITY OF OSHKOSH, AS A MUN. WATER     |
| 84/07/24 5040-DT-000002 RIB LAKE TELEPHONE COMPANY UTILITY FOR CERTIFICATION OF DEPRECIATION RATES.                             | APPL OF THE RIB LAKE TEL. CO AS A TEL. PUBLIC     |
| 84/07/24 5690-DW-000001 STEVENS POINT MUN WATER UTILITY - WATER UTILITY FOR CERTIFICATION OF DEPRECIATION RATES.                | APPL. OF THE CITY OF STEVENS POINT AS A MUN.      |
| 84/08/16 6380-DW-000001 WEST BEND MUNICIPAL WATER UTILITY CIPAL WATER UTILITY FOR CERTIFICATION OF DEPRECIATION RATES           | APPLICATION OF THE CITY OF WEST BEND AS A MUNI-   |
| 84/09/25 4090-DW-000001 NEW BERLIN MUNICIPAL WATER UTILITY PUBLIC UTILITY, FOR CERTIFICATION OF DEPRECIATION RATES.             | APPL. OF THE CITY OF NEW BERLIN, AS A WATER       |
| 84/10/16 3320-DU-000001 MANITOWOC PUBLIC UTILITY COMMISSION ELECTRIC AND WATER UTILITY FOR CERTIFICATION OF DEPRECIATION RATES  | APPL. OF THE CITY OF MANITOWOC AS A MUNICIPAL     |
| 84/10/23 3560-DW-000001 MENASHA ELECTRIC & WATER UTILITY CERTIFICATION OF DEPRECIATION RATES                                    | APPL. OF CITY OF MENASHA, AS A WATER UTILITY, FOR |
| 84/10/25 3790-DT-000003 MONDOVI TELEPHONE COMPANY TELEPHONE PUBLIC UTILITY FOR CERTIFICATION OF DEPRECIATION RATES.             | APPL. OF THE MONDOVI TELEPHONE COMPANY AS A       |
| 84/11/06 4160-DT-000002 NIAGARA TELEPHONE COMPANY PUBLIC UTILITY FOR CERTIFICATION OF DEPRECIATION RATES.                       | APPL. OF THE NIAGARA TEL. CO. AS A TELEPHONE      |
| 84/11/13 6340-DT-000001 WAYSIDE TELEPHONE COMPANY   | CERTIFICATION OF DEPRECIATION RATES               |
| 84/11/20 2050-DT-000003 FORESTVILLE TELEPHONE COMPANY, INC  | CERTIFICATION OF DEPRECIATION RATES               |
| 84/12/04 5560-DT-000002 SOMERSET TELEPHONE COMPANY, INC UTILITY FOR CERTIFICATION OF DEPRECIATION RATES.                        | APPL. OF THE SOMERSET TEL. CO AS A TEL PUBLIC     |
| 84/12/13 1000-DU-000001 CEDARBURG LIGHT AND WATER COMMISSIO ELECTRIC AND WATER UTILITY FOR CERTIFICATION OF DEPRECIATION RATES. | APPLICATION OF THE CITY OF CEDARBURG AS A MUN.    |
| 84/12/18 6720-DT-000002 WISCONSIN BELL, INC. RATES  | APPLICATION FOR CERTIFICATION OF DEPRECIATION     |
| 84/12/20 6650-DG-000100 WISCONSIN GAS COMPANY   | CERTIFICATION OF DEPRECIATION RATES               |
| 85/01/17 2420-DT-000002 HAGER CITY TELEPHONE COMPANY PUBLIC UTILITY FOR CERTIFICATION OF DEPRECIATION RATES.                    | APPL. OF THE HAGER CITY TEL. CO AS A TELEPHONE    |
| 85/03/07 6320-DW-000001 WAUWATOSA MUNICIPAL WATER UTILITY WATER PUBLIC UTILITY FOR CERTIFICATION OF DEPRECIATION RATES.         | APPL. OF THE CITY OF WAUWATOSA AS A MUNICIPAL     |
| 85/03/12 1410-DT-000003 CRANDON TELEPHONE COMPANY   | CERTIFICATION OF DEPRECIATION RATES               |
| 85/04/30 6250-DT-000002 WAUNAKEE TELEPHONE COMPANY INC PHONE PUBLIC UTILITY FOR CERTIFICATION OF DEPRECIATION RATES             | APPLICATION OF THE WAUNAKEE TEL. CO. AS A TELE-   |
| 85/05/02 6700-DU-000001 WISCONSIN RAPIDS WATERWORKS & LIGHT OF DEPRECIATION RATES   | APPL. OF CITY OF WIS. RAPIDS...FOR CERTIFICATION  |
| 85/05/21 0300-DT-000002 BADGER STATE TELEPHONE COMPANY, INC   | CERTIFICATION OF DEPRECIATION RATES               |
| 85/05/21 1020-DT-000003 CENTRAL STATE TELEPHONE COMPANY   | CERTIFICATION OF DEPRECIATION RATES               |
| 85/05/21 2390-DT-000002 GREENWOOD TELEPHONE COMPANY   | CERTIFICATION OF DEPRECIATION RATES               |
| 85/05/21 3660-DT-000003 MIDWAY TELEPHONE COMPANY PUBLIC UTILITY FOR CERTIFICATION OF DEPRECIATION RATES.                        | APPL. OF THE MIDWAY TELEPHONE CO. AS A TELEPHONE  |

PUBLIC SERVICE COMMISSION  
ALL DEPRECIATION ORDERS ISSUED FOR THE 1983-1985 BIENNIUM  
DOCKET LIST BY ORDER DATE

01/21/86

|                         |   |  |
|-------------------------|---|--|
| 85/05/21 4340-DU-000001 | OCONOMOWOC UTILITIES<br>ELECTRIC UTILITY FOR CERTIFICATION OF<br>DEPRECIATION RATES.                    | APPL. OF THE CITY OF OCONOMOWOC AS A WATER AND |
| 85/06/25 3010-DT-000003 | LAKESHORE TELEPHONE COMPANY<br>PUBLIC UTILITY FOR CERTIFICATION OF DEPRECIATION<br>RATES                | APPL. OF THE LAKESHORE TEL. CO. AS A TELEPHONE |
| 85/06/25 4310-DU-000001 | OAK CREEK MUNICIPAL WATER<br>WATER AND SEWER PUBLIC UTILITY FOR CERTIFICATION<br>OF DEPRECIATION RATES. | APPL. OF THE CITY OF OAK CREEK AS A MUNICIPAL  |
| 85/06/25 5800-DT-000100 | SULLIVAN TELEPHONE COMPANY  | DEPRECIATION RATES                             |

PUBLIC SERVICE COMMISSION  
ALL INQ & INVEST ORDERS ISSUED FOR THE 1983-1985 BIENNIUM  
DOCKET LIST BY ORDER DATE

01/21/86

|          |                |  |  |
|----------|----------------|--|--|
| 84/03/06 | 3900-TI-000001 | MOSINEE TELEPHONE COMPANY<br>SERVICE)  | CHESTER WEYER VS. MOSINEE TEL. CO. (CLASS OF       |
| 84/09/18 | 5800-TI-000100 | SULLIVAN TELEPHONE COMPANY<br>THE RATES OF SULLIVAN TELEPHONE CO.  | INVESTIGATION OF THE MOTION OF THE COMMISSION IN   |
| 84/10/11 | 0005-UI-000017 | GAS, ELECTRIC, WATER & SEWER UTILS.<br>LEMS, RELATED RULES & UTILITY PRACTICES OF GAS,<br>ELECTRIC, WATER & SEWER UTILITIES                  | GENERIC INVESTIGATION OF CONSUMER SERVICE PROB-    |
| 84/11/13 | 9155-TI-000001 | THE WESTERN UNION TELEGRAPH COMPANY<br>THE WESTERN UNION TELEGRAPH CO. FOR AUTH. TO OFFER<br>INTEREXCHANGE SWITCHED VOICE TELECOMMUNICATIONS | INVESTIGATION OF ISSUES RELATED TO APPLICATION OF  |
| 85/02/19 | 4720-SI-000100 | PLEASANT PARK UTILITY COMPANY INC  | INVESTIGATION OF PRACTICES                         |
| 85/03/12 | 3650-TI-000100 | MID-PLAINS TELEPHONE INCORPORATED<br>INTO ITS RATES & CHARGES  | INVESTIGATION ON MOTION OF MID-PLAINS TEL. INC.    |
| 85/04/08 | 6720-TI-000003 | WISCONSIN BELL, INC.<br>THE RATES OF WISCONSIN BELL, INC   | INVESTIGATION ON THE MOTION OF THE COMMISSION IN   |
| 85/04/23 | 0005-TI-000100 | TELEPHONE UTILITIES<br>ITY & OBLIGATIONS WITH REGARD TO THE SUPERVISION<br>& REGULATION OF TELECOMMUNICATIONS SERVICES UNDER                 | INVESTIGATION OF ISSUES RELATED TO PSC'S AUTHOR-   |
| 85/04/23 | 3650-TI-000002 | MID-PLAINS TELEPHONE INCORPORATED<br>NICATIONS CONTRACTORS ASSOCIATION INTO PRACTICES<br>AND ACTIVITIES OF MID-PLAINS TELEPHONE, INC.        | INVESTIGATION ON COMPLAINT OF WISCONSIN TELECOMMU- |
| 85/05/02 | 0850-TI-000100 | BURLINGTON BRIGHTON & WHEATLAND TEL<br>WHEATLAND TELEPHONE COMPANY   | MICHAEL LULLING VS. BURLINGTON, BRIGHTON &         |
| 85/05/21 | 5255-TI-000001 | SATELLITE BUSINESS SYSTEMS<br>OF SATELLITE BUSINESS SYSTEMS, INC.  | INVESTIGATION INTO THE STATUS AND CLASSIFICATION   |

PUBLIC SERVICE COMMISSION  
ALL PURCHASE ORDERS ISSUED FOR THE 1983-1985 BIENNIUM  
DOCKET LIST BY ORDER DATE

01/21/86

|          |                |  |  |
|----------|----------------|--|--|
| 84/01/17 | 8077-TB-000001 | RADIO DISPATCH, INC.<br>CO, INC  | AUTH. TO PURCHASE ASSETS OF ALL CITY COMMUNICATION |
| 84/02/07 | 5810-EB-000002 | SUN PRAIRIE WATER & ELECTRIC UTILIT<br>ER & LT CO. FOR AUTHORITY TO BUY/SELL CERTAIN ELEC<br>DISTRIBUTION FACILITIES LOCATED WITHIN THE CITY | JOINT APPL. OF SUN PRAIRIE MUN. UTILITY AND WI POW |
| 84/04/12 | 2930-TB-000001 | CENTURY TELEPHONE OF WIS., INC.  | AUTH. TO PURCHASE PROPERTY FROM WIS. BELL, INC.    |
| 84/06/05 | 1800-EB-000001 | ELKHORN LIGHT AND WATER COMMISSION<br>DISTRIBUTION FACILITIES IN ELKHORN   | JOINT APPL WITH WEPKO TO BUY/SELL CERTAIN ELEC.    |
| 84/06/21 | 6720-TB-000028 | WISCONSIN BELL, INC.<br>SCRIBERS OF THE SOUTH FORK TELEPHONE COMPANY UPON<br>ABANDONMENT OF SERVICE FROM THE SOUTH FORK TELE-                | APPL. OF WBI TO PROVIDE TELEPHONE SERVICE TO SUB-  |
| 84/10/02 | 6680-EB-000100 | WISCONSIN POWER AND LIGHT COMPANY<br>HORICON FROM WEPKO TO WP&L  | TRANSFER ELECTRIC SERVICE OF DANIEL BACKHAUS OF    |
| 84/10/23 | 0650-EB-000100 | BOSCOBEL (MUNICIPAL) UTILITIES   | BUY TRANSMISSION FACILITIES FROM WP&L              |
| 85/01/31 | 7010-TB-000100 | SCHNEIDER COMMUNICATIONS<br>FOR FULL TITLE)  | SCHNEIDER COMM. TO BUY MIDCO-TEL (SEE APPLICATION  |
| 85/01/31 | 7010-TB-000101 | SCHNEIDER COMMUNICATIONS<br>FULL TITLE)  | AUTHORITY TO PURCHASE COM-TEC (SEE APPLICATION FOR |
| 85/03/25 | 6680-EB-000101 | WISCONSIN POWER AND LIGHT COMPANY<br>THE VILLAGE OF DEERFIELD  | TO ACQUIRE AND OPERATE PUBLIC UTILITY ASSETS OF    |



PUBLIC SERVICE COMMISSION  
ORDERS ISSUED FOR THE 1983-1985 BIENNIUM  
DOCKET LIST BY ORDER DATE

01/21/86

|   |  |
|---|--|
| 84/12/04 3320-RE-000100 MANITOWOC PUBLIC UTILITY COMMISSION<br>AS AN ELECTRIC PUBLIC UTILITY, FOR AUTHORITY TO<br>AMEND ITS ELECTRIC EXTENSION RULES.             | APPL. OF THE CITY OF MANITOWOC, MANITOWOC COUNTY,  |
| 85/03/12 4740-RE-000100 PLYMOUTH UTILITIES<br>PUBLIC UTIL., FOR AUTH TO REVISE ITS ELECTRIC<br>EXTENSION RULES  | APPL OF PLYMOUTH, SHEBOYGAN CNTY, AS AN ELEC.      |
| 85/03/19 6220-RE-000100 WATERLOO WATER AND ELECTRIC COMM<br>PUBLIC UTILITY, FOR AUTH TO REVISE ITS ELECTRIC<br>EXTENSION RULES                                    | APPL OF WATERLOO, JEFFERSON CNTY, AS AN ELECTRIC   |
| 85/03/25 2040-RE-000100 FOOTVILLE WATER AND ELECTRIC COMM<br>AN ELECTRIC PUBLIC UTILITY, FOR AUTH. TO REVISE<br>ITS ELECTRIC EXTENSION RULES                      | APPL. OF THE VILLAGE OF FOOTVILLE, ROCK COUNTY, AS |
| 85/03/25 5510-RE-000100 SLINGER UTILITIES<br>ELEC PUBLIC UTILITY, FOR AUTH TO REVISE ITS ELEC.<br>EXTENSION RULES   | APPL OF VILL OF SLINGER, WASHINGTON CNTY, AS AN    |
| 85/04/04 5760-RE-000100 STRATFORD MUN WATER & ELECTRIC UTIL<br>ELEC. PUBLIC UTILITY, FOR AUTH. TO REVISE ITS<br>ELECTRIC EXTENSION RULES                          | APPL OF VILL OF STRATFORD, MARATHON CNTY, AS AN    |
| 85/04/04 5990-RE-000100 TWO RIVERS WATER & ELECTRIC UTILITY<br>PUBLIC UTIL. FOR AUTH TO REVISE ITS ELECTRIC<br>EXTENSION RULES                                    | APPL OF TWO RIVERS, MANITOWOC CNTY AS AN ELECTRIC  |
| 85/04/11 1040-RE-000100 CENTURIA MUNICIPAL ELECTRIC UTILITY<br>AN ELECTRIC PUBLIC UTILITY, FOR AUTH. TO REVISE<br>ITS EXTENSION RULES                             | APPL. OF THE VILLAGE OF CENTURIA, POLK COUNTY, AS  |
| 85/04/11 1330-RE-000100 CONSOLIDATED WATER POWER COMPANY<br>TY, AS AN ELECTRIC PUBLIC UTILITY, FOR AUTH. TO<br>REVISE ITS ELECTRIC EXTENSION RULES                | APPL. OF CONSOLIDATED WATER POWER CO., WOOD COUN-  |
| 85/04/11 2950-RE-000100 LA FARGE MUNICIPAL ELECTRIC UTILITY<br>PUBLIC UTIL., FOR AUTH. TO REVISE ELEC. EXTEN-<br>SION RULES                                       | APPL. OF VILL. OF LAFARGE, VERNON CNTY, AS ELEC.   |
| 85/04/11 4530-RE-000100 PARDEEVILLE MUN. ELECTRIC UTILITY<br>ELECTIC PUBLIC UTILITY FOR AUTH TO REVISE ITS<br>ELEC. EXTENSION RULES                               | APPL OF VILL OF PARDEEVILLE, COLUMBIA CNTY AS AN   |
| 85/04/23 1490-RE-000100 CUMBERLAND MUNICIPAL UTILITY<br>AN ELECTRIC PUBLIC UTILITY, FOR AUTH. TO REVISE<br>ITS ELECTRIC EXTENSION RULES                           | APPL. OF THE CITY OF CUMBERLAND, BARRON COUNTY, AS |
| 85/05/21 1470-RE-000100 CUBA CITY WATER AND ELECTRIC UTILIT<br>COUNTIES, AS AN ELECTRIC PUBLIC UTILITY, FOR AUTH.<br>TO REVISE ITS ELECTRIC EXTENSION RULES       | APPL. OF CITY OF CUBA CITY, LAFAYETTE & GRANT      |
| 85/05/21 1850-RE-000100 ELROY MUN WATER AND ELECTRIC UTILIT<br>ELECTRIC PUBLIC UTILITY FOR AUTH. TO REVISE ITS<br>ELECTRIC EXTENSION RULES                        | APPL OF THE CITY OF ELROY, JUNEAU CNTY, AS AN      |
| 85/05/21 2510-RE-000100 HAZEL GREEN MUNICIPAL UTILITIES<br>COUNTIES, AS AN ELECTRIC PUBLIC UTILITY, FOR AUTH.<br>TO REVISE ITS ELECTRIC EXTENSION RULES           | APPL OF VILLAGE OF HAZEL GREEN, GRANT & LAFAYETTE  |
| 85/05/21 5380-RE-000100 SHEBOYGAN FALLS MUN WATER & ELECTRI<br>AS AN ELECTRIC PUBLIC UTILITY, FOR AUTH. TO REVISE<br>ITS ELECTRIC EXTENSION RULES                 | APPL. OF CITY OF SHEBOYGAN FALLS, SHEBOYGAN CNTY,  |
| 85/05/21 6760-RE-000100 WONEWOC MUN WATER & ELECTRIC UTILIT<br>AN ELECTRIC PUBLIC UTILITY, FOR AUTHORITY TO<br>REVISE ITS ELECTRIC EXTENSION RULES                | APPL. OF THE VILLAGE OF WONEWOC, JUNEAU CNTY, AS   |
| 85/06/04 1710-RE-000100 EAGLE RIVER LIGHT AND WATER DEPT<br>PUBLIC UTILITY, FOR AUTH. TO REVISE ITS ELECTRIC<br>EXTENSION RULES TO INCLUDE A CHARGE FOR AN UNDER- | APPL. OF EAGLE RIVER, VILAS CNTY, AS AN ELECTRIC   |
| 85/06/18 3420-RE-000100 MARSHFIELD WATER AND ELECTRIC DEPT<br>TIES, AS AN ELECTRIC PUBLIC UTILITY, FOR AUTH. TO<br>REVISE ITS ELECTRIC EXTENSION RULES            | APPL. OF CITY OF MARSHFIELD, WOOD & MARATHON COUN- |

PUBLIC SERVICE COMMISSION  
 ALL SERVICE ORDERS ISSUED FOR THE 1983-1985 BIENNIUM  
 DOCKET LIST BY ORDER DATE

01/21/86

|          |                |  |  |
|----------|----------------|--|--|
| 83/10/14 | 2180-TV-000011 | GENERAL TELEPHONE COMPANY OF WISC  | CUSTOMER SURVEY FOR PHELPS, LAND O'LAKES EXCHANGES |
| 83/10/14 | 3310-TV-000001 | MANAWA TELEPHONE COMPANY, INC  | TRAFFIC STUDY FOR MANAWA EXCHANGE                  |
| 84/01/06 | 2180-TV-000018 | GENERAL TELEPHONE COMPANY OF WISC<br>PLAIN, LONE ROCK & MAZOMANIE  | PETITION FOR EAS FROM ARENA EXCHANGE TO DODGEVILLE |
| 84/01/06 | 2180-TV-000019 | GENERAL TELEPHONE COMPANY OF WISC  | PETITION FOR EAS FROM MELROSE TO MINDORO           |
| 84/06/07 | 2180-TV-000015 | GENERAL TELEPHONE COMPANY OF WISC<br>EXCH.   | PETITION FOR EAS FROM SHIOCTON EXCH. TO NICHOLS    |
| 84/12/13 | 6690-GV-000003 | WISCONSIN PUBLIC SERVICE CORPORATIO<br>EMERGENCY ORDER IMPLEMENTING A NATURAL GAS CURL-<br>TAILMENT PLAN                               | APPLICATION OF WIS. PUBLIC SERVICE CORP. FOR AN    |
| 85/01/31 | 3270-GV-000003 | MADISON GAS AND ELECTRIC COMPANY<br>EMERGENCY ORDER IMPLEMENTING A NATURAL GAS<br>CURTAILMENT PLAN.                                    | APPL. OF MADISON GAS AND ELECTRIC COMPANY FOR AN   |
| 85/03/05 | 6650-GV-000003 | WISCONSIN GAS COMPANY<br>EMERGENCY ORDER IMPLEMENTING A NATURAL GAS<br>CURTAILMENT PLAN  | APPLICATION OF WISCONSIN GAS COMPANY FOR AN        |
| 85/03/12 | 2180-TV-000016 | GENERAL TELEPHONE COMPANY OF WISC<br>LACROSSE/WEST-SALEM   | PETITION FOR EAS FROM BANGOR EXCHANGE TO           |
| 85/03/14 | 2180-TV-000017 | GENERAL TELEPHONE COMPANY OF WISC<br>WEST SALEM  | PETITION FOR EAS FROM MINDORO TO LACROSSE/         |
| 85/04/09 | 5530-TV-000001 | SOLON SPRINGS TELEPHONE COMPANY<br>EAS FROM LAKE NEBAGAMON TO THE SUPERIOR-DULUTH<br>AREA.   | PETITION OF JAMES A. SPRINGSTEELE & 180 OTHERS FOR |
| 85/04/12 | 2180-TV-000013 | GENERAL TELEPHONE COMPANY OF WISC<br>ST. CLOUD   | PETITION FOR EAS BETWEEN MT. CALVARY &             |
| 85/04/16 | 4260-TV-000008 | NORTH-WEST TELEPHONE COMPANY<br>KWIATKOWSKI & APPROX 1,622 OTHERS FOR 1-WAY OPT.<br>MIL. METROPLAN SERV. FROM E. TROY, DOUSMAN & EAGLE | PET. OF MR. L. F. KRAUSE, MRS. N. DOERING & MRS. R |
| 85/05/21 | 6720-TV-000021 | WISCONSIN BELL, INC.<br>THE MAZOMANIE EXCHANGE TO THE MADISON AREA EX-<br>CHANGES  | PETITION OF WM SKINNER & 492 OTHERS FOR EAS FROM   |

PUBLIC SERVICE COMMISSION  
ALL STCKS & BNDS ORDERS ISSUED FOR THE 1983-1985 BIENNIUM  
DOCKET LIST BY ORDER DATE

01/21/86

|   |   |
|---|---|
| 83/07/14 6710-SB-000006 WISCONSIN SOUTHERN GAS COMPANY<br>NOTE OF PRINCIPAL AMOUNT NOT TO EXCEED \$400,000  | APPL. OF WSG, INC FOR AUTH. TO ISSUE A FIVE YEAR    |
| 83/08/26 3020-SB-000015 LAKE SUPERIOR DISTRICT POWER COMPAN<br>ISSUE AND HAVE OUTSTANDING DURING 1983 SHORT-TERM<br>NOTES NOT TO EXCEED \$3,000,000 PRINCIPAL AMOUNT.   | APPL. OF LAKE SUPERIOR DIST. POWER CO FOR AUTH. TO  |
| 83/09/13 6720-SB-000014 WISCONSIN BELL, INC.<br>AUTHORITY TO ISSUE NOT TO EXCEED 78,000 SHARES<br>OF ITS \$20 PAR VALUE COMMON STOCK                                    | APPLICATION OF WISCONSIN TELEPHONE COMPANY FOR      |
| 83/10/11 4220-SB-000012 NSP<br>HAVE OUTSTANDING DURING 1983 SHORT-TERM NOTES NOT<br>TO EXCEED \$30,000,000 PRINCIPAL AMOUNT.  | APPL OF NSP CO. OF WI FOR AUTHORITY TO ISSUE AND    |
| 84/01/17 3270-SB-000028 MADISON GAS AND ELECTRIC COMPANY<br>AUTHORITY TO ISSUE AND HAVE OUTSTANDING DURING 84<br>SHORT-TERM INDEBTNESS NOT TO EXCEED \$15,000,000       | APPL. OF MADISON GAS AND ELECTRIC CO. FOR           |
| 84/01/17 6680-SB-000022 WP&L CO.<br>TO EXCEED 1,200,000 SHARES OF ITS \$5 PAR VALUE<br>COMMON STOCK   | APPLICATION OF WP&L CO. FOR AUTHORITY TO ISSUE NOT  |
| 84/01/24 6050-SB-000006 URBAN TELEPHONE CORPORATION<br>ISSUE 455,082 SHARES OF ITS \$5.00 PAR VALUE<br>COMMON STOCK   | APPL. OF URBAN TELEPHONE CORP. FOR AUTH. TO         |
| 84/02/14 3020-SB-000016 LAKE SUPERIOR DISTRICT POWER COMPAN<br>SHORT TERM NOTES NOT TO EXCEED \$7,000,000<br>PRINCIPAL AMOUNT   | AUTHORITY TO ISSUE AND HAVE OUTSTANDING DURING '84  |
| 84/02/14 6680-SB-000023 WP&L CO.<br>SHORT-TERM INDEBTEDNESS NOT TO EXCEED \$47,000,000<br>PRINCIPAL AMOUNT  | AUTHORITY TO ISSUE & HAVE OUTSTANDING DURING 1984   |
| 84/02/21 4220-SB-000013 NSP<br>OUTSTANDING DURING 1984 SHORT-TERM NOTES NOT TO<br>EXCEED \$25,000,000 PRINCIPAL AMOUNT.   | APPL. OF NSP OF WI FOR AUTHORITY TO ISSUE AND HAVE  |
| 84/03/15 6690-SB-000023 WISCONSIN PUBLIC SERVICE CORPORATIO<br>\$30,000,000 PRINCIPAL AMOUNT OF 1ST MORTGAGE BONDS  | APPL. OF WPSC FOR AUTH. TO ISSUE & NOT TO EXCEED    |
| 84/03/15 6690-SB-000024 WISCONSIN PUBLIC SERVICE CORPORATIO<br>ING DURING 1984 SHORT-TERM INDEBTEDNESS NOT TO<br>EXCEED \$60,000,000 PRINCIPAL AMOUNT                   | APPL. OF WPSC FOR AUTH. TO ISSUE & HAVE OUTSTAND-   |
| 84/04/12 8077-SB-000001 RADIO DISPATCH, INC.<br>1,000 SHARES OF ITS NO PAR VALUE COMMON STOCK   | APPL. OF RADIO DISPATCH, INC FOR AUTH. TO ISSUE     |
| 84/06/05 6710-SB-000008 WISCONSIN SOUTHERN GAS COMPANY<br>OF ITS \$5 PAR VALUE COMMON STOCK   | APPL. OF WSG, INC FOR AUTH. TO ISSUE 20,000 SHARES  |
| 84/07/17 6640-SB-000005 WISCONSIN FUEL AND LIGHT COMPANY<br>AUTHORITY TO ISSUE 255,580 SHARES OF ITS \$10 PAR<br>VALUE COMMON STOCK                                     | APPLICATION OF WISCONSIN FUEL & LIGHT COMPANY FOR   |
| 84/08/09 6680-SB-000024 WISCONSIN POWER AND LIGHT COMPANY<br>OF ITS FIRST MORTGAGE BONDS  | ISSUE NOT TO EXCEED \$8,500,000 IN PRINCIPAL AMOUNT |
| 84/08/30 6720-SB-000015 WISCONSIN BELL, INC.<br>78,000 SHARES OF ITS \$20 PAR VALUE COMMON STOCK<br>(IN CONNECTION WITH THE FUNDING OF EMPLOYE STOCK                    | APPL. OF WBI FOR AUTH. TO ISSUE NOT TO EXCEED       |
| 84/10/16 6680-SB-000025 WP&L CO.<br>EXCEED \$35,000,000 IN PRINCIPAL AMOUNT OF ITS<br>FIRST MORTGAGE BONDS  | APPL. OF WP&L CO. FOR AUTHORITY TO ISSUE NOT TO     |
| 84/10/18 6680-SB-000011 WP&L CO.<br>SHARES OF COMMON STOCK (\$5 PAR VALUE)  | AUTHORITY TO ISSUE & SELL NOT TO EXCEED 1,500,000   |
| 84/11/13 1140-SB-000100 CITY GAS COMPANY OF ANTIGO<br>TERM NOTES PAYABLE & TO APPROVE AN AFFILIATED<br>INTEREST ARRANGEMENT   | AUTH TO ISSUE \$300,000 PRINCIPAL AMOUNT OF LONG-   |
| 84/11/20 5570-SB-000100 SOUTHEAST TELEPHONE CO OF WISC, INC<br>FOR AUTHORITY TO ISSUE 2,379 1/3 SHARES OF ITS<br>\$100.00 PAR VALUE COMMON STOCK                        | APPL. OF SOUTHEAST TELEPHONE COMPANY OF WISCONSIN   |
| 84/11/20 6680-SB-000020 WP&L CO.<br>IONAL 300,000 SHARES OF ITS COMMON STOCK, \$5 PAR<br>VALUE, PURSUANT TO ITS EMPLOYEE STOCK OWNERSHIP                                | APPL. OF WP&L FOR AUTH. TO ISSUE & SELL AN ADDIT-   |
| 84/12/18 6680-SB-000100 WISCONSIN POWER AND LIGHT COMPANY<br>COMMERCIAL PAPER OF UP TO \$72,100,000   | ISSUE AND HAVE OUTSTANDING SHORT-TERM NOTES AND     |
| 85/01/03 3020-SB-000100 LAKE SUPERIOR DISTRICT POWER COMPAN<br>\$8,000,000 PRINCIPAL IN 1985: APPROVAL OF LOANS BY<br>SHORT-TERM NOTES FROM ITS PARENT, NSP(MN), NOT TO | AUTH. TO ISSUE...SHORT-TERM NOTES NOT TO EXCEED     |
| 85/01/09 6680-SB-000102 WISCONSIN POWER AND LIGHT COMPANY<br>COMMERCIAL PAPER OF UP TO \$68,100,000 PRINCIPAL<br>AMOUNT   | ISSUE AND HAVE OUTSTANDING SHORT-TERM NOTES AND     |

PUBLIC SERVICE COMMISSION  
ALL STCKS & BNDS ORDERS ISSUED FOR THE 1983-1985 BIENNIUM  
DOCKET LIST BY ORDER DATE

01/21/86

|          |                |  |   |
|----------|----------------|--|---|
| 85/01/17 | 4660-SB-000100 | PIONEER POWER AND LIGHT COMPANY                  | APPL. OF PIONEER POWER & LIGHT CO. FOR AUTH. TO   |
|          |                | ISSUE LONG-TERM NOTES NOT TO EXCEED \$325,000    |   |
|          |                | PRINCIPAL AMOUNT                                 |   |
| 85/01/17 | 6410-SB-000100 | WESTFIELD MILLING AND ELECTRIC LT C              | APPLICATION OF WESTFIELD MILLING & ELECTRIC CO.   |
|          |                | FOR AUTHORITY TO ISSUE LONG-TERM NOTES NOT TO    |   |
|          |                | EXCEED \$175,000 PRINCIPAL AMOUNT                |   |
| 85/01/29 | 4220-SB-000100 | NORTHERN STATES POWER COMPANY                    | AUTHORITY TO ISSUE AND HAVE OUTSTANDING DURING    |
|          |                | 1985 SHORT-TERM NOTES NOT TO EXCEED \$22,000,000 |   |
|          |                | PRINCIPAL AMOUNT                                 |   |
| 85/02/19 | 5820-SB-000101 | SUPERIOR WATER LIGHT AND POWER CO                | ISSUE \$3,500,000 IN FIRST MORTGAGE BONDS         |
| 85/02/21 | 5820-SB-000100 | SUPERIOR WATER LIGHT AND POWER CO                | ISSUE SHORT-TERM NOTES NOT TO EXCEED \$3,500,000  |
|          |                | PRINCIPAL DURING 1985                            |   |
| 85/03/05 | 6710-SB-000100 | WISCONSIN SOUTHERN GAS COMPANY                   | AUTHORITY TO ISSUE 23,036 SHARES OF \$5 PAR VALUE |
|          |                | COMMON STOCK                                     |   |
| 85/04/04 | 4280-SB-000007 | NORTHWESTERN WISCONSIN ELECTRIC CO               | APPL. OF NORTHESTERN WI ELECTRIC CO FOR AUTHORITY |
|          |                | TO BORROW UP TO \$2,500,000 UNDER A REVOLVING    |   |
|          |                | CREDIT AND TERM LOAN AGREEMENT.                  |   |
| 85/05/23 | 3650-SB-000100 | MID-PLAINS TELEPHONE INCORPORATED                | APPL. OF MID-PLAINS TELEPHONE, INC. FOR AUTHORITY |
|          |                | TO ISSUE COMMON STOCK                            |   |
| 85/05/30 | 4280-SB-000100 | NORTHWESTERN WISCONSIN ELECTRIC CO               | AUTHORITY TO ISSUE NOT TO EXCEED \$600,000        |
|          |                | PRINCIPAL AMOUNT OF NOTES PAYABLE                |   |
| 85/06/06 | 4190-SB-000100 | NORTH CENTRAL POWER COMPANY INC                  | ISSUE NOT TO EXCEED \$900,000 PRINCIPAL AMOUNT OF |
|          |                | NOTES PAYABLE AND FOR APPROVAL OF AFFILIATED     |   |
|          |                | INTEREST TRANSACTION                             |   |
| 85/06/18 | 1940-SB-000100 | FARMERS INDEPENDENT TELEPHONE CO                 | AUTHORITY TO ISSUE 27,672 SHARES OF ITS \$20 PAR  |
|          |                | VALUE COMMON STOCK                               |   |
| 85/06/18 | 2970-SB-000100 | LAKEFIELD TELEPHONE COMPANY                      | AUTHORITY TO ISSUE 1,216 SHARES OF \$50 PAR VALUE |
|          |                | COMMON STOCK                                     |   |
| 85/06/18 | 3650-SB-000101 | MID-PLAINS TELEPHONE INCORPORATED                | ISSUE \$2,500,000 PRINCIPAL AMOUNT OF DEBENTURES  |
| 85/06/18 | 6650-SB-000100 | WISCONSIN GAS COMPANY                            | AUTHORITY TO ISSUE \$25,000,000 OF FIRST MORTGAGE |
|          |                | BONDS  |   |
| 85/06/25 | 2180-SB-000100 | GENERAL TELEPHONE COMPANY OF WISC                | AUTH. TO ISSUED A PROMISSORY NOTE NOT TO EXCEED   |
|          |                | \$20,000,000 PRINCIPAL AMOUNT                    |   |
| 85/06/25 | 6630-SB-000100 | WISCONSIN ELECTRIC POWER COMPANY                 | AUTHORITY TO ISSUE & HAVE OUTSTANDING AT ANY ONE  |
|          |                | TIME DURING 1985 SHORT-TERM NOTES & COMMERCIAL   |   |
|          |                | PAPER IN AMOUNTS NOT TO EXCEED \$170,000,000     |   |

|          |                |  |   |
|----------|----------------|--|---|
| 83/07/20 | 0005-EP-000003 | ADVANCE ELEC.(SYSTEMS)PLANNING<br>FILED WITH THE COMMISSION FOR REVIEW & APPROVAL<br>PURSUANT TO SECTION 196.491 WIS. STATUTES | ADVANCE PLANS FOR CONSTRUCTION OF FACILITIES AS   |
| 83/08/26 | 3020-UC-000001 | LAKE SUPERIOR DISTRICT POWER COMPAN  | COMPREHENSIVE ENERGY CONSERVATION PROGRAM         |
| 83/08/26 | 3270-UC-000001 | MADISON GAS AND ELECTRIC COMPANY   | COMPREHENSIVE ENERGY CONSERVATION PROGRAM         |
| 83/08/26 | 4220-UC-000001 | NORTHERN STATES POWER COMPANY  | COMPREHENSIVE ENERGY CONSERVATION PROGRAM         |
| 83/08/26 | 5820-UC-000001 | SUPERIOR WATER LIGHT AND POWER CO  | COMPREHENSIVE ENERGY CONSERVATION PROGRAM         |
| 83/08/26 | 6630-UC-000001 | WEPCO  | COMPREHENSIVE ENERGY CONSERVATION PROGRAM         |
| 83/08/26 | 6640-UC-000001 | WISCONSIN FUEL AND LIGHT COMPANY   | COMPREHENSIVE ENERGY CONSERVATION PROGRAM         |
| 83/08/26 | 6650-UC-000001 | WISCONSIN GAS COMPANY  | COMPREHENSIVE ENERGY CONSERVATION PROGRAM         |
| 83/08/26 | 6670-UC-000001 | WISCONSIN NATURAL GAS COMPANY  | COMPREHENSIVE ENERGY CONSERVATION PROGRAM         |
| 83/08/26 | 6680-UC-000001 | WISCONSIN POWER AND LIGHT COMPANY  | COMPREHENSIVE ENERGY CONSERVATION PROGRAM         |
| 83/08/26 | 6690-UC-000001 | WISCONSIN PUBLIC SERVICE CORPORATIO  | COMPREHENSIVE ENERGY CONSERVATION PROGRAM         |
| 83/08/26 | 6710-UC-000001 | WISCONSIN SOUTHERN GAS COMPANY   | COMPREHENSIVE ENERGY CONSERVATION PROGRAM         |
| 84/01/31 | 1015-TM-000001 | CENCOM OF WISCONSIN, INC.<br>INTO CENCOM OF WIS., INC.   | JOINT APPL OF WEYAUWEGA TEL CO FOR AUTH TO MERGE  |
| 84/01/31 | 6460-TM-000001 | WEYAUWEGA TEL DIV/CENCOM OF WI INC<br>TO MERGE INTO CENCOM OF WI., INC.  | JOINT APPLICATION OF WEYAUWEGA TEL. CO FOR AUTH.  |
| 84/02/21 | 0001-AC-000062 |  | RULES CONCERNING MANDATORY BUDGET BILLING         |
| 84/03/20 | 6725-RW-000018 | WISCONSIN VALLEY IMPROVEMENT CO.<br>PROVEMENT COMPANY FOR THE 6-MONTH PERIOD ENDING<br>12/31/83                                | TOLLS TO BE CHARGED BY THE WISCONSIN VALLEY IM-   |
| 84/03/22 | 8165-NC-000001 | MILWAUKEE TELEPHONE COMPANY<br>CONDUCT PUBLIC UTILITY BUSINESS IN MILWAUKEE,<br>OZAUKEE, WASHINGTON & WAUKESHA COUNTIES        | APPL. OF MILWAUKEE TELEPHONE CO. FOR AUTH. TO     |
| 84/06/21 | 1125-RW-000018 | CHIPPEWA AND FLAMBEAU IMPROVEMENT C  | TOLL CHARGES FOR SIX-MONTH PERIOD ENDING 12/31/83 |
| 84/07/05 | 0001-AC-000061 | TELEPHONE<br>PRACTICES OF TELEPHONE UTILITIES (RULE PORTION<br>OF 05-TI-6)   | RULES RELATING TO CONSUMER SERVICE PROBLEMS &     |
| 84/08/16 | 0001-AC-000059 |  | RULES REGARDING COST OF FUEL                      |
| 84/10/02 | 6725-RW-000100 | WISCONSIN VALLEY IMPROVEMENT CO.<br>IMPROVEMENT COMPANY FOR THE SIX-MONTH PERIOD<br>ENDING JUNE 30, 1984                       | TOLLS TO BE CHARGED BY THE WISCONSIN VALLEY       |
| 84/11/01 | 0001-AC-000045 | ALL NATURAL GAS UTILITIES<br>METERING  | RULES GOVERNING THE ACCURACY OF NATURAL GAS       |
| 84/11/01 | 0001-AC-000066 | ALL NATURAL GAS UTILITIES<br>AND PLACING IN OPERATION OF FACILITIES BY NATURAL<br>GAS UTILITIES                                | RULES GOVERNING THE CONSTRUCTION, INSTALLATION,   |
| 84/11/01 | 0001-AC-000067 | ALL NATURAL GAS UTILITIES<br>OPERATION & MAINTENANCE OF FACILITIES FOR THE<br>PRODUCTION, TRANSMISSION, DISTRIBUTION & UTILI-  | RULES & REGULATION GOVERNING THE CONSTRUCTION,    |
| 84/12/04 | 1125-RW-000100 | CHIPPEWA AND FLAMBEAU IMPROVEMENT C<br>IMPROVEMENT CO. FOR 6-MO. PERIOD ENDING 6/30/84   | TOLLS TO BE CHARGED BY THE CHIPPEWA & FLAMBEAU    |

ALL OTHER

PUBLIC SERVICE COMMISSION  
ORDERS ISSUED FOR THE 1983-1985 BIENNIUM  
DOCKET LIST BY ORDER DATE

01/21/86

|          |                |   |  |
|----------|----------------|---|--|
| 84/12/18 | 0001-AC-000068 | ADMINISTRATIVE CODE<br>HEATING SERVICE  | STANDARDS FOR CONVERSION TO GAS OR ELECTRIC SPACE- |
| 85/01/17 | 2705-NC-000001 | ISACOMM, INC.<br>CERTIFICATE OF PUBLIC CONVENIENCE AND NECESSITY TO<br>OFFER INTRASTATE TOLL SERVICE                                      | INVESTIGATION OF APPLICATION OF ISACOMM, INC. FOR  |
| 85/01/29 | 6360-DR-000100 | WEST ALLIS MUNICIPAL WATER UTILITY<br>AWARD - DISCOUNTED WATER BILLS FOR MUNICIPAL<br>EMPLOYEES   | DETERMINATION OF IMPLEMENTATION OF ARBITRATOR'S    |
| 85/03/05 | 0001-AC-000058 | SATISFY ARREARAGES  | RULES CONCERNING USE OF CUSTOMER DEPOSITS TO       |
| 85/03/28 | 6725-RW-000101 | WISCONSIN VALLEY IMPROVEMENT CO.<br>IMPROVEMENT COMPANY FOR THE SIX-MONTH PERIOD<br>ENDING DECEMBER 31, 1984                              | TOLLS TO BE CHARGED BY THE WISCONSIN VALLEY        |
| 85/04/18 | 6690-DR-000100 | WISCONSIN PUBLIC SERVICE CORPORATIO<br>SUBSIDIARY'S OWNERSHIP & OPERATION OF A BOILER<br>FOR THE GENERATION & SALE OF STEAM & ELECTRICITY | IN THE MATTER OF WIS. PUBLIC SERVICE CORP.--       |
| 85/05/02 | 0001-AC-000100 | SMALL TELEPHONE COMPANIES   | RATE INCREASES FOR SMALL TELEPHONE COMPANIES       |
| 85/05/02 | 0001-AC-000101 | TELEPHONE<br>CONNECTION OF LOCAL TELEPHONE SERVICE FOR FAILURE<br>TO PAY A TOLL BILL  | TO AMEND S. PSC 165.052(2)(E) RELATING TO DIS-     |
| 85/05/30 | 0001-AC-000103 | ELECTRIC UTILITIES<br>RETROACTIVE REFUND PROVISION  | SERVICE EXTENSION RULES FOR ELECTRIC UTILITIES--   |
| 85/06/25 | 4220-DR-000004 | NORTHERN STATES POWER COMPANY<br>DECLARATORY RULING AS TO THE PROVISION OF<br>THREE-PHASE ELECTRICAL SERVICE TO MARKQUART                 | PEPITION OF NORTHERN STATES POWER CO. FOR A        |