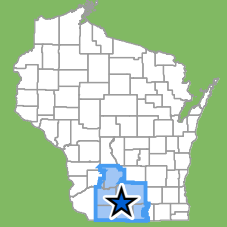


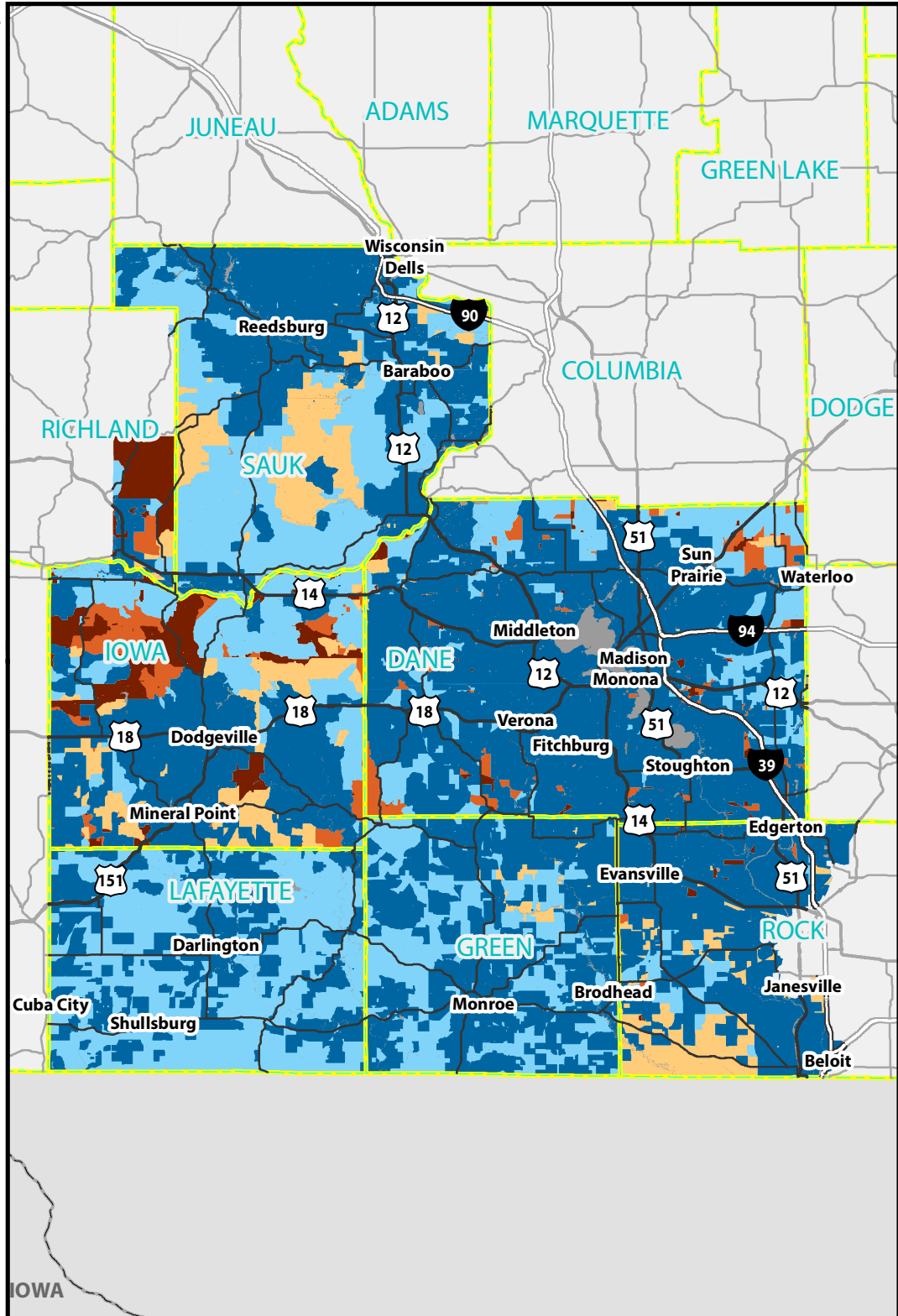
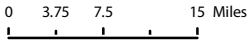
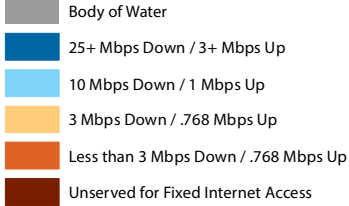
U.S. CONGRESSIONAL DISTRICT CONNECTIVITY SUMMARY

District 2 - Rep. Mark Pocan



U.S. Congressional District 2 Internet Speeds

Includes Wireline and Fixed Wireless Technologies
Download Speed / Upload Speed (Megabits per Second)



Broadband Expansion Grants

Grant recipients impacting U.S. Congressional District 2

(Project Name, Fiscal Year of Award, Award Total)

- WConnect Wireless, 2014, \$35,469
- Reedsburg Utility Commission, 2016, \$69,300
- Lafayette Development Corporation, 2017, \$86,084
- MH Telecom, LLC (City of Dodgeville), 2017, \$55,360
- TDS/Black Earth Tel. Co., 2017, \$156,500
- CenturyLink (City of Baraboo), 2018R1, \$167,300
- MH Telecom, LLC (Iowa County), 2018R1, \$126,162
- Town of Dunn (Charter cable), 2018R1, \$106,395
- TDS/Black Earth Tel. Co. (Town of Vermont), 2018R1, \$285,917
- Bug Tussel Wireless, LLC (Town of Brooklyn), 2018R2, \$102,982
- CenturyLink (Footville Area), 2018R2, \$25,875
- CenturyLink (Town of Mazomanie), 2018R2, \$10,500
- Green County Development Corporation, 2018R2, \$414,234
- Mount Horeb Tel. Co. (Town of Brigham), 2018R2, \$244,200
- TDS/Mt. Vernon Tel. Co. (New Glarus Area), 2018R2, \$351,857
- TDS/Utelco (Monticello Area), 2018R2, \$492,915
- Town of Dunn (Hoyos Consulting), 2018R2, \$31,146
- Bug Tussel Wireless (Lafayette County), 2019, \$308,384
- CenturyLink (Mazomanie), 2019, \$15,528
- Reedsburg Utility Commission (River Valley), 2019, \$305,550
- Reedsburg Utility Commission (Town of Delton), 2019, \$137,722
- Town of Sun Prairie (UpNetWI), 2019, \$25,004



Certified communities impacting U.S. Congressional District 2

- Iowa County
- Town of Berry (Dane County)
- Town of Brigham (Iowa County)



Certified communities impacting U.S. Congressional District 2

- City of Reedsburg (Sauk County)

Disclaimer: This map displays areas of the state that may have fixed internet access, but does not guarantee that said coverage exists in specific locations. Fixed internet access includes all wireline and fixed wireless services. Please contact any internet provider of interest to verify availability at a specific location. Access data are retrieved from internet providers and the Federal Communications Commission's Form 477. Map includes data as recent as December 31, 2018. For more information, view the Wisconsin Broadband Map at <https://maps.psc.wi.gov/apps/WisconsinBroadbandMap/> **Map Drafted:** 7/10/2019



Wisconsin Broadband Office, Public Service Commission of Wisconsin

psc.wi.gov PSCStateBroadbandOffice@wisconsin.gov
4822 Madison Yards Way, P.O. Box 7854, Madison, WI 53707-7854

