

Wisconsin Broadband Access- Serviceable Locations (BSL)

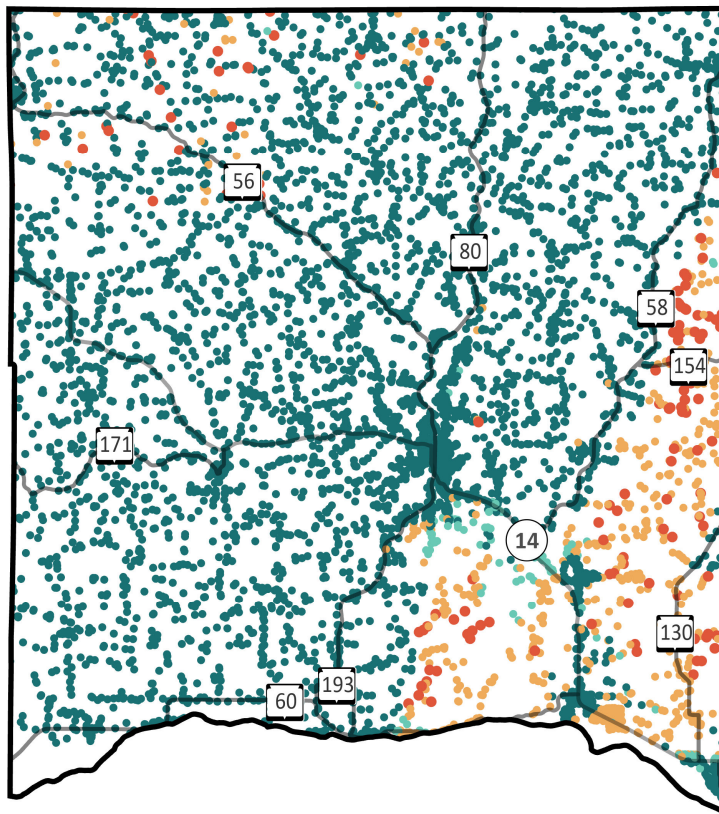
Richland County



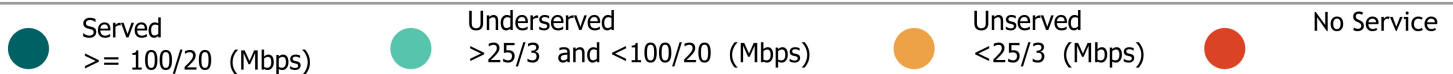
Total BSLs **9,077**

Underserved,
Unservd and No
Service Count **914**

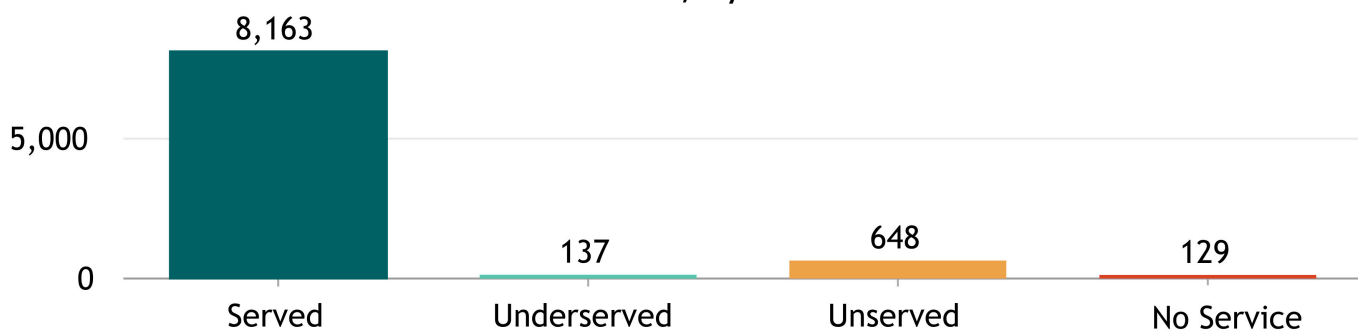
Source: FCC Broadband Data Collection BSL Service Status as of June 30, 2023



Explore the Broadband Planning Map at <https://maps.psc.wi.gov/apps/WisconsinBroadbandPlanningMap/>



BSL count, by service status



"Broadband service" = an internet service with a minimum speed 100/20 Mbps

% of BSLs, by urbanicity type, by service status



Wisconsin Broadband- Enforceable Funding Commitment

Richland County



9,077

Count of Total BSLs

914

Count of Underserved, Unserved, and No Service BSLs

Source: FCC Broadband Data Collection BSL Service Status as of June 30, 2023

"Enforceable Funding Commitment", (EFC) for the purposes of BEAD is any "in progress" award that will build service of at least 100/20 to all locations by either a wireline cable or fiber connection, or a licensed fixed wireless connection. This includes a subset of state awards, all ARPA awards, all USDA Reconnect awards, RDOF, and E-ACAM.

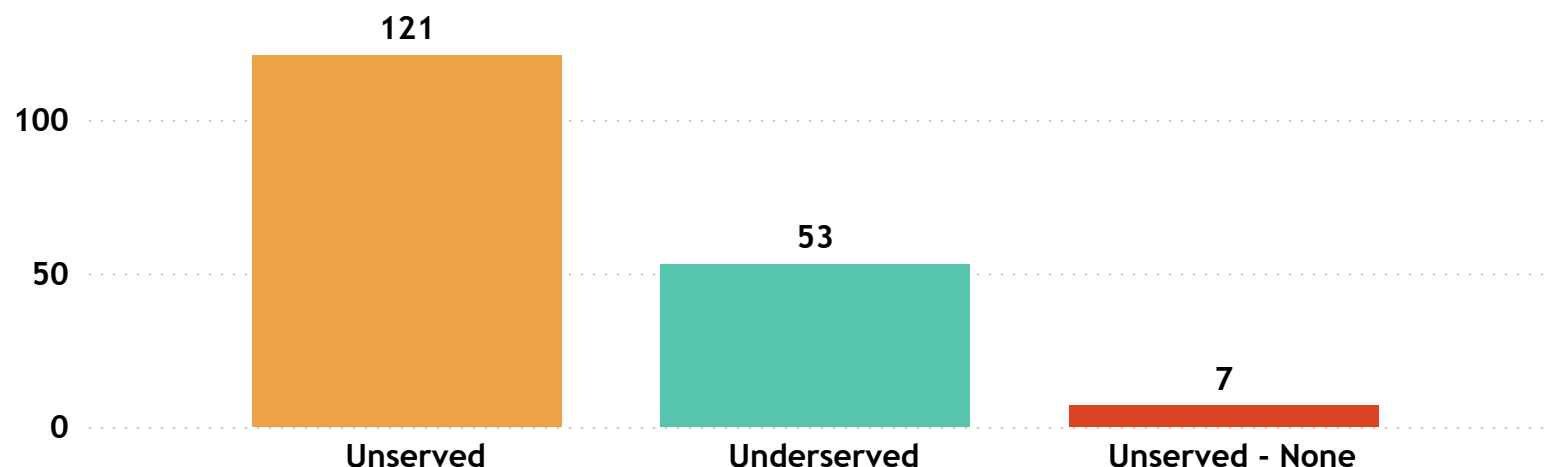
Estimated Underserved, Unserved and No Service Locations without Enforceable Funding Commitment

181

Estimated Underserved, Unserved and No Service Locations without EFC (count of locations **min** to **max**)



Estimated Underserved, Unserved, and No Service locations without EFC



Richland County

FCC service as of December 31, 2022

15

ISP

Brightspeed

Bug Tussel Wireless LLC

CenturyLink (owned by Lumen)

Charter Communications Inc

Frontier

Hillsboro Telephone Company

LaValle Telephone Company

LightSpeed powered by Reedsburg Utility

Mediacom Wisconsin LLC

Richland-Grant Telephone Company

Tech-Com, Inc.

T-Mobile US

United States Cellular Corporation

Verizon

Vernon Communications

Wisconsin Broadband Affordability- Plan Cost

'Broadband service' = an internet service with a minimum speed 100/20 Mbps

ISPs in Wisconsin: 126

ISPs in Richland County : 15

State Minimum Broadband
Monthly Price Range
\$ 49.95 - \$ 156.50

State Average of Minimum
Broadband Price/ Month
\$64.85

WI Household (HH)
Median Income
\$67,080

AFFORDABILITY CRITERIA:
1.17% of Household Income

WI Average Minimum Broadband Price/
Month
(in \$) by Urbanicity



Source: Service offerings from ISPs representing 2,200 price offerings across all counties.

HH annual income-range (\$)	Broadband Plan* monthly cost
less than \$15K	less than \$15
\$15K - \$24K	\$15 - \$24
\$25K - \$39K	\$25 - \$38
\$40K - \$54K	\$39 - \$52
\$55K - \$69K	\$53 - \$67
\$70K - \$84K	\$68 - \$81
\$85K - \$99K	\$82 - \$96
\$100K - \$150K	\$97 - \$146
\$150K+	\$147+

* Broadband plan: is a plan providing internet service of a minimum speed of 100/20Mbps

The commonly accepted Broadband cost-burden threshold's income (see worldwide affordability target by 2025)

Richland County

Average of Minimum Broadband
Price/ Month

\$ 77.77

Richland County

Household (HH) Median Income

\$ 52,052

Wisconsin HHs: 2,401,818

Richland County HHs: 7,580

Source: ACS 5y 2017-2021