

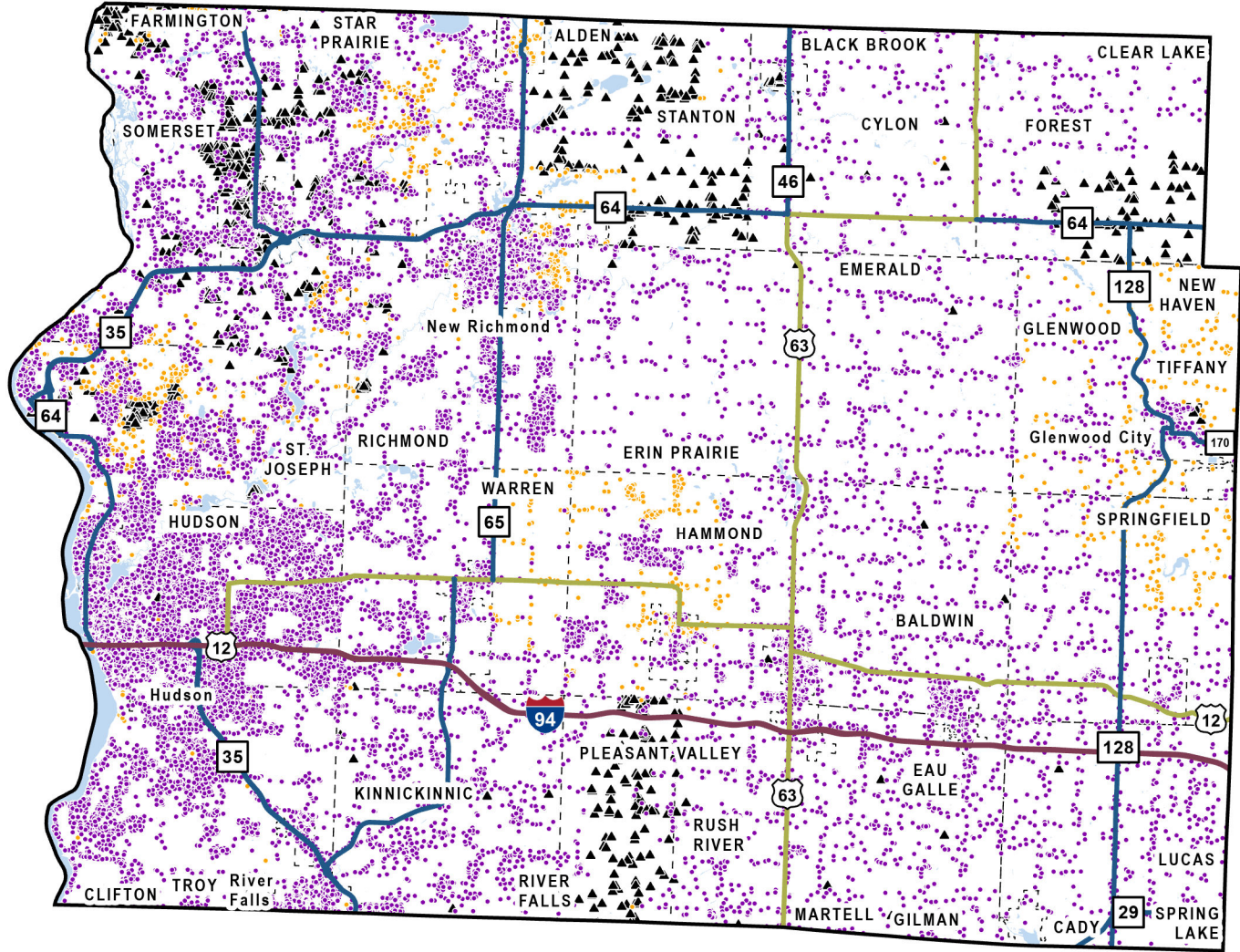
St Croix County

Total BSLs: **35,988**

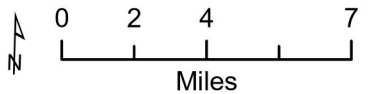
Eligible: **2,267**

Ineligible (Served): **32,298**

Ineligible (In Progress): **1,423**



- Eligible for BEAD
- Not Eligible - Served
- ▲ Not Eligible - In Progress
- State Highways
- Interstate Highways
- US Highways
- City/Village/Town Boundary
- County Boundary



In-Progress Enforceable Grant Commitments - St. Croix County

Program	Awardee	Location Count
Federal Communications Commission - E-ACAM	Amery Telcom, Inc. - WI	879
Federal Communications Commission - E-ACAM	Baldwin Telecom, Inc. - WI	11
Federal Communications Commission - Rural Digital Opportunity Fund	Baldwin Telecom, Inc. - WI - Gigabit	1
Federal Communications Commission - Rural Digital Opportunity Fund	Somerset Telephone Co., Inc. - WI - Gigabit	299
State Grant - American Rescue Plan Act	NextGen Communications LLC	3
State Grant - American Rescue Plan Act	Swiftcurrent Connect	1
State Grant - Broadband Expansion	Lakeland Communications Group, LLC dba Lakeland Communications	14
State Grant - Broadband Expansion	NextGen Communications LLC	75
State Grant - Broadband Expansion	Northwest Communications Inc	159
State Grant - Broadband Expansion	Swiftcurrent Connect	5
State Grant - Capital Projects Fund	Swiftcurrent Connect	115
U.S. Department of Agriculture - Telecommunications Infrastructure Loan Program	Baldwin Telecom, Inc.- WI0580-N42	9
Total		1,571

Note: In-Progress Enforceable Grant Commitment Total may exceed In-Progress Location Total due to overlapping commitments.

See data in interactive online map: <https://maps.psc.wi.gov/apps/BEADeligibilityMap/>

More information:

- [BEAD Grant Program Information](#)
- [PSC Engagement and Endorsement FAQ](#)
- [UW-Extension Engagement and Endorsement Resources](#)

Contact: PSCBEADGrants@wisconsin.gov.