

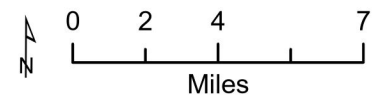
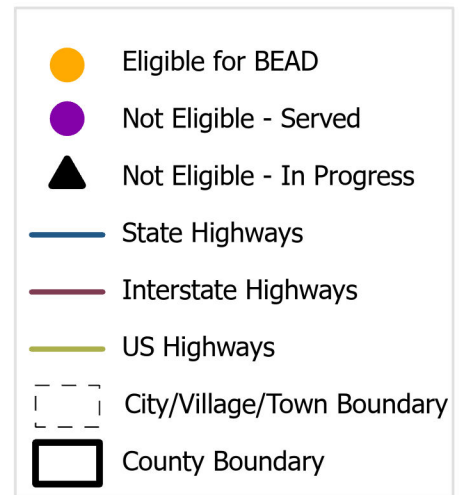
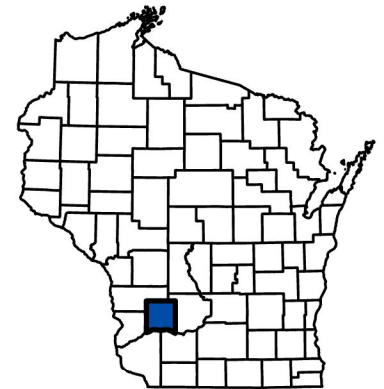
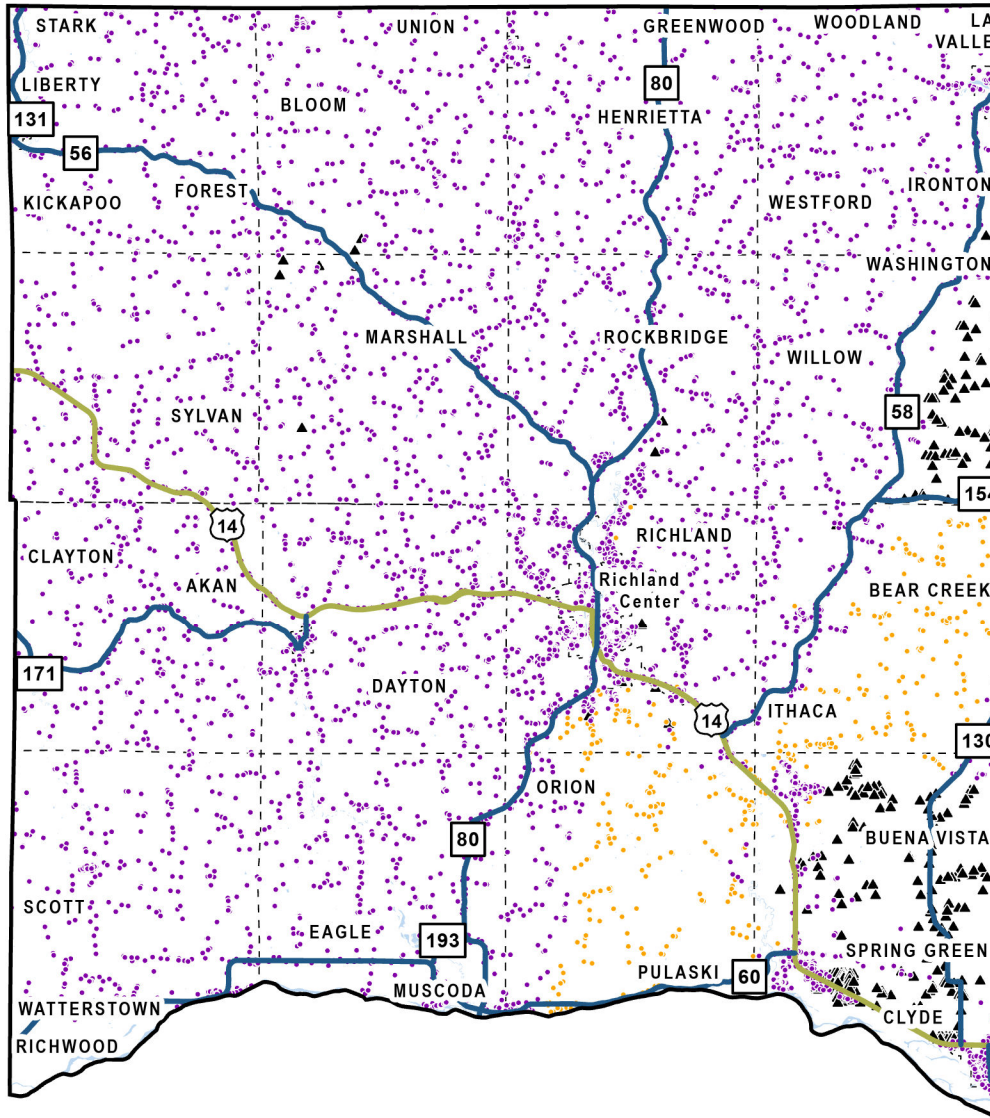
Richland County

Total BSLs: **8,989**

Eligible: **470**

Ineligible (Served): **8,196**

Ineligible (In Progress): **323**



In-Progress Enforceable Grant Commitments - Richland County

Program	Awardee	Location Count
Federal Communications Commission - E-ACAM	Vernon Telephone Cooperative, Inc. - WI	3
Federal Communications Commission - Rural Digital Opportunity Fund	Charter Fiberlink CCO, LLC - WI - Gigabit	65
Federal Communications Commission - Rural Digital Opportunity Fund	La Valle Telephone Cooperative, Inc. - WI - Gigabit	4
Federal Communications Commission - Rural Digital Opportunity Fund	Reedsburg Utility Commission - WI - Gigabit	160
Federal Communications Commission - Rural Digital Opportunity Fund	Richland-Grant Telephone Cooperative, Inc. - WI - Gigabit	4
State Grant - American Rescue Plan Act	LightSpeed powered by Reedsburg Utility	3
State Grant - American Rescue Plan Act	Vernon Communications	3
State Grant - Broadband Expansion	LaValle Telephone Company	9
State Grant - Broadband Expansion	LightSpeed powered by Reedsburg Utility	85
U.S. Department of Agriculture - ReConnect	Reedsburg Utility Commission-WI1702-A72	235
Total		571

Note: In-Progress Enforceable Grant Commitment Total may exceed In-Progress Location Total due to overlapping commitments.

See data in interactive online map: <https://maps.psc.wi.gov/apps/BEADEligibilityMap/>

More information:

- [BEAD Grant Program Information](#)
- [PSC Engagement and Endorsement FAQ](#)
- [UW-Extension Engagement and Endorsement Resources](#)

Contact: PSCBEADGrants@wisconsin.gov.