

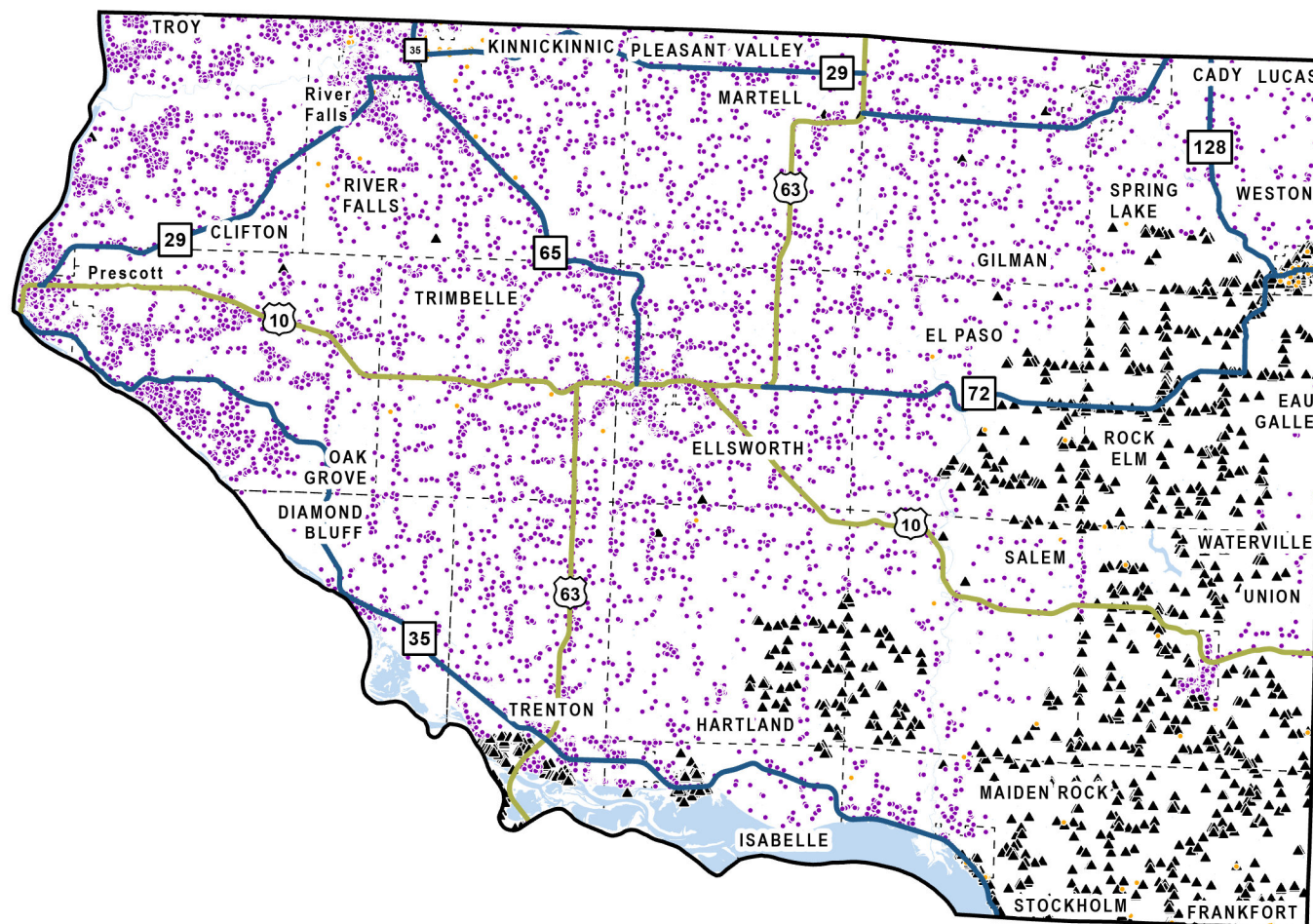
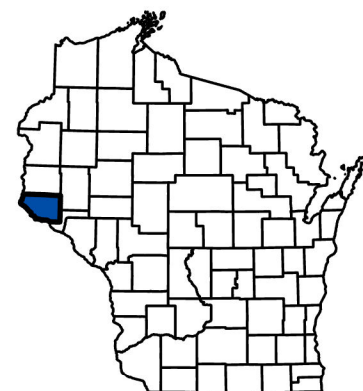
Pierce County

Total BSLs: **16,037**

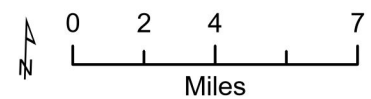
Eligible: **112**

Ineligible (Served): **14,084**

Ineligible (In Progress): **1,841**



- Eligible for BEAD
- Not Eligible - Served
- ▲ Not Eligible - In Progress
- State Highways
- Interstate Highways
- US Highways
- City/Village/Town Boundary
- County Boundary



In-Progress Enforceable Grant Commitments - Pierce County

Program	Awardee	Location Count
Federal Communications Commission - E-ACAM	Baldwin Telecom, Inc. - WI	1
Federal Communications Commission - E-ACAM	Rural Communications Holding Corporation - WI	518
Federal Communications Commission - E-ACAM	Spring Valley Telephone Company, Inc. - WI	7
State Grant - American Rescue Plan Act	Swiftcurrent Connect	3
State Grant - Broadband Expansion	Celect Communications	231
State Grant - Broadband Expansion	Swiftcurrent Connect	4
State Grant - Capital Projects Fund	Swiftcurrent Connect	1,113
U.S. Department of Agriculture - Telecommunications Infrastructure Loan Program	Baldwin Telecom, Inc.- WI0580-N42	1
Total		1,878

Note: In-Progress Enforceable Grant Commitment Total may exceed In-Progress Location Total due to overlapping commitments.

See data in interactive online map: <https://maps.psc.wi.gov/apps/BEADeligibilityMap/>

More information:

- [BEAD Grant Program Information](#)
- [PSC Engagement and Endorsement FAQ](#)
- [UW-Extension Engagement and Endorsement Resources](#)

Contact: PSCBEADGrants@wisconsin.gov.