

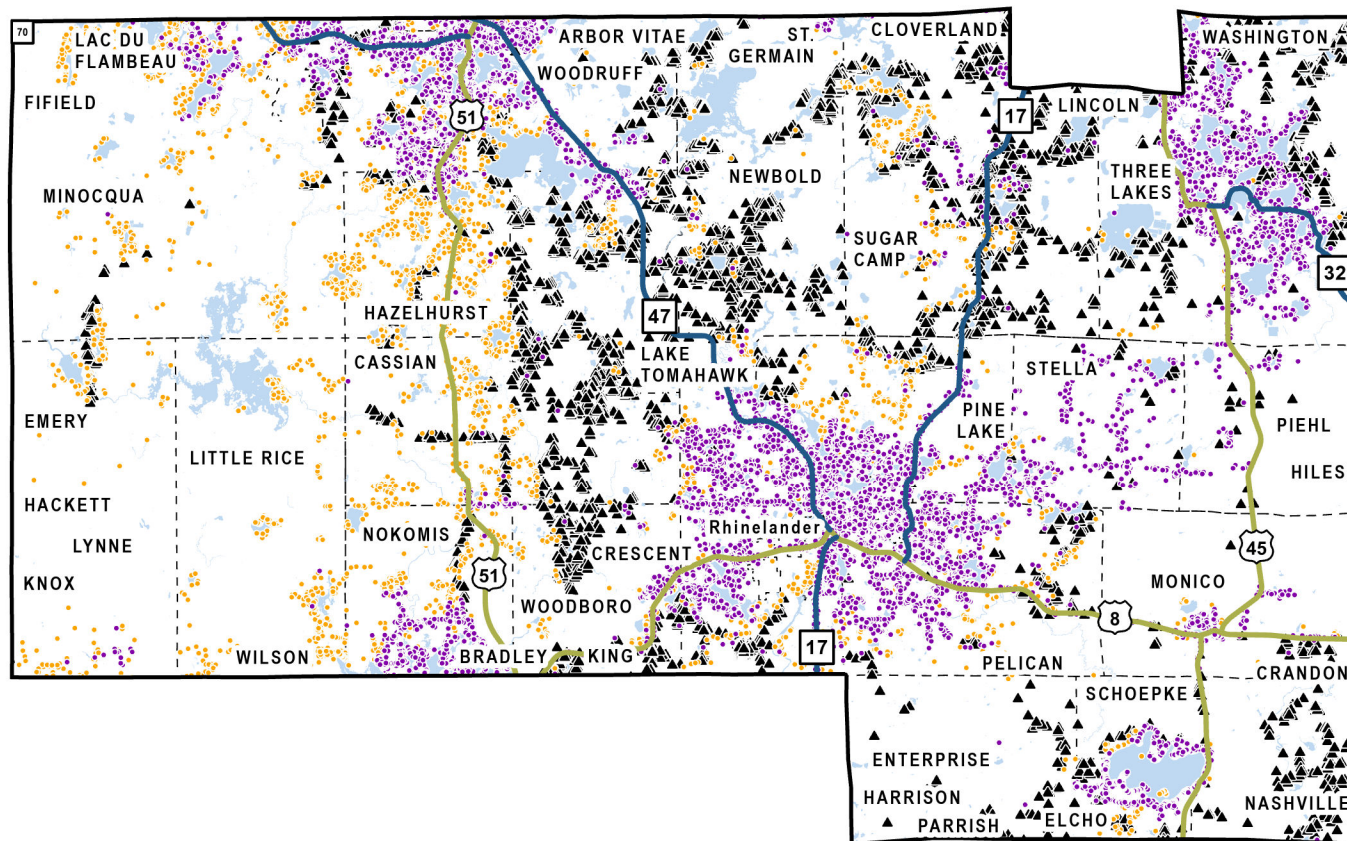
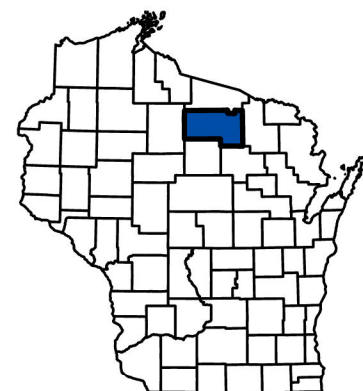
Oneida County

Total BSLs: **30,544**

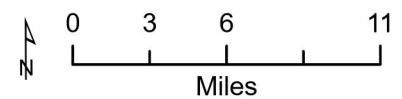
Eligible: **5,644**

Ineligible (Served): **18,826**

Ineligible (In Progress): **6,074**



- Eligible for BEAD
- Not Eligible - Served
- ▲ Not Eligible - In Progress
- State Highways
- Interstate Highways
- US Highways
- City/Village/Town Boundary
- County Boundary



In-Progress Enforceable Grant Commitments - Oneida County

Program	Awardee	Location Count
Federal Communications Commission - Rural Digital Opportunity Fund	Charter Fiberlink CCO, LLC - WI - Gigabit	5,402
State Grant - American Rescue Plan Act	Bug Tussel Wireless	4
State Grant - Broadband Expansion	Astrea	3
State Grant - Broadband Expansion	Bug Tussel Wireless	928
State Grant - Broadband Expansion	Spectrum	7
Total		6,344

Note: In-Progress Enforceable Grant Commitment Total may exceed In-Progress Location Total due to overlapping commitments.

See data in interactive online map: <https://maps.psc.wi.gov/apps/BEADEligibilityMap/>

More information:

- [BEAD Grant Program Information](#)
- [PSC Engagement and Endorsement FAQ](#)
- [UW-Extension Engagement and Endorsement Resources](#)

Contact: PSCBEADGrants@wisconsin.gov.