

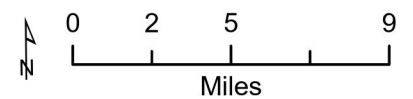
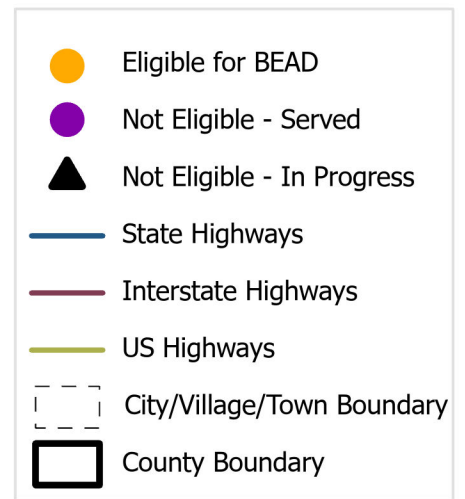
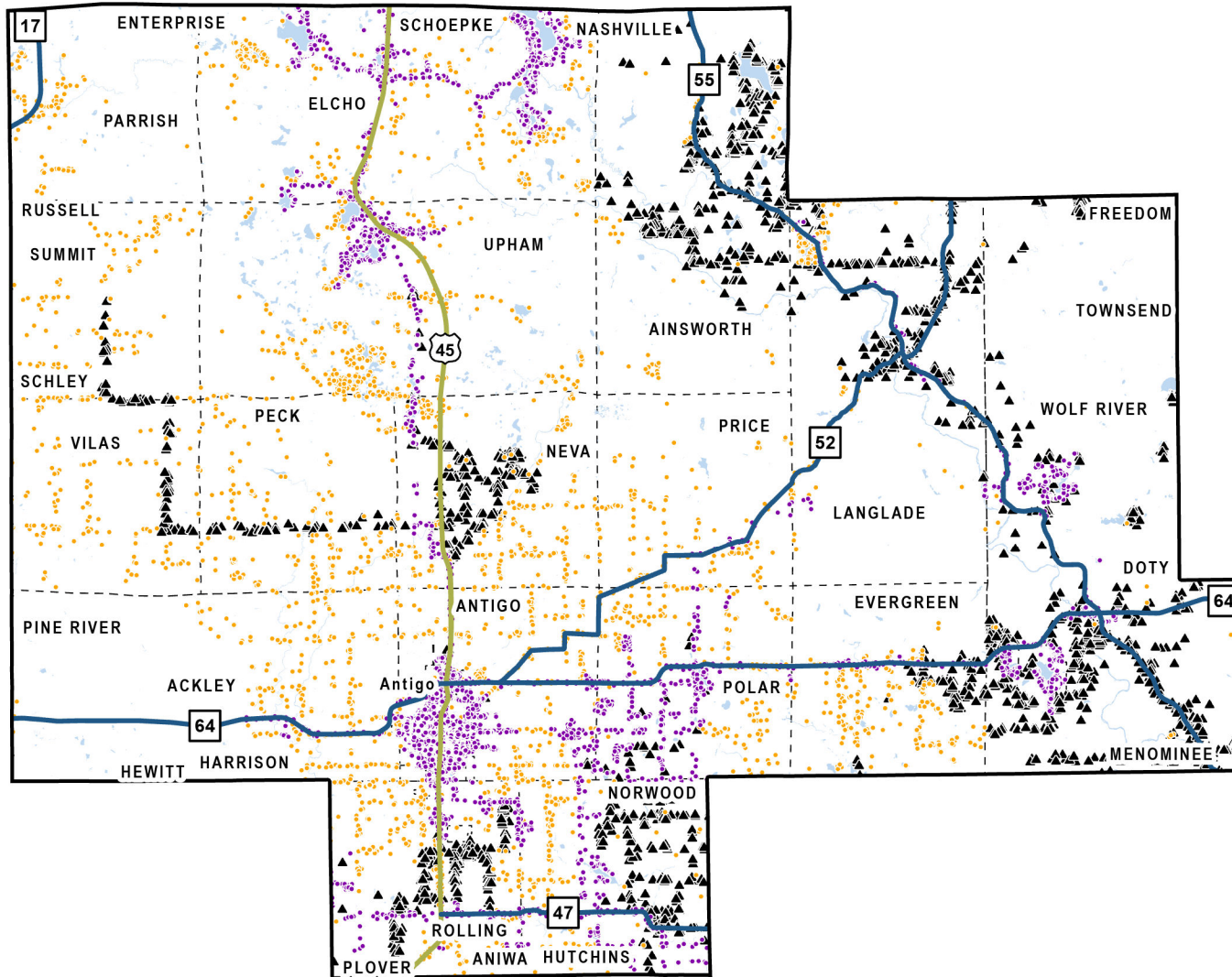
Langlade County

Total BSLs: **13,378**

Eligible: **3,438**

Ineligible (Served): **7,401**

Ineligible (In Progress): **2,539**



In-Progress Enforceable Grant Commitments - Langelde County

Program	Awardee	Location Count
Federal Communications Commission - Rural Digital Opportunity Fund	Charter Fiberlink CCO, LLC - WI - Gigabit	1,737
Local Grant - American Rescue Plan Act	Brightspeed	1
State Grant - American Rescue Plan Act	Wittenberg Cable TV Company Inc	40
State Grant - Broadband Expansion	Cirrinity	455
State Grant - Broadband Expansion	Tri-County Communications	2
State Grant - Broadband Expansion	Wittenberg Cable TV Company Inc	126
State Grant - Capital Projects Fund	Wittenberg Cable TV Company Inc	193
Total		2,554

Note: In-Progress Enforceable Grant Commitment Total may exceed In-Progress Location Total due to overlapping commitments.

See data in interactive online map: <https://maps.psc.wi.gov/apps/BEADEligibilityMap/>

More information:

- [BEAD Grant Program Information](#)
- [PSC Engagement and Endorsement FAQ](#)
- [UW-Extension Engagement and Endorsement Resources](#)

Contact: PSCBEADGrants@wisconsin.gov.