

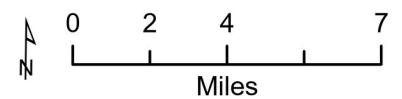
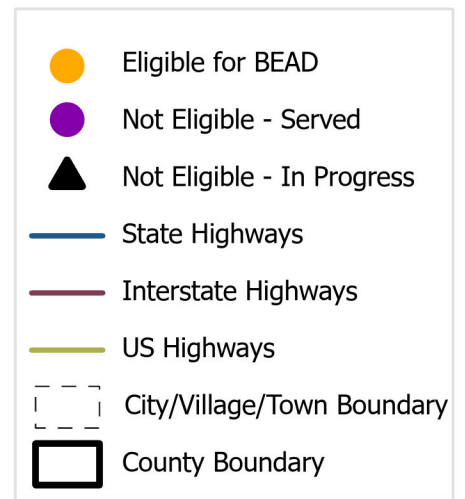
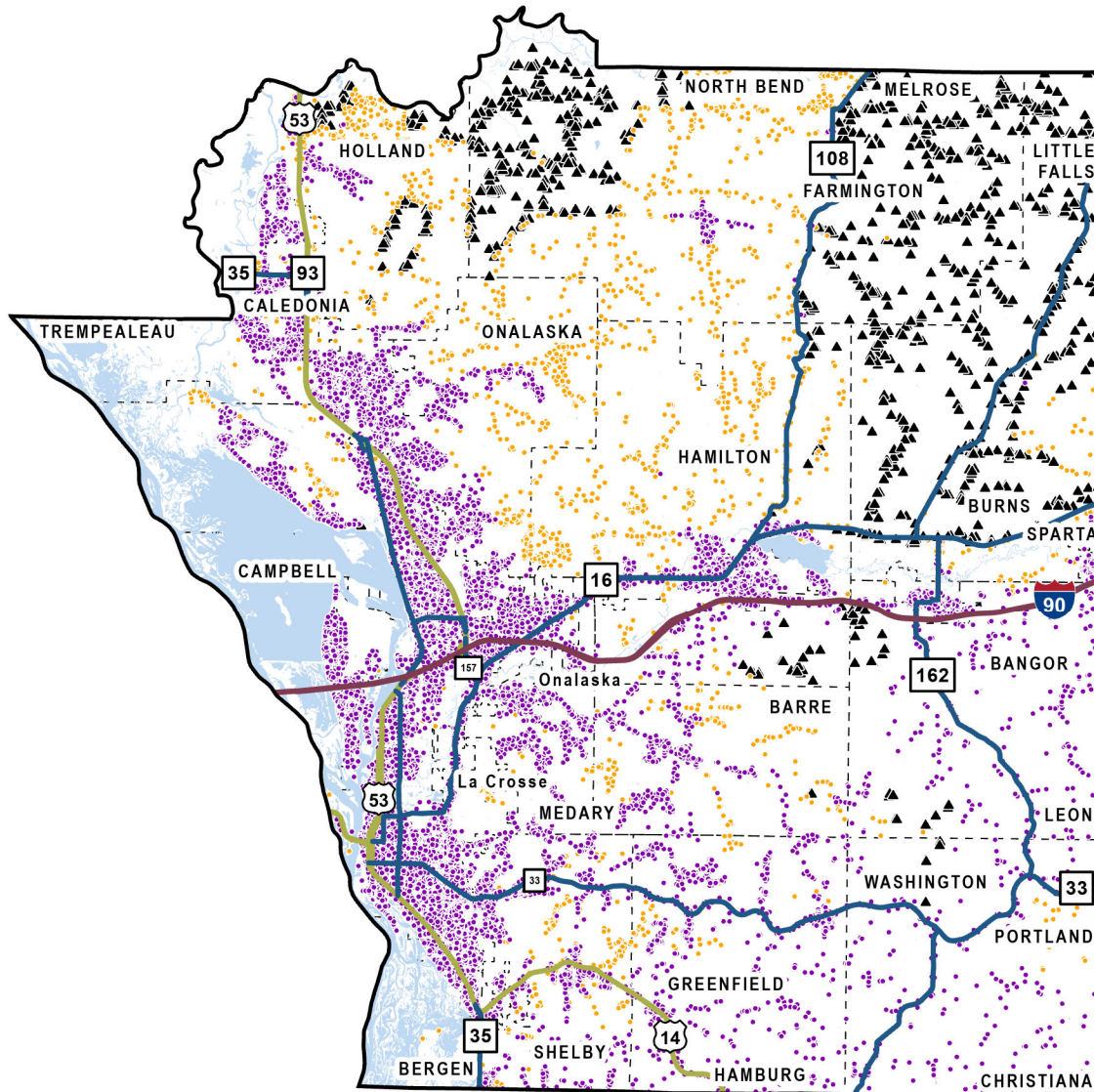
La Crosse County

Total BSLs: **42,226**

Eligible: **2,258**

Ineligible (Served): **38,916**

Ineligible (In Progress): **1,052**



In-Progress Enforceable Grant Commitments - La Crosse County

Program	Awardee	Location Count
Federal Communications Commission - Rural Digital Opportunity Fund	Charter Fiberlink CCO, LLC - WI - Gigabit	1,049
Total		1,049

Note: In-Progress Enforceable Grant Commitment Total may exceed In-Progress Location Total due to overlapping commitments.

See data in interactive online map: <https://maps.psc.wi.gov/apps/BEADeligibilityMap/>

More information:

- [BEAD Grant Program Information](#)
- [PSC Engagement and Endorsement FAQ](#)
- [UW-Extension Engagement and Endorsement Resources](#)

Contact: PSCBEADGrants@wisconsin.gov.