

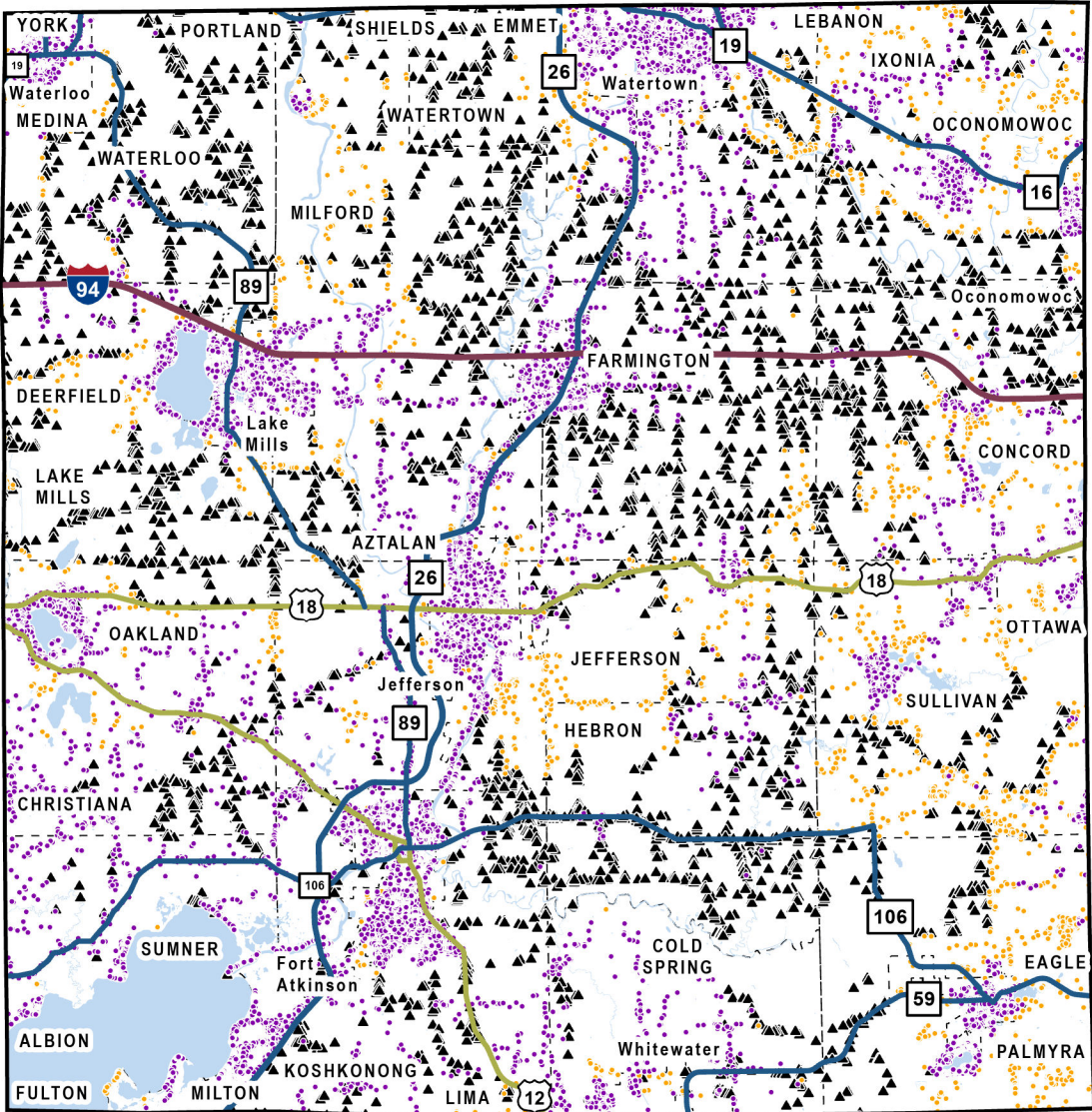
# Jefferson County

Total BSLs: **34,262**

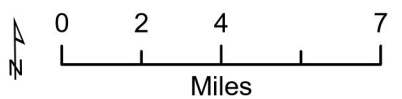
Eligible: **2,621**

Ineligible (Served): **27,773**

Ineligible (In Progress): **3,868**



- Eligible for BEAD
- Not Eligible - Served
- ▲ Not Eligible - In Progress
- State Highways
- Interstate Highways
- US Highways
- - - City/Village/Town Boundary
- ▭ County Boundary



## In-Progress Enforceable Grant Commitments - Jefferson County

<b>Program</b>	<b>Awardee</b>	<b>Location Count</b>
Federal Communications Commission - E-ACAM	Telephone & Data Systems, incl. UScellular - WI	771
Federal Communications Commission - Rural Digital Opportunity Fund	Charter Fiberlink CCO, LLC - WI - Gigabit	2,293
State Grant - Broadband Expansion	Edge Broadband	891
State Grant - Capital Projects Fund	Bug Tussel Wireless	99
<b>Total</b>		<b>4,054</b>

*Note: In-Progress Enforceable Grant Commitment Total may exceed In-Progress Location Total due to overlapping commitments.*

See data in interactive online map: <https://maps.psc.wi.gov/apps/BEADEligibilityMap/>

More information:

- [BEAD Grant Program Information](#)
- [PSC Engagement and Endorsement FAQ](#)
- [UW-Extension Engagement and Endorsement Resources](#)

Contact: [PSCBEADGrants@wisconsin.gov](mailto:PSCBEADGrants@wisconsin.gov).