

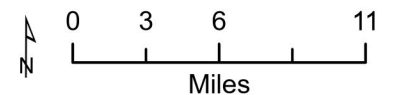
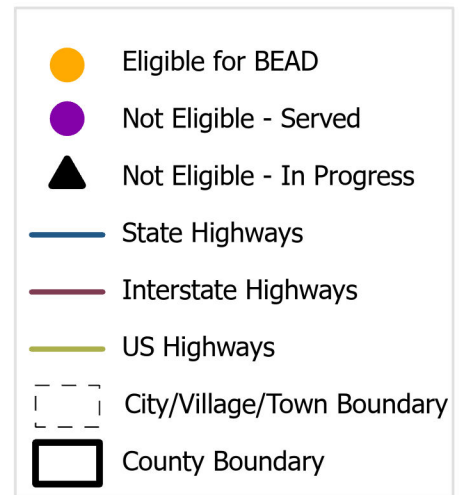
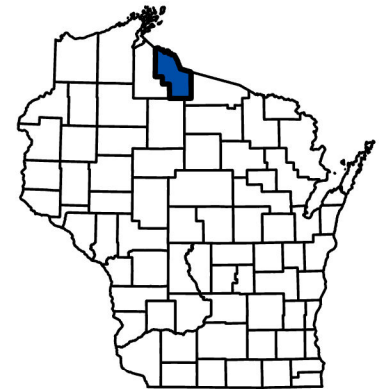
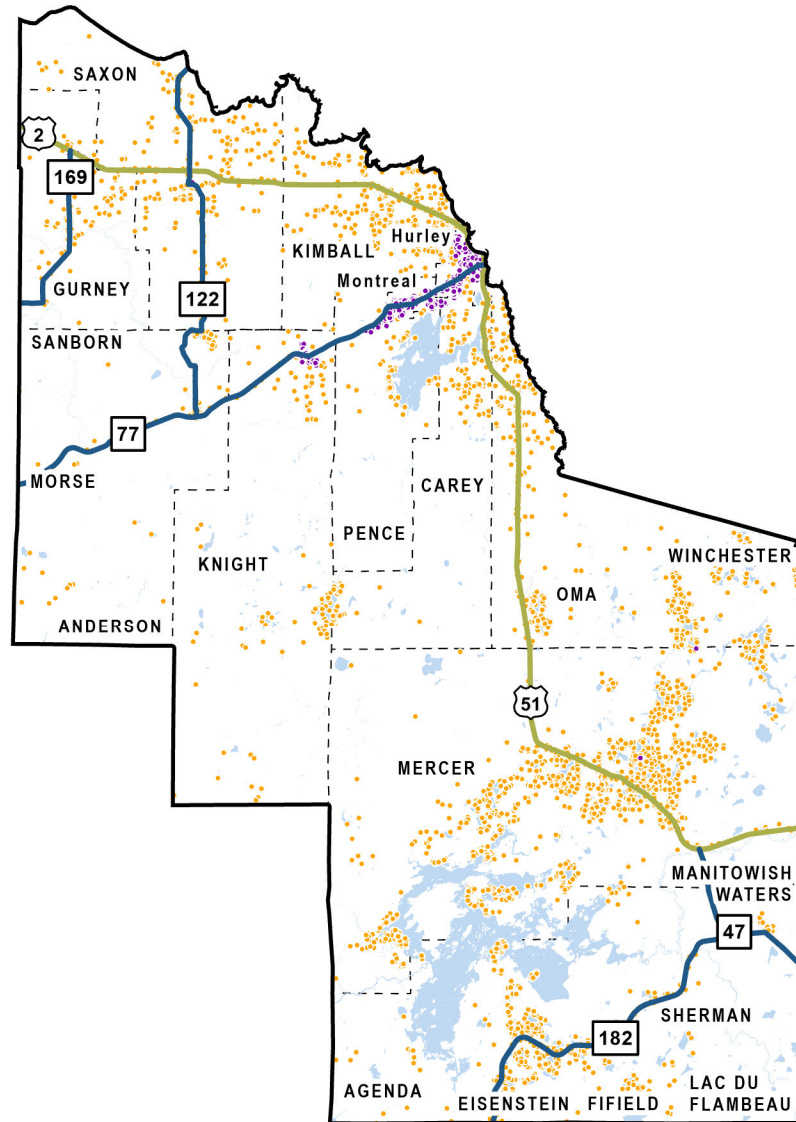
# Iron County

Total BSLs: **6,323**

Eligible: **4,606**

Ineligible (Served): **1,715**

Ineligible (In Progress): **2**



## In-Progress Enforceable Grant Commitments - Iron County

<b>Program</b>	<b>Awardee</b>	<b>Location Count</b>
Federal Communications Commission - E-ACAM	LICT Corporation - MI	1
State Grant - Broadband Expansion	Spectrum	1
<b>Total</b>		<b>2</b>

*Note: In-Progress Enforceable Grant Commitment Total may exceed In-Progress Location Total due to overlapping commitments.*

See data in interactive online map: <https://maps.psc.wi.gov/apps/BEADeligibilityMap/>

More information:

- [BEAD Grant Program Information](#)
- [PSC Engagement and Endorsement FAQ](#)
- [UW-Extension Engagement and Endorsement Resources](#)

Contact: [PSCBEADGrants@wisconsin.gov](mailto:PSCBEADGrants@wisconsin.gov).