

Wisconsin Broadband Access- Serviceable Locations (BSL)

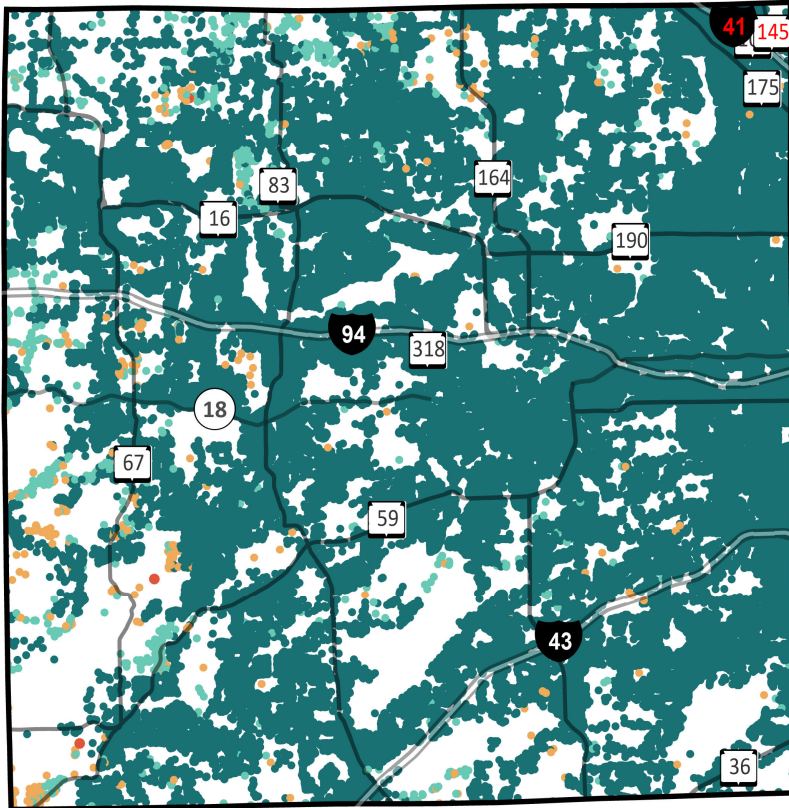
Waukesha County



Total BSLs **135,823**

Underserved,
Unservd and No
Service Count **1,252**

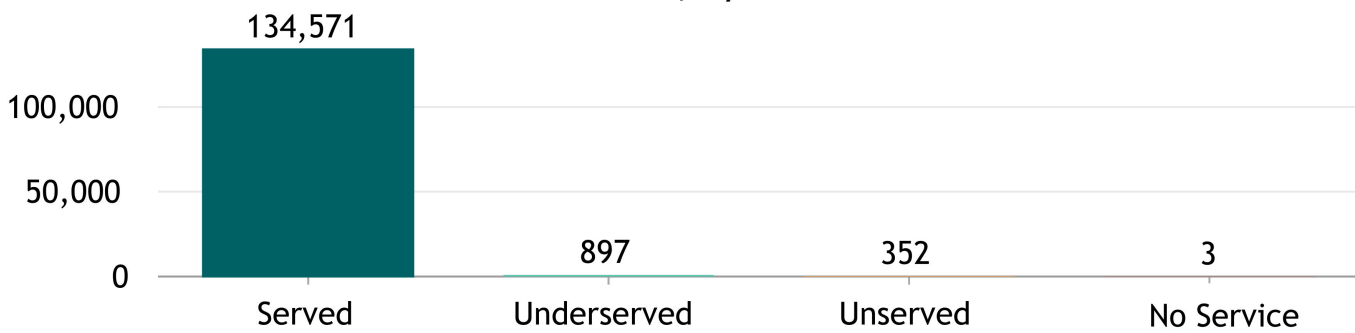
Source: FCC Broadband Data Collection BSL Service Status as of June 30, 2023



Explore the Broadband Planning Map at <https://maps.psc.wi.gov/apps/WisconsinBroadbandPlanningMap/>

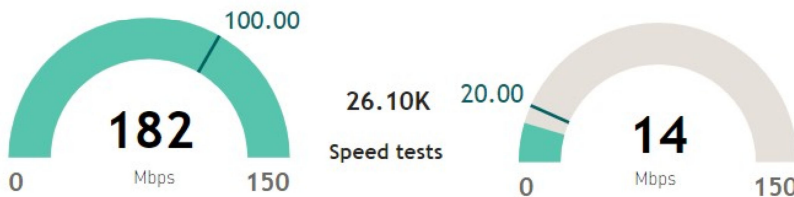


BSL count, by service status



"Broadband service" = an internet service with a minimum speed 100/20 Mbps

% of BSLs, by urbanicity type, by service status



Wisconsin Broadband- Enforceable Funding Commitment

Waukesha County



135,823

Count of Total BSLs

1,252

Count of Underserved, Unserved, and No Service BSLs

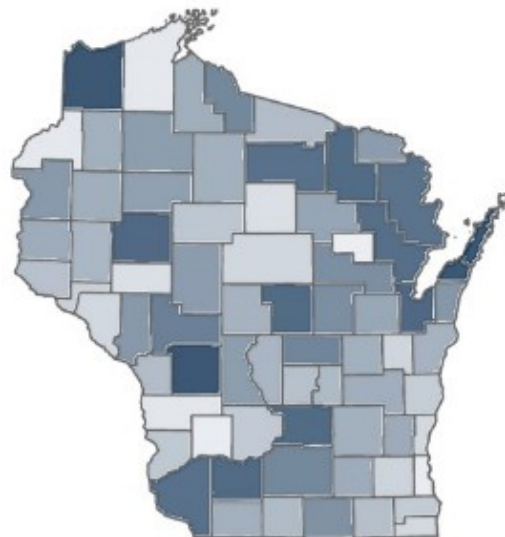
Source: FCC Broadband Data Collection BSL Service Status as of June 30, 2023

"Enforceable Funding Commitment", (EFC) for the purposes of BEAD is any "in progress" award that will build service of at least 100/20 to all locations by either a wireline cable or fiber connection, or a licensed fixed wireless connection. This includes a subset of state awards, all ARPA awards, all USDA Reconnect awards, RDOF, and E-ACAM.

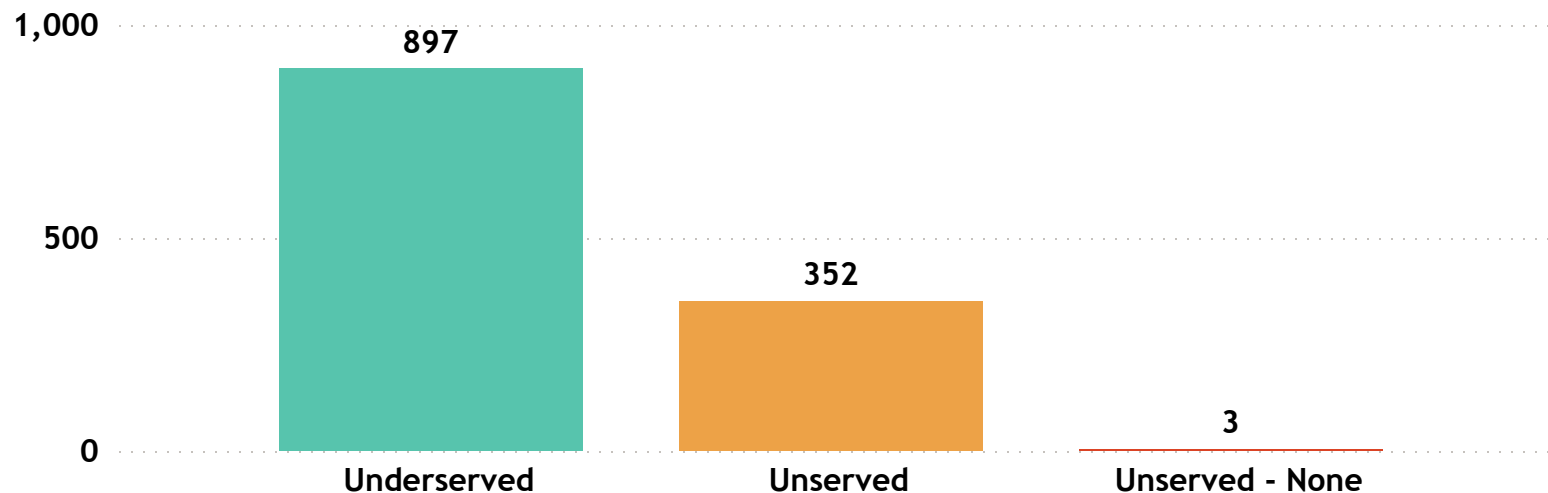
Estimated Underserved, Unserved and No Service Locations without Enforceable Funding Commitment

1,252

Estimated Underserved, Unserved and No Service Locations without EFC (count of locations **min** to **max**)



Estimated Underserved, Unserved, and No Service locations without EFC



Waukesha County

FCC service as of December 31, 2022

21

ISP
▲

APX Net

AT&T Inc

Bertram Internet

Brightspeed

Bug Tussel Wireless LLC

CenturyLink (owned by Lumen)

Charter Communications Inc

Consolidated Communications, Fidium

Crown Castle Fiber LLC

Edge Broadband

Ethoplex

e-vergent

Frontier

Hoyos Consulting, LLC

S-Net Communications

TDS Telecom

T-Mobile US

TPx Communications

United States Cellular Corporation

US Signal Company

Verizon

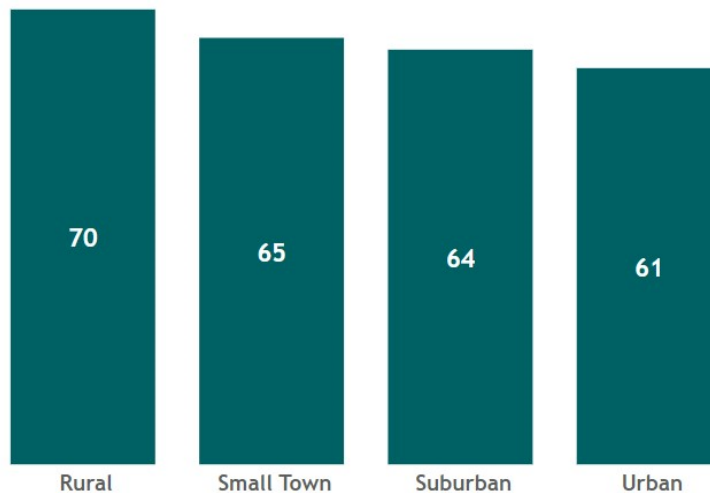
Wisconsin Broadband Affordability- Plan Cost

'Broadband service' = an internet service with a minimum speed 100/20 Mbps

ISPs in Wisconsin: 126

ISPs in Waukesha County : 21

WI Average Minimum Broadband Price/ Month (in \$) by Urbanicity



State Minimum Broadband Monthly Price Range
\$ 49.95 - \$ 156.50

State Average of Minimum Broadband Price/ Month
\$64.85

WI Household (HH) Median Income
\$67,080

Source: Service offerings from ISPs representing 2,200 price offerings across all counties.

AFFORDABILITY CRITERIA:
1.17% of Household Income

HH annual income-range (\$)	Broadband Plan* monthly cost
less than \$15K	less than \$15
\$15K - \$24K	\$15 - \$24
\$25K - \$39K	\$25 - \$38
\$40K - \$54K	\$39 - \$52
\$55K - \$69K	\$53 - \$67
\$70K - \$84K	\$68 - \$81
\$85K - \$99K	\$82 - \$96
\$100K - \$150K	\$97 - \$146
\$150K+	\$147+

* Broadband plan: is a plan providing internet service of a minimum speed of 100/20Mbps

The commonly accepted Broadband cost-burden threshold's income (see worldwide affordability target by 2025)

Waukesha County

Average of Minimum Broadband Price/ Month

\$ 60.41

Waukesha County

Household (HH) Median Income

\$ 88,985

Wisconsin HHs: 2,401,818

Waukesha County HHs 159,780

Source: ACS 5y 2017-2021