

Wisconsin Broadband Access- Serviceable Locations (BSL)

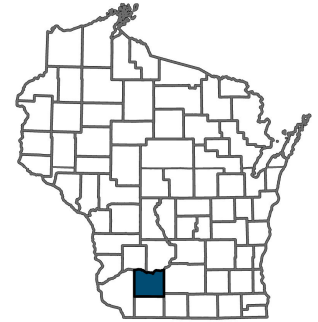
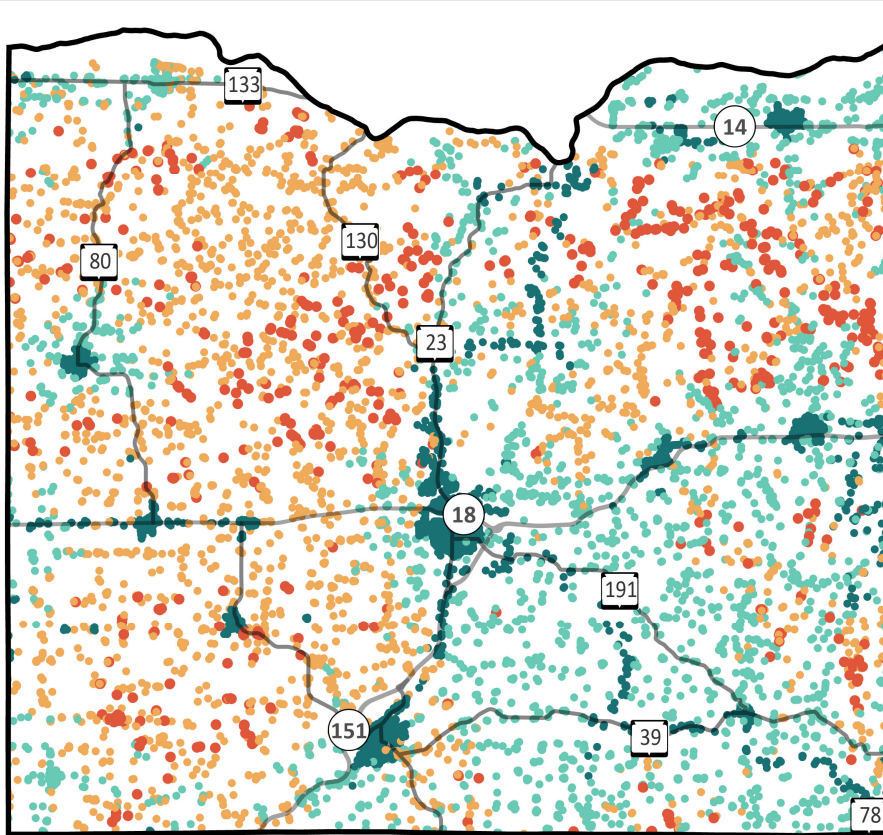
Iowa County



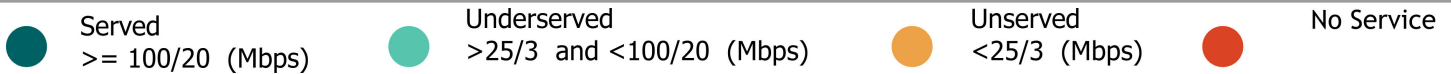
Total BSLs **13,389**

Underserved,
Unservd and No
Service Count **6,881**

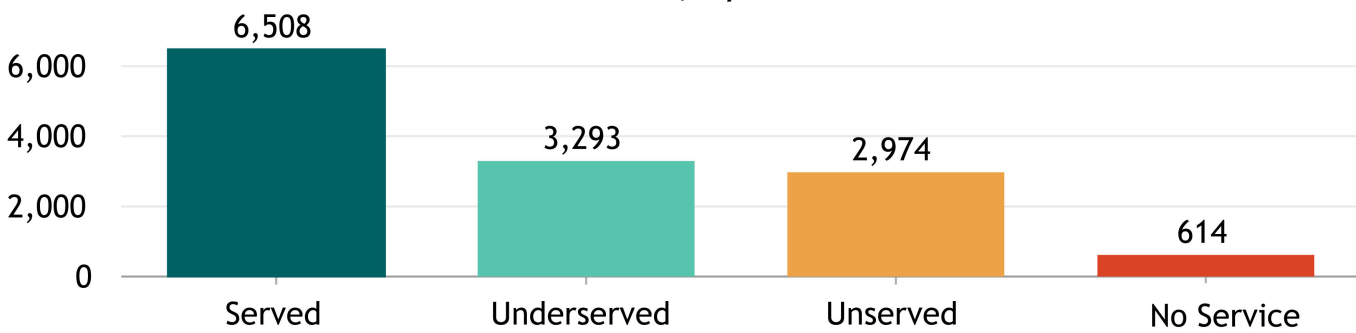
Source: FCC Broadband Data Collection BSL Service Status as of June 30, 2023



Explore the Broadband Planning Map at <https://maps.psc.wi.gov/apps/WisconsinBroadbandPlanningMap/>

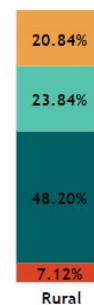


BSL count, by service status



"Broadband service" = an internet service with a minimum speed 100/20 Mbps

% of BSLs, by urbanicity type, by service status



Note: For counties having 100% BSL in the same urbanicity type only one bar is displayed.

Wisconsin Broadband- Enforceable Funding Commitment

Iowa County



13,389

Count of Total BSLs

6,881

Count of Underserved, Unserved, and No Service BSLs

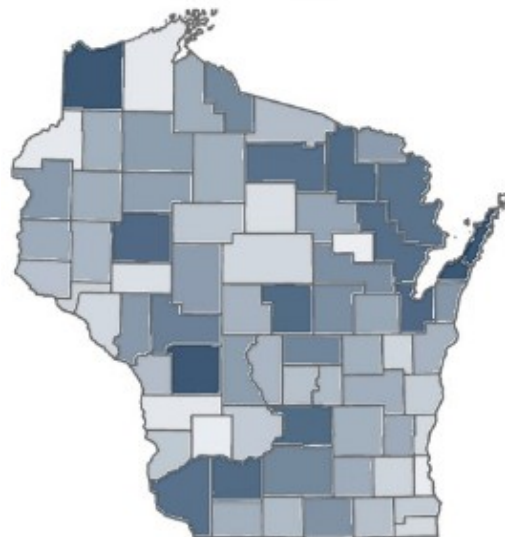
Source: FCC Broadband Data Collection BSL Service Status as of June 30, 2023

"Enforceable Funding Commitment", (EFC) for the purposes of BEAD is any "in progress" award that will build service of at least 100/20 to all locations by either a wireline cable or fiber connection, or a licensed fixed wireless connection. This includes a subset of state awards, all ARPA awards, all USDA Reconnect awards, RDOF, and E-ACAM.

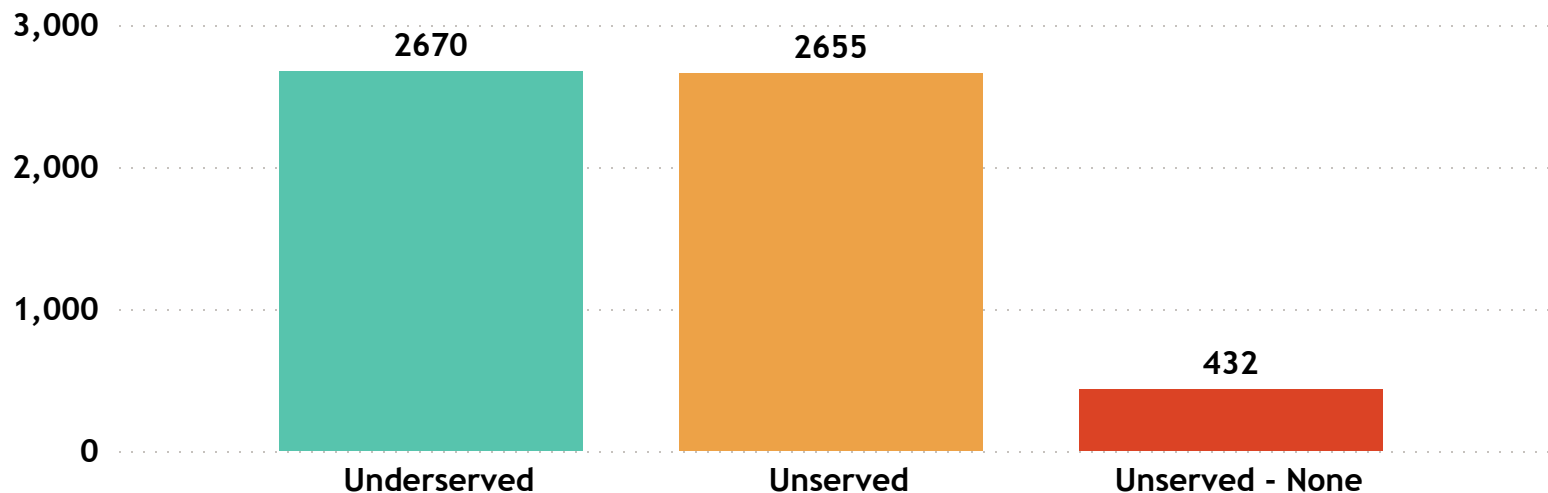
Estimated Underserved, Unserved and No Service Locations without Enforceable Funding Commitment

5,757

Estimated Underserved, Unserved and No Service Locations without EFC (count of locations **min** to **max**)



Estimated Underserved, Unserved, and No Service locations without EFC



Iowa County

FCC service as of December 31, 2022

19

ISP
▲

Brightspeed

Bug Tussel Wireless LLC

CenturyLink (Owned by Lumen)

Charter Communications Inc

Comelec Internet Services

Consolidated Communications, Fidium

Frontier

LICT - Belmont Telephone Company

LightSpeed powered by Reedsburg Utility

LiteWire

Mediacom Wisconsin LLC

MHTC - MHTC

MHTC - Mount Horeb Telephone Company
dba MHTC

Richland-Grant Telephone Company

TDS Telecom

T-Mobile US

United States Cellular Corporation

UpNetWI

Verizon

Wisconsin Broadband Affordability- Plan Cost

'Broadband service' = an internet service with a minimum speed 100/20 Mbps

ISPs in Wisconsin: 126

ISPs in Iowa County : 19

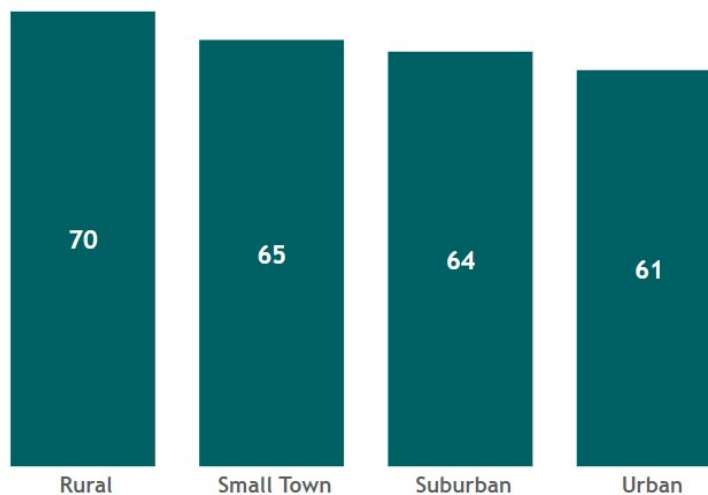
State Minimum Broadband Monthly Price Range
\$ 49.95 - \$ 156.50

State Average of Minimum Broadband Price/ Month
\$64.85

WI Household (HH) Median Income
\$67,080

AFFORDABILITY CRITERIA:
1.17% of Household Income

WI Average Minimum Broadband Price/ Month
(in \$) by Urbanicity



Source: Service offerings from ISPs representing 2,200 price offerings across all counties.

HH annual income-range (\$)	Broadband Plan* monthly cost
less than \$15K	less than \$15
\$15K - \$24K	\$15 - \$24
\$25K - \$39K	\$25 - \$38
\$40K - \$54K	\$39 - \$52
\$55K - \$69K	\$53 - \$67
\$70K - \$84K	\$68 - \$81
\$85K - \$99K	\$82 - \$96
\$100K - \$150K	\$97 - \$146
\$150K+	\$147+

* Broadband plan: is a plan providing internet service of a minimum speed of 100/20Mbps

The commonly accepted Broadband cost-burden threshold's income (see worldwide affordability target by 2025)

Iowa County

Average of Minimum Broadband Price/ Month

\$ 62.83

Iowa County

Household (HH) Median Income

\$ 68,714

Wisconsin HHs: 2,401,818

Iowa County HHs: 9,811

Source: ACS 5y 2017-2021