

Wisconsin Broadband Access- Serviceable Locations (BSL)

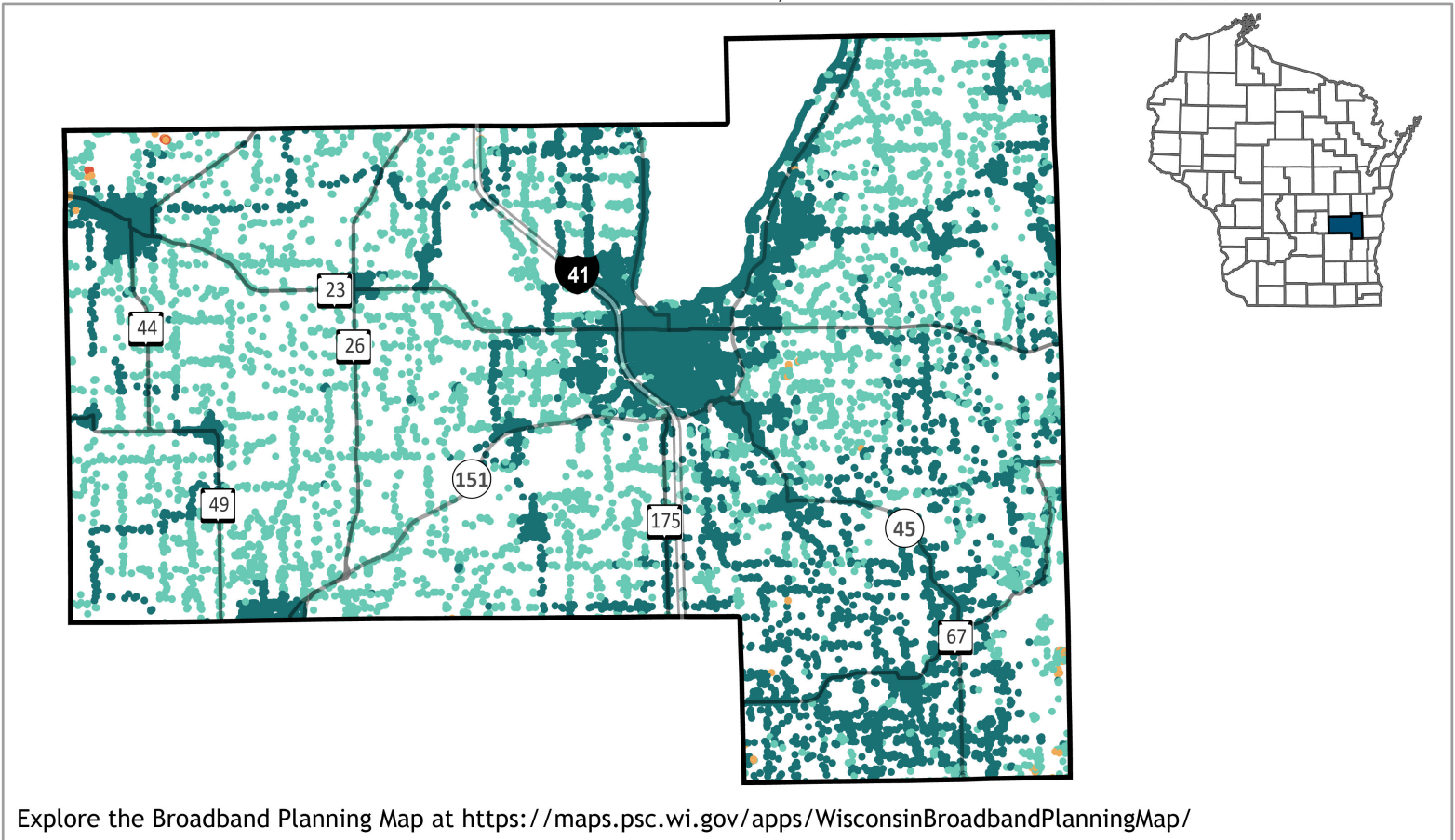
Fond du Lac County



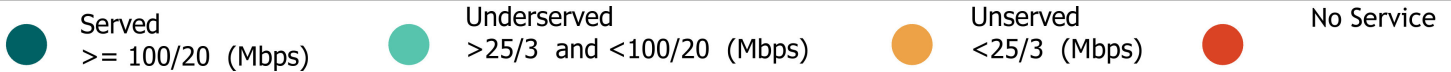
Total BSLs **40,776**

Underserved,
Unservd and No
Service Count **6,407**

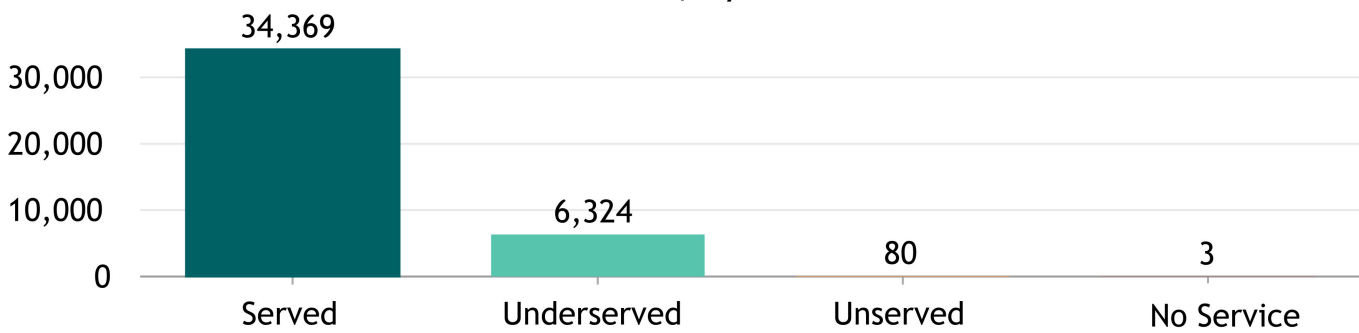
Source: FCC Broadband Data Collection BSL Service Status as of June 30, 2023



Explore the Broadband Planning Map at <https://maps.psc.wi.gov/apps/WisconsinBroadbandPlanningMap/>

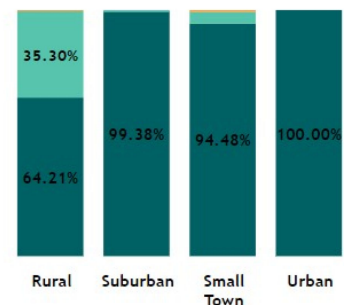


BSL count, by service status



"Broadband service" = an internet service with a minimum speed 100/20 Mbps

% of BSLs, by urbanicity type, by service status



Note: For counties having 100% BSL in the same urbanicity type only one bar is displayed.

Wisconsin Broadband- Enforceable Funding Commitment

Fond Du Lac County



40,776

Count of Total BSLs

6,407

Count of Underserved, Unserved, and No Service BSLs

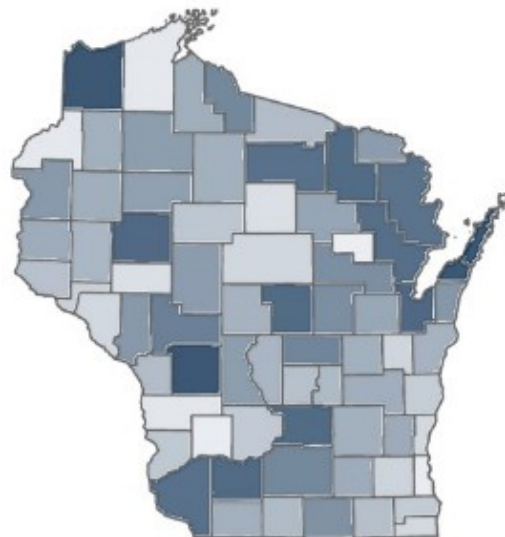
Source: FCC Broadband Data Collection BSL Service Status as of June 30, 2023

"Enforceable Funding Commitment", (EFC) for the purposes of BEAD is any "in progress" award that will build service of at least 100/20 to all locations by either a wireline cable or fiber connection, or a licensed fixed wireless connection. This includes a subset of state awards, all ARPA awards, all USDA Reconnect awards, RDOF, and E-ACAM.

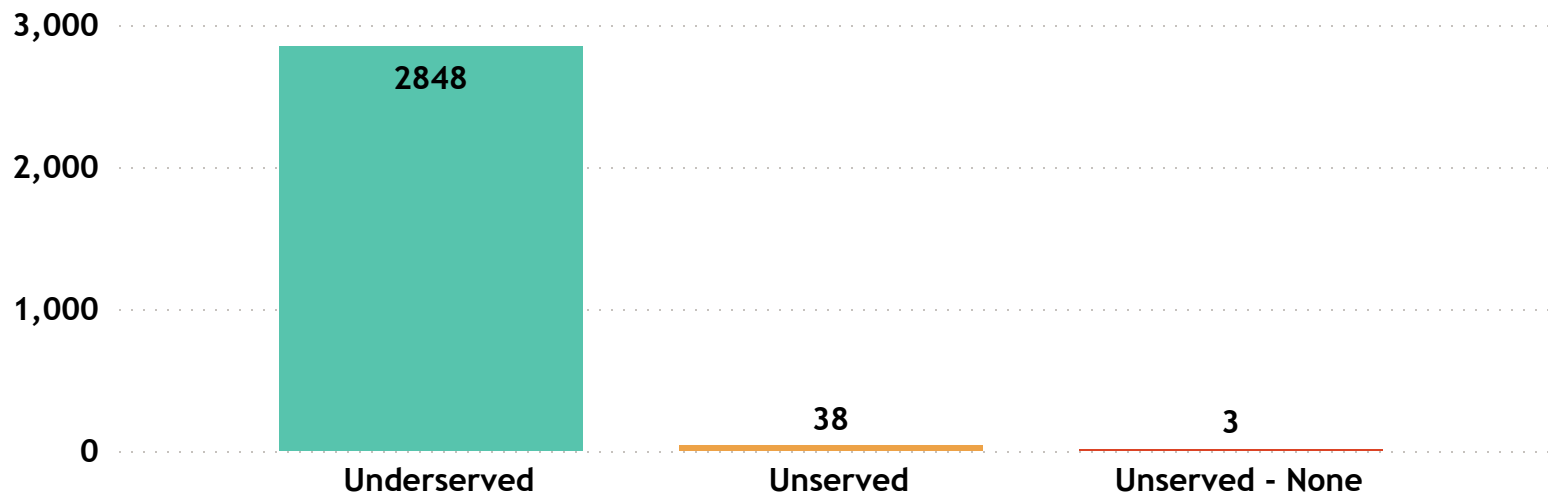
Estimated Underserved, Unserved and No Service Locations without Enforceable Funding Commitment

2,889

Estimated Underserved, Unserved and No Service Locations without EFC (count of locations **min** to **max**)



Estimated Underserved, Unserved, and No Service locations without EFC



Fond du Lac County

FCC service as of December 31, 2022

15

ISP

Astrea
AT&T Inc
Bertram Internet
Brightspeed
Bug Tussel Wireless LLC
CenturyLink (owned by Lumen)
Charter Communications Inc
Consolidated Communications, Fidium
Ethoplex
Frontier
Northern Telephone & Data
TDS Telecom
T-Mobile US
United States Cellular Corporation
Verizon

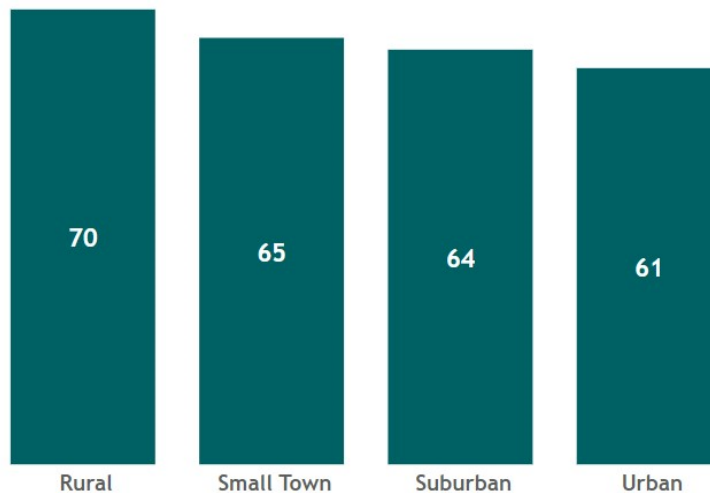
Wisconsin Broadband Affordability- Plan Cost

'Broadband service' = an internet service with a minimum speed 100/20 Mbps

ISPs in Wisconsin: 126

ISPs in Fond Du Lac County: 15

WI Average Minimum Broadband Price/ Month (in \$) by Urbanicity



State Minimum Broadband Monthly Price Range
\$ 49.95 - \$ 156.50

State Average of Minimum Broadband Price/ Month
\$64.85

WI Household (HH) Median Income
\$67,080

Source: Service offerings from ISPs representing 2,200 price offerings across all counties.

AFFORDABILITY CRITERIA:
1.17% of Household Income

| HH annual income-range (\$) | Broadband Plan* monthly cost |
|-----------------------------|------------------------------|
| less than \$15K | less than \$15 |
| \$15K - \$24K | \$15 - \$24 |
| \$25K - \$39K | \$25 - \$38 |
| \$40K - \$54K | \$39 - \$52 |
| \$55K - \$69K | \$53 - \$67 |
| \$70K - \$84K | \$68 - \$81 |
| \$85K - \$99K | \$82 - \$96 |
| \$100K - \$150K | \$97 - \$146 |
| \$150K+ | \$147+ |

* Broadband plan: is a plan providing internet service of a minimum speed of 100/20Mbps

The commonly accepted Broadband cost-burden threshold's income (see worldwide affordability target by 2025)

Fond Du Lac County

Average of Minimum Broadband Price/ Month

\$ 61.10

Fond Du Lac County

Household (HH) Median Income

\$ 64,147

Wisconsin HHs: 2,401,818

Fond Du Lac HHs: 41,890

Source: ACS 5y 2017-2021