

STATE PRIORITY CORRIDORS

EXISTING ATC OR XCEL TRANSMISSION LINES

69 kV

69 kV Underground

138 kV

161 kV

345 kV

OTHER EXISTING TRANSMISSION LINES

69 kV

161 kV

Interstate, US or State Highway

Approximate Gas Pipeline

Railroad

State/County Trail

Approved Hampton-Rochester-La Crosse 345 kV Transmission Project

PROJECT RELATED DATA

Segment N

Segment O

Northern Route
(Segments A, D, E, G, H, J, K, M, N, P, P-East)

Southern Route
(Segments B-North, B, C, F, G, I, J, L, M, O)

Sub-Segment Node

Route Segment ID

Sub-Segment ID

Conceptual Pole Locations in or Within 50' of a Wetland*

WETLANDS

Delineated Wetlands

Wetland ID

100 Year Floodplain

500 Year Floodplain

WI Wetland Inventory

Wetland Code

Off Right-of-Way Construction Access

Briggs Road Substation

NRCS SOIL SURVEY DATA

Non-Hydric Soils

Hydric Soils

Possible Hydric Inclusions

Soil Mapping Unit

Temporary Clear Span Bridge

Delineated Waterway

Area A

Waterway ID

WDNR Stream

Open Water

County Boundary

City/Village/Town Boundary

North Arrow

Scale Bar

ATC

Xcel Energy

**APPENDIX A FIGURE 4B
ENVIRONMENTAL FEATURE AND
ACCESS PLAN
Southern Route - Segment O
BADGER COULEE
TRANSMISSION LINE PROJECT**

OCTOBER 2013

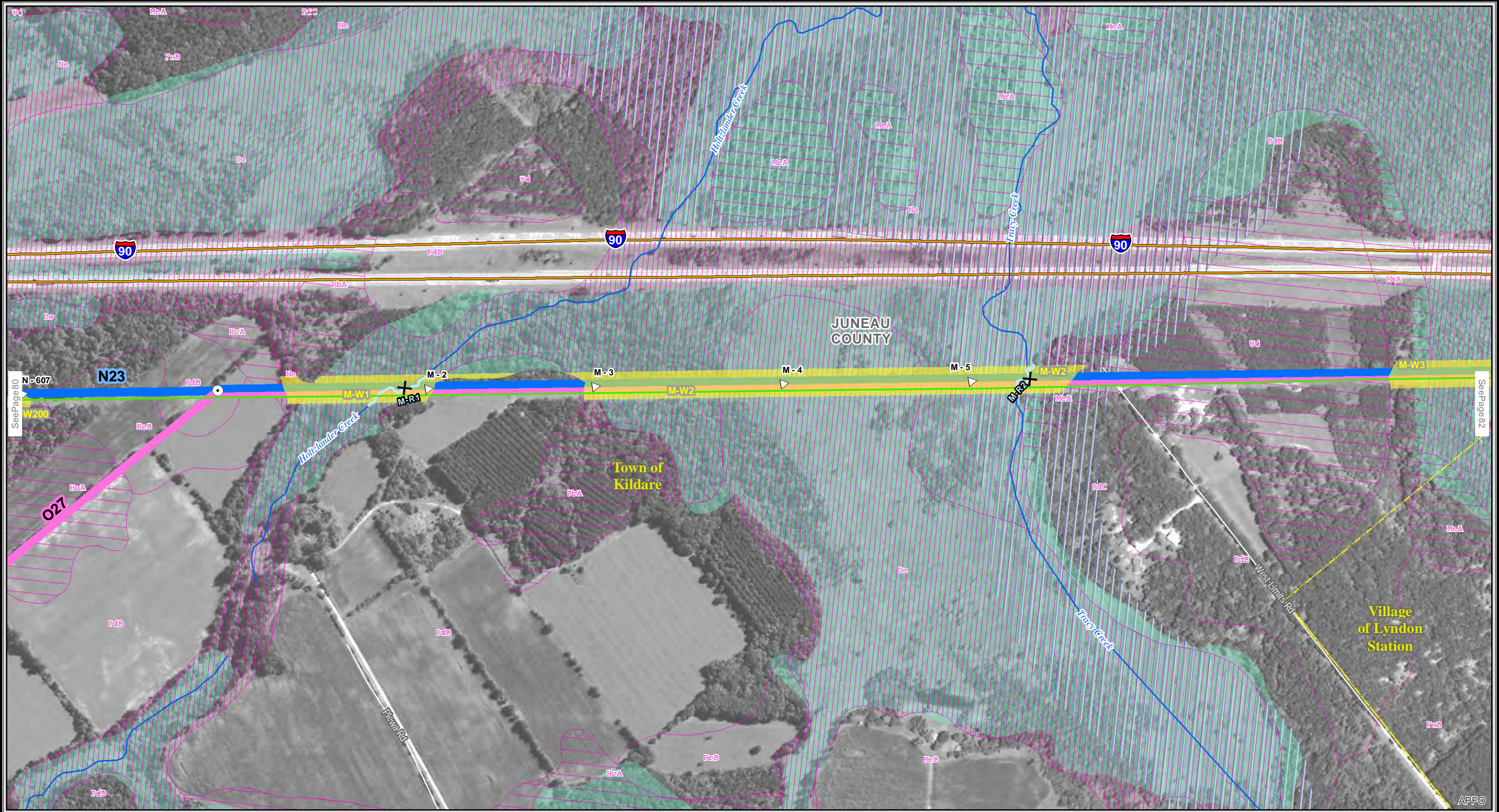
MAP A4-B080

PAGE 080 OF 154

APPENDIX A

FIGURE 4B-ENVIRONMENTAL FEATURES AND ACCESS PLAN

SOUTHERN ROUTE



STATE PRIORITY CORRIDORS

EXISTING ATC OR XCEL TRANSMISSION LINES

Substation

69 kV

69 kV Underground

138 kV

161 kV

345 kV

OTHER EXISTING TRANSMISSION LINES

Substation

69 kV

161 kV

Interstate, US or State Highway

Approximate Gas Pipeline

Railroad

State/County Trail

Approved Hampton-Rochester-La Crosse 345 kV Transmission Project

PROJECT RELATED DATA

Segment N Northern Route
(Segments A, D, E, G, H, J, K, M, N, P, P-East)

Segment O Southern Route
(Segments B-North, B, C, F, G, I, J, L, M, O)

Sub-Segment Node

Route Segment ID

Sub-Segment ID

Conceptual Pole Locations in or Within 50' of a Wetland*

Off Right-of-Way Construction Access

Briggs Road Substation

NRCS SOIL SURVEY DATA

Non-Hydric Soils

Hydric Soils

Possible Hydric Inclusions

Soil Mapping Unit

WETLANDS

Delineated Wetlands

Wetland ID

100 Year Floodplain

500 Year Floodplain

WI Wetland Inventory

Wetland Code

Temporary Clear Span Bridge

Delineated Waterway

Area A Waterway ID

WDNR Stream

Open Water

County Boundary

City/Village/Town Boundary

0 200 400 Feet

**APPENDIX A FIGURE 4B
ENVIRONMENTAL FEATURE AND
ACCESS PLAN
Southern Route - Segment M
BADGER COULEE
TRANSMISSION LINE PROJECT**

OCTOBER 2013

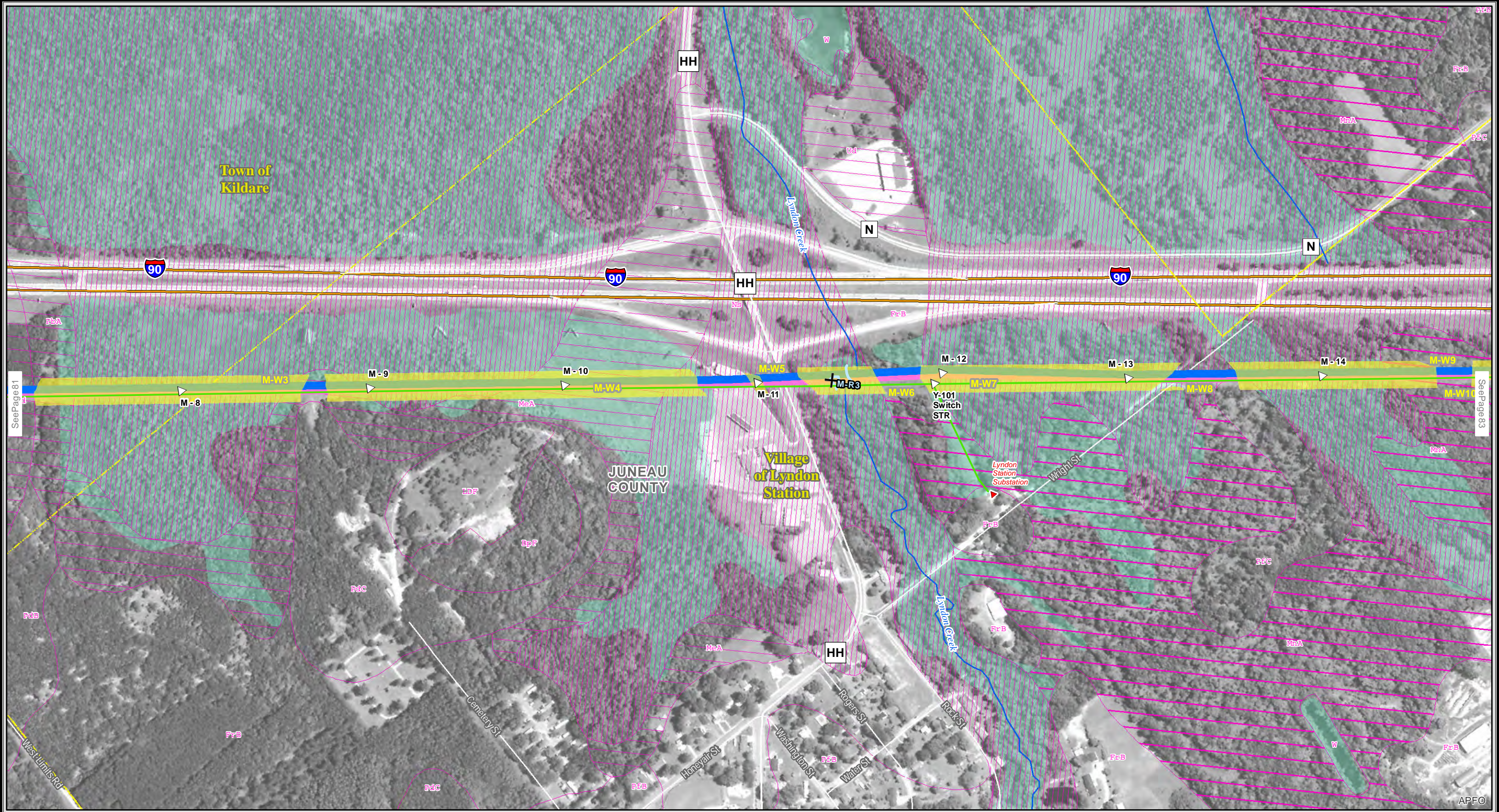
MAP A4-B081

PAGE 081 OF 154

APPENDIX A

FIGURE 4B-ENVIRONMENTAL FEATURES AND ACCESS PLAN

SOUTHERN ROUTE



STATE PRIORITY CORRIDORS

EXISTING ATC OR XCEL TRANSMISSION LINES

- Substation
- 69 kV
- 69 kV Underground
- 138 kV
- 161 kV
- 345 kV

OTHER EXISTING TRANSMISSION LINES

- Substation
- 69 kV
- 161 kV

Interstate, US or State Highway

Approximate Gas Pipeline

Railroad

State/County Trail

Approved Hampton-Rochester-La Crosse 345 kV Transmission Project

PROJECT RELATED DATA

Segment N Northern Route
(Segments A, D, E, G, H, J, K, M, N, P, P-East)

Segment O Southern Route
(Segments B-North, B, C, F, G, I, J, L, M, O)

Sub-Segment Node

Route Segment ID

Sub-Segment ID

Conceptual Pole Locations in or Within 50' of a Wetland*

* Proposed Poles are APPROXIMATE and are subject to change. Final pole placement will not be determined until detailed engineering is complete for the ordered route.

Off Right-of-Way Construction Access

Briggs Road Substation

NRCS SOIL SURVEY DATA

- Non-Hydric Soils
- Hydric Soils
- Possible Hydric Inclusions
- SaA - Soil Mapping Unit

WETLANDS

- Delineated Wetlands
- Area A - Wetland ID
- 100 Year Floodplain
- 500 Year Floodplain
- WI Wetland Inventory
- Wetland Code

Temporary Clear Span Bridge

Delineated Waterway

Area A - Waterway ID

WDNR Stream

Open Water

County Boundary

City/Village/Town Boundary

Scale: 0 200 400 Feet

ATC AMERICAN TRANSMISSION COMPANY

Xcel Energy

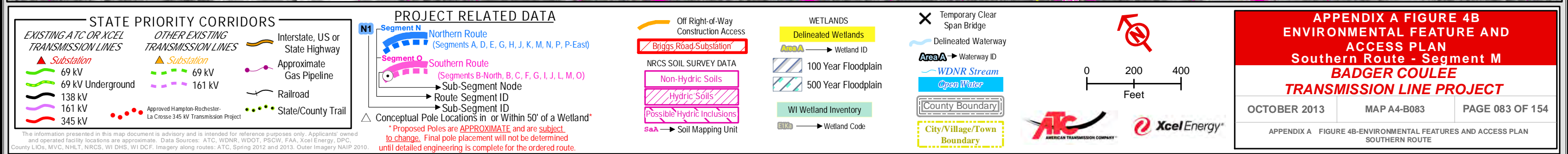
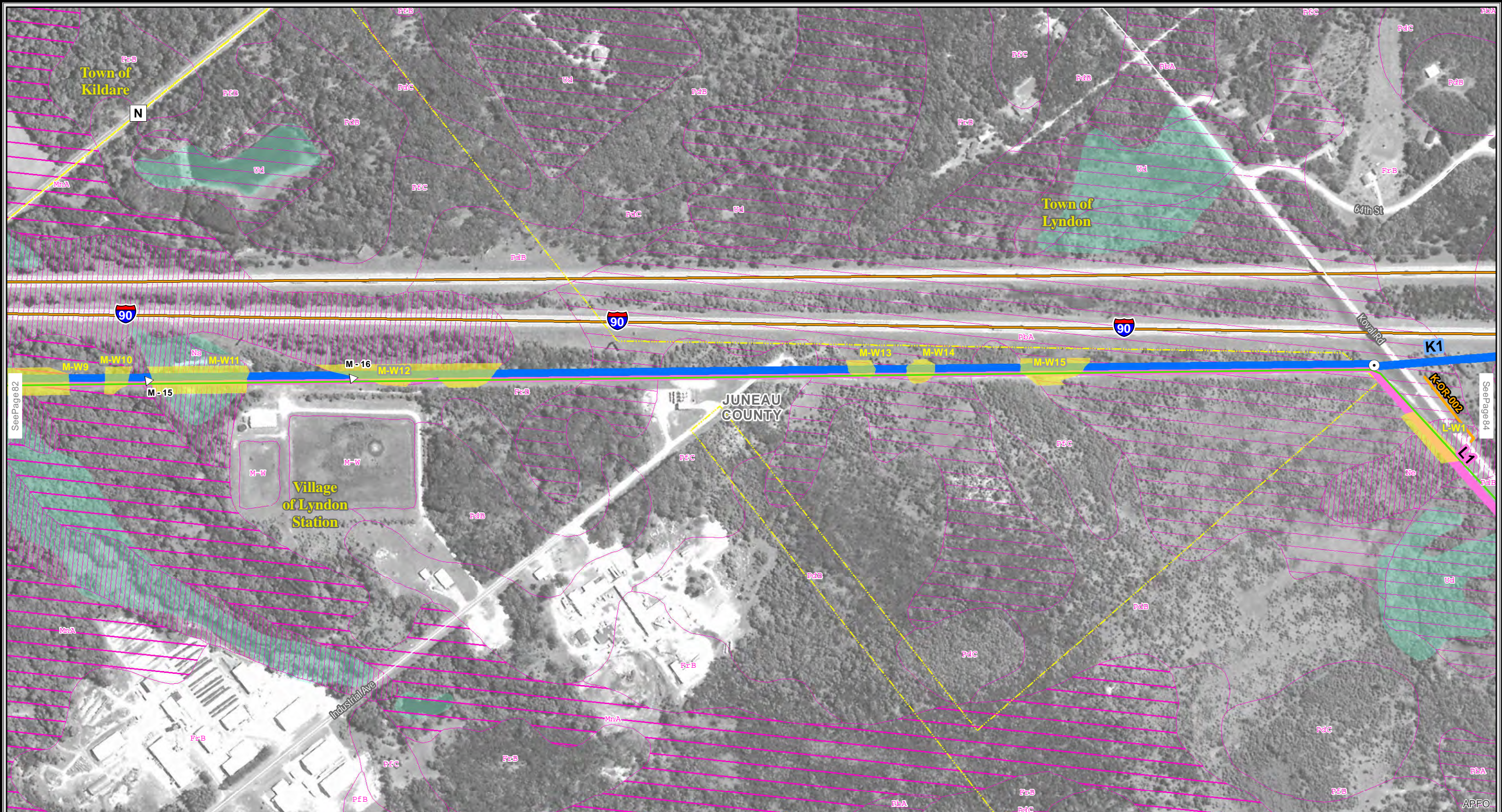
APPENDIX A FIGURE 4B ENVIRONMENTAL FEATURE AND ACCESS PLAN Southern Route - Segment M BADGER COULEE TRANSMISSION LINE PROJECT

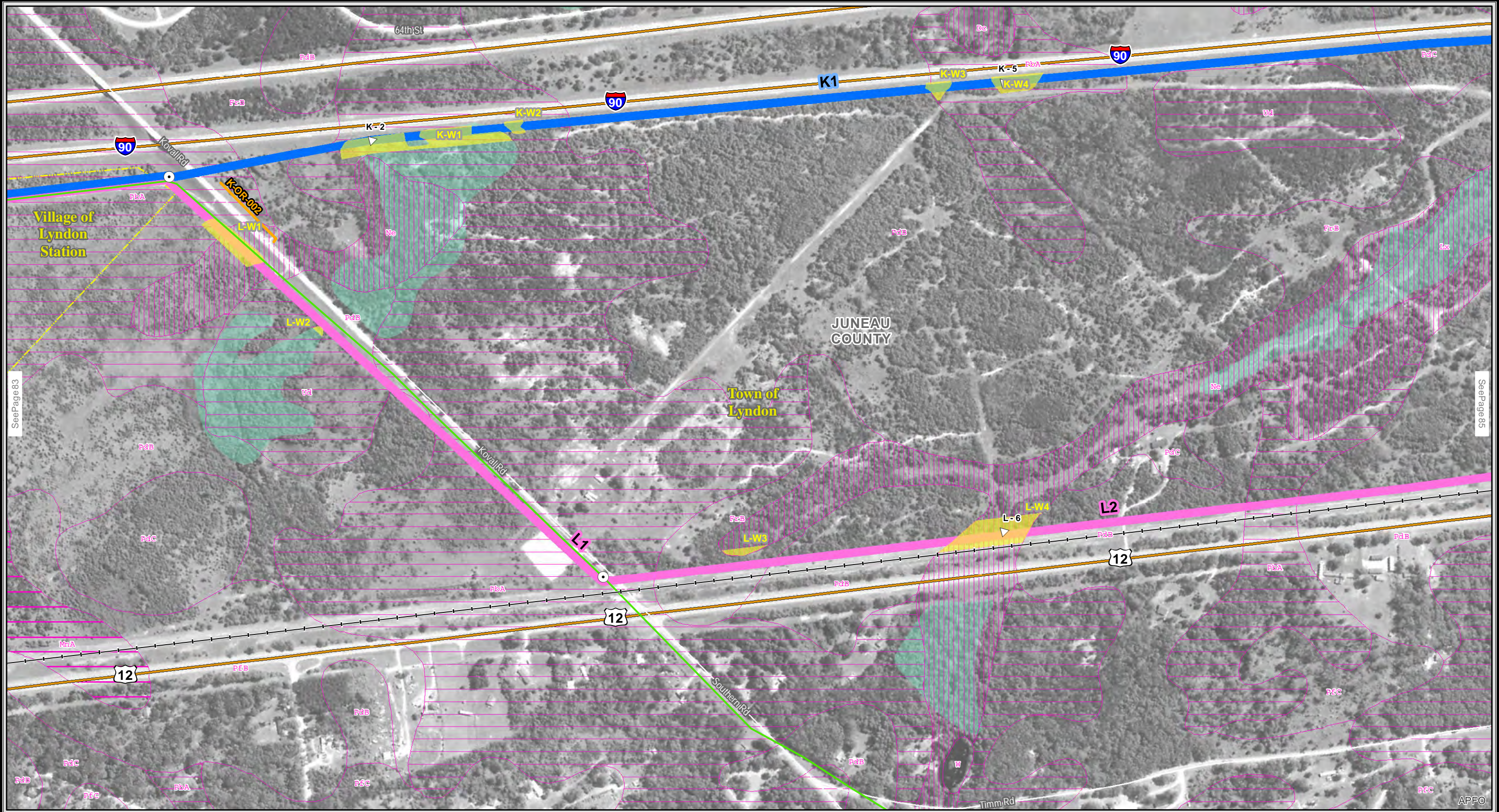
OCTOBER 2013

MAP A4-B082

PAGE 082 OF 154

APPENDIX A FIGURE 4B-ENVIRONMENTAL FEATURES AND ACCESS PLAN SOUTHERN ROUTE





STATE PRIORITY CORRIDORS

EXISTING ATC OR XCEL TRANSMISSION LINES

Substation

69 kV

69 kV Underground

138 kV

161 kV

345 kV

Approved Hampton-Rochester-La Crosse 345 kV Transmission Project

OTHER EXISTING TRANSMISSION LINES

Substation

69 kV

161 kV

Interstate, US or State Highway

Approximate Gas Pipeline

Railroad

State/County Trail

PROJECT RELATED DATA

Segment N

Segment O

Segment P

Northern Route

Southern Route

(Segments A, D, E, G, H, J, K, M, N, P, P-East)

(Segments B-North, B, C, F, G, I, J, L, M, O)

Sub-Segment Node

Route Segment ID

Sub-Segment ID

Conceptual Pole Locations in or Within 50' of a Wetland*

Off Right-of-Way Construction Access

Briggs Road Substation

NRCS SOIL SURVEY DATA

Non-Hydric Soils

Hydric Soils

Possible Hydric Inclusions

SaA - Soil Mapping Unit

WETLANDS

Delineated Wetlands

Area A - Wetland ID

100 Year Floodplain

500 Year Floodplain

WI Wetland Inventory

Wetland Code

Temporary Clear Span Bridge

Delineated Waterway

Area A - Waterway ID

WDNR Stream

Open Water

County Boundary

City/Village/Town Boundary

0 200 400 Feet

ATC AMERICAN TRANSMISSION COMPANY

Xcel Energy

APPENDIX A FIGURE 4B ENVIRONMENTAL FEATURE AND ACCESS PLAN

Southern Route - Segment L

BADGER COULEE TRANSMISSION LINE PROJECT

OCTOBER 2013

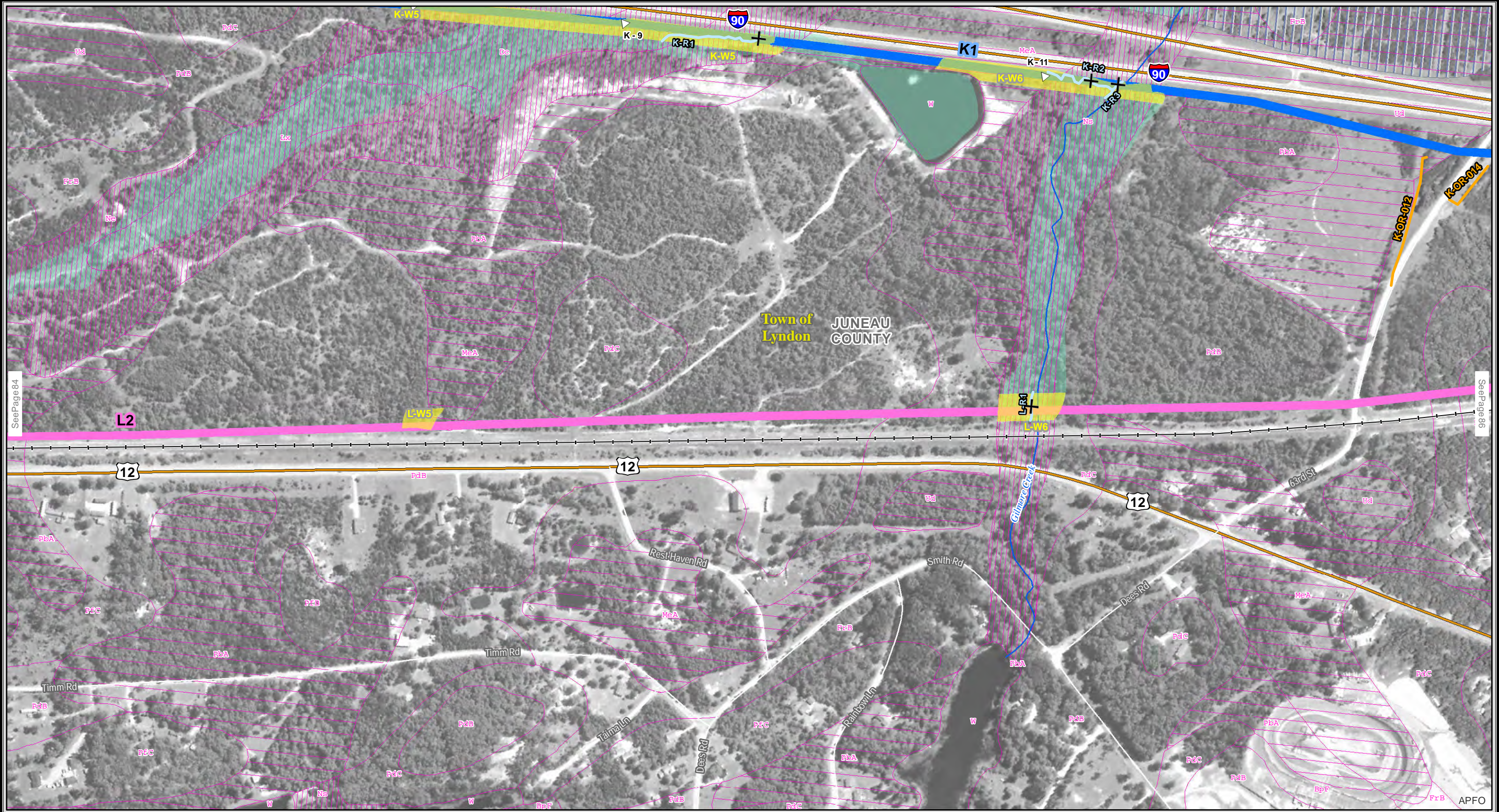
MAP A4-B084

PAGE 084 OF 154

APPENDIX A FIGURE 4B-ENVIRONMENTAL FEATURES AND ACCESS PLAN

SOUTHERN ROUTE

The information presented in this map document is advisory and is intended for reference purposes only. Applicants' owned and operated facility locations are approximate. Data Sources: ATC, WDNR, WDOT, PSCW, FAA, Xcel Energy, DPC, County LIOs, MVC, NHLT, NRCS, WI DHS, WI DCF. Imagery along routes: ATC, Spring 2012 and 2013. Outer Imagery NAIP 2010.



STATE PRIORITY CORRIDORS

EXISTING ATC OR XCEL TRANSMISSION LINES

Substation

69 kV

69 kV Underground

138 kV

161 kV

345 kV

OTHER EXISTING TRANSMISSION LINES

Substation

69 kV

161 kV

Interstate, US or State Highway

Approximate Gas Pipeline

Railroad

State/County Trail

Approved Hampton-Rochester-La Crosse 345 kV Transmission Project

PROJECT RELATED DATA

Segment N Northern Route (Segments A, D, E, G, H, J, K, M, N, P, P-East)

Segment O Southern Route (Segments B-North, B, C, F, G, I, J, L, M, O)

Sub-Segment Node

Route Segment ID

Sub-Segment ID

Conceptual Pole Locations in or Within 50' of a Wetland*

Off Right-of-Way Construction Access

Briggs Road Substation

NRCS SOIL SURVEY DATA

Non-Hydric Soils

Hydric Soils

Possible Hydric Inclusions

SaA - Soil Mapping Unit

WETLANDS

Delineated Wetlands

Area A - Wetland ID

100 Year Floodplain

500 Year Floodplain

WI Wetland Inventory

Wetland Code

Temporary Clear Span Bridge

Delineated Waterway

Area A - Waterway ID

WDNR Stream

Open Water

County Boundary

City/Village/Town Boundary

0 200 400 Feet

ATC AMERICAN TRANSMISSION COMPANY

Xcel Energy

APPENDIX A FIGURE 4B ENVIRONMENTAL FEATURE AND ACCESS PLAN Southern Route - Segment L BADGER COULEE TRANSMISSION LINE PROJECT

OCTOBER 2013

MAP A4-B085

PAGE 085 OF 154

APPENDIX A FIGURE 4B-ENVIRONMENTAL FEATURES AND ACCESS PLAN SOUTHERN ROUTE

The information presented in this map document is advisory and is intended for reference purposes only. Applicants' owned and operated facility locations are approximate. Data Sources: ATC, WDNR, WDOT, PSCW, FAA, Xcel Energy, DPC, County LIOs, MVC, NHLT, NRCS, WI DHS, WI DCF. Imagery along routes: ATC, Spring 2012 and 2013. Outer Imagery NAIP 2010.



STATE PRIORITY CORRIDORS

EXISTING ATC OR XCEL TRANSMISSION LINES

Substation

69 kV

69 kV Underground

138 kV

161 kV

345 kV

OTHER EXISTING TRANSMISSION LINES

Substation

69 kV

161 kV

Interstate, US or State Highway

Approximate Gas Pipeline

Railroad

State/County Trail

Approved Hampton-Rochester-La Crosse 345 kV Transmission Project

PROJECT RELATED DATA

Segment N Northern Route (Segments A, D, E, G, H, J, K, M, N, P, P-East)

Segment O Southern Route (Segments B-North, B, C, F, G, I, J, L, M, O)

Sub-Segment Node

Route Segment ID

Sub-Segment ID

Conceptual Pole Locations in or Within 50' of a Wetland*

Off Right-of-Way Construction Access

Briggs Road Substation

NRCS SOIL SURVEY DATA

Non-Hydric Soils

Hydric Soils

Possible Hydric Inclusions

SaA - Soil Mapping Unit

WETLANDS

Delineated Wetlands

Area A - Wetland ID

100 Year Floodplain

500 Year Floodplain

WI Wetland Inventory

ELA - Wetland Code

Temporary Clear Span Bridge

Delineated Waterway

Area A - Waterway ID

WDNR Stream

Open Water

County Boundary

City/Village/Town Boundary

0 200 400 Feet

ATC AMERICAN TRANSMISSION COMPANY

Xcel Energy

APPENDIX A FIGURE 4B ENVIRONMENTAL FEATURE AND ACCESS PLAN

Southern Route - Segment L

BADGER COULEE TRANSMISSION LINE PROJECT

OCTOBER 2013

MAP A4-B086

PAGE 086 OF 154

APPENDIX A

FIGURE 4B-ENVIRONMENTAL FEATURES AND ACCESS PLAN

SOUTHERN ROUTE

The information presented in this map document is advisory and is intended for reference purposes only. Applicants' owned and operated facility locations are approximate. Data Sources: ATC, WDNR, WDOT, PSCW, FAA, Xcel Energy, DPC, County LIOs, MVC, NHTL, NRCS, WI DHS, WI DCF. Imagery along routes: ATC, Spring 2012 and 2013. Outer Imagery NAIP 2010.



STATE PRIORITY CORRIDORS

EXISTING ATC OR XCEL TRANSMISSION LINES

Substation

69 kV

69 kV Underground

138 kV

161 kV

345 kV

Approved Hampton-Rochester-La Crosse 345 kV Transmission Project

OTHER EXISTING TRANSMISSION LINES

Substation

69 kV

161 kV

Interstate, US or State Highway

Approximate Gas Pipeline

Railroad

State/County Trail

PROJECT RELATED DATA

Segment N

Segment O

Northern Route

Southern Route

(Segments A, D, E, G, H, J, K, M, N, P, P-East)

(Segments B-North, B, C, F, G, I, J, L, M, O)

Sub-Segment Node

Route Segment ID

Sub-Segment ID

Conceptual Pole Locations in or Within 50' of a Wetland*

Off Right-of-Way Construction Access

Briggs Road Substation

NRCS SOIL SURVEY DATA

Non-Hydric Soils

Hydric Soils

Possible Hydric Inclusions

SaA - Soil Mapping Unit

WETLANDS

Delineated Wetlands

Wetland ID

100 Year Floodplain

500 Year Floodplain

WI Wetland Inventory

Wetland Code

Temporary Clear Span Bridge

Delineated Waterway

Waterway ID

WDNR Stream

Open Water

County Boundary

City/Village/Town Boundary

0 200 400 Feet

ATC AMERICAN TRANSMISSION COMPANY

Xcel Energy

APPENDIX A FIGURE 4B ENVIRONMENTAL FEATURE AND ACCESS PLAN

Southern Route - Segment L

BADGER COULEE

TRANSMISSION LINE PROJECT

OCTOBER 2013

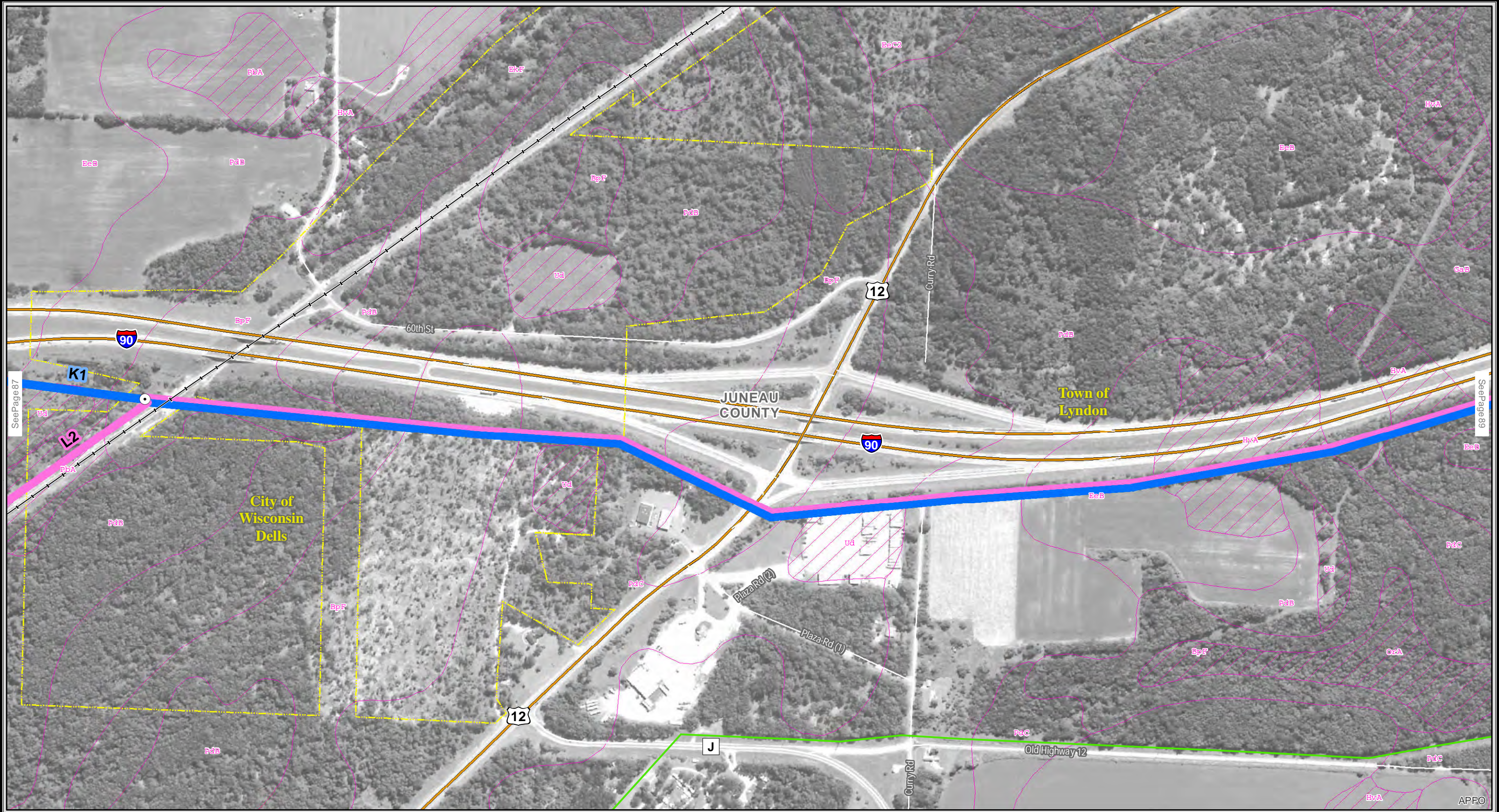
MAP A4-B087

PAGE 087 OF 154

APPENDIX A FIGURE 4B-ENVIRONMENTAL FEATURES AND ACCESS PLAN

SOUTHERN ROUTE

The information presented in this map document is advisory and is intended for reference purposes only. Applicants' owned and operated facility locations are approximate. Data Sources: ATC, WDNR, WDOT, PSCW, FAA, Xcel Energy, DPC, County LIOs, MVC, NHLT, NRCS, WI DHS, WI DCF. Imagery along routes: ATC, Spring 2012 and 2013. Outer Imagery NAIP 2010.



STATE PRIORITY CORRIDORS

EXISTING ATC OR XCEL TRANSMISSION LINES

Substation

69 kV

69 kV Underground

138 kV

161 kV

345 kV

OTHER EXISTING TRANSMISSION LINES

Substation

69 kV

161 kV

Interstate, US or State Highway

Approximate Gas Pipeline

Railroad

State/County Trail

Approved Hampton-Rochester-La Crosse 345 kV Transmission Project

PROJECT RELATED DATA

Segment N

Northern Route

(Segments A, D, E, G, H, J, K, M, N, P, P-East)

Segment O

Southern Route

(Segments B-North, B, C, F, G, I, J, L, M, O)

Sub-Segment Node

Route Segment ID

Sub-Segment ID

Conceptual Pole Locations in or Within 50' of a Wetland*

Off Right-of-Way Construction Access

Briggs Road Substation

NRCS SOIL SURVEY DATA

Non-Hydric Soils

Hydric Soils

Possible Hydric Inclusions

SaA

Soil Mapping Unit

WETLANDS

Delineated Wetlands

Area A

Wetland ID

100 Year Floodplain

500 Year Floodplain

WI Wetland Inventory

Wetland Code

Temporary Clear Span Bridge

Delineated Waterway

Area A

Waterway ID

WDNR Stream

Open Water

County Boundary

City/Village/Town Boundary

0 200 400 Feet

APPENDIX A FIGURE 4B ENVIRONMENTAL FEATURE AND ACCESS PLAN

Southern Route - Segment J

BADGER COULEE

TRANSMISSION LINE PROJECT

OCTOBER 2013

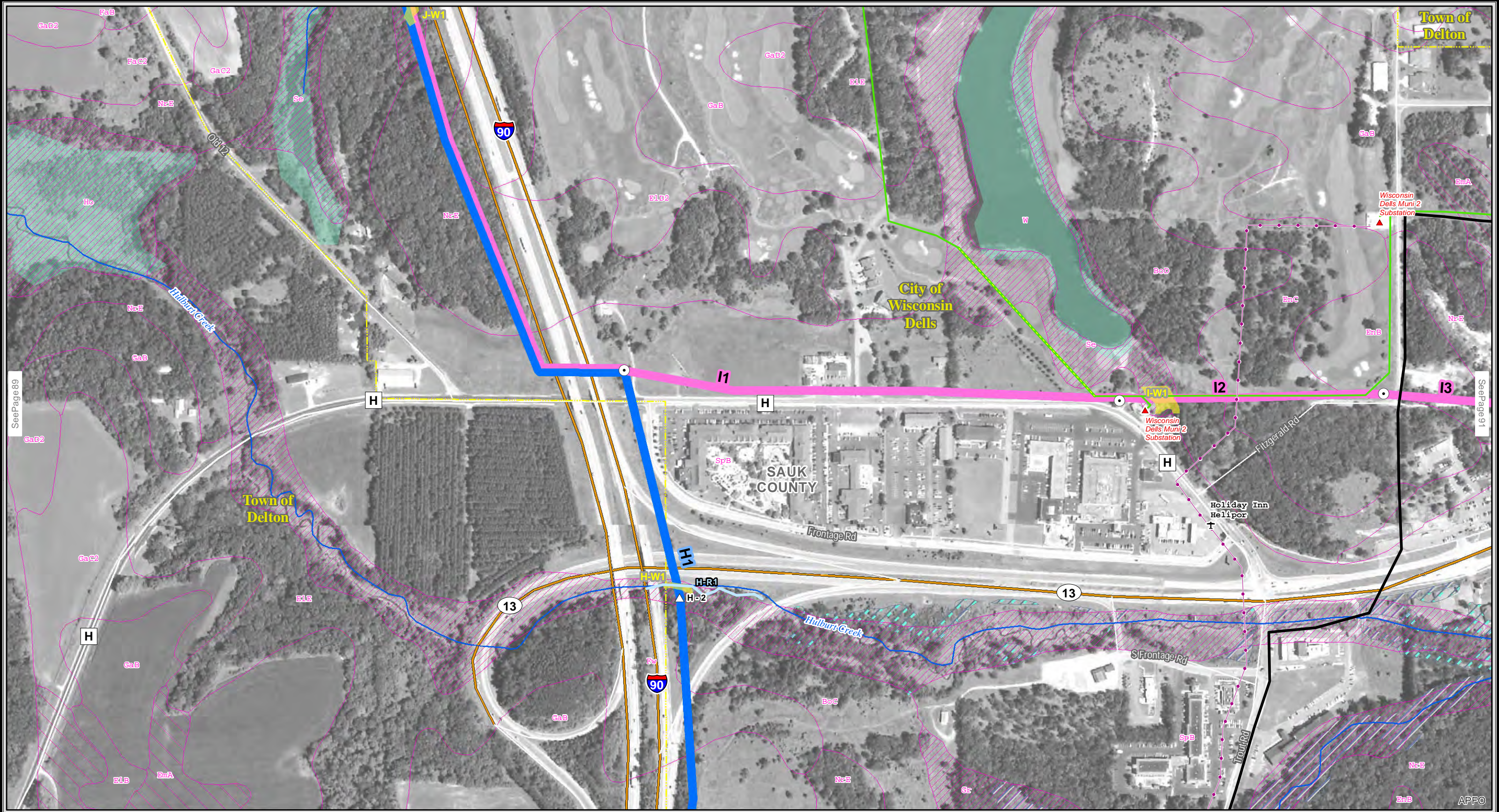
MAP A4-B088

PAGE 088 OF 154

APPENDIX A FIGURE 4B-ENVIRONMENTAL FEATURES AND ACCESS PLAN

SOUTHERN ROUTE

The information presented in this map document is advisory and is intended for reference purposes only. Applicants' owned and operated facility locations are approximate. Data Sources: ATC, WDNR, WDOT, PSCW, FAA, Xcel Energy, DPC, County LIOs, MVC, NHLT, NRCS, WI DHS, WI DCF. Imagery along routes: ATC, Spring 2012 and 2013. Outer Imagery NAIP 2010.



STATE PRIORITY CORRIDORS

EXISTING ATC OR XCEL TRANSMISSION LINES

69 kV

69 kV Underground

138 kV

161 kV

345 kV

OTHER EXISTING TRANSMISSION LINES

69 kV

161 kV

Interstate, US or State Highway

Approximate Gas Pipeline

Railroad

State/County Trail

Approved Hampton-Rochester-La Crosse 345 kV Transmission Project

PROJECT RELATED DATA

Segment N

Northern Route

(Segments A, D, E, G, H, J, K, M, N, P, P-East)

Segment O

Southern Route

(Segments B-North, B, C, F, G, I, J, L, M, O)

Sub-Segment Node

Route Segment ID

Sub-Segment ID

Conceptual Pole Locations in or Within 50' of a Wetland*

Off Right-of-Way Construction Access

Briggs Road Substation

NRCS SOIL SURVEY DATA

Non-Hydric Soils

Hydric Soils

Possible Hydric Inclusions

SaA

Soil Mapping Unit

WETLANDS

Delineated Wetlands

Area A

Wetland ID

100 Year Floodplain

500 Year Floodplain

WI Wetland Inventory

Wetland Code

Temporary Clear Span Bridge

Delineated Waterway

Area A

Waterway ID

WDNR Stream

Open Water

County Boundary

City/Village/Town Boundary

0

200

400

Feet

ATC

AMERICAN TRANSMISSION COMPANY

Xcel Energy

APPENDIX A FIGURE 4B ENVIRONMENTAL FEATURE AND ACCESS PLAN

Southern Route - Segment I

BADGER COULEE

TRANSMISSION LINE PROJECT

OCTOBER 2013

MAP A4-B090

PAGE 090 OF 154

APPENDIX A FIGURE 4B-ENVIRONMENTAL FEATURES AND ACCESS PLAN

SOUTHERN ROUTE

The information presented in this map document is advisory and is intended for reference purposes only. Applicants' owned and operated facility locations are approximate. Data Sources: ATC, WDNR, WDOT, PSCW, FAA, Xcel Energy, DPC, County LIOs, MVC, NHTL, NRCS, WI DHS, WI DCF. Imagery along routes: ATC, Spring 2012 and 2013. Outer Imagery NAIP 2010.