

STATE PRIORITY CORRIDORS

EXISTING ATC OR NSPW TRANSMISSION LINES

- Substation
- 69 kV
- 69 kV Underground
- 138 kV
- 161 kV
- 345 kV

OTHER EXISTING TRANSMISSION LINES

- Substation
- 69 kV
- 161 kV

Approved Hampton-Rochester-La Crosse 345 kV Transmission Project

Interstate, US or State Highway

Approximate Gas Pipeline

Railroad

State/County Trail

PROJECT RELATED DATA

Segment N

Segment O

Northern Route (Segments A, D, E, G, H, J, K, M, N, P)

Alternative Segment P-East

Southern Route (Segments B, C, F, G, I, J, L, M, O)

Alternative Segment B-North

Route Segment Node

Route Segment ID

Off Right-of-Way Construction Access

Required

Optional

Briggs Road Substation

Laydown Yard

PLACES OF INTEREST

- Campground
- Cemetery
- Church
- City Hall
- Clinic/Hospital
- Airport
- Park
- Golf Course
- Quarry/Mine
- School
- Communication Tower

Stream

Open Water

WDNR Wetlands

County Boundary

City/Village/Town Boundary

Tax Parcel

Tribal Land

0 200 400 Feet

ATC AMERICAN TRANSMISSION COMPANY

Xcel Energy

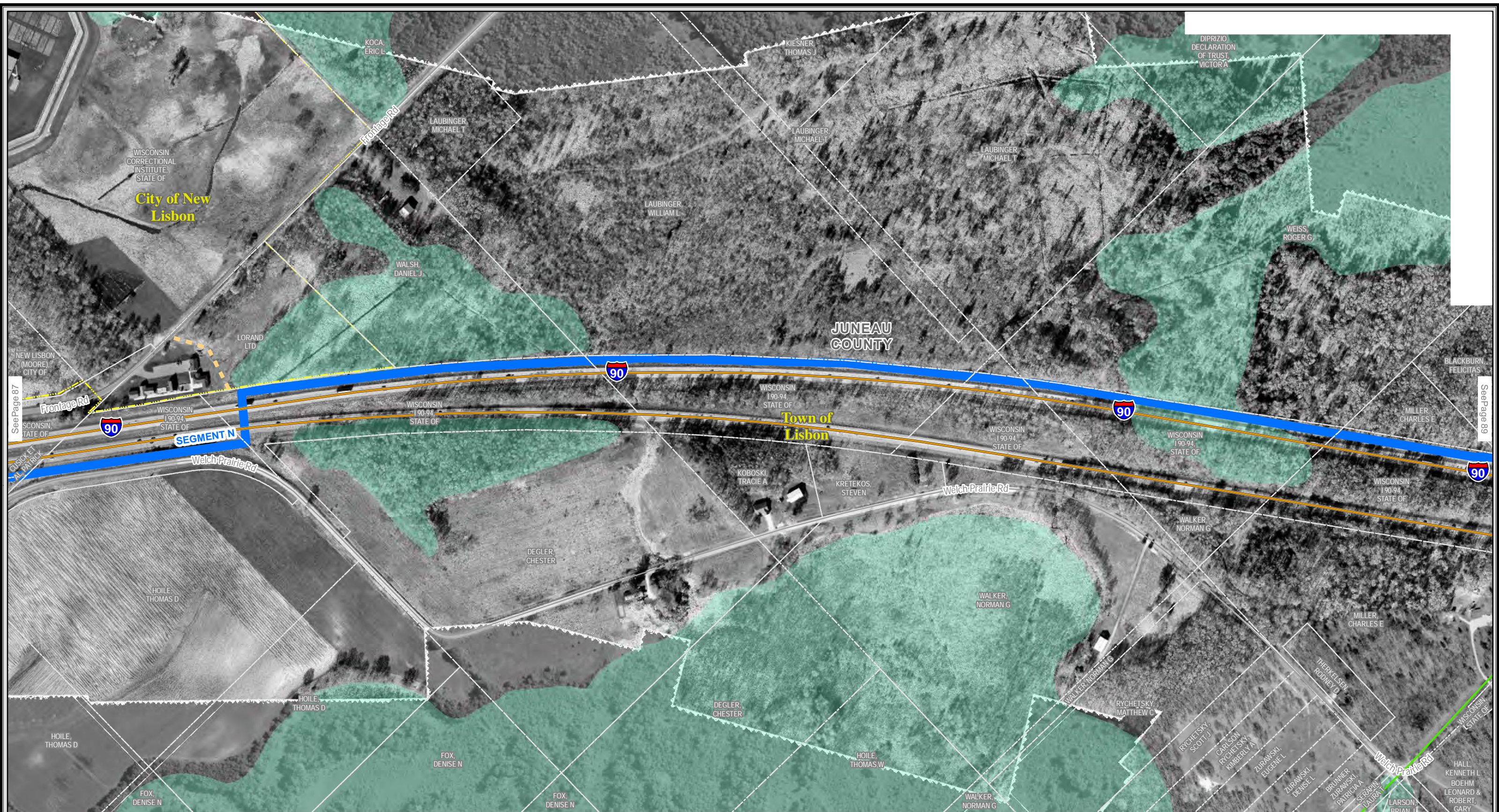
APPENDIX A FIGURE 3A PROJECT SUMMARY Northern Route - Segment N

BADGER COULEE 345 KV TRANSMISSION LINE PROJECT

OCTOBER 2013 MAP A3-A087 PAGE 087 OF 166

APPENDIX A FIGURE 3A-PROJECT SUMMARY NORTHERN ROUTE

The information presented in this map document is advisory and is intended for reference purposes only. Applicants' owned and operated facility locations are approximate. Data Sources: ATC, WDNR, WDOT, PSCW, FAA, Xcel Energy, DPC, County LIOs, MVC, NHLT, NRCS, WI DHS, WI DCF. Imagery along routes: ATC, Spring 2012 and 2013. Outer Imagery NAIP 2010.



STATE PRIORITY CORRIDORS

EXISTING ATC OR NSPW TRANSMISSION LINES

Substation

69 kV

69 kV Underground

138 kV

161 kV

345 kV

OTHER EXISTING TRANSMISSION LINES

Substation

69 kV

161 kV

Approved Hampton-Rochester-La Crosse 345 kV Transmission Project

Interstate, US or State Highway

Approximate Gas Pipeline

Railroad

State/County Trail

PROJECT RELATED DATA

Segment N

Northern Route (Segments A, D, E, G, H, J, K, M, N, P)

Alternative Segment P-East

Segment O

Southern Route (Segments B, C, F, G, I, J, L, M, O)

Alternative Segment B-North

Route Segment Node

Route Segment ID

Off Right-of-Way Construction Access

Required

Optional

Briggs Road Substation

Laydown Yard

PLACES OF INTEREST

Campground

Cemetery

Church

City Hall

Clinic/Hospital

Airport

Park

Golf Course

Quarry/Mine

School

Communication Tower

Stream

Open Water

WDNR Wetlands

County Boundary

City/Village/Town Boundary

Tax Parcel

Tribal Land

0 200 400 Feet

AMERICAN TRANSMISSION COMPANY

**APPENDIX A FIGURE 3A
PROJECT SUMMARY
Northern Route - Segment N**

**BADGER COULEE 345 KV
TRANSMISSION LINE PROJECT**

OCTOBER 2013

MAP A3-A088

PAGE 088 OF 166

APPENDIX A

FIGURE 3A-PROJECT SUMMARY
NORTHERN ROUTE



STATE PRIORITY CORRIDORS

EXISTING ATC OR NSPW TRANSMISSION LINES

Substation

69 kV

69 kV Underground

138 kV

161 kV

345 kV

OTHER EXISTING TRANSMISSION LINES

Substation

69 kV

161 kV

Interstate, US or State Highway

Approximate Gas Pipeline

Railroad

State/County Trail

Approved Hampton-Rochester-La Crosse 345 kV Transmission Project

PROJECT RELATED DATA

Segment N

Segment O

Northern Route (Segments A, D, E, G, H, J, K, M, N, P)

Alternative Segment P-East

Southern Route (Segments B, C, F, G, I, J, L, M, O)

Alternative Segment B-North

Route Segment Node

Route Segment ID

Off Right-of-Way Construction Access

Required

Optional

Briggs Road Substation

Laydown Yard

PLACES OF INTEREST

Campground

Cemetery

Church

City Hall

Clinic/Hospital

Airport

Park

Golf Course

Quarry/Mine

School

Communication Tower

Stream

Open Water

WDNR Wetlands

County Boundary

City/Village/Town Boundary

Tax Parcel

Tribal Land

0 200 400 Feet

ATC

AMERICAN TRANSMISSION COMPANY

Xcel Energy

APPENDIX A FIGURE 3A
PROJECT SUMMARY
Northern Route - Segment N

BADGER COULEE 345 KV
TRANSMISSION LINE PROJECT

OCTOBER 2013

MAP A3-A089

PAGE 089 OF 166

APPENDIX A FIGURE 3A-PROJECT SUMMARY
NORTHERN ROUTE

The information presented in this map document is advisory and is intended for reference purposes only. Applicants' owned and operated facility locations are approximate. Data Sources: ATC, WDNR, WDOT, PSCW, FAA, Xcel Energy, DPC, County LIOs, MVC, NHLT, NRCS, WI DHS, WI DCF. Imagery along routes: ATC, Spring 2012 and 2013. Outer Imagery NAIP 2010.



STATE PRIORITY CORRIDORS

EXISTING ATC OR NSPW TRANSMISSION LINES

Substation

69 kV

69 kV Underground

138 kV

161 kV

345 kV

OTHER EXISTING TRANSMISSION LINES

Substation

69 kV

161 kV

Interstate, US or State Highway

Approximate Gas Pipeline

Railroad

State/County Trail

Approved Hampton-Rochester-La Crosse 345 kV Transmission Project

PROJECT RELATED DATA

Segment N

Segment O

Northern Route (Segments A, D, E, G, H, J, K, M, N, P)

Alternative Segment P-East

Southern Route (Segments B, C, F, G, I, J, L, M, O)

Alternative Segment B-North

Route Segment Node

Route Segment ID

Off Right-of-Way Construction Access

Required

Optional

Briggs Road Substation

Laydown Yard

PLACES OF INTEREST

Campground

Cemetery

Church

City Hall

Clinic/Hospital

Airport

Park

Golf Course

Quarry/Mine

School

Communication Tower

Stream

Open Water

WDNR Wetlands

County Boundary

City/Village/Town Boundary

Tax Parcel

Tribal Land

0 200 400 Feet

ATC AMERICAN TRANSMISSION COMPANY

Xcel Energy

APPENDIX A FIGURE 3A
PROJECT SUMMARY
Northern Route - Segment N

BADGER COULEE 345 KV
TRANSMISSION LINE PROJECT

OCTOBER 2013

MAP A3-A090

PAGE 090 OF 166

APPENDIX A FIGURE 3A-PROJECT SUMMARY
NORTHERN ROUTE



STATE PRIORITY CORRIDORS

EXISTING ATC OR NSPW TRANSMISSION LINES

Substation

69 kV

69 kV Underground

138 kV

161 kV

345 kV

Approved Hampton-Rochester-La Crosse 345 kV Transmission Project

OTHER EXISTING TRANSMISSION LINES

Substation

69 kV

161 kV

Interstate, US or State Highway

Approximate Gas Pipeline

Railroad

State/County Trail

PROJECT RELATED DATA

Segment N

Segment O

Northern Route (Segments A, D, E, G, H, J, K, M, N, P)

Alternative Segment P-East

Southern Route (Segments B, C, F, G, I, J, L, M, O)

Alternative Segment B-North

Route Segment Node

Route Segment ID

Off Right-of-Way Construction Access

Required

Optional

Briggs Road Substation

Laydown Yard

PLACES OF INTEREST

Campground

Cemetery

Church

City Hall

Clinic/Hospital

Airport

Park

Golf Course

Quarry/Mine

School

Communication Tower

Stream

Open Water

WDNR Wetlands

County Boundary

City/Village/Town Boundary

Tax Parcel

Tribal Land

0 200 400 Feet

ATC

Xcel Energy

APPENDIX A FIGURE 3A
PROJECT SUMMARY
Northern Route - Segment N

BADGER COULEE 345 KV
TRANSMISSION LINE PROJECT

OCTOBER 2013

MAP A3-A091

PAGE 091 OF 166

APPENDIX A

FIGURE 3A-PROJECT SUMMARY
NORTHERN ROUTE



STATE PRIORITY CORRIDORS

EXISTING ATC OR NSPW TRANSMISSION LINES

Substation

69 kV

69 kV Underground

138 kV

161 kV

345 kV

OTHER EXISTING TRANSMISSION LINES

Substation

69 kV

161 kV

Interstate, US or State Highway

Approximate Gas Pipeline

Railroad

State/County Trail

Approved Hampton-Rochester-La Crosse 345 kV Transmission Project

PROJECT RELATED DATA

Segment N

Segment O

Northern Route (Segments A, D, E, G, H, J, K, M, N, P)

Alternative Segment P-East

Southern Route (Segments B, C, F, G, I, J, L, M, O)

Alternative Segment B-North

Route Segment Node

Route Segment ID

Off Right-of-Way Construction Access

Required

Optional

Briggs Road Substation

Laydown Yard

PLACES OF INTEREST

Campground

Cemetery

Church

City Hall

Clinic/Hospital

Airport

Park

Golf Course

Quarry/Mine

School

Communication Tower

Stream

Open Water

WDNR Wetlands

County Boundary

City/Village/Town Boundary

Tax Parcel

Tribal Land

0 200 400 Feet

ATC AMERICAN TRANSMISSION COMPANY

Xcel Energy

APPENDIX A FIGURE 3A PROJECT SUMMARY Northern Route - Segment N

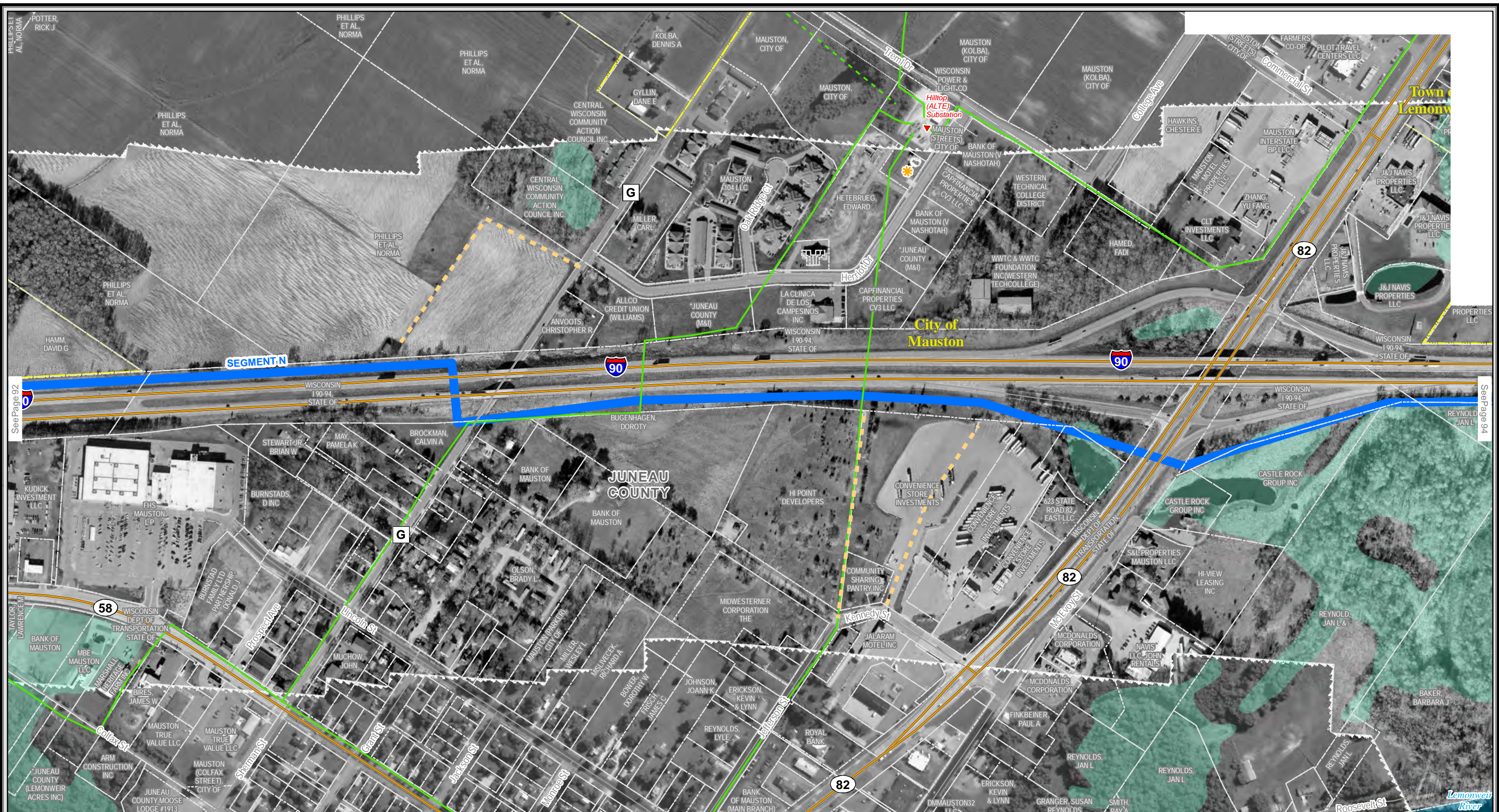
BADGER COULEE 345 KV TRANSMISSION LINE PROJECT

OCTOBER 2013

MAP A3-A092

PAGE 092 OF 166

APPENDIX A FIGURE 3A-PROJECT SUMMARY NORTHERN ROUTE



STATE PRIORITY CORRIDORS

EXISTING ATC OR NSPW TRANSMISSION LINES

Substation

69 kV

69 kV Underground

138 kV

161 kV

345 kV

Approved Hampton-Rochester-La Crosse 345 kV Transmission Project

OTHER EXISTING TRANSMISSION LINES

Substation

69 kV

161 kV

Interstate, US or State Highway

Approximate Gas Pipeline

Railroad

State/County Trail

THE INFORMATION PRESENTED IN THIS MAP DOCUMENT IS ADVISORY AND IS INTENDED FOR REFERENCE PURPOSES ONLY. APPLICANTS' OWNED AND OPERATED FACILITY LOCATIONS ARE APPROXIMATE. DATA SOURCES: ATC, WDNR, WDOT, PSCW, FAA, Xcel Energy, DPC, County LIOs, MVC, NHTL, NRCS, WI DHS, WI DCF. Imagery along routes: ATC, Spring 2012 and 2013. Outer Imagery NAIP 2010.

PROJECT RELATED DATA

Segment N

Segment O

Northern Route (Segments A, D, E, G, H, J, K, M, N, P)

Alternative Segment P-East

Southern Route (Segments B, C, F, G, I, J, L, M, O)

Alternative Segment B-North

Route Segment Node

Route Segment ID

Off Right-of-Way Construction Access

Required

Optional

Briggs Road Substation

Laydown Yard

PLACES OF INTEREST

Campground

Cemetery

Church

City Hall

Clinic/Hospital

Airport

Park

Golf Course

Quarry/Mine

School

Communication Tower

Stream

Open Water

WDNR Wetlands

County Boundary

City/Village/Town Boundary

Tax Parcel

Tribal Land

0 200 400 Feet

ATC

Xcel Energy

APPENDIX A FIGURE 3A
PROJECT SUMMARY
Northern Route - Segment N

BADGER COULEE 345 KV
TRANSMISSION LINE PROJECT

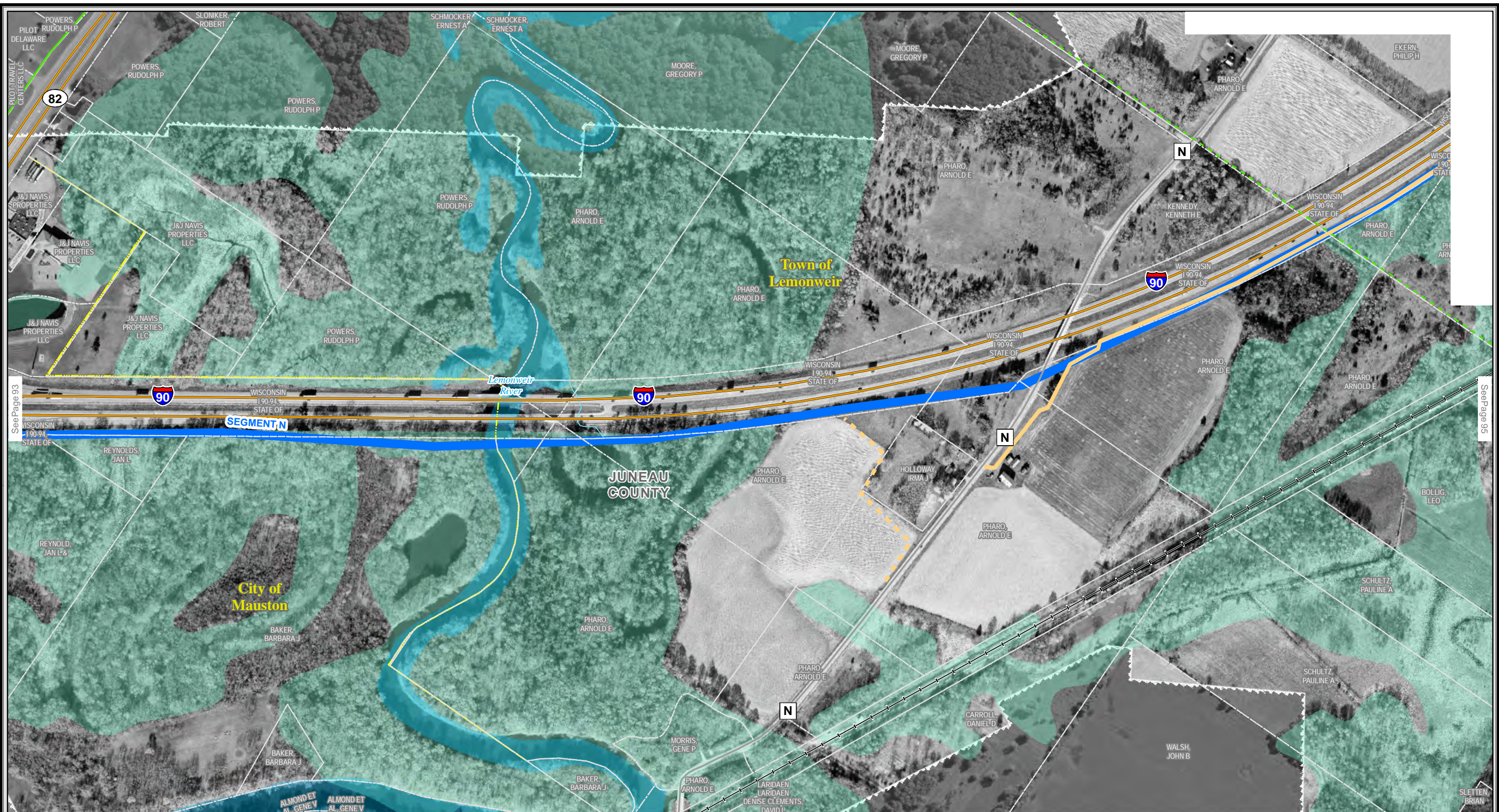
OCTOBER 2013

MAP A3-A093

PAGE 093 OF 166

APPENDIX A

FIGURE 3A-PROJECT SUMMARY
NORTHERN ROUTE



STATE PRIORITY CORRIDORS

EXISTING ATC OR NSPW TRANSMISSION LINES

Substation

69 kV

69 kV Underground

138 kV

161 kV

345 kV

OTHER EXISTING TRANSMISSION LINES

Substation

69 kV

161 kV

Interstate, US or State Highway

Approximate Gas Pipeline

Railroad

State/County Trail

Approved Hampton-Rochester-La Crosse 345 kV Transmission Project

PROJECT RELATED DATA

Segment N

Northern Route (Segments A, D, E, G, H, J, K, M, N, P)

Alternative Segment P-East

Segment O

Southern Route (Segments B, C, F, G, I, J, L, M, O)

Alternative Segment B-North

Route Segment Node

Route Segment ID

Off Right-of-Way Construction Access

Required

Optional

Briggs Road Substation

Laydown Yard

PLACES OF INTEREST

Campground

Cemetery

Church

City Hall

Clinic/Hospital

Airport

Park

Golf Course

Quarry/Mine

School

Communication Tower

Stream

Open Water

WDNR Wetlands

County Boundary

City/Village/Town Boundary

Tax Parcel

Tribal Land

0 200 400 Feet

ATC

AMERICAN TRANSMISSION COMPANY

Xcel Energy

APPENDIX A FIGURE 3A
PROJECT SUMMARY
Northern Route - Segment N

BADGER COULEE 345 KV
TRANSMISSION LINE PROJECT

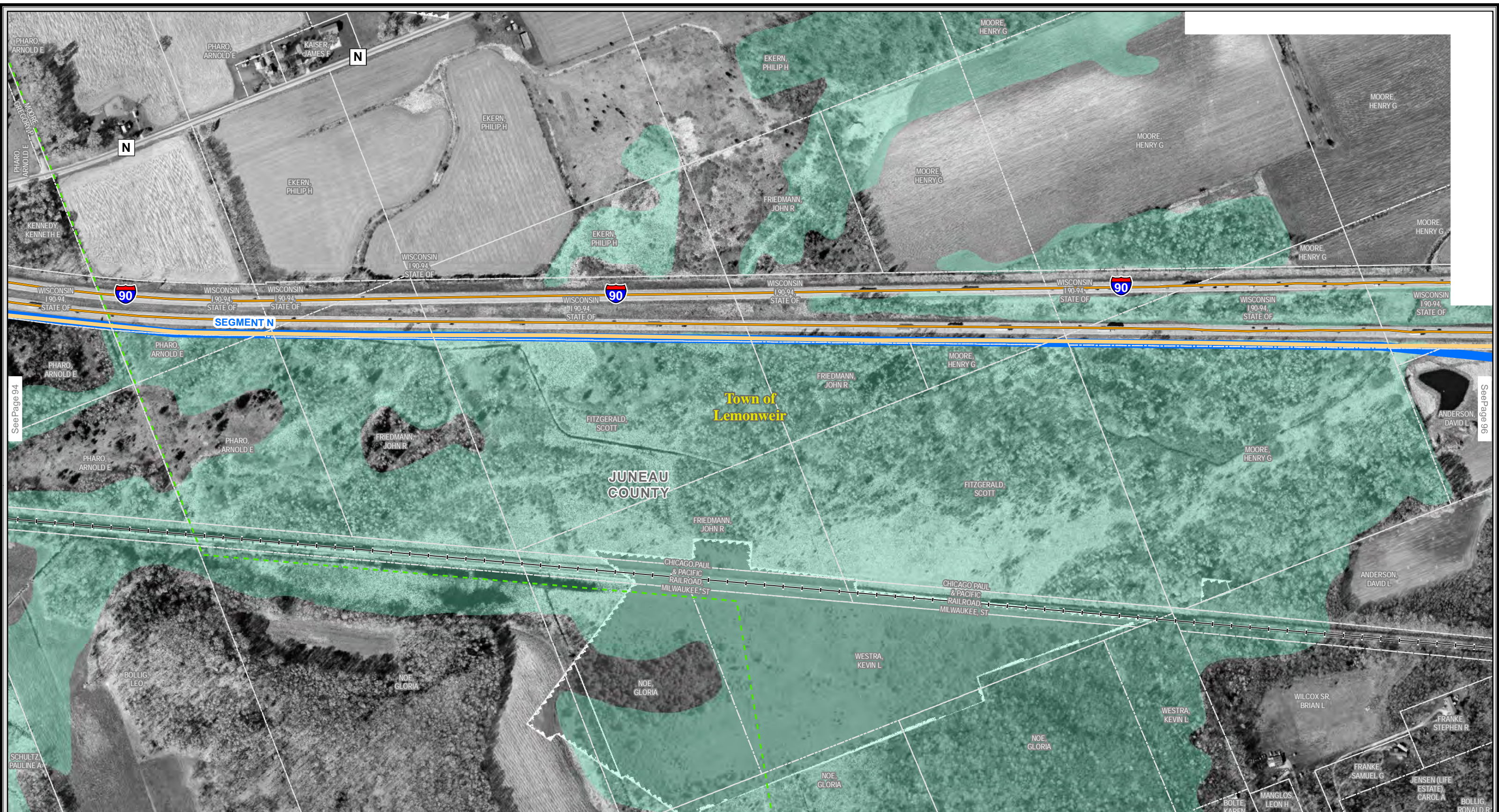
OCTOBER 2013

MAP A3-A094

PAGE 094 OF 166

APPENDIX A

FIGURE 3A-PROJECT SUMMARY
NORTHERN ROUTE



STATE PRIORITY CORRIDORS

EXISTING ATC OR NSPW TRANSMISSION LINES

Substation

69 kV

69 kV Underground

138 kV

161 kV

345 kV

Approved Hampton-Rochester-La Crosse 345 kV Transmission Project

OTHER EXISTING TRANSMISSION LINES

Substation

69 kV

161 kV

Interstate, US or State Highway

Approximate Gas Pipeline

Railroad

State/County Trail

PROJECT RELATED DATA

Segment N

Segment O

Northern Route (Segments A, D, E, G, H, J, K, M, N, P)

Alternative Segment P-East

Southern Route (Segments B, C, F, G, I, J, L, M, O)

Alternative Segment B-North

Route Segment Node

Route Segment ID

Off Right-of-Way Construction Access

Required

Optional

Briggs Road Substation

Laydown Yard

PLACES OF INTEREST

Campground

Cemetery

Church

City Hall

Clinic/Hospital

Airport

Park

Golf Course

Quarry/Mine

School

Communication Tower

Stream

Open Water

WDNR Wetlands

County Boundary

City/Village/Town Boundary

Tax Parcel

Tribal Land

0 200 400 Feet

ATC

AMERICAN TRANSMISSION COMPANY

Xcel Energy

APPENDIX A FIGURE 3A
PROJECT SUMMARY
Northern Route - Segment N

BADGER COULEE 345 KV
TRANSMISSION LINE PROJECT

OCTOBER 2013

MAP A3-A095

PAGE 095 OF 166

APPENDIX A FIGURE 3A-PROJECT SUMMARY
NORTHERN ROUTE

The information presented in this map document is advisory and is intended for reference purposes only. Applicants' owned and operated facility locations are approximate. Data Sources: ATC, WDNR, WDOT, PSCW, FAA, Xcel Energy, DPC, County LIOs, MVC, NHLT, NRCS, WI DHS, WI DCF. Imagery along routes: ATC, Spring 2012 and 2013. Outer Imagery NAIP 2010.



STATE PRIORITY CORRIDORS

EXISTING ATC OR NSPW TRANSMISSION LINES

Substation

69 kV

69 kV Underground

138 kV

161 kV

345 kV

OTHER EXISTING TRANSMISSION LINES

Substation

69 kV

161 kV

Interstate, US or State Highway

Approximate Gas Pipeline

Railroad

State/County Trail

Approved Hampton-Rochester-La Crosse 345 kV Transmission Project

PROJECT RELATED DATA

Segment N

Segment O

Northern Route (Segments A, D, E, G, H, J, K, M, N, P)

Alternative Segment P-East

Southern Route (Segments B, C, F, G, I, J, L, M, O)

Alternative Segment B-North

Route Segment Node

Route Segment ID

Off Right-of-Way Construction Access

Required

Optional

Briggs Road Substation

Laydown Yard

PLACES OF INTEREST

Campground

Cemetery

Church

City Hall

Clinic/Hospital

Airport

Park

Golf Course

Quarry/Mine

School

Communication Tower

Stream

Open Water

WDNR Wetlands

County Boundary

City/Village/Town Boundary

Tax Parcel

Tribal Land

0

200

400

Feet

APPENDIX A FIGURE 3A
PROJECT SUMMARY
Northern Route - Segment N
**BADGER COULEE 345 KV
TRANSMISSION LINE PROJECT**

OCTOBER 2013

MAP A3-A097

PAGE 097 OF 166

APPENDIX A

FIGURE 3A-PROJECT SUMMARY
NORTHERN ROUTE



STATE PRIORITY CORRIDORS

EXISTING ATC OR NSPW TRANSMISSION LINES

Substation

69 kV

69 kV Underground

138 kV

161 kV

345 kV

Approved Hampton-Rochester-La Crosse 345 kV Transmission Project

OTHER EXISTING TRANSMISSION LINES

Substation

69 kV

161 kV

Interstate, US or State Highway

Approximate Gas Pipeline

Railroad

State/County Trail

PROJECT RELATED DATA

Segment N

Northern Route (Segments A, D, E, G, H, J, K, M, N, P)

Alternative Segment P-East

Segment O

Southern Route (Segments B, C, F, G, I, J, L, M, O)

Alternative Segment B-North

Route Segment Node

Route Segment ID

Off Right-of-Way Construction Access

Required

Optional

Briggs Road Substation

Laydown Yard

PLACES OF INTEREST

Campground

Cemetery

Church

City Hall

Clinic/Hospital

Airport

Park

Golf Course

Quarry/Mine

School

Communication Tower

Stream

Open Water

WDNR Wetlands

County Boundary

City/Village/Town Boundary

Tax Parcel

Tribal Land

0 200 400 Feet

ATC

Xcel Energy

APPENDIX A FIGURE 3A
PROJECT SUMMARY
Northern Route - Segment N

BADGER COULEE 345 KV
TRANSMISSION LINE PROJECT

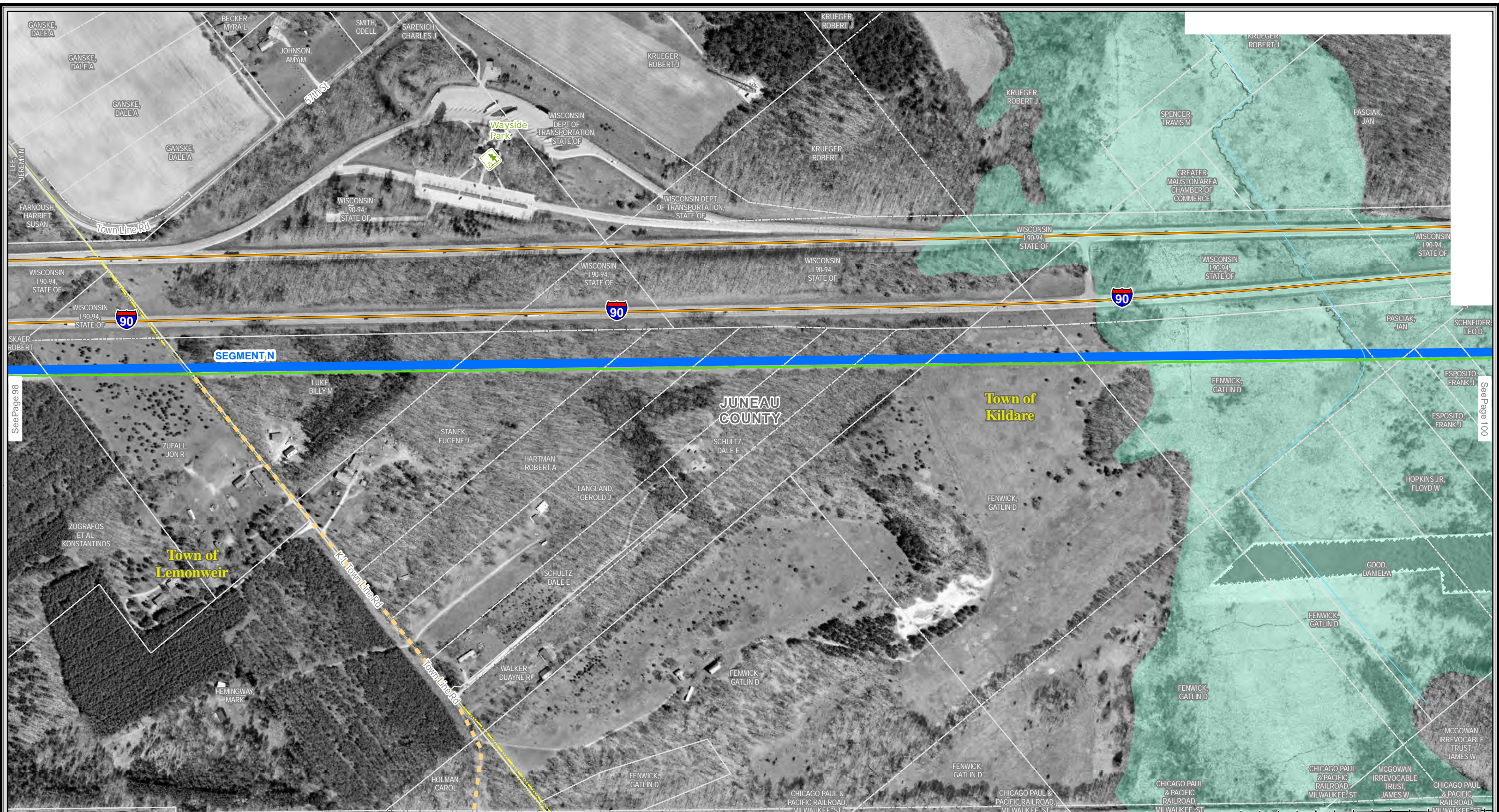
OCTOBER 2013

MAP A3-A098

PAGE 098 OF 166

APPENDIX A FIGURE 3A-PROJECT SUMMARY
NORTHERN ROUTE

The information presented in this map document is advisory and is intended for reference purposes only. Applicants' owned and operated facility locations are approximate. Data Sources: ATC, WDNR, WDOT, PSCW, FAA, Xcel Energy, DPC, County LIOs, MVC, NHLT, NRCS, WI DHS, WI DCF. Imagery along routes: ATC, Spring 2012 and 2013. Outer Imagery NAIP 2010.



STATE PRIORITY CORRIDORS

EXISTING ATC OR NSPW TRANSMISSION LINES

Substation

69 kV

69 kV Underground

138 kV

161 kV

345 kV

Approved Hampton-Rochester-La Crosse 345 kV Transmission Project

OTHER EXISTING TRANSMISSION LINES

Substation

69 kV

161 kV

Interstate, US or State Highway

Approximate Gas Pipeline

Railroad

State/County Trail

PROJECT RELATED DATA

Segment N

Segment O

Northern Route (Segments A, D, E, G, H, J, K, M, N, P)

Alternative Segment P-East

Southern Route (Segments B, C, F, G, I, J, L, M, O)

Alternative Segment B-North

Route Segment Node

Route Segment ID

Off Right-of-Way Construction Access

Required

Optional

Briggs Road Substation

Laydown Yard

PLACES OF INTEREST

Campground

Cemetery

Church

City Hall

Clinic/Hospital

Airport

Park

Golf Course

Quarry/Mine

School

Communication Tower

Stream

Open Water

WDNR Wetlands

County Boundary

City/Village/Town Boundary

Tax Parcel

Tribal Land

0 200 400 Feet

ATC

Xcel Energy

APPENDIX A FIGURE 3A
PROJECT SUMMARY
Northern Route - Segment N

BADGER COULEE 345 KV
TRANSMISSION LINE PROJECT

OCTOBER 2013

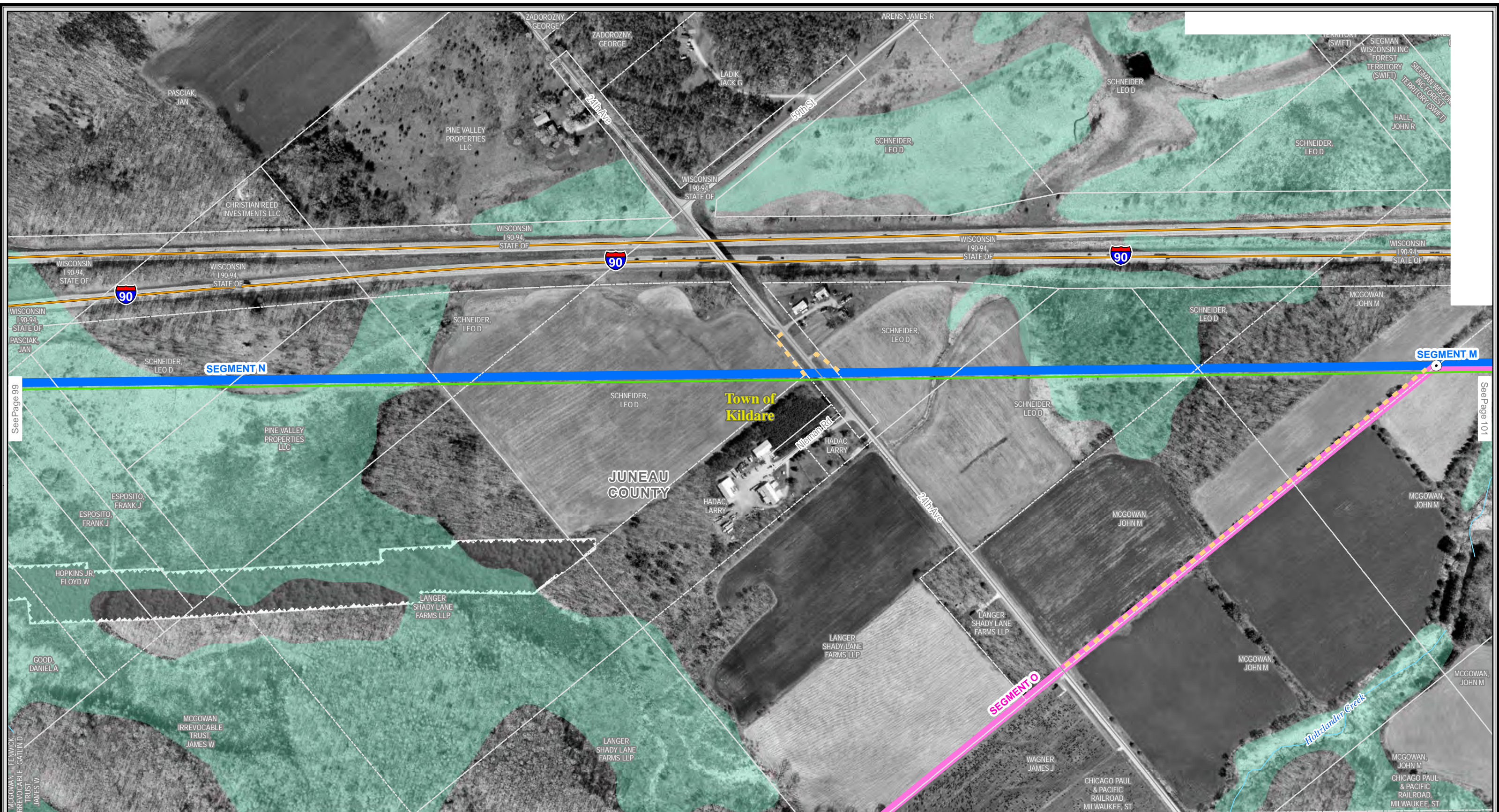
MAP A3-A099

PAGE 099 OF 166

APPENDIX A

FIGURE 3A-PROJECT SUMMARY
NORTHERN ROUTE

The information presented in this map document is advisory and is intended for reference purposes only. Applicants' owned and operated facility locations are approximate. Data Sources: ATC, WDNR, WDOT, PSCW, FAA, Xcel Energy, DPC, County LIOs, MVC, NHLT, NRCS, WI DHS, WI DCF. Imagery along routes: ATC, Spring 2012 and 2013. Outer Imagery NAIP 2010.



STATE PRIORITY CORRIDORS

EXISTING ATC OR NSPW TRANSMISSION LINES

Substation

69 kV

69 kV Underground

138 kV

161 kV

345 kV

OTHER EXISTING TRANSMISSION LINES

Substation

69 kV

161 kV

Interstate, US or State Highway

Approximate Gas Pipeline

Railroad

State/County Trail

Approved Hampton-Rochester-La Crosse 345 kV Transmission Project

PROJECT RELATED DATA

Segment N

Segment O

Northern Route (Segments A, D, E, G, H, J, K, M, N, P)

Alternative Segment P-East

Southern Route (Segments B, C, F, G, I, J, L, M, O)

Alternative Segment B-North

Route Segment Node

Route Segment ID

Off Right-of-Way Construction Access

Required

Optional

Briggs Road Substation

Laydown Yard

PLACES OF INTEREST

Campground

Cemetery

Church

City Hall

Clinic/Hospital

Airport

Park

Golf Course

Quarry/Mine

School

Communication Tower

Stream

Open Water

WDNR Wetlands

County Boundary

City/Village/Town Boundary

Tax Parcel

Tribal Land

0 200 400 Feet

ATC AMERICAN TRANSMISSION COMPANY

Xcel Energy

APPENDIX A FIGURE 3A PROJECT SUMMARY Northern Route - Segment N

BADGER COULEE 345 KV TRANSMISSION LINE PROJECT

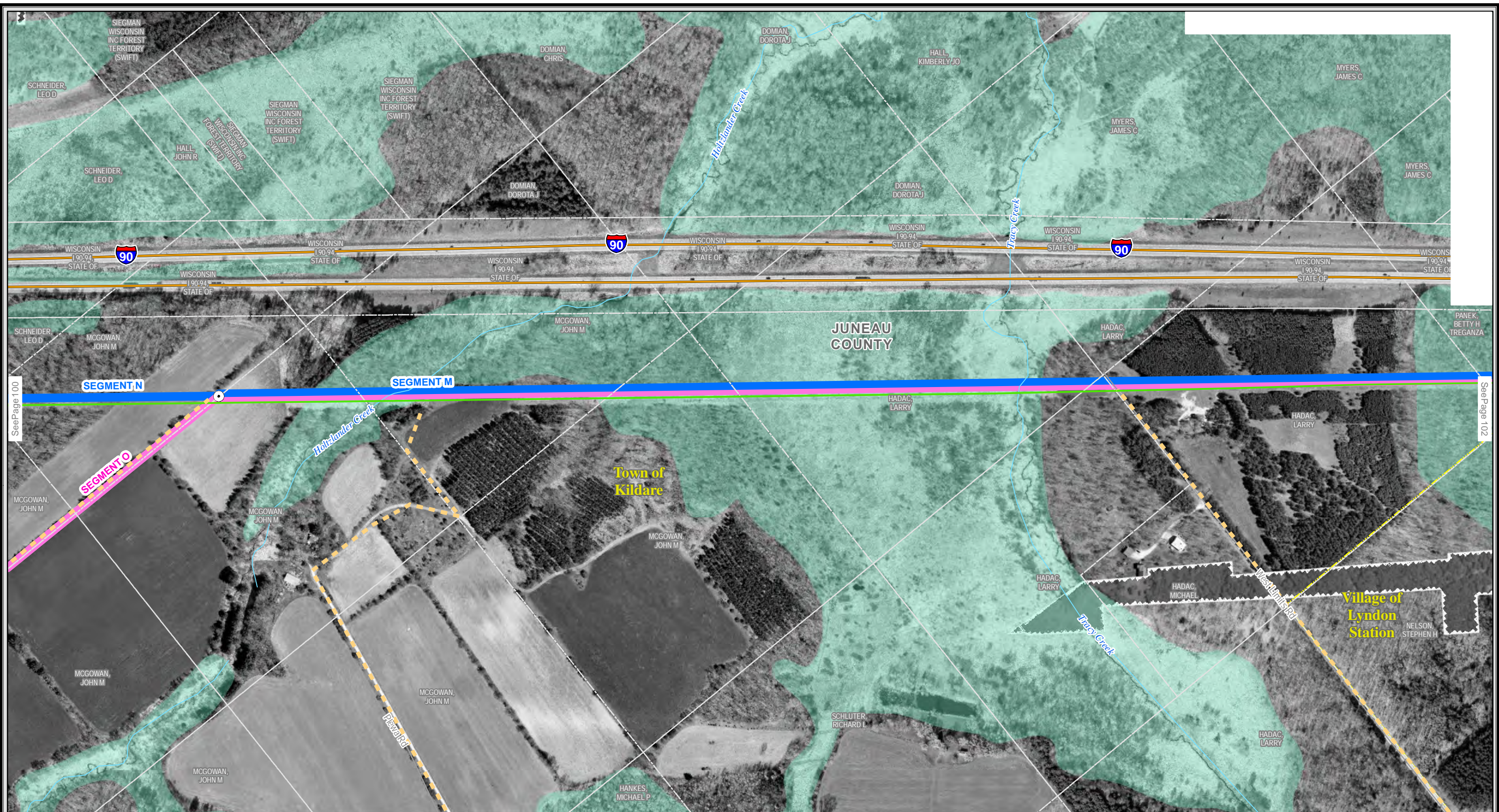
OCTOBER 2013

MAP A3-A100

PAGE 100 OF 166

APPENDIX A FIGURE 3A-PROJECT SUMMARY NORTHERN ROUTE

The information presented in this map document is advisory and is intended for reference purposes only. Applicants' owned and operated facility locations are approximate. Data Sources: ATC, WDNR, WDOT, PSCW, FAA, Xcel Energy, DPC, County LIOs, MVC, NHLT, NRCS, WI DHS, WI DCF. Imagery along routes: ATC, Spring 2012 and 2013. Outer Imagery NAIP 2010.



STATE PRIORITY CORRIDORS

EXISTING ATC OR NSPW TRANSMISSION LINES

Substation

69 kV

69 kV Underground

138 kV

161 kV

345 kV

OTHER EXISTING TRANSMISSION LINES

Substation

69 kV

161 kV

Interstate, US or State Highway

Approximate Gas Pipeline

Railroad

State/County Trail

Approved Hampton-Rochester-La Crosse 345 kV Transmission Project

PROJECT RELATED DATA

Segment N

Segment O

Northern Route (Segments A, D, E, G, H, J, K, M, N, P)

Alternative Segment P-East

Southern Route (Segments B, C, F, G, I, J, L, M, O)

Alternative Segment B-North

Route Segment Node

Route Segment ID

Off Right-of-Way Construction Access

Required

Optional

Briggs Road Substation

Laydown Yard

PLACES OF INTEREST

Campground

Cemetery

Church

City Hall

Clinic/Hospital

Airport

Park

Golf Course

Quarry/Mine

School

Communication Tower

Stream

Open Water

WDNR Wetlands

County Boundary

City/Village/Town Boundary

Tax Parcel

Tribal Land

0

200

400

Feet

AMERICAN TRANSMISSION COMPANY

APPENDIX A FIGURE 3A
PROJECT SUMMARY
Northern Route - Segment M

BADGER COULEE 345 KV
TRANSMISSION LINE PROJECT

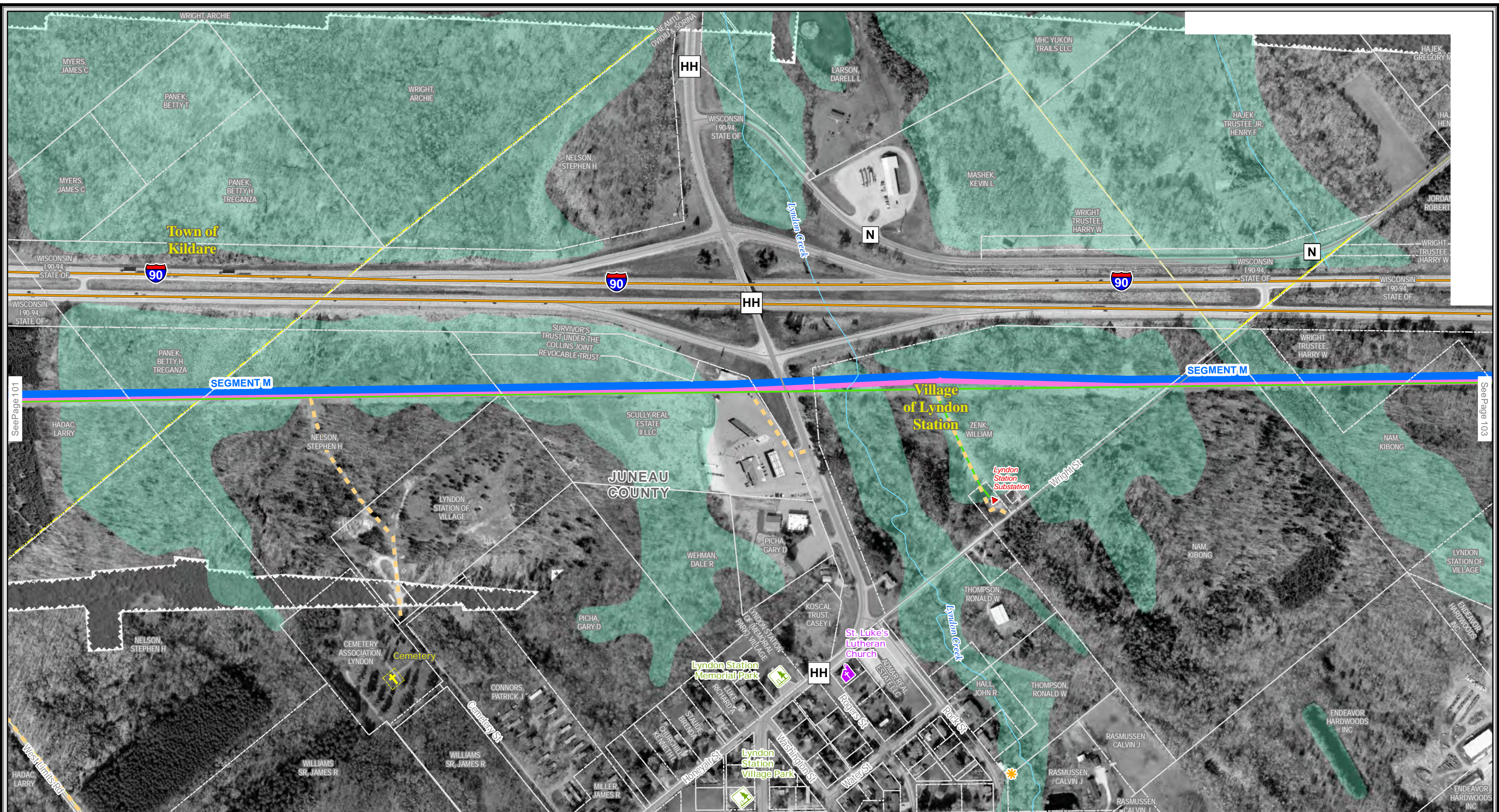
OCTOBER 2013

MAP A3-A101

PAGE 101 OF 166

APPENDIX A

FIGURE 3A-PROJECT SUMMARY
NORTHERN ROUTE



STATE PRIORITY CORRIDORS

EXISTING ATC OR NSPW TRANSMISSION LINES

Substation

69 kV

69 kV Underground

138 kV

161 kV

345 kV

OTHER EXISTING TRANSMISSION LINES

Substation

69 kV

161 kV

Interstate, US or State Highway

Approximate Gas Pipeline

Railroad

State/County Trail

Approved Hampton-Rochester-La Crosse 345 kV Transmission Project

PROJECT RELATED DATA

Segment N

Segment O

Northern Route (Segments A, D, E, G, H, J, K, M, N, P)
Alternative Segment P-East

Southern Route (Segments B, C, F, G, I, J, L, M, O)
Alternative Segment B-North

Route Segment Node

Route Segment ID

Off Right-of-Way Construction Access

Required

Optional

Briggs Road Substation

Laydown Yard

PLACES OF INTEREST

Campground

Cemetery

Church

City Hall

Clinic/Hospital

Airport

Park

Golf Course

Quarry/Mine

School

Communication Tower

Stream

Open Water

WDNR Wetlands

County Boundary

City/Village/Town Boundary

Tax Parcel

Tribal Land

0

200

400

Feet

ATC

Xcel Energy

APPENDIX A FIGURE 3A
PROJECT SUMMARY
Northern Route - Segment M

BADGER COULEE 345 KV
TRANSMISSION LINE PROJECT

OCTOBER 2013

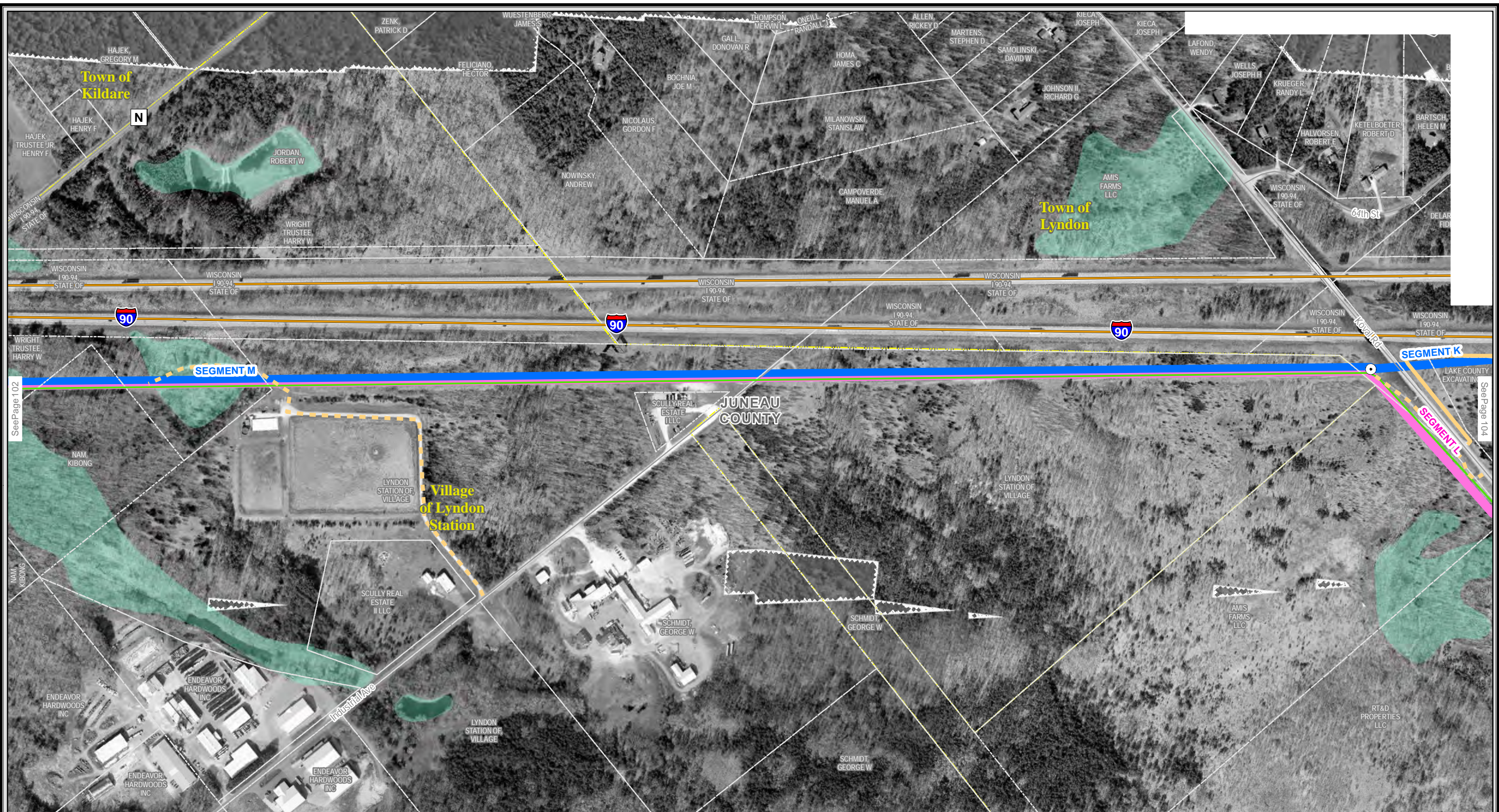
MAP A3-A102

PAGE 102 OF 166

APPENDIX A

FIGURE 3A-PROJECT SUMMARY
NORTHERN ROUTE

The information presented in this map document is advisory and is intended for reference purposes only. Applicants' owned and operated facility locations are approximate. Data Sources: ATC, WDNR, WDOT, PSCW, FAA, Xcel Energy, DPC, County LIOs, MVC, NHLT, NRCS, WI DHS, WI DCF. Imagery along routes: ATC, Spring 2012 and 2013. Outer Imagery NAIP 2010.



STATE PRIORITY CORRIDORS

EXISTING ATC OR NSPW TRANSMISSION LINES

Substation

69 kV

69 kV Underground

138 kV

161 kV

345 kV

OTHER EXISTING TRANSMISSION LINES

Substation

69 kV

161 kV

Interstate, US or State Highway

Approximate Gas Pipeline

Railroad

State/County Trail

Approved Hampton-Rochester-La Crosse 345 kV Transmission Project

PROJECT RELATED DATA

Segment N

Segment O

Northern Route (Segments A, D, E, G, H, J, K, M, N, P)

Alternative Segment P-East

Southern Route (Segments B, C, F, G, I, J, L, M, O)

Alternative Segment B-North

Route Segment Node

Route Segment ID

Off Right-of-Way Construction Access

Required

Optional

Briggs Road Substation

Laydown Yard

PLACES OF INTEREST

Campground

Cemetery

Church

City Hall

Clinic/Hospital

Airport

Park

Golf Course

Quarry/Mine

School

Communication Tower

Stream

Open Water

WDNR Wetlands

County Boundary

City/Village/Town Boundary

Tax Parcel

Tribal Land

0 200 400 Feet

ATC

AMERICAN TRANSMISSION COMPANY

Xcel Energy

APPENDIX A FIGURE 3A
PROJECT SUMMARY
Northern Route - Segment M

BADGER COULEE 345 KV
TRANSMISSION LINE PROJECT

OCTOBER 2013

MAP A3-A103

PAGE 103 OF 166

APPENDIX A FIGURE 3A-PROJECT SUMMARY
NORTHERN ROUTE

The information presented in this map document is advisory and is intended for reference purposes only. Applicants' owned and operated facility locations are approximate. Data Sources: ATC, WDNR, WDOT, PSCW, FAA, Xcel Energy, DPC, County LIOs, MVC, NHLT, NRCS, WI DHS, WI DCF. Imagery along routes: ATC, Spring 2012 and 2013. Outer Imagery NAIP 2010.