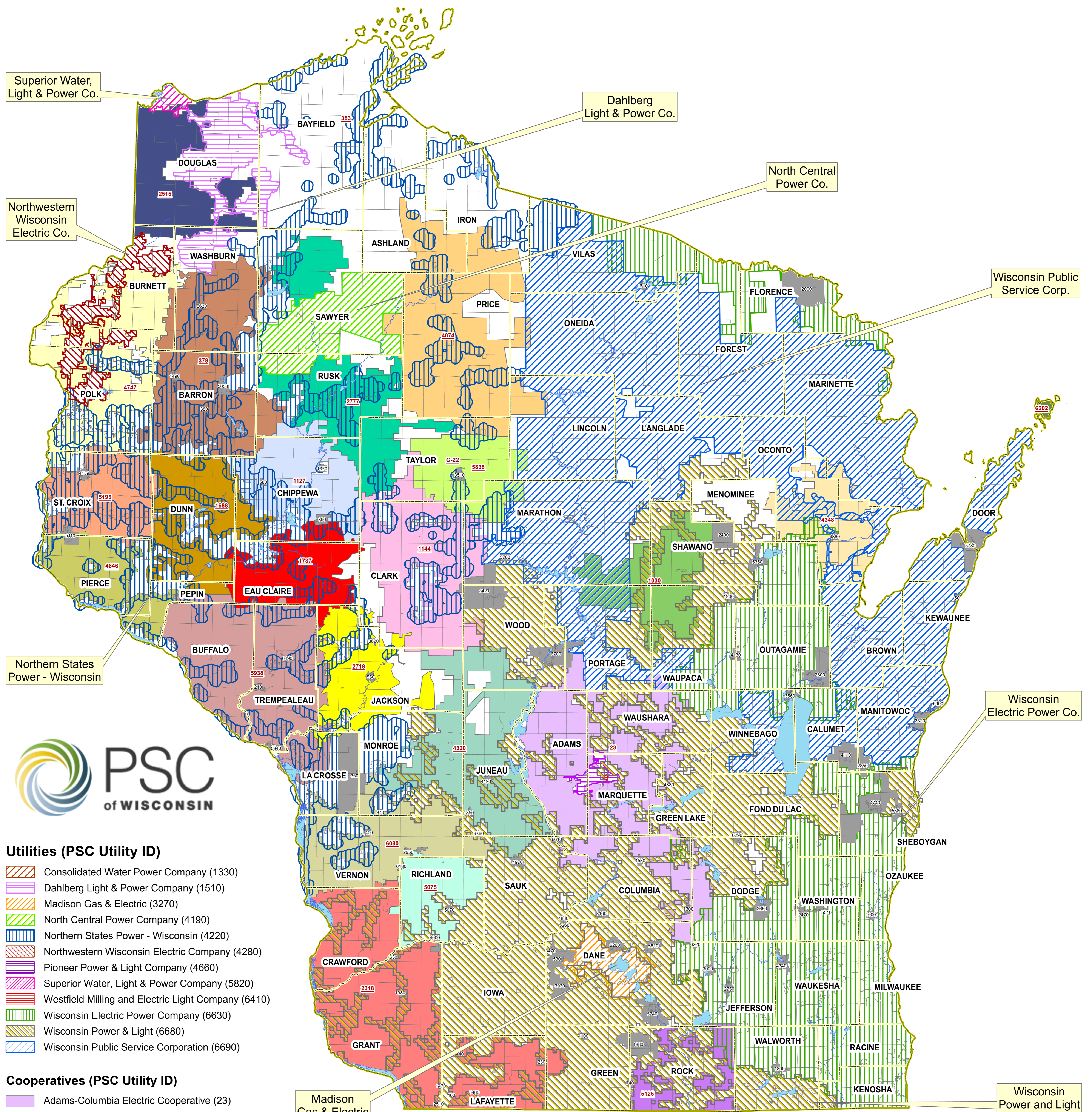


Wisconsin Electric Service Territories



Utilities (PSC Utility ID)

- Consolidated Water Power Company (1330)
- Dahlberg Light & Power Company (1510)
- Madison Gas & Electric (3270)
- North Central Power Company (4190)
- Northern States Power - Wisconsin (4220)
- Northwestern Wisconsin Electric Company (4280)
- Pioneer Power & Light Company (4660)
- Superior Water, Light & Power Company (5820)
- Westfield Milling and Electric Light Company (6410)
- Wisconsin Electric Power Company (6630)
- Wisconsin Power & Light (6680)
- Wisconsin Public Service Corporation (6690)

Cooperatives (PSC Utility ID)

- Adams-Columbia Electric Cooperative (23)
- Barron Electric Cooperative (378)
- Bayfield Electric Cooperative (383)
- Central Wisconsin Electric Cooperative (1030)
- Chippewa Valley Electric Cooperative (1127)
- Clark Electric Cooperative (1144)
- Dunn Energy Cooperative (1688)
- East Central Energy (2515)
- Eau Claire Energy Cooperative (1737)
- Jackson Electric Cooperative (2718)
- Jump River Electric Cooperative (2777)
- Oakdale Electric Cooperative (4320)
- Oconto Electric Cooperative (4348)
- Pierce Pepin Cooperative Services (4646)
- Polk-Burnett Electric Cooperative (4747)
- Price Electric Cooperative (4874)
- Richland Electric Cooperative (5075)
- Riverland Energy Cooperative (5938)
- Rock Energy Cooperative (5125)
- Scenic Rivers Energy Cooperative (2318)
- St. Croix Electric Cooperative (5195)
- Taylor Electric Cooperative (5838)
- Vernon Electric Cooperative (6080)
- Washington Island Electric Cooperative, Inc. (6202)

Municipal Electric Utilities (PSC Utility ID)

- | | | |
|---|---|--|
| <ul style="list-style-type: none"> Algoma Utility Commission (50) Arcadia Electric & Water Utility (210) Argyle Municipal Electric & Water Utility (230) Bangor Municipal Utility (350) Barron Light and Water Utility (380) Belmont Municipal Water & Electric Utility (440) Benton Municipal Electric & Water Utility (460) Black Earth Electric Utility (530) Black River Falls Municipal Electric & Water (550) Bloomer City of Electric Utility (580) Boscobel Municipal Utilities (650) Brodhead Water & Light Commission (740) Cadott Light & Water Municipal Utility (890) Cashton Municipal Electric & Water Utility (970) Cedarburg Light & Water Commission (1000) Clintonville Water & Electric Utility (1200) Columbus Water & Light Department (1300) Cornell Municipal Water & Electric Utility (1370) Cuba City Electric & Water Utility (1470) Cumberland Municipal Utility (1490) Eagle River Light & Water Commission (1710) Elkhorn Light & Water (1800) Elroy Municipal Electric & Water Utility (1850) Evansville City of Water & Light (1880) Fennimore Water & Light Plant (1980) Florence Utility Commission (2000) Gresham Municipal Light & Power Utility (2400) Hartford City of Utilities (2470) | <ul style="list-style-type: none"> Hazel Green Municipal Utility (2510) Hustisford Utilities (2650) Jefferson Water & Electric Department (2750) Juneau Utility Commission (2790) Kaukauna Utilities (2800) Kiel City of Utilities (2850) La Farge Municipal Electric Utility (2950) Lake Mills Light & Water Department (3000) Lodi Municipal Light & Water Utility (3160) Manitowoc Public Utilities (3320) Marshfield Utilities (3420) Mazomanie Electric Utility (3470) Medford Electric Utility (3510) Menasha Electric & Water Utilities (3560) Merrillan Municipal Electric & Water Utility (3620) Mount Horeb Electric Utility (3930) Muscoda Light & Water Utility (4000) New Glarus Light & Water Works (4100) New Holstein Public Utility (4110) New Lisbon Municipal Electric & Water Department (4120) New London Electric & Water Utility (4130) New Richmond City Utilities (4139) Oconomowoc City of Utilities (4340) Oconto Falls Water & Light Commission (4360) Pardeeville Village of Electric Utility (4530) Plymouth Utilities (4740) Prairie du Sac Municipal Electric & Water (4830) | <ul style="list-style-type: none"> Princeton Municipal Water & Electric Utilities (4880) Reedsburg Utility Commission (4970) Rice Lake Municipal Water & Electric Utilities (5050) Richland Center Electric Utility (5070) River Falls Municipal Utility (5110) Sauk City Municipal Water & Light Utility (5260) Shawano Municipal Utilities (5350) Sheboygan Falls Utilities (5380) Shullsburg Electric Utility (5460) Slinger Utilities (5510) Spooner Municipal Utilities (5630) Stoughton Electric Utility (5740) Stratford Municipal Water & Electric Utility (5760) Sturgeon Bay Utilities (5780) Sun Prairie Utilities (5810) Trempealeau Municipal Electric & Water Utility (5940) Two Rivers Water & Light Utility (5990) Viola Municipal Water & Electric Utility (6130) Waterloo Water & Light Commission (6220) Waukegan Water & Light Commission (6260) Waupun Public Utilities (6290) Westby City of Municipal Electric & Water Utility (6400) Whitehall Municipal Electric Utility (6490) Wisconsin Dells Municipal Electric Utility (6610) Wisconsin Rapids Water Works & Lighting Commission (6700) Wonewoc Electric & Water Utility (6760) |
|---|---|--|

Service territory boundaries are approximate and based on information supplied by the utilities and companies. For utilities/companies without defined service territories, a rough boundary was drawn around their facilities and the properties they serve. Portions of the map in white represent areas where no electric service or service territory may have been extended. This map should be viewed as approximate and contains no guarantee of accuracy.